

Reliance[®] Water Heaters

Your neighborhood water heater source.

Product Catalog





Choosing the Right Water Heater

Reliance® offers over 100 gas and electric choices, because choosing a water heater is definitely not a “one size fits all” process. Your top priority is to choose a model that makes sure you’ll always have enough hot water, by matching up with the right First Hour Rating (see chart below). But first, here are a few basic questions to start with to make sure you get the right type of water heater, and a unit that will fit in the space occupied by the current unit.

- Is the water heater natural gas, propane gas, or electric?
- Is the water heater for a mobile home? If so, you should select a Reliance Mobile Home model (pages 7 and 16).
- What is the height available for installation, measuring from the floor to the closest permanent obstruction above the water heater?
- What is the minimum width for the installation location?

Next, determine the First Hour Rating target using the charts below.

ELECTRIC

Family Size	Recommended Tank Capacity (Gallons)	MINIMUM FIRST HOUR RATING (Based on Number of Bathrooms)		
		3 to 3.5	2 to 2.5	1 to 1.5
5+	*See below	80 Gallon	80 Gallon	
4-5	50	67 Gallon	67 Gallon	
3-4	50	67 Gallon	67 Gallon	54 Gallon
2-3	40		54 Gallon	54 Gallon
1-2	30			42 Gallon

GAS

Family Size	Recommended Tank Capacity (Gallons)	MINIMUM FIRST HOUR RATING (Based on Number of Bathrooms)		
		3 to 3.5	2 to 2.5	1 to 1.5
5+	**See below	80 Gallon	80 Gallon	
4-5	40 or 50	67 Gallon	67 Gallon	
3-4	40	67 Gallon	67 Gallon	54 Gallon
2-3	40		54 Gallon	54 Gallon
1-2	30			42 Gallon

These are minimum requirements. To handle high usage factors, you should increase the First Hour Rating target as follows:

- Add 10 gallons for an oversized bathtub or whirlpool
- Add 10 gallons for every teenager living in the home.

*Requires multiple units or hybrid electric heat pump type design. **Requires multiple units or high-efficiency condensing water heater type design. Dimensions and specifications subject to change without notice in accordance with our policy of continuous product improvement.



The Electric Heat Pump Water Heater uses an innovative design that extracts heat in even the most extreme climates.

- 50-, 66-, and 80-gallon models deliver First Hour Ratings up to 95 gallons
- ENERGY STAR® qualified for many state and local utility rebates
- Annual operating cost as low as \$163, yielding up to \$437 annual saving cost compared to a conventional electric model*
- Super quiet operation – 51 dBA versus competitive models
- Dry Fire Protection - prevents heating element failure if energized without water in the tank
- Easy-to-use Electronic User Interface featuring LCD display
- Four Operating Modes:
 - Efficiency (heat pump only)
 - Hybrid (heat pump plus electric)
 - Electric (conventional electric operation)
 - Vacation
- Rated for both 208 VAC and 240 VAC single phase power supply

*10 80 DHPHT in Hybrid Mode

<http://waterheatertimer.org/Which-is-best-hybrid-heat-pump-water-heater.html>



Hybrid Electric Heat Pump

10- or 6-Year Limited Warranty Tank/Parts, 1-Year Limited Warranty Labor†

Type	Model Number	Tank Size Gallons	First Hour Rating	Electric Input Watts/Hour	Recovery 90° Rise - Gallons/Hour	Energy Factor	Height	Diameter	Est. Annual Cost of Operation
Tall	10 50 DHPHT	50	70	4500	21	3.24	63"	22"	\$163
Tall	10 66 DHPHT	66	80	4500	21	3.17	61"	26 1/2"	\$166
Tall	10 80 DHPHT	80	95	4500	21	3.06	69"	26 1/2"	\$176
Tall	6 50 DHPST	50	68	4500	21	2.75	63"	22"	\$192
Tall	6 66 DHPST	66	81	4500	21	2.74	61"	26 1/2"	\$192
Tall	6 80 DHPST	80	91	4500	21	2.72	69"	26 1/2"	\$194

†For complete information consult written warranty.

Energy Factor and First Hour ratings shown for Hybrid Electric Heat Pump units are based on operation in the Hybrid mode. Recovery Ratings shown for Hybrid Electric Heat Pump units are based on back up heating element performance. 10-Year Warranty Hybrid Electric Heat Pump units are rated for both 208 VAC and 240 VAC single phase power supply. 6-Year Warranty Hybrid Electric Heat Pump units are rated for 240 VAC single phase power supply.

Dimensions and specifications subject to change without notice in accordance with our policy of continuous product improvement.



Contents

- Electric Heat Pump.....3
- Electric 12-Year4
- Electric 9-Year.....5
- Electric 6-Year.....6
- Electric Specialty7
- Gas Tankless.....8
- Gas High Efficiency 10
- Gas Energy Efficient 11
- Gas Power Vent..... 12
- Gas Direct Vent 12
- Gas 12-Year 13
- Gas 9-Year..... 14
- Gas 6-Year..... 15
- Gas Mobile Home 16
- Gas Ultra Low NOx..... 17
- Pump Tanks 18
- Gas Commercial.....20
- Expansion Tanks22
- Parts/Accessories23

**12
YEAR**
⚡

The 12-Year Self-Cleaning Electric offers the best features available in a premium electric water heater.



- Available in 40- and 50-gallons, First Hour Ratings up to 79 gallons
- Touch Screen Electronic User Interface, easily set temperature, operating modes and safety lock feature
- Electronic Thermostat - more precise, superior to conventional electromechanical thermostat by having no mechanical parts to wear out
- Self-cleaning PEX dip tube maintains efficiency, reduces maintenance
- Heavy-duty dual anode rods, extra protection against corrosion
- Dry Fire Protection - prevents heating element failure if energized without water in the tank
- Dual Premium 5500 Watt Incoloy Heating Elements
- Factory-Installed Temperature & Pressure (T&P) Relief Valve

<http://waterheatertimer.org/Whirlpool-Energy-Smart-electric.html>

12-Year Limited Warranty Tank/Parts, 1-Year Limited Warranty Labor[†], Electronic Thermostat, Touch-Screen Display

Product Type	Model Number	Tank Size Gallons	First Hour Rating	Electric Input Watts/Hour	Recovery 90° Rise - Gallons/Hour	Energy Factor	Height	Diameter	Est. Annual Cost of Operation
Medium	12 40 EARS	40	56	5500	25	.95	50"	22"	\$555
Medium	12 50 EARS	50	58	5500	25	.95	49 3/4"	24"	\$555
Tall	12 40 EART	40	61	5500	25	.95	60 1/4"	20"	\$555
Tall	12 50 EART*	50	79	5500	25	.95	60 1/2"	22"	\$555

[†]For complete information consult written warranty.
 * Single heavy-duty Magnesium anode rod.
 Dimensions and specifications subject to change without notice in accordance with our policy of continuous product improvement.



**9
YEAR**
⚡

The 9-Year Self-Cleaning Electric offers many features not found in other mid-level electric water heaters.



- Available in 40- and 50-gallons, First Hour Ratings up to 69 gallons
- Electronic Thermostat — superior to conventional electromechanical thermostat by having no mechanical parts to wear out
- Self-cleaning PEX dip tube maintains efficiency, reduces maintenance
- Heavy-duty anode rod protects against corrosion
- Dry Fire Protection - prevents heating element failure if energized without water in the tank
- Dual Premium 4500 Watt Incoloy Heating Elements
- Factory-Installed Temperature & Pressure (T&P) Relief Valve

9-Year Limited Warranty Tank/Parts, 1-Year Limited Warranty Labor[†], Electronic Thermostat

Product Type	Model Number	Tank Size Gallons	First Hour Rating	Electric Input Watts/Hour	Recovery 90° Rise - Gallons/Hour	Energy Factor	Height	Diameter	Est. Annual Cost of Operation
Medium	9 40 EKRS	40	53	4500	21	.95	50"	22"	\$555
Tall	9 40 EKRT	40	54	4500	21	.95	60 1/4"	20"	\$555
Medium	9 50 EKRS	50	53	4500	21	.95	49 3/4"	24"	\$555
Tall	9 50 EKRT	50	69	4500	21	.95	60 1/2"	22"	\$555

[†]For complete information consult written warranty.
 Dimensions and specifications subject to change without notice in accordance with our policy of continuous product improvement.



6
YEAR

The 6-Year Electric family contains the broadest selection of models, one for any application.

- Available in 20- to 50-gallons, First Hour Ratings up to 71 gallons
- Tall, Medium, Lowboy, and Table Top choices to meet a wide variety of installation space requirements
- Automatic Thermostat
- Glass-lined tank with anode rod protects against corrosion
- 4500 Watt standard watt density heating elements
- Factory-Installed Temperature & Pressure (T&P) Relief Valve



6-Year Limited Warranty Tank/Parts, 1-Year Limited Warranty Labor†, Mechanical Thermostat

Product Type	Model Number	Tank Size Gallons	First Hour Rating	Electric Input Watts/Hour	Recovery 90° Rise - Gallons/Hour	Energy Factor	Height	Diameter	Est. Annual Cost of Operation
LB	6 20 EOLS	19 /12	N/A	4500	21	N/A	30"	20"	N/A
LB	6 30 EOLS	28	43	4500	21	.95	31 1/4"	24"	\$555
Med.	6 30 EORS	30	49	4500	21	.95	39 3/4"	22"	\$555
Tall	6 30 EORT	30	47	4500	21	.95	46 1/2"	19"	\$555
LB	6 40 EOMS	38	44	4500	21	.95	33 1/2"	26"	\$555
TT	6 38 EOTT	38	45	4500	21	.88	36"	24 x 25"	\$599
LB	6 40 EOLS	38	44	4500	21	.95	33 1/2"	26"	\$555
Med.	6 40 EORS	40	55	4500	21	.95	50"	20 1/2"	\$555
Tall	6 40 EORT	40	51	4500	21	.95	60 1/4"	20"	\$555
Med.	6 50 EORS	50	62	4500	21	.95	49 3/4"	23"	\$555
Tall	6 50 EORT	50	71	4500	21	.95	60 1/2"	22"	\$555
LB	6 30 EOLBS [‡]	28	40	4500	21	.95	30"	22"	\$555
Med.	6 30 EORBS [‡]	30	48	4500	21	.95	39 3/4"	20"	\$555
Tall	6 50 EORBT [‡]	50	70	4500	21	.95	60 1/4"	21"	\$555
LB	6 40 EOLBS ^{‡♦}	38	46	4500	21	.95	31 3/4"	24"	\$555
LB	6 40 EOMBS ^{‡■}	38	47	4500	21	.95	31 3/4"	24"	\$555
LB	6 50 EOLBS ^{‡♦}	48	57	4500	21	.95	34"	26 1/2"	\$555

† For complete information consult written warranty.

LB = Lowboy TT = Table Top

[‡] Shipped with Factory Insulation Blanket ♦ Top water connections ■ Side water connections

Dimensions and specifications subject to change without notice in accordance with our policy of continuous product improvement.

SPECIALTY



The Specialty Electric group contains Mobile Home, Compact, and Point-of-Use models.

MOBILE HOME

- All models meet HUD requirements for manufactured housing/mobile home installation
- Side-mounted cold water inlet and hot water outlet for easy installation
- 6-year tank and parts limited warranty
- Glass-lined tank with anode rod protects against corrosion
- Factory-Installed Temperature & Pressure (T&P) Relief Valve



COMPACT

- Ideal for under-counter or crawl space installation
- Inlet and outlet connections on side for easier installation in tight spaces; optional top connection points
- All models 120 volt unless specified otherwise; 1 heating element – 2 elements available on 30-gallon models
- 6-year tank and parts limited warranty
- Glass-lined tank with anode rod protects against corrosion
- Factory-Installed Temperature & Pressure (T&P) Relief Valve



POINT-OF-USE

- For low-demand point-of-use applications, such as a handwashing sink
- 6-year tank; 1-year parts warranty
- Stainless steel heating element
- 120 volt; standard plugged cord



MOBILE HOME

COMPACT

POINT-OF-USE

Product Type	Model Number	Tank Size Gallons	First Hour Rating	Electric Input Watts/Hour	Recovery 90° Rise - Gallons/Hour	Energy Factor	Height	Diameter	Est. Annual Cost of Operation
MH	6 30 EMHBS [‡]	30	44	3800	17	.95	39"	20"	\$555
MH	6 40 EMHSD	40	51	3800	17	.95	50"	22"	\$555
C	6 6 SOMS K ^Δ	6	N/A	1650	8	N/A	15 1/4"	14 1/4"	N/A
C	6 10 SOMS K ^Δ	10	N/A	1650	8	N/A	18 1/4"	16"	N/A
C	6 20 SOMS K ^Δ	19	N/A	1650	8	N/A	25"	18"	N/A
C	6 30 EOMSS K ^{Δ♦}	28	39	1650	8	.95	31 1/4"	24"	\$555
C	6 30 EOMBS K ^{Δ♦}	28	39	1650	8	.95	30"	22"	\$555
C	6 30 EOMBS E [‡]	28	39	4500	21	.95	30"	22"	\$555
POU	6 2 SSUS K ^Δ	2.5	N/A	1500	7	N/A	11"	13 3/4 x 13 3/4"	N/A

* Compact models - change "K" to "E" for 240V/2000W element. ♦ Shipped with Factory Insulation Blanket

** Models 6 30 EOMSS K and 6 30 EOMBS K - change "K" to "E" for 240V/4500W element. Δ Configured for 120V AC power.

C = Compact MH = Mobile Home POU = Point of Use

For complete warranty information consult written warranty.

Dimensions and specifications subject to change without notice in accordance with our policy of continuous product improvement.

TANKLESS



Offering a full line of condensing and non-condensing Tankless Gas Water Heaters that provide endless hot water*

- Continuous hot water flow rates up to 10 GPM
- All models include internal freeze protection and multiple safety features
- 15-year warranty on heat exchanger, 5-year warranty on all parts
- Condensing models are ENERGY STAR® qualified
- Indoor models include a power cord and remote control
- Outdoor models include a remote control

*Reliance® Tankless Water Heaters provide endless hot water when sized appropriately for the home's needs.

15-Year Limited Warranty Heat Exchanger, 5-Year Limited Warranty Parts

Model Number	Type	BTU Input Natural/Propane		Energy Factor (E.F.)		Annual Operating Cost		Hot Water Output (GPM)		
		Minimum	Maximum	Natural	Propane	Natural	Propane	Maximum	45°F Rise	70°F Rise
Low NOx Non-Condensing Residential/Light Duty Commercial Gas (suitable for 0-6,000 ft. above Sea Level)										
TS-110-GI	In	19,500	140,000	0.82	0.82	\$199	\$482	6.6	5.1	3.3
TS-310-GI	In	11,000	190,000	0.82	0.82	\$199	\$482	8.0	6.9	4.4
TS-510-GI*	In	11,000	199,000	0.82	0.82	\$199	\$482	10.0	7.2	4.7
TS-110-GE	Out	19,500	140,000	0.82	0.82	\$199	\$482	6.6	5.1	3.3
TS-310-GE	Out	11,000	190,000	0.82	0.82	\$199	\$482	8.0	6.9	4.4
TS-510-GE*	Out	11,000	199,000	0.82	0.82	\$199	\$482	10.0	7.2	4.7
Ultra Low NOx Non-Condensing Residential/Light Duty Commercial Gas (suitable for High Altitude Areas: 0-7,500 ft. above Sea Level)										
TS-110-UI*	In	15,000	140,000	0.82	N/A	\$199	N/A	6.6	5.1	3.3
TS-310-UI*	In	15,000	190,000	0.82	N/A	\$199	N/A	8.0	6.9	4.4
TS-510-UI*	In	15,000	199,000	0.82	N/A	\$199	N/A	10.0	7.2	4.7
TS-110-UE*	Out	15,000	140,000	0.82	N/A	\$199	N/A	6.6	5.1	3.3
TS-310-UE*	Out	15,000	190,000	0.82	N/A	\$199	N/A	8.0	6.9	4.4
TS-510-UE*	Out	15,000	199,000	0.82	N/A	\$199	N/A	10.0	7.2	4.7
Ultra Low NOx Condensing Residential/Light Duty Commercial Gas (suitable for High Altitude Areas: 0-10,100 ft. above Sea Level)										
TS-140-GIH	In	15,000/15,000	120,000	0.93	0.93	\$176	\$421	6.6	5.0	3.2
TS-240-GIH	In	15,000/13,000	160,000	0.95	0.95	\$172	\$416	6.6	6.6	4.3
TS-340-GIH	In	15,000/13,000	180,000	0.95	0.95	\$172	\$416	8.0	7.6	4.9
TS-540-GIH	In	15,000/13,000	199,000	0.95	0.95	\$172	\$416	10.0	8.4	5.4
TS-140-GEH	Out	15,000/15,000	120,000	0.93	0.93	\$176	\$421	6.6	5.0	3.2
TS-240-GEH	Out	15,000/13,000	160,000	0.95	0.95	\$172	\$416	6.6	6.6	4.3
TS-340-GEH	Out	15,000/13,000	180,000	0.95	0.95	\$172	\$416	8.0	7.6	4.9
TS-540-GEH	Out	15,000/13,000	199,000	0.95	0.95	\$172	\$416	10.0	8.4	5.4

For propane gas water heaters, change "G" to "L" in the model number. For example: TS-110-GI would be TS-110-LI.

* Not available in propane gas.

† Can be installed in light-duty commercial applications. Includes remote control and can connect up to 4 units.

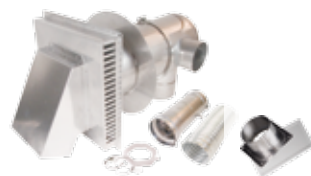
In = Indoor Out = Outdoor

Dimensions and specifications subject to change without notice in accordance with our policy of continuous product improvement.

Concentric Direct Vent Kits for Indoor Tankless Units

Part #	Description	110	310	510
9008001005	Direct Vent Conversion Kit with Condensate Drain, Backflow Preventer, Air Intake Flex Hose, Condensate Drain Tube, and Concentric Termination (5"-10")	X	X	X
9008000005	Direct Vent Conversion Kit with Condensate Drain, Backflow Preventer, Air Intake Flex Hose, Condensate Drain Tube, and Concentric Termination (12"-18")	X	X	X

The Concentric Direct Vent Kits listed above are for use only on non-condensing tankless units and are for indoor use only. Dimensions and specifications subject to change without notice in accordance with our policy of continuous product improvement.



TANKLESS
CONCENTRIC



Introducing the next generation of Tankless Gas Water Heaters... Concentric Vent.

- Continuous hot water flow rates up to 10 GPM
- Quick natural gas to propane field convertibility (kit included with heater)
- Ultra-Low NOx emissions
- 15-year warranty on heat exchanger, 5-year warranty on all parts
- Contractor-preferred concentric venting
- Installs with commercially available venting
- Long venting runs - up to 43'
- Certified for high altitude up to 10,100'
- 510C Models expandable capacity for commercial applications
 - Easy-Link up to 4 heaters with supplied cable
 - Multi-Link up to twenty heaters with optional multi-unit controller

15-Year Limited Warranty Heat Exchanger, 5-Year Limited Warranty Parts

Model Number	Type	BTU Input Natural/Propane		Energy Factor (E.F.)		Annual Operating Cost		Hot Water Output (GPM)		
		Minimum	Maximum	Natural	Propane	Natural	Propane	Maximum	45°F Rise	70°F Rise
Non-Condensing Concentric Vent Field Convertible Residential/Light Duty Commercial (suitable for 0-10,100 ft above Sea Level)										
TS-110C-GI	In	15,000	140,000	0.82	0.82	\$199	\$482	6.6	5.1	3.3
TS-310C-GI	In	15,000	190,000	0.82	0.82	\$199	\$482	8.0	7.6	4.9
TS-510C-GI	In	15,000	199,000	0.82	0.82	\$199	\$482	10.0	8.4	5.4

For propane gas water heaters, change "G" to "L" in the model number.

For example: TS-110C-GI would be TS-110C-LI.

In = Indoor. Dimensions and specifications subject to change without notice in accordance with our policy of continuous product improvement.

Concentric Vent Components and Accessories

Part #	Description	Part #	Description
100266115	11.5" Standard Sidewall Kit	100266137	Tile/Shingle roof flashing 8/12 to 16/12 pitch
100266117	21" Standard Sidewall Kit	100266138	Tile/Shingle roof flashing 6/12 to 12/12 pitch
100266118	38" Roof termination	100266139	Condensate Trap
100266119	45° Elbow	100266140	Condensate Collector
100266132	90° Elbow	100266141	Pipe Hangers
100266133	10" Straight Pipe	9007604005	Isolation Valve Kit
100266134	19.5" Straight Pipe	9008871005	Product Preserver - Anti-scale Filter Kit
100266135	39" Straight Pipe	9009069005	Remote Controller
100266187	Flat roof flashing	9008300005	Multi-unit Controller (510C only)
100266136	Tile/Shingle roof flashing 1/12 to 6/12 pitch		



HIGH EFFICIENCY



The High Efficiency Atmospheric Gas Water Heater can save up to 25% off the annual water heating cost.

- Patented air intake system pressurizes the combustion chamber creating a “turbo charged” effect, resulting in the most efficient atmospheric gas product on the market, with a .70 energy factor
- Easy-to-read, eye-level LCD control for simple temperature adjustment and service diagnostics
- Easy installation, uses the same gas, water, and venting connections as standard atmospheric models
- ENERGY STAR® qualified
- 12-year tank and parts limited warranty; 1-year labor warranty
- Electronic ignition means no standing pilot to worry about
- Powered anode rod protects against tank corrosion
- Self-Cleaning PEX dip tube reduces lime and sediment buildup
- Durable tamper-resistant brass drain valve



<http://waterheatertimer.org/Review-AO-Smith-Effex-water-heater.html>

High Efficiency, 12-Year Limited Warranty Tank/Parts, 1-Year Limited Warranty Labor† (Not for Mobile Home use)

Product Type	Model Number	Tank Size Gallons	First Hour Rating	Natural Gas‡ BTU Input	Recovery 90° Rise - Gallons/Hour	Energy Factor	Height Δ	Diameter	Est. Annual Cost of Operation
Tall	12 40 GPCT*	40	70	40,000	43	.70	61 1/2"	20"	\$233
Tall	12 50 GPCT*	50	81	40,000	43	.70	60 1/2"	22"	\$233

*Not available in propane gas.

†For complete information consult written warranty.

‡Some propane gas models have slightly lower inputs than natural gas models, which may reduce First Hour Rating and recovery by up to 3 gallons on propane models.

Δ Height dimension is to the top of the draft diverter.

Dimensions and specifications subject to change without notice in accordance with our policy of continuous product improvement.

HIGH EFFICIENCY



Energy Efficient Gas Water Heaters featuring an energy factor of .67.

- Unique design captures escaping hot combustion gases to heat stored water longer
- Available in 40- and 50-gallon models
- ENERGY STAR® qualified
- 6-year tank and parts limited warranty
- Advanced electronic gas control valve assures tighter temperature control



<http://waterheatertimer.org/Review-AO-Smith-Flue-damper-gas-Water-Heater.html>

High Efficiency, 6-Year Limited Warranty Tank/Parts, 1-Year Limited Warranty Labor† (Not for Mobile Home use)

Product Type	Model Number	Tank Size Gallons	First Hour Rating	Natural Gas‡ BTU Input	Recovery 90° Rise - Gallons/Hour	Energy Factor	Height Δ	Diameter	Est. Annual Cost of Operation
Tall	6 40 GBFT	40	67	40,000	41	.67	64 1/4"	20"	\$244
Short	6 40 GBFS	40	67	40,000	41	.67	54"	22"	\$244
Tall	6 50 GBFT	50	81	40,000	41	.67	63 1/2"	22"	\$244

For propane gas water heaters, change “G” to “L” in the model number. For example: 6 40 GBFT would be 6 40 LBFT.

†For complete information consult written warranty.

‡Some propane gas models have slightly lower inputs than natural gas models, which may reduce First Hour Rating and recovery by up to 3 gallons on propane models.

Δ Height dimension is to the top of the draft diverter.

Dimensions and specifications subject to change without notice in accordance with our policy of continuous product improvement.

HIGH EFFICIENCY



Choose the venting option that's right for the application.

Power-Vent and Power Direct-Vent, 6-Year Limited Warranty Tank/Parts, 1-Year Limited Warranty Labor† (Not for Mobile Home use)

- Sidewall venting up to 180 feet: 6 40 YRVIT and 6 50 YRVIT models
- Vents using inexpensive schedule 40 PVC, CPVC, or ABS pipe
- More powerful modular blower with 110/120 volt electrical system
- 6-year tank and parts limited warranty
- Advanced electronic controls with electronic ignition - no standing pilot saves energy
- Glass-lined tank with anode rod protects against corrosion
- Factory-Installed Temperature & Pressure (T&P) Relief Valve

Product Type	Model Number	Tank Size Gallons	First Hour Rating	Natural Gas‡ BTU Input	Recovery 90° Rise - Gallons/ Hour	Energy Factor	Height Δ	Diameter	Est. Annual Cost of Operation
PV	6 40 YBVIS	40	73	40,000	45	.70	59"	22"	\$233
PV	6 40 YRVIT	40	90	50,000	56	.70	70 1/4"	20"	\$233
PV	6 50 YBVIS	50	90	40,000	45	.70	60 1/8"	24"	\$233
PV	6 50 YRVIT	50	96	50,000	56	.70	69 3/4"	22"	\$233
PV	6 75 YRVHTL**	75	N/A	76,000	84	N/A	70 5/8"	26"	N/A
Very High Efficiency 90% Thermal Efficiency									
PV	6 50 YTVIT*	50	N/A	76,000	92	N/A	71 1/8"	22"	N/A
Very High Efficiency 96% Thermal Efficiency									
PDV	6 50 YTPDT	50	N/A	100,000	129	N/A	66 3/4"	22"	N/A
PDV	6 75 YTPDT	75	N/A	100,000	129	N/A	65 1/4"	27 3/4"	N/A

For propane gas water heaters, change "Y" to "H" in the model number. For example: 6 40 YRVIT would be 6 40 HRVIT.
 †For complete information consult written warranty. *Not available in propane gas. **Not ENERGY STAR® qualified.
 ‡Some propane gas models have slightly lower inputs than natural gas models, which may reduce First Hour Rating and recovery by up to 3 gallons on propane models.
 Δ Height dimension is to the top of the blower outlet.
 Dimensions and specifications subject to change without notice in accordance with our policy of continuous product improvement.

Direct-Vent, 6-Year Limited Warranty Tank/Parts, 1-Year Limited Warranty Labor† (Not for Mobile Home use)

- Concentric vent system for sidewall venting and intake combustion air from outside the home
- Can be installed up to 4 feet from outside wall with no electric power
- Direct-vent design draws combustion air from outside the home
- 6-year tank and parts limited warranty
- Piezo igniter allows for easy "one-hand" pilot ignition
- Glass-lined tank with anode rod protects against corrosion
- Eco-Friendly Green Choice® gas burner — reduces NOx emissions by 33%
- Factory-Installed Temperature & Pressure (T&P) Relief Valve

Product Type	Model Number	Tank Size Gallons	First Hour Rating	Natural Gas‡ BTU Input	Recovery 90° Rise - Gallons/ Hour	Energy Factor	Height Δ	Diameter	Est. Annual Cost of Operation
DV	6 40 YBDS	40	72	38,000	41	.63	67" min.	22"	\$259
DV	6 50 YBDS	50	91	40,000	43	.62	76" min.	22"	\$263

For propane gas water heaters, change "Y" to "H" in the model number. For example: 6 40 YBDS would be 6 40 HBDS.
 †For complete information consult written warranty.
 ‡Some propane gas models have slightly lower inputs than natural gas models, which may reduce First Hour Rating and recovery by up to 3 gallons on propane models.
 Δ Height dimension is to the top of concentric vent pipe.
 Dimensions and specifications subject to change without notice in accordance with our policy of continuous product improvement.



12 YEAR



The 12-Year Self-Cleaning Gas Water Heater offers the best features available in a premium gas water heater.

- Available in 40- and 50-gallons, First Hour Ratings up to 92 gallons
- Up to 50,000 BTU input
- Self-cleaning PEX dip tube helps maintain efficiency and reduce maintenance
- 12-year tank and parts limited warranty; 1-year labor warranty
- Environmentally-Friendly, CFC-Free foam insulation reduces standby heat loss
- Advanced electronic gas control valve assures tighter temperature control
- Patented Blue Steel™ glass lining enriched with higher levels of zircon for ultimate protection against corrosion
- Heavy-duty dual anode rods provide extra protection against tank corrosion
- Eco-Friendly Green Choice® gas burner — reduces NOx emissions by 33% over standard burners
- Flammable vapor ignition-resistant design
- Factory-Installed Temperature & Pressure (T&P) Relief Valve



12-Year Limited Warranty Tank/Parts, 1-Year Limited Warranty Labor†, Standard Vent (Not for Mobile Home Use)

Product Type	Model Number	Tank Size Gallons	First Hour Rating	Natural Gas‡ BTU Input	Recovery 90° Rise - Gallons/ Hour	Energy Factor	Height Δ	Diameter	Est. Annual Cost of Operation
12-Year Limited Warranty Tank/Parts, 1-Year Limited Warranty Labor†, Standard Vent									
Short	12 40 NACS*	40	69	40,000	41	.62	51 1/2"	22"	\$263
Tall	12 40 NACT	40	70	40,000	42	.62	62"	20"	\$263
Tall	12 50 NQCT*	50	92	50,000	51	.60	60 3/4"	22"	\$272
Tall	12 50 NACT	50	88	40,000	41	.62	60 3/4"	22"	\$263

For propane gas water heaters, change "N" to "P" in the model number. For example: 12 40 NACS would become 12 40 PACS.
 *Not available in propane gas. †Some propane gas models have slightly lower inputs than natural gas models, which may reduce First Hour Rating and recovery by up to 3 gallons on propane models.
 Δ Height dimension is to the top of the draft diverter. ‡For complete information consult written warranty.
 Dimensions and specifications subject to change without notice in accordance with our policy of continuous product improvement.

9
YEAR



The 9-Year Self-Cleaning Gas Water Heater offers years of dependable, low-cost hot water.

- Available in 40- and 50-gallons, First Hour Ratings up to 88 gallons
- Up to 40,000 BTU input
- Self-cleaning PEX dip tube helps maintain efficiency and reduce maintenance
- 9-year tank and parts limited warranty; 1-year labor warranty
- Environmentally-Friendly, CFC-Free foam insulation reduces standby heat loss
- Advanced electronic gas control valve assures tighter temperature control
- Heavy-duty anode rod provides extra protection against tank corrosion
- Eco-Friendly Green Choice® gas burner — reduces NOx emissions by 33% over standard burners
- Flammable vapor ignition-resistant design
- Factory-Installed Temperature & Pressure (T&P) Relief Valve



9-Year Limited Warranty Tank/Parts, 1-Year Limited Warranty Labor†, Electronic Thermostat (Not for Mobile Home Use)

Product Type	Model Number	Tank Size Gallons	First Hour Rating	Natural Gas‡ BTU Input	Recovery 90° Rise - Gallons/Hour	Energy Factor	Height Δ	Diameter	Est. Annual Cost of Operation
Tall	9 40 NKCT	40	70	40,000	41	.62	62"	20"	\$263
Short	9 40 NKCS	40	69	40,000	41	.62	51 1/2"	22"	\$263
Tall	9 50 NKRT	50	88	40,000	41	.60	60 3/4"	21"	\$272

For propane gas water heaters, change "N" to "P" in the model number. For example: 9 40 NKCT would become 9 40 PKCT.

‡Some propane gas models have slightly lower inputs than natural gas models, which may reduce First Hour Rating and recovery by up to 3 gallons on propane models. †For complete information consult written warranty.

Δ Height dimension is to the top of the draft diverter.

Dimensions and specifications subject to change without notice in accordance with our policy of continuous product improvement.

6
YEAR



The 6-Year Gas Water Heater offers the broadest selection of models, one for any application.

- Available in 30- to 100-gallons, First Hour Ratings up to 88 gallons
- Up to 40,000 BTU input
- Self-cleaning PEX dip tube helps maintain efficiency and reduce maintenance
- 6-year tank and parts limited warranty; 1-year labor warranty
- Environmentally-Friendly, CFC-Free foam insulation reduces standby heat loss
- Advanced electronic gas control valve assures tighter temperature control
- Glass-lined tank with anode rod protects against tank corrosion
- Eco-Friendly Green Choice® gas burner — reduces NOx emissions by 33% over standard burners
- Factory-Installed Temperature & Pressure (T&P) Relief Valve



6-Year Limited Warranty Tank/Parts, 1-Year Limited Warranty Labor†, Mechanical Thermostat (Not for Mobile Home Use)

Product Type	Model Number	Tank Size Gallons	First Hour Rating	Natural Gas‡ BTU Input	Recovery 90° Rise - Gallons/Hour	Energy Factor	Height Δ	Diameter	Est. Annual Cost of Operation
Short	6 30 NOCS	30	62	35,500	36	.63	50"	20"	\$259
Tall	6 30 NOCT	30	67	35,500	36	.63	61 3/4"	18"	\$259
Short	6 40 NBCS	40	69	40,000	41	.62	51 1/2"	22"	\$263
Tall	6 40 NBCT*	40	70	40,000	41	.62	62"	20"	\$263
Tall	6 40 NOCT	40	67	35,500	36	.62	62"	20"	\$263
Tall	6 50 NBRT	50	88	40,000	41	.60	60 3/4"	21"	\$272
Short	6 75 XRRS	74	N/A	75,100	81	N/A	61"	26 1/2"	N/A
Tall	6 100 XRRT	100	N/A	75,100	81	N/A	70 1/2"	27 3/4"	N/A
Tall	6 30 NORBT**	30	64	35,500	36	.63	61 3/4"	16"	\$259
Short	6 30 NORBS**	30	56	35,500	36	.63	50"	18"	\$259
Short	6 40 NBRBS**	40	67	40,000	41	.62	51 1/2"	20"	\$263
Tall	6 40 NBRBT**	40	70	40,000	41	.62	62"	18"	\$263

For propane gas water heaters, change "N" to "P" in the model number. For example: 6 30 NOCS would become 6 30 POCS.

*Not available in propane gas. ‡Some propane gas models have slightly lower inputs than natural gas models, which may reduce First Hour Rating and recovery by up to 3 gallons on propane models. †For complete information consult written warranty.

Δ Height dimension is to the top of the draft diverter.

**Shipped with Factory Insulation Blanket.

Dimensions and specifications subject to change without notice in accordance with our policy of continuous product improvement.



The Mobile Home Gas Water Heater offers versatile features.



- All models meet HUD requirements for manufactured housing installation
- Available in atmospheric (standard-vent) or sealed combustion (direct-vent) designs (Roof Jack Kits available for direct-vent models, with intake air and exhaust vents)
- Convertible gas control for natural or propane gas operation
- 6-year tank limited warranty; 1-year parts limited warranty
- Glass-lined tank with anode rod protects against corrosion
- Eco-Friendly Green Choice® gas burner — reduces NOx emissions by 33% over standard burners
- Factory-Installed Temperature & Pressure (T&P) Relief Valve
- Side taps for easy installation

ROOF JACK KITS

12" Roof Jack Kit supplied with direct-vent models.
Optional longer length kits available.



Mobile Home Standard-Vent w/ Convertible Control for Natural or Propane Gas, 6-Year Limited Warranty Tank/Parts, 1-Year Limited Warranty Labor†

Product Type	Model Number	Tank Size Gallons	First Hour Rating	Natural Gas‡ BTU Input	Recovery 90° Rise - Gallons/Hour	Energy Factor	Height Δ	Diameter	Est. Annual Cost of Operation
MH	6 30 NOMT	30	55	35,500	36	.63	61 1/2"	18"	\$259
MH	6 40 NOMT	40	62	35,500	36	.62	61 3/4"	20"	\$263
Mobile Home Direct-Vent									
MH	6 30 MDV	30	49	30,000	31	.63	58"	18"	\$259
MH	6 40 MDV	40	61	32,000	33	.62	58 3/4"	20"	\$263

‡All models ship from the factory as Natural Gas and are convertible to Propane Gas with factory supplied components.
†For complete information consult written warranty.
Δ Height dimension is to the top of the draft diverter.
Dimensions and specifications subject to change without notice in accordance with our policy of continuous product improvement.



The Ultra Low NOx Gas Water Heater is available in 6-, 9-, and 12-Year versions.



- Enhanced combustion system
- All models meet South Coast Air Quality Management District Ultra Low NOx emission requirements
- First Hour Ratings up to 91 Gallons
- Flammable vapor ignition-resistant design
- Flexible 3" or 4" venting option
- Smooth, efficient, and quiet operation
- Available in 30- to 74-gallon models

Ultra Low NOx, 12-, 9-, or 6-Year Limited Warranty Tank/Parts, 1-Year Limited Warranty Labor† (Not for Mobile Home use)

Product Type	Model Number	Tank Size Gallons	First Hour Rating	Natural Gas BTU Input	Recovery 90° Rise - Gallons/Hour	Energy Factor	Height Δ	Diameter	Est. Annual Cost of Operation
Tall	12 40 UNACT	40	71	40,000	42	.63	62"	20"	\$259
Tall	12 50 UNACT	50	91	40,000	43	.62	60 3/4"	22"	\$263
Tall	9 40 UNKCT	40	71	40,000	42	.63	62"	20"	\$259
Tall	9 50 UNKCT	50	91	40,000	43	.62	60 3/4"	22"	\$263
Tall	6 30 UNORT	30	55	33,000	36	.63	61 3/4"	16"	\$259
Tall	6 40 UNBCT	40	71	40,000	42	.63	62"	20"	\$259
Short	6 40 UNBCS	40	69	40,000	41	.62	51 1/2"	22"	\$263
Tall	6 50 UNBCT	50	91	40,000	43	.62	60 3/4"	22"	\$263
Short	6 75 URRS	74	N/A	75,100	81	N/A	62 1/16"	25 1/4"	N/A
Tall	6 40 UNBRT	40	71	40,000	43	.62	62"	18"	\$263
Tall	6 50 UNBRT	50	91	40,000	43	.60	60 3/4"	20"	\$272
Tall	9 40 UNKRT	40	71	40,000	43	.62	62"	18"	\$263
Tall	9 50 UNKRT	50	91	40,000	43	.60	60 3/4"	20"	\$272

Ultra Low NOx available in natural gas only.
†For complete information consult written warranty.
Δ Height dimension is to the top of the draft diverter.
Dimensions and specifications subject to change without notice in accordance with our policy of continuous product improvement.

PUMP TANKS

A Pump Tank is a must for any home that uses a pump to draw water from a well.



- It ensures that the pump will run for at least a minute, as required by pump manufacturers, to reduce wear on pump
- It provides a supplemental water supply for use between pump cycles, to reduce the number of cycles throughout the day, and prolong pump life
- It helps maintain water pressure within the home's plumbing system, ensuring proper operation of the dishwasher and washing machine, plus robust flow for showering and bathing

Pre-Pressurized Diaphragm Tanks

- Strong, flexible butyl rubber parabolig diaphragm, powder-coated inner shell for permanent separation of air and water
- In-line models from 2 through 14 gallons, designed for installation directly into the cold water line
- Free-standing models from 14 through 119 gallons



PUMP TANKS

Pump Tanks continued

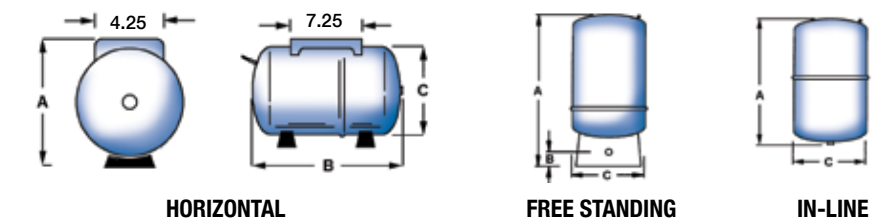


CUT-AWAY VIEW

SIZING CHART			
1	2	3	4
Number of Water Fixtures	Estimated Pump Size	Diaphragm Tank Models	"Standard" Tank Sizes
UP TO 7	5-7 GPM*	PMDH-20	42 GALLON
8-10	10 GPM*	PMD-32 or 36	82 GALLON
10-13	12-15 GPM*	PMD-52	82 GALLON
13-16	16-20 GPM*	PMD-65	120 GALLON
17-28	20 GPM*	PMD-86, PMD-119	220 GALLON

*GPM = Gallons Per Minute

Dimensions and specifications subject to change without notice in accordance with our policy of continuous product improvement.



PUMP TANKS

MODEL	VOLUME (US GAL)	DRAWDOWN 30-50 PSI	CONN. SIZE NPT (INCHES)	A (INCHES)	B (INCHES)	C (INCHES)	SHIPPING WEIGHT (LBS)
FREE-STANDING PUMP TANKS							
PMD-14	14	4.3	1 F	24 3/4	2 1/4	15 3/8	26
PMD-20	20	6.1	1 F	32 3/4	2 1/4	15 3/8	30
PMD-32	32	9.9	1 F	45 1/2	2 1/4	15 3/8	40
PMD-36	36	11.2	1F	32 3/8	2 1/4	20	45
PMD-52	52	16.1	1 1/4 F	38 5/8	2 1/4	23 3/8	77
PMD-65	65	20	1 1/4 F	46 5/8	2 1/4	23 3/8	87
PMD-86	86	26.7	1 1/4 F	59	2 1/4	23 3/8	105
PMD-119	119	37.0	1 1/4 F	61 1/4	2 1/2	26	165
IN-LINE PUMP TANKS							
PMDI-2	2	.6	3/4 M	10 3/16	-	8 1/4	5
PMDI-5	4.5	1.4	3/4 M	14 3/4	-	11	9
PMDI-7	7	2.3	3/4 M	21 1/16	-	11	14
PMDI-14	14	4.3	1 M	23 1/2	-	15 3/8	25
HORIZONTAL PUMP TANKS							
PMDH-7	7.3	2.3	3/4 M	12 7/8	21 1/8	11	16
PMDH-14	14	4.3	1 M	17 3/8	21 3/4	15 3/8	25 1/2
PMDH-20	20	6.1	1 M	17 3/8	27 1/8	15 3/8	30
GLASS-LINED PUMP TANKS							
RG42T-4	42	4.2	1 1/4	49	-	16 1/2	71
RG82-4	82	8.2	1 1/4	62 1/4	-	20	154
RG120-4	120	12	1 1/4	63	-	24	206

Dimensions and specifications subject to change without notice in accordance with our policy of continuous product improvement.



Commercial Gas Water Heaters offer a full range of products for commercial applications. Professional installation recommended.

Light-Duty Gas (not pictured)

- Recommended for applications where required First Hour Rating is 142 gallons or less
- Low NOx emissions; meets Texas requirements
- Standing pilot ignition system
- 3-year tank limited warranty
- Glass-lined tank with anode rod protects against corrosion
- Factory-Installed Temperature & Pressure (T&P) Relief Valve

LIGHT-DUTY NATURAL GAS

Model Number	Tank Size Gallons	First Hour Rating	Input BTUs/Hour	Recovery 100° Rise Gallons/Hour	Height	Diameter	Vent
S75 76NE	74	125	75,100	73	61 1/8"	25 1/2"	4
S100 76 NE	98	142	75,100	73	69 3/4"	26 1/2"	4

Natural gas only.
Height dimension is to the top of the draft diverter.
Dimensions and specifications subject to change without notice in accordance with our policy of continuous product improvement.

Medium-Duty Gas

- First Hour Ratings from 166 gallons to 414 gallons to serve a wide variety of commercial applications
- Equipped with energy-saving automatic flue damper, which helps reduce heat loss when burner is not operating
- Front, top, or rear hot and cold water connection options for installation flexibility in replacement applications
- Intermittent electronic ignition eliminates need for standing pilot, saves energy
- 3-year tank limited warranty
- Glass-lined tank with multiple anode rods to protect against corrosion
- Factory-Installed Temperature & Pressure (T&P) Relief Valve

MEDIUM-DUTY, NATURAL OR PROPANE GAS

Model Number	Tank Size Gallons	First Hour Rating	Input BTUs/Hour	Recovery 100° Rise Gallons/Hour	Height	Diameter	Vent
D71 120NE	71	166	120,000	116	69 3/4"	27 3/4"	5
D81 199NE	81	250	199,000	193	67 1/2"	27 3/4"	6
D100 199NES	100	263	199,000	193	72"	30 1/4"	6
D100 199NET	100	263	199,000	193	75"	27 3/4"	6
D100 250NE*	100	312	250,000	242	72"	30 1/4"	8
D100 275NE*	100	377	275,000	267	72"	27 3/4"	8
D85 365NE	85	414	365,000	354	79 1/2"	27 3/4"	8
D100 250NEA*	100	312	250,000	242	72"	30 1/4"	8
D100 275NEA*	100	377	275,000	267	72"	27 3/4"	8
D85 365NEA	85	414	365,000	354	79 1/2"	27 3/4"	8

Model numbers listed are for natural gas. For propane, change "N" to "P" in model number. For example: D71 120NE would be D71 120PE.

Height dimension is to the top of the draft diverter.

* Indicates models provided with 6" to 8" vent reducer.

Dimensions and specifications subject to change without notice in accordance with our policy of continuous product improvement.



Commercial Gas Water Heaters continued

Medium-Duty Gas – Low NOx

- Available only in Texas
- Low NOx emissions; meets Texas requirements
- Built-in induced draft blower helps ensure peak performance
- Front, top, or rear hot and cold water connection options for installation flexibility in replacement applications
- Intermittent electronic ignition eliminates need for standing pilot, saves energy
- 3-year tank limited warranty
- Glass-lined tank with multiple anode rods to protect against corrosion
- Factory-Installed Temperature & Pressure (T&P) Relief Valve

MEDIUM-DUTY, LOW NOx, NATURAL OR PROPANE GAS

Model Number	Tank Size Gallons	First Hour Rating	Input BTUs/Hour	Recovery 100° Rise Gallons/Hour	Height	Diameter	Vent
N100 200NES	100	263	200,000	193	72"	27 3/4"	6
N100 275NE	100	337	275,000	267	72"	27 3/4"	6

Model numbers listed are for natural gas. For propane, change "N" to "P" in model number. For example: N100 200NES would be N100 200PES.

Height dimension is to the top of the draft diverter.

Dimensions and specifications subject to change without notice in accordance with our policy of continuous product improvement.

Commercial Electric Water Heaters

3-Year, Light-Service Commercial Electric

- Available in 66-, 80-, and 119-gallons
- Two 4500-watt zinc plated copper sheathed heating elements
- 3-year tank limited warranty, 1-year labor limited warranty

Model Number	Tank Size Gallons	Input Watts/Hour	Recovery 100° Rise Gallons/Hour	Height	Diameter
DT 66 20RT	66	4500	18	60 1/4"	22"
DT 80 20RT	80	4500	18	60 1/2"	24"
DT 120 20RT	119	4500	18	61 1/2"	28"

Dimensions and specifications subject to change without notice in accordance with our policy of continuous product improvement.

3-Year, Dairy Barn Electric (not pictured)

- Includes base stand with 4" legs for dairy barn installation
- Two 4500-watt heating elements, each with thermostat adjustable up to 180°F
- 3-year tank limited warranty, 1-year labor limited warranty

Model Number	Tank Size Gallons	First Hour Rating	Input Watts/Hour	Recovery 100° Rise Gallons/Hour	Height	Diameter
3 82 2KDT	80	84	4500	20	64 1/2"	24"

Dimensions and specifications subject to change without notice in accordance with our policy of continuous product improvement.



EXPANSION TANKS

Expansion Tanks for gas and electric water heaters help prevent premature failure.



- A T&P Relief Valve that discharges frequently indicates a thermal expansion problem. It is recommended that a thermal expansion tank should be installed to protect the water heater from premature failure.
- Recommended for installation with every gas and electric water heater, required by code in most areas
- Provides important protection against potential damage to water heater and plumbing system caused by high water pressure
- Helps prevent “water hammer” noises in water pipes

EXPANSION TANKS



MODEL NUMBER	MAX WORKING PRESSURE (PSIG)	TANK VOLUME (GAL)	MAX ACCEPTANCE VOL (60 PSI)	CONN. SIZE (MPT)	DIMENSIONS (INCHES)		WEIGHT (LBS)	HEATER SIZE
					DIAMETER	HEIGHT		
ONE-YEAR LIMITED WARRANTY								
TW 5-1	150	2.1	1.03	3/4"	7.9"	11	4.5	Up to 52 gal.
TW 12-1	150	4.8	2.19	3/4"	10.6"	13.7"	8.2	Up to 100 gal.
FIVE-YEAR LIMITED WARRANTY								
TW 5-5	150	2.1	1.03	3/4"	7.9"	11	4.5	Up to 52 gal.
TW 12-5	150	4.8	2.19	3/4"	10.6"	13.7"	8.2	Up to 100 gal.

Expansion Tank recommendations based on MAX 60 PSI water pressure and 140°F maximum temperature.



PARTS

Parts provide the total package.



When you buy a water heater, you should leave the store with all the parts, tools, and accessories required to do the job right, without a second visit. Parts and accessories are also essential elements of a well-balanced and complete plumbing department that Do-It-Yourself customers and professional contractors depend on for one-stop shopping convenience.

Reliance® offers complete gas and electric water heater installation kits, drain pans, and many other water heater installation parts, plus replacement electric heating elements, gas and electric thermostats, and more. Reliance is your complete neighborhood water heater source.



Reliance[®] Water Heaters

Your neighborhood water heater source.

500 Tennessee Waltz Parkway
Ashland City, Tennessee 37015
www.RelianceWaterHeaters.com

**Customer Assistance,
Technical Support,
and Retailer Information:
1-800-365-4054**

**Parts Orders:
1-800-821-2017
1-800-644-9306 (fax)**

Reliance Water Heater Company reserves the right to make product changes or improvements without prior notice. Dimensions and specifications subject to change without notice in accordance with our policy of continuous product improvement.
Some models may not be available in all markets.

©2016 Reliance[®] Water Heater Company
RPCR000416

