

<http://waterheatertimer.org/How-to-wire-Intermatic-sprinkler-timers.html>

# Model: R8806P101C

## PROGRAM TIME SWITCH WITH 14-DAY "SKIPPER®" MECHANISM



FOR UP TO 60 OPERATIONS PER DAY

**RELAY CONTACTS: DOUBLE POLE SINGLE THROW**

**30 AMP., 3 H.P. 240 VOLTS A.C.**

**CLOCK MOTOR: 208/277 VOLTS - 60 HZ.**

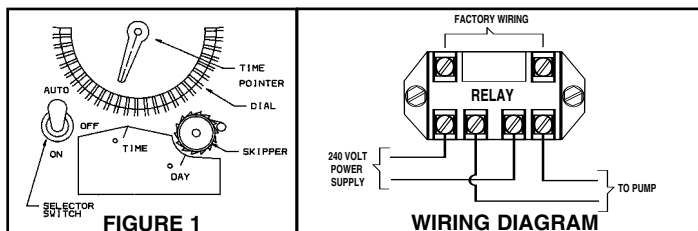
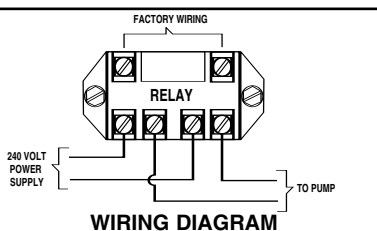


FIGURE 1



WIRING DIAGRAM

### PROGRAMMING INSTRUCTIONS:

- TO SET FIRST ZONE:** For watering, push gold pin into slot on yellow dial at desired ON time. For each 12 minutes of additional watering add one pin **WITHOUT** skipping a slot.
- TO CHANGE ZONES:** Leave one blank slot on yellow dial after ON line (gold pin), and valve will automatically advance to next zone.
- TO SET ADDITIONAL ZONES:** Repeat steps 1 and 2. **REMEMBER** to leave blank space between zones
- TO SET TIME OF DAY:** Turn yellow dial **CLOCKWISE**, until correct line is at end of silver time pointer. Do **NOT** turn silver pointer.
- TO SKIP DAYS:** Turn black skipper wheel **COUNTER-CLOCKWISE** until today's day is in front of "14" arrow. Press pins **DOWN** on days of **NO** watering. The skipper wheel must have all pins **UP** for daily watering.
- PUT SELECTOR SWITCH IN AUTO:** This switch can be used to turn the system **ON** or **OFF** for manual operation without affecting the set program.

**IMPORTANT NOTICE:** Use the one silver pin that is located at Midnight on the yellow dial, it advances the skipper wheel automatically. Do **NOT** use multiple silver pins.

Follow The National Electrical Code and local code requirements when installing this time switch.

**CAUTION:** Always disconnect power at main panel before servicing this Switch or the equipment it controls.

**INTERMATIC INCORPORATED**  
SPRING GROVE, ILLINOIS 60081-9698