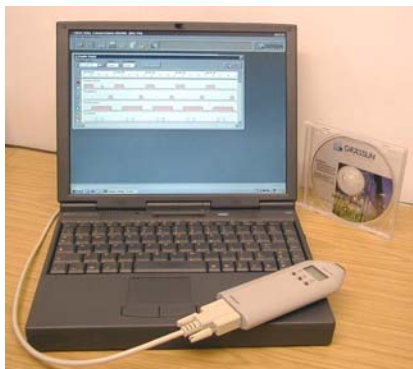


## Talento dialog p.c. programmable annual timeswitches

The talento 800 range of timeswitches has annual programming capability, and is now programmable via Windows - based software.

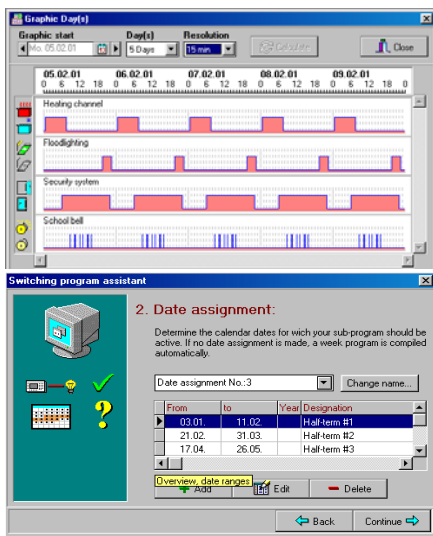
Talento 800 series din-rail timeswitches can be programmed for daily, weekly and annual sequences of operation. The products are available in 1,2,3 & 4-channel forms.



Any dated sequence can be programmed, for any combination of channels. Programming can be carried out using the keypad built-in to the timeswitch, but Grässlin have developed an infra-red interface at the timeswitch, and a p.c. programmable hand-held device which simplifies the programming process, even for complex multi-function operations. The hand-held device will hold up to four annual programmes.



This method gives operations and maintenance personnel the ideal solution for multiple sites where common switching operations are taking place, such as schools, retail outlets, and any series of installations with common control requirements. The programme is created on a p.c., down-loaded to the hand-held (battery powered) 'taxxi' unit, and then transferred at site via the infra-red interface. Programmes can be devised and controlled from a central location. Because programmes are saved as files in the familiar Windows fashion, it is possible to create as many variants as needed, save on disk or e-mail to another p.c. user.



Simple graphic windows allow multi-channel date-related programming with ease.



The programme (however complex), is then down-loaded on - site with the hand-held 'taxxi' in seconds. The taxi is suitable for down- or up-loading programmes to and from the talento time switch.