

# UPM

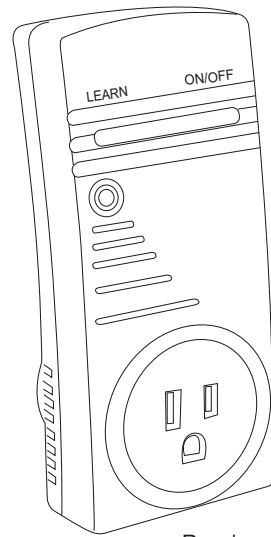
## RC270+TR430 Indoor Remote Control Set

### OWNERS MANUAL

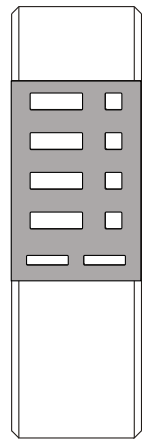
Congratulations on your purchase of a UPM remote control set. Please take the time to read and understand this manual so you can begin to enjoy the convenience this product can offer.

### FEATURES

- 433 MHz RF technology
- Control up to 4 remote receivers
- ON/OFF function
- 15A / 1800W resistive
- Transmission range of up to 130 feet in open area



Receiver



Transmitter

### GETTING STARTED

Batteries are not required in the RC270 receiver. Two button cell batteries are included for the TR430 transmitter

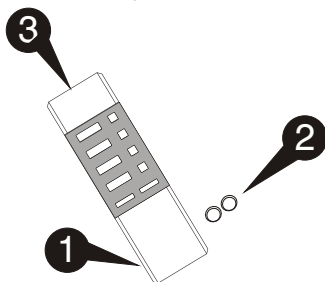
- 1 remove the battery cover from the back of the transmitter
- 2 place two button cell batteries between terminals observing proper polarity then replace cover
- 3 the green LED will light up with any key press once the battery is installed correctly



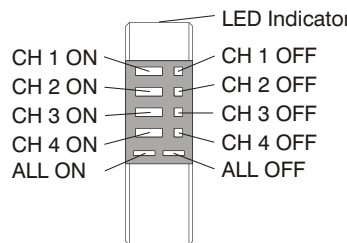
ON/OFF

LEARN - used when programming receiver channel

### battery installation

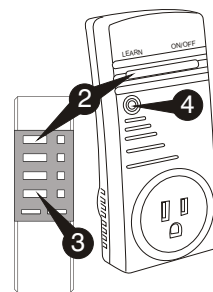


### button descriptions



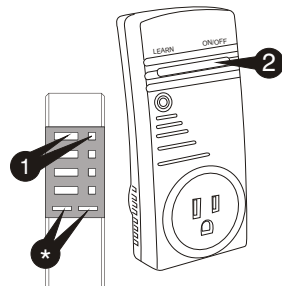
### LEARN FUNCTION

- 1 Plug receiver into wall socket
- 2 Press LEARN on receiver while simultaneously pressing the desired channel button on the transmitter
- 3 Repeat 1 and 2 for any additional receivers (available at your local retailer)
- 4 If LEARN is completed successfully, the LED on the receiver should light up when ON is pressed



### ON/OFF FUNCTION

- 1 Power On/Off by using the ON/OFF keys on the transmitter
- 2 The ON/OFF button on the receiver also turns power on and off
- \* If you have more than one receiver set up, you can use the ALL ON or ALL OFF button to simultaneously turn ALL the receivers ON or OFF.



### TROUBLESHOOTING

#### problem

Transmitter stops turning receiver on and off.

#### solution

Use the LEARN function to reprogram the receiver or  
Check the battery

### FCC COMPLIANCE

This device complies with Part 15 of the FCC Rules of Operation and is subjected to the following two conditions:

1. this device may not cause harmful interference, and
2. this device must accept any interference received, including interference that may cause undesired operation.

### TECHNICAL SPECIFICATIONS

Ratings: 120 V AC  
Maximum Load: 1800W resistive; 600W tungsten  
Transmission Range: up to 130 feet in open area  
Transmission Frequency: 433.92 MHz