

<http://waterheatertimer.org/Paragon-timers-and-manuals.html#EC>

Replacement timers from Intermatic

<http://waterheatertimer.org/Intermatic-ET-series-timers-and-manuals.html#ET1700>

<http://waterheatertimer.org/How-to-wire-GM-40-timer.html>

DOUBLE DUTY CLOCKS

Paragon's EC7000 Series is a 7-day control that allows the flexibility of a different time schedule every day of the week. This digital electronic, single-channel control series allows 16 events to be programmed to accommodate any time-of-day schedule, and allows days to be skipped. Available in NEMA 3R or NEMA 1 to meet the needs of any application, contractors will appreciate this series' ease of installation.

FEATURES & BENEFITS:

- ▶ Resolution enhanced with a 1 to 59-second programmable duration. (EC7001)
- ▶ User-friendly control is easy-to-program with just four keys and a large, easily-read digital display.
- ▶ 7-Day Carryover, unique to Paragon, protects scheduled events from power interruptions via a capacitor-more reliable than batteries.
- ▶ UL and CSA listed means quality and durability are built into every time control.
- ▶ Title 24 Certified.



WHY ▶ *Specify Paragon*

Since 1903, Paragon has been the leader in time and process control technology. As inventor of the 24-hour time switch, Paragon's heritage of patents, unparalleled quality and solutions-driven innovations have made us one of the most recognized names in time control products.

EC7000 SERIES



PHYSICAL

EC7000, EC7001, EC7004

Case NEMA 1 drawn steel enclosure with lockable hasp.

Weight Approximately 2 lbs. (0.9 kg)

Dimensions

Width 4-1/4" (10.8 cm), Height 8-1/8" (23.1 cm), Depth 3" (7.6 cm)

Display Size 1-3/4" x 11/16"

EC7000PC, EC7005PC

(PC suffix designates non-metallic enclosure with Clear-View cover)

Case NEMA 3R Non-Metallic Enclosure

Weight Approximately 2-1/2 lbs. (1.1 kg)

Dimensions

Width 6-9/16" (16.7 cm), Height 8-1/8" (23.1 cm), Depth 3-7/8" (9.8 cm)

Display Size 1-3/4" x 11/16"

ENVIRONMENTAL

Operating Temperature Range -40°F to +140°F

Operating Humidity 0-95% non-condensing

EC7000, EC7001 and EC7004 should be mounted indoors in an environment that is free from excessive contaminants such as oil, moisture and dirt. Models with PC suffix are suitable for both indoor and outdoor use.

HOW TO SPECIFY

Installer shall furnish and install Paragon EC7000, EC7001, EC7004 or EC7005 Electronic Time Control. The single-channel control shall have 24-hour and 7-day programming capability with 16 setpoints available. Control shall have keyboard override until overridden again or until next setpoint is reached. Control shall provide 7 days power outage carry-over without a battery. The digital time display shall be 11/16" in height. Clock format shall be selectable, allowing a choice of 12 hour (AM/PM) or 24 hour time format. An "ON" or "OFF" display will indicate the current status of the load control contacts. Wiring terminals shall have the capability to accommodate #16 to #10 AWG wire. Control shall be housed in a NEMA 1 lockable steel enclosure (EC7000, EC7001 or EC7004) or a NEMA 3R lockable enclosure (EC7000PC or EC7005PC) with a Clear-View cover, to guard against vandalism or tampering.

ELECTRICAL SPECIFICATIONS

Model No.	Contact Configuration	Voltage
EC7000/24V	SPDT	24 Vac
EC7000/120V	SPDT	120 Vac
EC7000PC/120V-RT	SPDT	120 Vac
EC7000/208-277V	SPDT	208-277 Vac
EC7001PC/12VDC	SPDT	12 Vdc
EC7001/24V	SPDT	24 Vac
EC7001/120V	SPDT	120 Vac
EC7001/208-277V	SPDT	208-277 Vac
EC7004/120V	SPST	120 Vac
EC7004/208-277V	SPST	208-277 Vac
EC7005PC/120, 208-240V	DPST	120, 208-240 Vac
EC7005PC/277V	DPST	277 Vac

Frequency 50/60 Hz

Power Consumption 4 VA Max.

Wiring Terminals Accommodate #16 to #10 AWG wire.

UL Listed, CSA Certified, and comply with FCC rules.

(12 Volt and 24 Volt models are neither UL Listed nor CSA Certified.)

RT designates retail packaging.

Power Outage Carry-Over

The program and time-of-day are maintained during a power outage for a minimum of 7 days. A built-in, special capacitor eliminates the inconvenience of battery replacement.

Output Switch Ratings

Model EC7000 & EC7001

Normally open contacts:

20 amp resistive (10 amp CSA) at 24-240 Vac
1 Hp (1/2 Hp CSA) at 120 Vac, 2 Hp (1 Hp CSA) at 240 Vac

5 amp tungsten at 120-240 Vac

6 amp ballast at 120-277 Vac

Normally closed contacts:

10 amp resistive at 24-240 Vac

1/4 Hp at 120 Vac, 1/2 Hp at 240 Vac

3 amp tungsten at 120-240 Vac

3 amp ballast at 120-277 Vac

(12 Vdc Model)

Normally open contacts:

20 amp resistive at 12-28 Vdc

Normally closed contacts:

10 amp resistive at 12-28 Vdc

Model EC7004

Normally open contacts:

30 amp resistive at 24-240 Vac (UL)

30 amp resistive at 120 Vac (CSA)

10 amp resistive at 240 Vac (CSA)

1 Hp at 120 Vac, 2 Hp at 240 Vac

5 amp tungsten at 120-240 Vac

6 amp ballast at 120-277 Vac

Model EC7005PC

Normally open contacts:

30 amp resistive at 120-277 Vac

1 Hp at 120 Vac, 3 Hp at 240 Vac

15 amp tungsten at 120-277 Vac (UL)

5 amp tungsten at 240 Vac (CSA)

20 amp ballast at 120 Vac, 10 amp at 277 Vac

TYPICAL WIRING DIAGRAMS

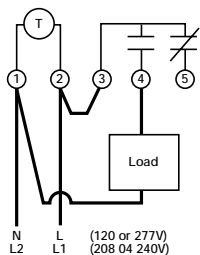


Diagram #1 - SPDT

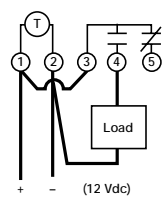


Diagram #2 - SPDT

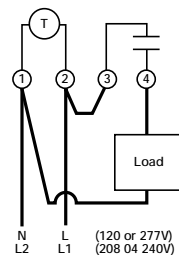


Diagram #3 - SPST

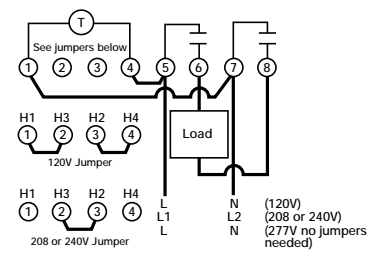


Diagram #4 - DPST

Maple Chase Company
2820 Thatcher Road
Downers Grove, Illinois 60515-4040
United States of America
Telephone +1 800 951 5526
Facsimile +1 630 963 0650

Canada
Director of Canada Sales
5785 Kennedy Road
Mississauga, Ontario L4Z 2G3
Telephone 1 905 890 5956
Facsimile 1 905 890 6098

An Invensys company



Part Number 150-1449