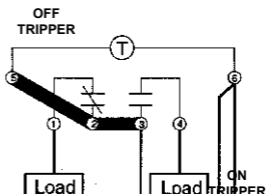
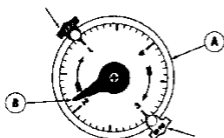



**Model 44005-00**

**A-804-00**

## Directions for Installation and Operation



Contact Rating  
40A 40A Tungsten 120 Vac  
1 hp 120 Vac  
690VA Pilot Duty 120 Vac  
Timing Motor: 120 Vac 60Hz

 LISTED  
CLOCK-OPERATED  
SWITCH 521 H  
E10597

  
LR702787

### **CAUTION - RISK OF ELECTRIC SHOCK**

ALL POWER TO THIS CONTROL MUST BE TURNED OFF AT THE MAIN PANEL BEFORE INSTALLING OR SERVICING. THE CONTROL BEING IN THE OFF POSITION DOES NOT PREVENT SHOCK HAZARD AT THE EQUIPMENT IT CONTROLS.

**TO SET TRIPPERS:** Loosen thumb screw in tripper enough to slide tripper around dial. Set **ON** (bright) tripper at time load circuit should close. Set **OFF** (dark) tripper at time load circuit should open. Add trippers by loosening thumb screw enough to slip tripper on dial, making certain that screw tightens on dial ridge.

**MANUAL OPERATION:** Dial (A) may be turned manually in clockwise direction to check switch operations. Switch may be hand tripped by moving hand trip lever to opposite position.

**TO REMOVE MOVEMENT FROM CASE:** Press spring clip, at right center of case, and lift movement out.

**TO REPLACE MOVEMENT IN CASE:** Insert tabs on the left side of time switch plate into holes in side of case. Push down and snap into place.

 **PARAGON**  
Electrical Products

Maple Chase Company  
2820 Thatcher Road  
Downers Grove,  
Illinois 60515  
1-630-719-5600  
Made in Mexico

Tech Support: 800-732-8400  
Customer Service: 800-951-5526

Paragon Electric Canada, Ltd.  
5785 Kennedy Road  
Mississauga, Ontario L4Z ZG3  
905-890-5956

**120-1415B**