

Pool/Spa Accessories

Emergency Shut Off Switch PA600

The revised Article 680-12 of the National Electrical Code (NEC) now requires the installation of a disconnect switch "...located within sight from all pools, spas..." This Safety Switch is intended for disconnecting electrical equipment from its power source, quickly and safely, in case of emergency. Any person, even if not familiar with the installation or safety procedures, can shut down the connected equipment by simply moving the large red lever to the OFF position. It fits in a single-gang junction box and is rated for outdoor installations.

Specifications:

Electrical Rating: 1 HP, 120V; 3 HP, 240V; 20 Amp Resistive, 120, 240V DPST

Shipping Weight: 0.5 lbs (0.2 kg)

Housing: Electrical grade plastic.

Face Plate: Beige powder coated steel

Agency Approval: CSA/C-US

Fireman Switch 156T4042A

This switch provides coordinated control for any pool/spa heater and any filter pump. It is designed to turn OFF a gas fired pool/spa heater approximately 20 minutes before the filter pump shuts down. This eliminates the problem of pounding and knocking due to overheated water, reduces scale and lime deposits and extends the service life of the heater.

Nonmetallic Hub Kits

**156PA13713A (1/2 in.), 156PA13714A (3/4 in.),
156PA13715A (1 in.)**

All Intermatic Control Centers and Control Panels are approved for direct underwater light connection, eliminating the need for additional junction boxes. These Nonmetallic Hub Kits provide direct connection to 12 Volt and 120 Volt underwater luminaries.

Metallic Hub Kit

156PA14336A (1/2 in.)

The Metallic Hub Kit is used for the same type of applications as the Nonmetallic Hub Kits, but is designed for applications that require red brass conduit.

Stand-Off Posts

21T166A (2), 21T156A (4)

Stand-Off Posts are used for mounting toggle switches inside any Intermatic Pool/Spa Control Center and Control Panel. The switches are normally used for on-demand control pool/spa lighting, landscape lighting, water features, etc. The dead front is detached, the switch knockout is removed from the dead front and the stand-off post is secured to the back panel of the enclosure. The switch is then mounted to the posts with standard mounting screws and the dead front is re-attached.

Back-Feed Retainer Kit

22T904A

A recent revision to the breaker base in all Intermatic Pool/Spa Control Panels now allows installers to back-feed the branch circuits using one breaker, single or double pole, as a main disconnect. In accordance with NEC Article 408.36 (F) -2005, the installation requires an additional fastener/retainer kit.



PA600



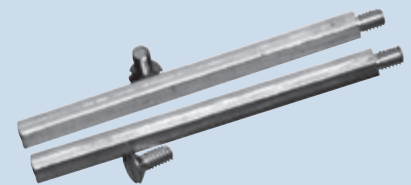
156T4042A



**156PA13713A
156PA13714A
156PA13715A**



156PA14336A



**21T166A
21T156A**



22T904A