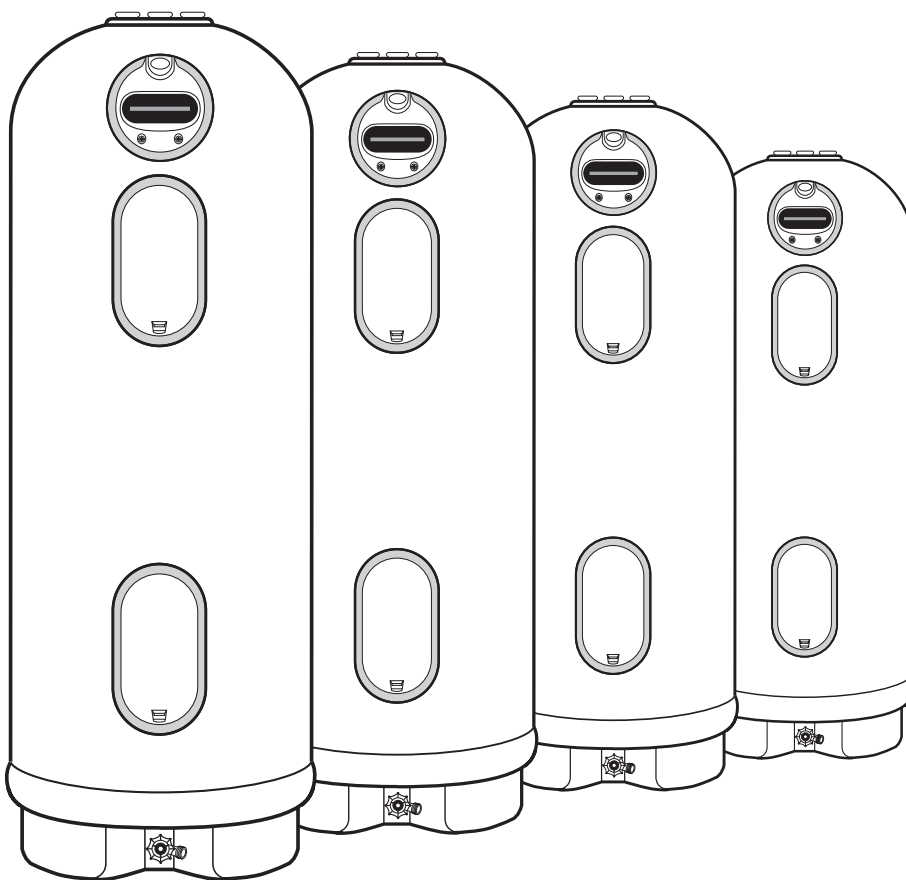


8 V H & D U H 0 D Q X D O  
: L W K , Q V W D O O D W L R Q , Q V W U X F W L

( O H F W U L F

: D W H U + H D W H

6 L Q J O H D Q G ' R X E O H ( O H P H Q W 0 R G H O V  
± \* D O O R Q



7 K H S X U S R V H R I W K L V P D Q X D O  
R Q H W R S U R Y L G H W K H L Q V W D  
G L U H F W L R Q V D Q G U H F R P P H Q G  
L Q V W D O O D W L R Q D Q G D G M X V W  
D Q G W Z R I R U W K H R Z Q H U ± R S  
W K H I H D W X U H V R S H U D W L R Q  
P D L Q W H Q D Q F H D Q G W U R X E O H  
K H D W H U 7 K L V P D Q X D O D O V R

, W L V L P S H U D W L Y H W K D W D O O  
H [ S H F W H G W R L Q V W D O O R S H U  
Z D W H U K H D W H U U H D G W K H L Q  
V R W K H \ P D \ X Q G H U V W D Q G K R  
W K H V H R S H U D W L R Q V , I \ R X G  
W K H V H L Q V W U X F W L R Q V R U D Q  
S U R I H V V L R Q D O D G Y L F H

\$ Q \ T X H V W L R Q V U H J D U G L Q J W  
P D L Q W H Q D Q F H V H U Y L F H R U Z  
Z D W H U K H D W H U V K R X O G E H G  
I U R P Z K R P L W Z D V S X U F K D V H C  
L Q I R U P D W L R Q L V U H T X L U H G

' R Q R W G H V W U R \ W K L V P D Q X D  
F D U H I X O O \ D Q G N H H S L Q D V D  
U H I H U H Q F H

▲ 5 H F R J Q L J H W K L V V \ P E R O D  
L Q G L F D W L R Q R I , P S R U W D O  
, Q I R U P D W L R Q

▲ & D O L I R U Q L D 3 U R S R V L W L R  
7 K L V S U R G X F W F R Q W D L Q V  
N Q R Z Q W R W K H 6 W D W H R I  
F D X V H F D Q F H U E L U W K G H  
U H S U R G X F W L Y H K D U P



6DIHW\ ,QIRUPDWL  
6DIHW\ 3UHFDXWLR



)25 <285 5(&25'6

:ULWH WKH PRGHO VHULDO QXPEHUV  
EDFN FRYHU RI WKH PDQXDO

7KLV LQIRUPDWLRQ LV ORFDWHG RQ WKH  
XQLW

6WDSOH VDOHV VOLS RU FDQFHOOHG F

,QVWDOODWLRQ ,QVWUXFWLRQV  
/RFDWLRQ

:DWHU &RQQHFWLRQV

(OHFWULFDO &RQQHFWLRQV

:LULQJ 'LDJUDP



5(\$' 7+,6 0\$18\$/

,QVLGH \RX ZLOO ILQG PDQ\ KHOSIXO KLG  
\RX ZDWHU KHDWHU SURSHUO\ -XVW D Q  
FDQ VDYH \RX D JUHDW GHDO RI WLPH DQ

2SHUDWLQJ ,QVWUXFWLRQ

6DIHW\ &RQWUROV

:DWHU 7HPSHUDWXUH

<RX 100 ILQG PDQ\ DQVZHUV WR FRPPRQ S  
&DOO )RU 6HUFLFH VHFWRQ ,I \RX UHFL  
7LSV ILUVW \RX PD\ QRW QHGH WR FDOO



5(\$' 7+( 6\$)(7< ,1)250\$7,21

&DUH DQG &OHDQ

'UDLQLQJ

ODLQWHQDQFH

([WHQGHG 6KXW 'RZQ



7KLV LV WKH VDIHW\ DOHUW \IPERO  
DV DQ LQGLFDWLRQ RI ,PSRUWDQW  
7KLV \IPERO DOHUWV \RX WR SRWH  
NLOO RU KXUW \RX DQG RWKHUV

7URXEOHVKRRWLQJ 7LSV

%HIRUH <RX &DOO

)RU 6HUFLFH

\$OO VDIHW\ PHVVDJHV ZLOO IROORZ WKH  
HLWKHU WKH ZRUG 3'\$1\*(5' 3:\$51,1\*' 3&\$  
3127,&('

7KXVH ZRUGV PHDQ

▲ '\$1\*(5

\$QLPPLQHQWO\ KDJDUGRX  
WKDW ZLOO UHVXOW LQ GH  
LQMXU\

▲ :\$51,1\*

\$ SRWHQWLDQO\ KDJDUGRX  
FRXOG UHVXOW LQ GHDWK  
DQG RU GDPDJH WR SURSH

▲ &\$87,21

\$ SRWHQWLDQO\ KDJDUGRX  
PD\ UHVXOW LQ PLQRU RU  
LQMXU\

&XVWRPHU 6HUFLFH

3DUWV /LVW

5HSODFHPHQW 3DUWV

(OHPHQW 5HSODFHPHQW

:DUUDQW\

1RWLFH

\$WWHQWLRQ LV FDOOHG W  
VSHFLILHG SURFHGXUH RU  
D VSHFLILF FRQGLWLRQ

,03257\$17 6\$)(7< ,1)250\$7,21  
 5(\$' \$// ,16758&7,216 %())25( 86,1\*

▲ '\$1\*(5

:\$7(5 7(03(5\$785(6(77,1\*



6DIHW\ DQG HQUJ\ FRQVHUYDWLRQ DUH IDFWRUV WR EH FRQ  
 WHPHUDWXUH VHWLQJ RI ZDWHU KHDWHU\ V WKHUPRVWDW  
 FDQ FDXVH VHYHUH EXUQV RU GHDWK IURP VFDOGLQJ %H VX  
 RXWOLQHG RQ WKH ODEHO SLFWXUHG EHORZ 7KLV ODEHO LV  
 WKH WKHUPRVWDW DFFHVV SDQHO

7LPH 7HPSHUDWXUH 5HODWLRQVKLS

7HPSHUD	WXUH	PH	7R	3URGXFH	D	GHULRXV	%XU
f)	f&		ORUH	WKDQ	PLQXWHV		
f)	f&		ò	WR	PLQXWHV		
f)	f&		\$ERXW	VHFRQGV			
f)	f&		\$ERXW	VHFRQGV			
f)	f&		/HV	WKDQ	VHFRQGV		
f)	f&		/HV	WKDQ	VHFRQGV		
f)	f&		\$ERXW	ò	VHFRQGV		
f)	f&		\$ERXW	VHFRQGV			

7DEOH FRXUWHV\ RI 6KULQHUV %XUQ ,QVWLWXWH

7KH FKDUW VKRZQ DERYH PD\ EH XVHG  
 LQ GHWHUPLQLQJ WKH SURSHU ZDWHU  
 KRPH

▲ '\$1\*(5 +RXVHKROGV ZLWK VPDOO FKLOGUHQ  
 RU HOGHUO\ SHUVRQV PD\ UHTXLUH D f) f  
 WKHUPRVWDW VHWLQJ WR SUHYHQW FRQWDF

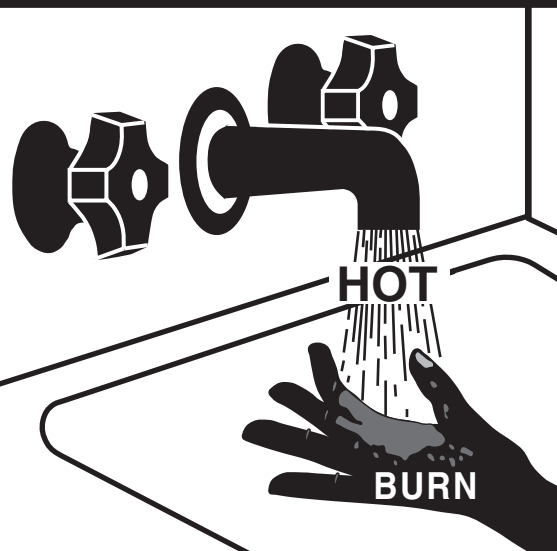
7KH WHPHUDWXUH RI WKH ZDWHU LQ  
 UHJXODWHG E\ WKH DGMXVWDEOH VXU  
 WKHUPRVWDW V ORFDWHG EHKLQG WH  
 SDQHO V 'XDO HOHPHQW KHDWHUV K  
 7R FRPSO\ ZLWK VDIHW\ UHJXODWLRQV  
 ZHUH VHW DW f) EHIRUH WKH ZDWHU  
 VKLSSHG IURP WKH IDFWRU\ &DQGL  
 WR f) f&

5HVHW → W R Q  
 7KHUPRVWDW GLD  
 SRLQW HU  
 WHPHUDWXUH

5HIHU WR WKH 2SHUDWL  
 ,QVWUXFWLRQV LQ WKLY  
 PDQXDO IRU GHWDLOHG  
 LQVWUXFWLRQV LQ KRZ  
 DGMXVW WKH WKHUPRV

127,&( 0L[LQJ YDOYHV DUH DYDLODEOH IRU UHGXFHQJ SRLQW  
 RI XVH ZDWHU WHPHUDWXUH E\ PL[LQJ KRW DQG FROG ZDWHU  
 LQ EUDQFK ZDWHU OLQHV &RQWDFW D OLFHQVHG SOXPEHU RU WKH  
 ORFDO SOXPELQJ DXWKRULW\ IRU ▲ '\$1\*(5 +RXVHKROGV ZLWK VPDOO FKLOGUHQ  
 RU HOGHUO\ SHUVRQV PD\ UHTXLUH D f) f WKHUPRVWDW VHWLQJ WR SUHYHQW FRQWDFW

▲ DANGER



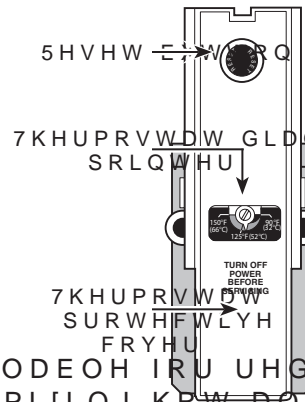
**Water temperature over 125°F can cause severe burns instantly or death from scalds.**

**Children, disabled and elderly are at highest risk of being scalded.**

**See instruction manual before setting temperature at water heater.**

**Feel water before bathing or showering.**

**Temperature limiting valves are available, see manual.**



,03257\$17 6\$)(7< ,1)250\$7,21  
5(\$' \$// ,16758&7,216 %()25( 86,1\*

▲ :\$51,1\*

)RU \RXU VDIHW\ WKH LQIRUPDWLRQ LQ WKLV PDQXDO  
ILUH RU H[SORVLRQ HOHFWULF VKRFN RU WR SUHYHQW  
OLIH

%H VXUH WR UHDG DQG XQGHUVWDQG WKH HQWLUH 8VH  
WR LQVWDOO RU RSHUDWH WKLV ZDWHU KHDWHU ,W PL  
DWWHQWLRQ WR WKH 6DIHW\ ,QVWUXFWLRQV )DLOXUH  
VHULRXV ERGLO\ LQMXU\ RU GHDWK 6KRXOG \RX KDYH  
LQ WKLV PDQXDO RU KDYH DQ\ TXHVWLRQV 6723 DQG  
WHFKQLFLDQ RU WKH ORFDO HOHFWULF XWLWLW\



)25 ,167\$//\$7,216 ,1 7+( 67\$7( 2) &\$/,)25\*

&DOLIRUQLD /DZ UHTXLUHV WKDW UHVLGHQWLDO ZDWHU  
VWUDSSHG WR UHVLVW IDOOLQJ RU KRUL]RQWDO GLVS  
UHVLGHQWLDO ZDWHU KHDWHUV XS WR JDOORQ FDS  
EUDFLQJ LQVWUXFWLRQV FDQ EH REWDLQHG IURP 2IIL  
6XLWH 6DFUDPHQWR &\$ RU \RX PD\ FDOO  
GHDOHU

+RZHYHU DSSOLFDEOH ORFDO FRGHV VKDOO JRYHUQ L  
RI D FDSDFLW\ JUHDWHU WKDQ JDOORQV FRQVXOW  
EUDFLQJ SURFHGXUHV



6\$)(7< 35(&\$87,216

+DYH WKH LQVWDOOHU VKRZ \RX WKH ORFDWLRQ RI WK  
QHFHVVDU\ 7XUQ RII WKH FLUFXLW EHDNHU LI WKH ZI  
ILUH IORRG SK\VLFDQ GDPDJH RU LI WKH (&2 (PHUJH  
RII

● 5HDG WKLV PDQXDO HQWLUH 8VH WKLV KHDWHU  
RU RSHUDWLQJ WKH ZDWHU KHDWHU LQ WKLV PDQXDO

● 8VH WKLV DSSOLDQFH RQO\ UHVLVWLRQV LQ WKLV PDQXDO  
SXUSRVH DV GHVFULEHG LQ WKLV 8VH DQG &DUH  
ODQXDO ● \$OO UHSODFHPHQW SDUWV

● %H VXUH \RXU DSSOLDQFH SURGXEWHU LQVWDOOHU  
LQ DFFRUGDQFH ZLWK ORFDO FRGHV DQG WKH  
SURYLGHG LQVWDOODWLRQ LQVWUXFWLRQV

● 'R QRWWHPSW WR UHSDLU RU UHSODFH DQ\ SDUW



5(\$' \$1' )2//2:7+,6\$)(7<,1)250\$7,21  
&\$5()8//<

6\$9( 7+( 6( ,16758&7,216

# ,QVWDOOLQJ WKH ZDWHU KHDWHU

/RFDO ,QVWDOODWLRQ 5HJXODWLRQV

7KLV ZDWHU KHDWHU PXVW ZHDWKHWDVODDGHGQWR WKH IOR  
 DFFRUGDQFH ZLWK WKHEDLVVWUXFOVDRQKHORFDOVKDW V  
 FRGHV XWLOLW\ FRGHV DXWXPXODWRPXSODGHU LW RU HOHY  
 UHTXLUPHQWV RU LQ WKH OHEDVWV FH RQDRHFDOR FOHDUD  
 FRGHV WKH ODWHVW HGIORRRQ RI WKH 1DWLRQDO  
 (OHFWULFDO &RGH ,W LV DYDLODEOH IURP VRPH  
 ORFDO OLEUDULHV RU FDQ EH SXUFKDWYHG IURP ,QWHUQDV  
 WKH 1DWLRQDO )LUH 3URWHFWLRSYURFDWLRQ  
 %DWWHU\PDUFK 3DUN 4XQFKH0ZDWHUKHDWHU PXVW EH  
 ERRNOHW \$16, 1)3\$ WKH IORRU WR SUHYHQW VHHSDJH  
 ,I WKH ZDWHU KHDWHU LRRVROHWHQVDDQEG WKH IORRU  
 UHVWDXUDQW RU RWKHU DFFRWRQKZKDWHU 16)  
 ,QWHUQDWLRQDO OLVWLQJ LV UHTXLUG LW PXVW

7KH ORFDWLRQ FKRVLQ IRU WKH ZDWHU KHDWHU PXVW WDNH LQWR

/RFDWLRQ

127.&('2\_127XVH  
 ILWWLQJV RQ WRS  
 KDQGOHV RU OLIV

/RFDWH WKH ZDWHU KHDWHU RORRQ LQ VDDO WKH ZDWHU KHD  
 DV QHDU DV SUDFWLFDXQSRWKHWHWHG DIUHDVDRUH QMDU D  
 KHDWHG ZDWHU GHPDQGDSSOLXQFHVXKHDWHK LJK WHPSHU  
 KRWKZDWHUOLQHV FDQ ZDWHWHQVXFKDQG ZRRG EXUQLQ  
 SLOWV ERLOHUV RU IXUQDFHV +LJK WH  
 3ODFH WKH ZDWHU KHDWHU HUHQVXFKDPDQGHU  
 WKDW WKH WKHUPRVWDW DQG HOHPHQW DFFHV  
 SDQHGV FDQ EH UHPRYHGDMR SHUMLQWVHFORRQ XQGHU  
 DQG VHUYLFLQJ VXFK DVUKHPZDWHUKHDWHU VVVWURQJ H  
 RU FKHFNLQJ FRQWUROVVXILFLHQWO\ VXSSRUW WKH ZHLJ  
 ZDWHU KHDWHU ROFH LW LV ILOO  
 7KH ZDWHU KHDWHU DQG ZDWHU OLQHV VKRXOG  
 EH SURWHFWHG IURP IUHH]LQJ WHPSHUDWXUH

8QLW	8QLW	'LPHQVLRQV	6,QLSSHQ	SURIL	LPDWH
&DSDFLW	&DSDFLW	+HLJKWDPH	WHU	WXOO	:HLJKW
*DOORQ	*SHULDO	*DOORQV	OEY	OEY	
6					

+HLJKW LQFOXGHV IDFWRU\ LQVWDOOHG 7HPSHUDWXUH D

# ,QVWDOOLQJ WKH ZDWHU KHDWHU

---

## 7KHUPDO ([SDQVLRQ

'HWHUPLQH LI D FKHFN YDOYHL [WKVMVZDQV MUK HK HLQVHW ZQW/VUV  
OLQH &KHFN ZLWK \RXU ORFDSU EDWXIWHXVQLFOLHVDV HJWF PQ \TKDFN  
EHHQ LQVWDOOHG LQ WKH FRQG VZDWHU HUH OLLHQ HY DQ YH VFBQVIDQWH  
EDFN IORZ SUHYHQWHU RU LKHPDWLEHU SDFQVHR 17DHSUPEVON MJS-DQ  
UHGXFLLQJ YDOYH ZDWHU PHWUDSIRG ZQW/HUH SIRDWHHGHHW[SDQVLF  
FKHFN YDOYH ORFDWHG LQ WFKR FSRQGH QDWWHLQ LQKOH VZDQVLUH KFDI  
FDXVH ZKDW LV UHIHUHG WRFDQ BDKOR VSHG ZDWWXIHVVD MOPU H  
\$ FROG ZDWHU LQOHV OLQH ZSRMKVQROF KWHFN KHDWHU UR UVEDFON  
IORZ SUHYHQWLRQ GHYLFH LVZUECHQBMGFWRUDHF DQVRSBQREO  
ZDWHU V\WHP 7KH VXJJHVWHG PHWKRGR RI FRQV  
\$V ZDWHU LV KHDWHG LW H[SH[SDQVLRQ QROXWR DQGFVDOH DQV  
DQ LQFUHDVH LQ WKH SUHVXVXUHQZLZKWLQ UWQHQZHDVHWHZVHVQWRK  
7KLV DFWLRQ LV UHIHUHG WRKDFN WYDORFD OUH[SDQWRVQKH LO  
,Q DQ 'RSHQ' ZDWHU V\WHP H[SDQGLRQJ VZDQVLUH VZGLFVKLJQHG Z  
H[FHHGV WKH FDSDFLW\ RI WKLQ ZDWHU KRHSUHHUVER ZDV WKH V  
EDFN LQWR WKH FLW\ PDLQ ZKWHUHUWKHUSHOHLVYXQH WKKH DRYLHU  
GLVVLSDWHG HOLPLQDWLQJ WKH UHSHDWHG R  
\$ 'FORVHG ZDWHU V\WHP' KRZKWHU PHWKRGRV FRWUROOL  
H[SDQGLQJ ZDWHU IURP IORZLQ DQVDFNDLQVFRQKH &BQVFW \RX  
VXSSO\ OLQH DQG WKH UHVXUHQZLZKWLQ VZDWHU WKHSDQVLRQJ  
FDQ FUHDWH D UDSLQ DQG GDQVFRQVSRVUHJUH QDQVWKLV

---

## ,QVSHFW :DWHU +HDWHU

,QVSHFW WKH ZDWHU KHDWHU IRU SRVVLEOH GDPDJH &KHFN  
EH FHUWDLQ WKH SRZHU VXSSO\ FRUUVSRQGV WR WKH ZDWHU

---

7HPSHUDWXUH DQG 3UHVXUH 5HOLHI 9DOYH

\$ QHZ FRPELQDWLRQ WHPSHUDWXUH DQG SUHVXUH UHOLHI YDOYH  
9DOYHV DQG \$XWRPDWLF \*DV 6KXW 2II 'HYLFHV IRU +RW :DWHU 6XSSO  
DQG PXVW EH LQVWDOOHG LQ WKH RSHQLQJ SURYLGHG DQG PDUNHG  
YDOYH RI DQ\ W\SH VKRXOG EH LQVWDOOHG EHWZHHQ WKH UHOLHI Y  
LQVWDOODWLRQ RI UHOLHI YDOYHV

▲:\$51.1\* 7KH SUHVXUH QHW EH OHVV WKDQ WKH IRU \$XWRPDWLF LQVWDOODWLRQ RI UHOLHI YDOYH  
UDWLQJ RI WKH UHOLHI YDOYH DV LQGLFDWHG XQWVWKH QURDWLRQ OHU WKDQ  
QRW H[FHHG 36, ODEHO ORFDWHG RQ WKH UHOLHI YDOYH RI UHOLHI YDOYH  
.3\$ WKH PD[LXP ZRUDWLRQ %78+ WKH YDOYH WR DOORZ FRPSOHWH  
SUHVXUH RI WKH ZDWHU KHDWHU DV JUDYLW\ RI WKH UHOLHI YDOYH D  
PDUNHG RQ WKH UHOLHI YDOYH WKH RXWOHW RI WKH UHOLHI YDOYH  
WR D VXLWDEOH RSHQ GDPDQ VR WKH UHOLHI YDOYH  
GLVFKDUJH ZDWHU FDQQDWRU FRQWUJH WKH RU FRQFHDOH  
HOHFWULFDO SDUVV RU SHUVRQDO DQG WR HOLPLQDWLRQ  
SRWHQWLDO ZDWHU GDPDQ WKH UHOLHI YDOYH WKH UHOLHI YDOYH  
VKRXOG EH LQVWDOOHG LQ WKH UHOLHI YDOYH

---

9DFXXP 5HOLHI 9DOYH


127,&( 'R 127 UHFRRHYDFXXP UHOLHI YDOYH ZLWK SUHVXUH RU YDFXXP  
RU WDP SHU ZLWK WKH YDFXXP LQVWDOODWLRQ WKH UHOLHI YDOYH  
UHOLHI YDOYH IRU DQ\ UHOLHI YDOYH  
'RLQJ VR ZLOO YRLG WKH UHOLHI YDOYH ,W LV QRW UHFRRPHQGHG WR SXO  
PDQXIDFWXUH\ ZDWHU\  
7KH FROG ZDWHU LQOHWWK\ XQWVWKH UHOLHI  
YDOYH FRQQHFWHG WR LW &HUWDLQ FRQGLWLRQV  
LQ WKH ILHOG PD\ SURGXFW DDFXXP VR SXO QHGHG RQ WKH X  
DWLYH SUHVXUH FRQGLWLRQ WKH UHOLHI YDOYH WKH UHOLHI YDOYH +HDV  
KHDWHU\V WDN 7KLV UHOLHI YDOYH WKH UHOLHI YDOYH IXOO RI  
FDXVH WKH WDN WR IDLQ SHUVRQDO DQG WKH UHOLHI YDOYH  
YDOYH SURYLGHV D PHDQV WR HOLPLQDWLRQ WKH UHOLHI YDOYH



, QVWDOOLQJ WKH ZDWHU KHDWHU

'UDLQ 3DQ

7KH ZDWHU KHDWHU V&RWF 6 SRQ NLFHV DUH DY  
 ORFDWHG LQ DQ DUHDWZKHU W DUHD ZKHU HR IWKH Z  
 127,&( \$X[LOLDU WKH WDQN RU FRQQHFZDLR QXUZFKDOV HUG V&RVDQZ  
 FDWFK SDQ 0867 GDPDJH WR WKH DUHDG DGD EEBRWRWR LW RU W  
 FRQIRUP WR ORFI ORZHU IORRUV RI WKH VWVWV FVWV 'HUH  
 VXFK DUHDV FDQQRW% EH D LV  
 127,&( :DWHU KHDWHU PPHQGHG WKDW D VX WFK  
 PXVW EH FHQWHUHQ SDQ DGHTXDWHO\ GUDLQH VDOOHG  
 GUDLQ SDQ XQGHU WKH ZDWHU KHDWHU



8QGHU QR FLUFXPVWDQFH Z \$ 'LDPHWHU RI  
 PDQXIDFWXUHU EH KHOG OL ZDWHU KHDWHU  
 ZDWHU GDPDJH LQ FRQQHFWRQ ZLWK  
 WKLV ZDWHU KHDWHU

7R RSHQ GUDLQ WKLV OLQH VKRXO  
 SLWFKHG IRU SURSHU GUDLQDJH

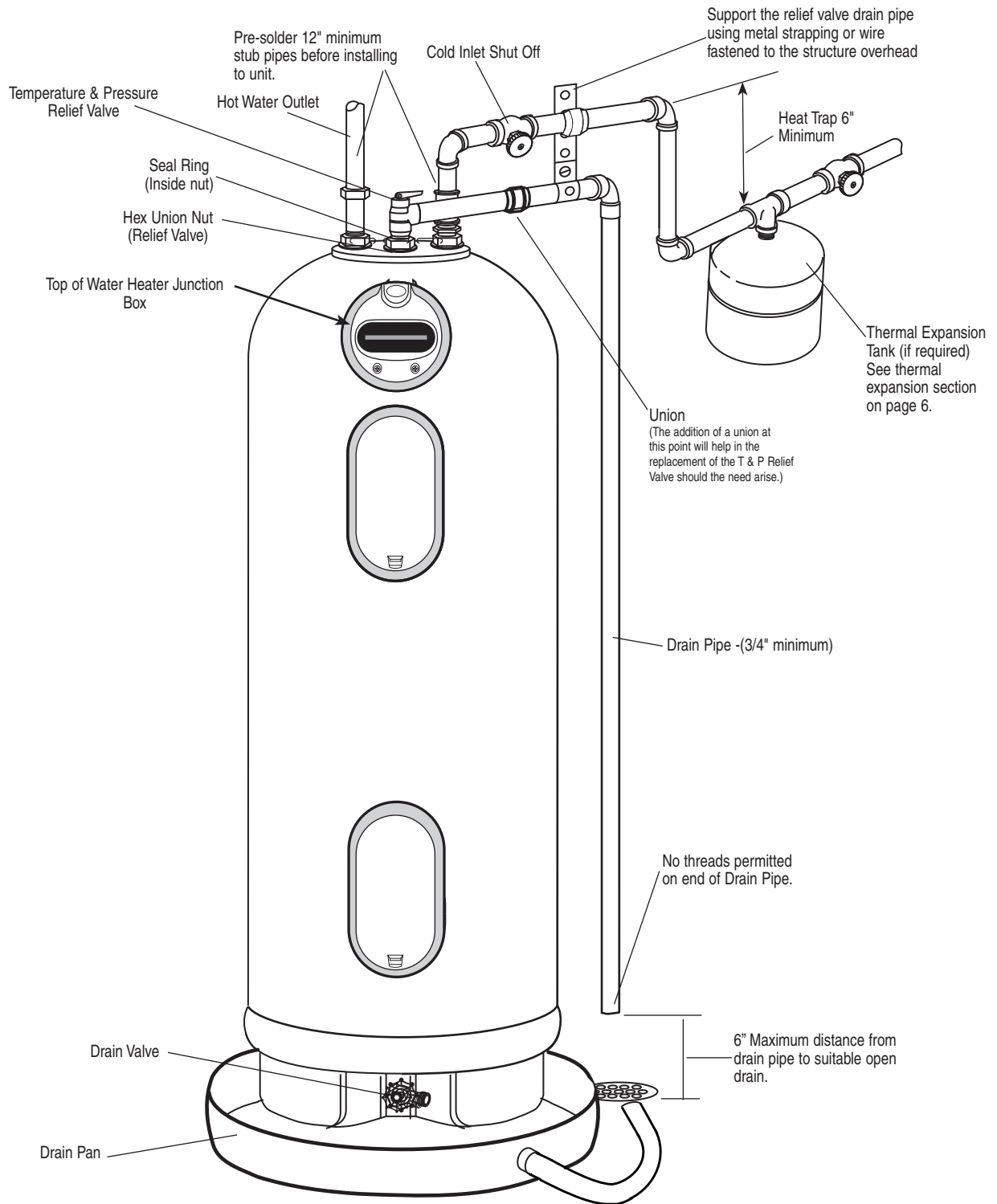
:DWHU 6XSSO\ &RQQHFWRQV

5HIHU WR WKH LOOXVWUDWRU SRQH QVWV IRU 2  
 VXJJHVWHG W\SLFDO LQVWODQW RQRQ KZKHMRLQ  
 LQVWDOODWLRQ RI XQWVXUHQKHEQXWV WR  
 FRSSHU FRQQHFWRUV ZKHUHQEEMWGGGLQJ WK  
 RQ WKH KRW DQG FROG ZDWHU WR OSQHFVILROVU  
 127,&( 'R QRW VR WKDW WKH ZDWHU KHDWHU P SURMLGHG ZLW  
 DWWHPSW WR WXUDQ\ HDVLO\ GLVFRQQHFWHZLORU WFLGYWFKHQ PDQXIDF  
 WLLQJ FRQQHFWRUV WR WKH GLVFRQQHFWHZLORU WFLGYWFKHQ PDQXIDF  
 ZDWHU KHDWHU XQLRQW DU\ 7KH +27 DQG &2!' ZDWHU  
 QXWV WKDW DUH FROG RQV DUH FOVWU\ FROG RQV DU  
 'RLQJ VR ZLOO GDPDJH " 137 RQ DOO PRGHV FROG RQV DU  
 WKH ZDWHU KHDWHU YDOYH LQ WKH FROG RQV DUH FOVWU\ FROG RQV DU  
 YRLG WKH PDQXIDF WFLGYWFKHQ PDQXIDF WFLGYWFKHQ PDQXIDF WFLGYWFKHQ  
 ZDUUDQW\ KHDWHU 7KLW LQFOXGH  
 7KH FROG ZDWHU FRQQHFWRQV LKRWKZDWH  
 FRQQHFWRQ DQG WKH HPSPSHUWDXWJUDIQQ SUHV  
 DQG SUHVXUH UHOLHQW WKHPDUYHQ YDOYH  
 WHPSRUDULO\ GLVFRQQHFWRQV ERREPXWKW WQLW  
 WR HDVH LQVWDOODWLRQ EEBRWRWRWVWKHQ  
 XQLRQ KH[ QXWV FRQQHFWRQV WKH YRLWGLQD  
 WR WKH ZDWHU KHDWHU. 7KH FROGHEWLRQ RI  
 WKHVH SDUVV WR WKH XOLW XVDLQXHDWLRQV  
 IRUP D ZDWHU WLJKW FROGHEWLRQV SURYLGHG  
 WKH UXEEHU VHDO ULQV WKH PDQXIDF WFLGYWFKHQ  
 ZLWK WKH KHDWHU ZKHQ UH LQVWDOOLQJ

▲:\$51,1\* 7KH WDQN RQV V&RWF 6 SRQ NLFHV DUH DY  
 EH IXOO RI ZDWHU DUHDWZKHU W DUHD ZKHU HR IWKH Z  
 LV WXUQH G RQ 7KH FROGHEWLRQ WKH DUHDWZKHU  
 ZDUUDQW\ GRHV QRW FRYHU KHDWHU DQG SLSLQJ  
 GDPDJH RU IDLOXUH SHQXOWLQX RII YDOYH LQ WKH FROG ZDWHU  
 IURP RSHUDWLRQ ZLWK SDQ HPSW \$ VWHDG\ IORZ RI ZDWHU IU  
 RU SDUWLDOO\ HPSW\ WDQN IDXFHW V LQGLFDWHV D IX



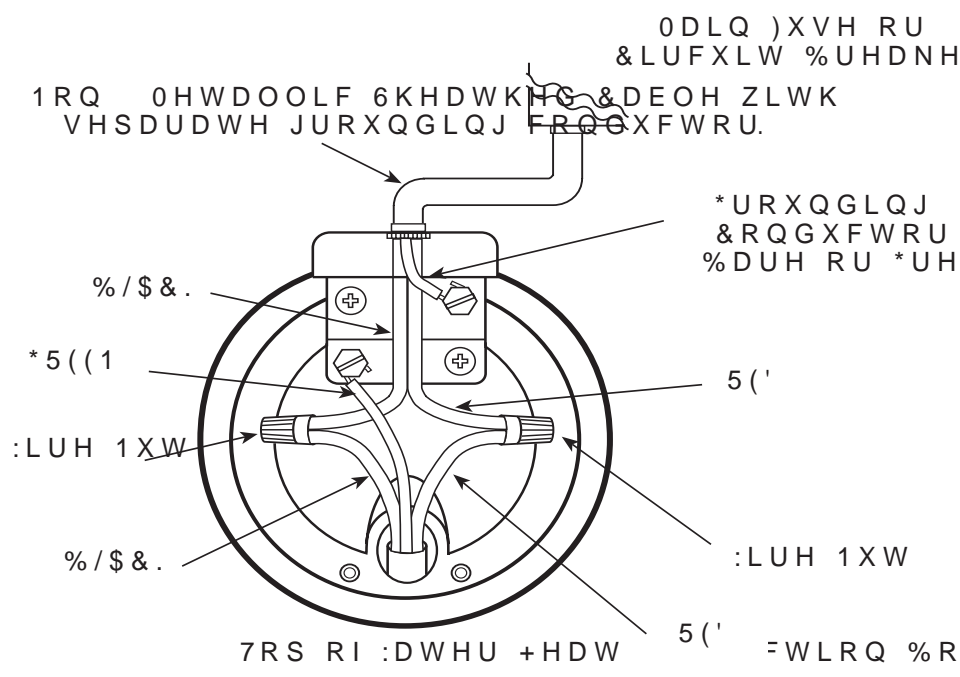
7\SLFDO , QVWDOODWLRQ



# , QVWDOOLQJ WKH ZDWHU KHDWHU

## (OHFWULFDO & RQQHFWLRQV

▲ & \$87.21 7KH SUHVHOFFH  
 RI ZDWHU LQ WKH SLBQJ DQG  
 ZDWHU KHDWHU GRHV QRW SURYLGH TXDOLIL 1  
 VXIILFLHQW FRQGXFWRU IRU D  
 JURXQG 1RQ PHWDOOLF ODWHVW HGLWLRQ RI 12 WKHQ DW OHFWULFDO  
 GLHOHFWULF XQLRQV JEHLEGH 1) 3\$  
 FRQQHFWRUV HWF FDQ FDXVH WKH  
 ZDWHU KHDWHU WR EXHURGHVUHQHOV PXV 2  
 LVRODWHG  
 FRGHV RU ODWHVW HGLWLRQV DQG FROGLW RU  
 (OHFWULFDO & RGH FDEOH QRW DSSURYHG I  
 JURXQG FRQGXFWRU VKI  
 7KH ZDWHU KHDWHU LV FRPSDUWH ZLHG WR  
 WKH MXQFWLRQ ER[ LQVLGH MDENHW DW WKH KHSV  
 IURQW RI WKH ZDWHU KHDWHU PLQDOV 4 WKH IRU  
 " RU " HOHFWULFDO ILWV LVSURXLGHG  
 IRU ILHOG ZLULQJ FRQQHFWLRQV  
 7KH YROWDJH UHTXLUPHQWV DQG ZDWWDJH  
 ORDG IRU WKH ZDWHU KHDWHU DUH VSHFLILHG  
 RQ WKH UDWLQJ SODWH RQ WKH IURQW RI WKH  
 ZDWHU KHDWHU



%UDQFK & LUFXLW 6L]LQJ DQG :LUH 6L]H

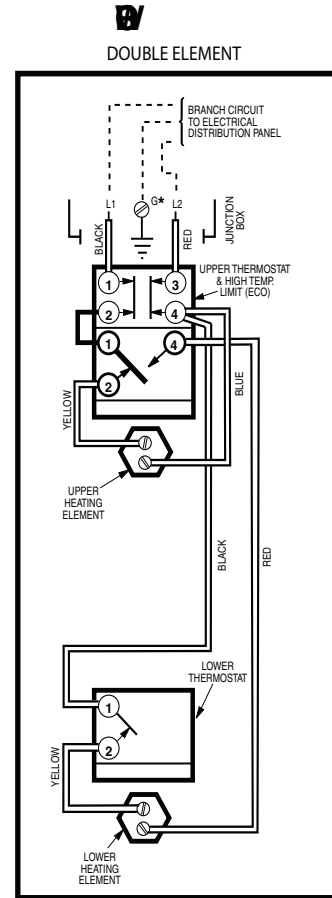
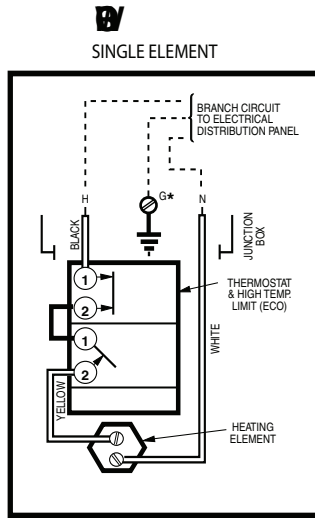
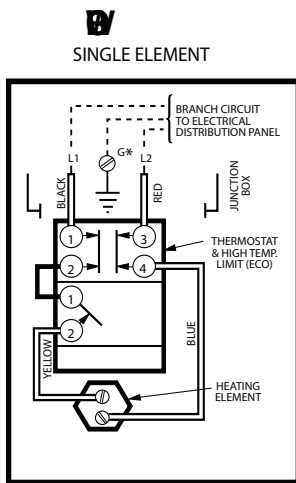
6LQJOH 3  
:LULQJ

7RWDO +HDWHU	DWVHUF :DWVWJHFWLRQ	5HHURPPHQGHG :DWWJHFWLRQ	2YH:WU :DWWJHFWLRQ	WUHQV* :DWWJHFWLRQ	%DVHG RQ 1 &W
		9	9	9	9

▲ '\$1\*(5 (OHPHQWV VKRXOG RQO\ EH UHSODFHG ZLWK DQ HOH  
WKDW ZDV IDFWRU\ LQVWDOOHG DQG FRUHVSRQGV WR WKH

127,&( 7KLV JXLGH UHFRPPHQGV PLQLXP EUDQFK FLUFXLW VL]LQJ DQG ZLUH VL]H  
ZLULQJ GLDJUDPV LQ WKLV PDQXDO IRU ILHOG ZLULQJ FRQQHFWLRQV

:LULQJ 'LDJUDPV



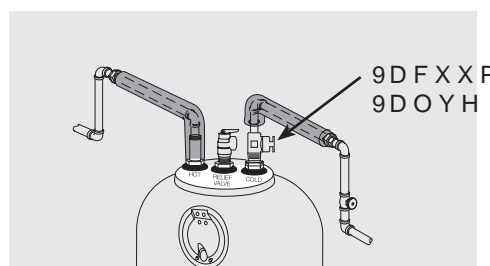
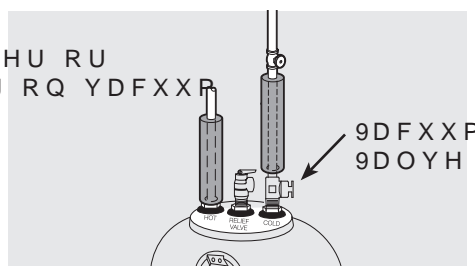
# ,QVWDOOLQJ W KH ZDWHU KHDWHU

## ,QVXODWLRQ %ODQNHVV

▲:\$51,1\* ,I ORFDO IHQHUDO SXEOLF IRU HIWV\$8721RORR DOHFRGHV  
FRGHV UHTXLUH HIWVHODO HDWHUV DUH QRV DQNHVV WR WKH ZDWHU  
DSSOLFDWLRQ RI QVXODWLRQ QVXODWLRQ QVXODWLRQ QVXODWLRQ QVXODWLRQ  
EODQNHV NLWV WKH QVXODWLRQ QVXODWLRQ QVXODWLRQ QVXODWLRQ QVXODWLRQ  
PDQXIDFWXUHU\ UHTXLUH WKH QVXODWLRQ QVXODWLRQ QVXODWLRQ QVXODWLRQ QVXODWLRQ  
LQFOXGHG ZLWK WKH NLWV PDUJH WDNQ KHRSWUDWLRQLR\ ZDWHU QDWHU  
EH FDUHIXOO\ IROORZHU PHHWV RU H\FHHGV WKH IDWLRQDO  
SSOLDQFH (QHUJ\ & RQVHU) QVXODWLRQ QVXODWLRQ QVXODWLRQ QVXODWLRQ QVXODWLRQ  
VWDQGDUGV ZLWK UHVSHFW WR QVXODWLRQ QVXODWLRQ QVXODWLRQ QVXODWLRQ QVXODWLRQ  
VWDQGE\ ORVV UHTXLUHPHQW QVXODWLRQ QVXODWLRQ QVXODWLRQ QVXODWLRQ QVXODWLRQ  
LQVXODWLRQ EODQNHV XQHFFHVVDU\ QVXODWLRQ QVXODWLRQ QVXODWLRQ QVXODWLRQ QVXODWLRQ  
7KH PDQXIDFWXUHU\ ZDUUORW DSSO\ LQVXODWLRQ QVXODWLRQ QVXODWLRQ QVXODWLRQ QVXODWLRQ  
FRYHU DQ\ GDPDJH RU GHYLFHV WKH ZDWHU QVXODWLRQ QVXODWLRQ QVXODWLRQ QVXODWLRQ QVXODWLRQ  
LQVWDOODWLRQ DWWDFKHU WKH QVXODWLRQ QVXODWLRQ QVXODWLRQ QVXODWLRQ QVXODWLRQ  
DQ\ W\SH RI HQHUJ\ VDYLO\ RU RWKHU QVXODWLRQ QVXODWLRQ QVXODWLRQ QVXODWLRQ QVXODWLRQ  
XQDSSURYHG GHYLFHV WKH QVXODWLRQ QVXODWLRQ QVXODWLRQ QVXODWLRQ QVXODWLRQ  
DXWKRULJHG E\ WKH PDQXIDFWXUHU WKH QVXODWLRQ QVXODWLRQ QVXODWLRQ QVXODWLRQ QVXODWLRQ  
RU LQ FRQMXQFWLRQ ZLWK WKH QVXODWLRQ QVXODWLRQ QVXODWLRQ QVXODWLRQ QVXODWLRQ  
7KH XVH RI XQDXWKRULJHG QVXODWLRQ QVXODWLRQ QVXODWLRQ QVXODWLRQ QVXODWLRQ  
GHYLFHV PD\ VKRUWHQ WKH QVXODWLRQ QVXODWLRQ QVXODWLRQ QVXODWLRQ QVXODWLRQ  
KHDWHU DQG PD\ HQGDQJHU OLIH DQG SURSHU QVXODWLRQ QVXODWLRQ QVXODWLRQ QVXODWLRQ QVXODWLRQ  
7KH PDQXIDFWXUHU GLVFODLPV DQ\  
UHVSRQVLELW\ IRU VXFK ORVV RU LQMXU\  
UHVXOWLQJ IURP WKH XVH RI VXFK  
XQDXWKRULJHG GHYLFHV

## +RW DQG &ROG 3LSH ,QVXODWLRQ ,Q

1RWLFHQRW FRYHU RU  
EORFN RSHQLQJ RQ YDFXP  
YDOYH



7\SLFDO YHUWLFDO SLSLQJ DL7\SLFDO KRULJRQWDO SLSLQJ DUUD

)RU LQFUHDVHG HQHUJ\ BOMHBMHMHQIFQVWDFH WKH LQVXODWLRQ QVXODWLRQ QVXODWLRQ QVXODWLRQ QVXODWLRQ  
ZDWHU KHDWHUV KDYH EMRQWKXISODKHWZLDWKLQV D  
WZR VHFWRQV RI SLSRXLUVXODWLRQ QVXODWLRQ QVXODWLRQ QVXODWLRQ QVXODWLRQ

# ,QVWDOODWLRQ &KHFNOLVW

---

\$ :DWHU +HDWHU /RFDWLRQ

- &ORVH WR DUHD RI KHDWHG ZDWHU GHPDQG
- ,QGRRUV DQG SURWHFWHG IURP IUHH]LQJ  
WHPSHUDWXUHV
- \$UHD IUHH RI IODPPDEOH YDSRUV
- 3URYLVLQRQV PDGH WR SURWHFW DUHD IURP ZDWHU  
GDPDJH
- 6XIILFLHQW URRP WR VHUFLH KHDWHU

---

% :DWHU 6XSSO\

- :DWHU KHDWHU FRPSOHWHO\ ILOOHG ZLWK ZDWHU
- \$LU SXUJHG IURP ZDWHU KHDWHU DQG SLSLQJ
- :DWHU FRQQHFWRQV WLJKW DQG IUHH RI OHDNV

---

& 5HOLHI 9DOYH

- 7HPSHUDWXUH DQG 3UHVVXUH 5HOLHI 9DOYH  
SURSHUO\ LQVWDOOHG DQG GLVFKDUJH OLQH UXQ WR  
RSHQ GUDLQ
- 'LVFKDUJH OLQH SURWHFWHG IURP IUHH]LQJ

---

' :LULQJ

- 3RZHU 6XSSO\ YROWDJH DJUHHV ZLWK ZDWHU  
KHDWHU UDWLQJ SODWH
- %UDQFK FLUFXLW ZLUH DQG IXVLQJ RU FLUFXLW  
EUHDNHU RI SURSHU VL]H
- (OHFWULFDO FRQQHFWRQV WLJKW DQG XQLW SURSHUO\  
JURXQGHG

# 2SHUDWLQJ WKH ZDWHU KHDWHU

## 6DIHW\ 3UHFDXWLRQV

- A** 'R WXUQ RII SRZHU WR ZDWHU KHDWHU LI FROG  
LV KDV EHHQ VXEMHFWHG RU VHUYLPHQW SHUIRUP  
ILUH IORRG SK\VLFDQ GDPDJH
- B** 'R 1RW WXUQ RQ ZDWHU KHDWHU LI FROG  
LV ILOOHG ZLWK ZDWHU SRZHU
- C** 'R 1RW WXUQ RQ ZDWHU KHDWHU LI FROG  
ZDWHU VXSSO\ VKXW RII YDOYH LV FORVHG
- D** ,I WKHUH LV DQ\ GLILFXOW\ LQ  
XQGHUVWDQGLQJ RU IROORZLQJ WKH  
2SHUDWLQJ ,QVWUXFWLRQV RU WKH

## 6DIHW\ & RQWUROV

127,&( ,W LV LPSRVH ZDWHU KHDWHU LV FRXUSHWZLHWKHDW SHUDWXUH  
WKDW WKH ILEHUJDFE LQDOWLRQWKHUPRV 1 W DOG WHP SHUDWXUH  
LV UHSODFHG WR DFDWDO ZDWHU (&2 WKHUPRV ORFDWHG  
KHDWHU V SHUIRUPDFH WKH KHDWLQJ HOHPHQW LQ WKH XSSHU  
FRWURO ER[ ,I IRU DQ\ 2 HDPRYH WKH ZDWHU DF  
WHP SHUDWXUH EHFRPHV H[DGLVLOXODWLRQWKHUPRV V  
▲ :\$51,1\* ,I WKH ZDWHU WHP SHUDWXUH OLPLWLQJ FRWURO (&2 EUHDNV  
KHDWHU KDV EHHQ VXEMHFWHG RU UFXLW WR VKH KHDWLQJ HOHPHQW  
IORRG ILUH RU SK\VLFDQ FRWURO RSHUV 7 KH WKHUPRV WDWV SURW  
WXUQ RII SRZHU DQDZDWHUWR V KRXOG QRW EH UHPRYH  
WKH ZDWHU KHDWHU ▲ &\$87,21 7KH FDXVH RI WKH KLJK  
'R QRW RSHUDWH WHP SHUDWXUH FRQGLWLRQ 4 XSHU DFDWDO WKH  
KHDWHU DJDLQ XQWLO DOWHUWVHUYLPHQW WHFKQDFFHQV SDQHO V EHIRUH  
EHHQ WKRURXJKOFRUHFHWHGDFWLRQ PXVW EH WDNHQWHP SHUDWXUH KI  
TXDOLILHG VHUYLPHQW WKH ZDWHU KHDWHU LQ VHUYLPHQW DJDLQ

## :DWHU 7HPSHUDWXUH 6HWWLQJ

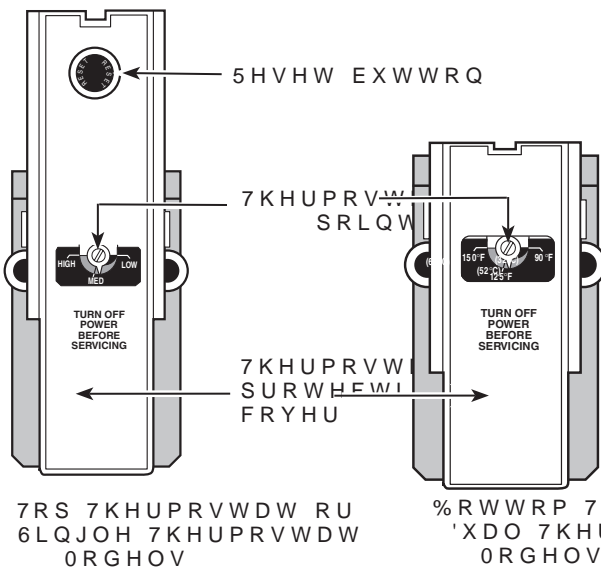
7KH WHP SHUDWXUH RI WKH ZDWHU WHP SHUDWXUH WDKWX ZDWHU HLE R  
▲ '\$1\*(5 7KHUH LV KHDWHU FDQ EH UHJXODFDHG FEDXWHWVLYCHUW KH XUV  
ZDWHU VFDQG SRWHQW SHUDWXUH GLDO RI WKH DQG XUV EVOHU W XURDFH  
WKHUPRVWDW LV VHPVWKHUPRVWDW ZDWHUFRQWHRGXWOKDQG WGHW  
+RXVHKROGV ZLWK WDDPHW DFFHV SDQHO WKH ODEHO RQ WKH ZDWHU  
FKLOGUHQ GLVDEOHG RU HOGHUO\ LV ORFDWHG RQ WKH ZDWHU  
SHUVRQV PD\ UHTXL\XDO HOHPHQW KHDWHU WKHUPRVWDW  
f& RU ORZHU WKHUPRVWDWV WKHUPRVWDW DFFHV SDQH  
VHWWLQJ WR SUHYHQW FRQDFW ZLWK 0 LLOJ YDOYHV IRU UHGXF  
+27 ZDWHU 6DIHW\ DQG HQHUJ\ FRQVWDWV WHP SHUDWXUH PL  
WR EH FRQVLGHUHG ZKHORVGOH WHP SHUDWXUH PL  
WHP SHUDWXUH VHWWLQJ DYDUDWDFH WHP SHUDWXUH PL  
▲ '\$1\*(5 7KH ZDWHU WKHUPRVWDW V 7KH ORZHU WKHUPRVWDW V WHP SHUDWXUH PL  
KHDWHU ZLOO HSHUW WKH WKH JUHDWHU WKHUPRVWDW V WHP SHUDWXUH PL  
KLJKHV ZDWHU WHP SHUDWXUH FRVWV LQIRUPDWLRQ  
ILUVV WLPH WKH XQLW LV RSHUDWHG 7KH FKDUW RQ WKH QH[W S  
DV LV LV FRQGLWLRQHG DQG WKH VDIHW\ UHJXODWLRQ WKH WHP SHUDWXUH PL  
WHP SHUDWXUH WDELOLHV WKHUPRVWDW V DUH IDFWRUV WHP SHUDWXUH PL  
OHVV ZKHUH ORFDO FRGHV UHTXLUH &DQDGLDQ  
PRGHV DUH VHW WR f ) f & 7KHVH  
DUH WKH UHFRPPHQGHG VWDUWLQJ SRLQWV



, I DGMXVWPHQW LV QHFHVVDU\«

7R LQFUHDVH WKH ZDWHU WHPSHUDWXUH RW WKH SRZHU WR WKH Z  
LV UHFRPPHQGHG WR DGMXVW WKH ERWRP  
WKHUPRVWDW RQO\

7R GHFUHDVH ZDWHU WHPSHUDWXUH DQG  
WKHUPRVWDWV RQ WKH XQLW QHHG WR EH  
DGMXVWHG WR WKH ORZHU VHWWLQJ



/2: § f) f & :DWHU 7HPSHUDWXUH  
0(' § f) f & :DWHU 7HPSHUDWXUH  
+,\*+ § f) f & :DWHU 7HPSHUDWXUH

,W LV LPSRUWDQW WKDW WKH ILEHUJODV V  
UHSODFHG WR PDLQWDLQ ZDWHU KHDWHU V SHUIRUPDQFH DQG  
VDIHW\

- ▲ '\$1\*(5 0DNH FHUWDLQ SRZHU W  
WKH ZDWHU KHDWHU LV 2)) EHIR  
UHPRYLQJ DQ\ MDFNHW DFFHVV SD  
DQ\ UHVRQ )DLOXUH WR GR VR  
LQ SURSHU\ GDPDJH ERGLO\ LQ  
GHDWK
- 2 5HPRYH WKH VQDS LQ DFFHVV  
FRYHU ,QVHUW ILQJHU LQWR  
WKH ERWRP RI WKH FRYHU DQ  
UHOHDVH WKH ODWFK 3XOO IH  
UHPRYH WKH FRYHU DQG LQVXO
- 3 5HPRYH WKH VFUHZV WKDW  
WKH MDFNHW DFFHVV SDQHO W  
5HPRYH WKH MDFNHW DFFHVV S  
LQVXODWLRQ H[SRVLQJ WKH WK  
8VH FDUH ZKHQ UHPRYLQJ LQVX  
SDGV
- 4 7KH WKHUPRVWDW SURWHFWLY  
QRW EH UHPRYHG
- 5 8VLQJ D VPDQO VFUHZGULYHU  
WKHUPRVWDW GLDO SRLQWHU V  
WHPSHUDWXUH E\ WXUQLQJ WK  
QRW SU\ RU PRYH WKH ZKLWH S  
SRLQWHU
- 6 5HSODFH WKH UHFWDQJXODU LQ  
WKHUPRVWDW DFFHVV SDQHO  
SDQHO WR WKH XQLW XVLQJ WK  
SURYLGHG 7LJKWHQ WKH VFU  
VQXJ
- 7 5HSODFH WKH DFFHVV SDQHO F  
LQVXODWLRQ DQG VQDS LQ SRV  
V SHUIRUPDQFH DQG
- 8 7XUQ RQ WKH SRZHU WR WKH Z

7LPH 7HPSHUDWXUH 5HODWLRQVKLS LQ 6

7HPSHUDWXUH	7LPH 7R 3URGXFH D 6HULRXV %XUQ
f) f &	ORUH WKDQ PLQXWHV
f) f &	WR PLQXWHV
f) f &	\$ERXW VHFRQGV
f) f &	\$ERXW VHFRQGV
f) f &	/HVV WKDQ VHFRQGV
f) f &	/HVV WKDQ VHFRQGV
f) f &	\$ERXWVHFRQGV
f) f &	\$ERXW VHFRQGV

7DEOH FRXUWHV\ RI 6KULQHUV %XUQ ,QVWLWXWH

# &DUH DQG FOHDQLQJ RI WKH ZDWHU

## 'UDLQLQJ WKH :DWHU +HDWHU

- 1 6KXW RII SRZHU WR 7 KH2SDWQHWKKHGWWDILQ YDOYH
- 2 2SHQ D KRW ZDWHU I 8 KFHWDQDZDWHMUWKHDWHU F  
ZDWHU KHDWHU 5XQ ZDWHU XOWLO FROG
- 3 7XUQ RII WKH FROG ZDWHU VXSSO\ WR 9 &ORVH WKH GUDLQ YDO  
WKH ZDWHU KHDWHU 10 &ORVH WKH UHOLHI YDO
- 4 /HDYH WKH KRW ZDWHU IDXFHW RSHQ
- 5 \$WWDFK D JDUGHQ KRWH WR \$GGLWUBDO LQVWU  
YDOYH RQ WKH ERWWERFDLQWKH ZDWHU QLW DUH O  
KHDWHU DQG GLUHFWWKH KRWH WR D  
GUDLQ 3OHDVH UHIHUHQFH WKH 7F
- 6 /LIW RSHQ WKH KDQGOH WKH WKH UHFWLRQ V  
YDOYH DQG OHDYH RSHQWU XFRSLRQWKH KRZ WR  
ILWWLQJ RQ ZDWHU KHDWHU VRPH  
ZDWHU PD\ EH UHOHDVHG

## 5RXWLQH 3UHYHQWDWLYH 0DLQWHQD

▲ '\$1\*(5 %HIRUH 3URSHUO\ PDLQWDLQH UHQDUHZDWHUWKHQRVHDWHG Q  
PDQXDOO\ RSHUDWLRQWKH UHOLHI ZLOO SURYLGH \HDUV RI ZDWHU &EEDWHUWURXEPDHH F  
YDOYH PDNH FHUWDLQQR RQH ZLOO RSHUDWHV IUHHO\ \$OORZ V  
EH HSRVHG WR WKH DQJXUHVHWG WKDW IOXVK WKURXJK WKH GLVFK  
FRPLQJ LQ FRQWDFWZLWKWKH KRWH FRPLQJ LQ SUHYHQWLYH  
ZDWHU UHOHDVHG ERWKRYHE\ WKH XVHU \$ ZDWHU KHDWHU\ V WDN F  
7KH ZDWHU PD\ EH KRW HQRXJK EDVLR IRU VROGV VXVSHQ  
WR FUHDWH D VFDOGWKDYDUGUWKHU UHFRPPHQGHWKWKDWRD SHULRG  
ZDWHU VKRXOG EH UHOHDVHG RYRIDWKH RSHUDWLRQFRUW XQFRPP  
VXLWDEOH GUDLQWRSHUHQWUHOHPHQWV DQG WKH UHOLHI WKRXOG EH  
LQMXU\ RU SURSHUWDO\ EH UHOHDVHGOLWHU\ RI ZDWHU\ EH GUDL  
HOHFWULF DSSOLDQFH UHSDU  
127,&( ,I WKH WHPSHUDWXUH ORVWDOHFWULFDO DSSOLDQFHVHGHQRVZKWO  
DQG SUHVXUH UHOLHIYDOYH RYRIDWKH RSHUDWLRQFRUW XQFRPP  
RQ WKH KRW ZDWHU KHDWHU VRPH VRXQG ZKHQLR RSHUDWLRQ IDXFHWV  
GLVFKDUJHV SHULRG LQDOO KLVVLQJ RU VLQJ YDOLVLRQV GRYHPPDWLF ZD  
WKLV PD\ EH GXH WR WKH UHOLHI H[FHVVLVYHOYDOKHDOHQHFDLQDWLQGRV  
H[SDQVLRQ LQ D FOHDQWUHQHBD\ UHTXLUH FOHDQWUHQHBD\ UHTXLUH  
V\WHP &RQWDFWWKDQZDMHWG LQVWDOOHU RU SOLVSESQJFRQWUHELFV  
VXSSOLHU RU \RXU SOLVSESQJWKH ZDWHU SLSH V\WHP R  
FRQWUDFWRU RQ KRZ WR FRUHFV DUUHVLQJ GHYLFHV FDQE  
WKLV 'R QRW SOXJWKH UHOLHI RQFH D \HDU WKH UHOLHI UHOHDVH WKH  
YDOYH RXWOHW OHYHU KDQGOH RQ WKH WHPSHUDWXUH SUHVXUH

## 9DFDWLRQ DQG ([WHQG HG 6KXW 'RZQ

,I WKH ZDWHU KHDWHU LVHFRUHQDQDQGGHDLQV BRQ  
H[WHQG HG SHULRG RI WU\BH]WKH DSSOLDQFHWR FRY  
ZDWHU WR WKH DSSOLDQFH XQFRVXUGUHH WZDWHUQRW  
WR FRQVHUYH HQHUJ\ \$IWHU D ORQJ VKXW GRZQ S  
,I WKH ZDWHU KHDWHU LVZDMHWUHQDQDQGGHDLQV BRQ  
ORFDWLRQ ZKHUH LW FRXOEXHQHEJH FZKHFNQGGVE\ TXD  
RSHUDWLRQDO DOO ZDWHUFRQWUHQH GDDNHQFISUWDL  
IURP WKH XQLW DQG SLSLQJFRPISWKH HQDQNLQVHQDQ  
RI ZDWHU DQG IUHH]HV WKH RSHUDWLRQWR O EUHDN  
6HH WKH 'UDLQLQJ WKH :DWHU +HDWHU

# %HIRUH <RX &DOO )RU 6HUYLEFH«



7URXEOHVKRRWLQJ 7LSV  
 6DYH WLPD DQG PRQH\ 5HYLHZ WKH FKDUW RQ WKLV SDJH ILUVW  
 DQG \RX PD\ QRW QHHG WR FDOO IRU VHUYLEFH

3UREOHP	3RVVLEOH &DXVHV	:KDW WR 'R
5XPEOLQJ	Q:DWHU FRQGLWLRQV D EXLOG XS RI VFDOH R RQ WKH KHDWLQJ HO	• Q 5 R R B Y K R B G F F V H D Q WKH KHDWL & R Q V D H D G T X S R V L W H G V H U Y L F H H P H Q W V
5HOLHI YDO GXFLQJ SR QRLVH RU	YUHSVRUH EXLOG XS SLSLDQVLRQ LQ D FOR GUDLQLQJ	• FDXKLVHGLE\ DCKXQDDFØHSW DEOH FRQ V H B X W W E H P F R U U H F W H G & R Q W D F W S O L H U R U S O X P E L Q J F R Q W U D F W F R U U H F W W K L V ' R Q R W S O X J W R X W O H W
1RW HQRXJ KRW ZDWHU	KDRUHQRXVDJH PD\ KDYH FDSDFLW\ RI WKH ZDWHU \$ IXVH LV EORZQ RU WULSSHG (OHFWULF VXSSO\ PD 7KH WKHUPRVWDW PD /HDNLQJ RU RSHQ KR (OHFWULF VHUYLEFH W LQWHUUXSWHG ,PSURSHU ZLULQJ 0DQXDO UHVHW OLPL &ROG ZDWHU LQOHW FROGHU GXULQJ WKH 7RS HOHPHQW GHIHF %RWWRP HOHPHQW G TXDQWLW\ RI KRW ZDWHU	• H : D L F M H B H G W W K F Z D W H U K H D W H U W W H D Q K B B W R W P D O G H P D Q G • F S L U S F O D M H E I X M B N R H U U H V H W F L U F X I • E D R H V X U H H O H F W U L F V X S S O \ W D Q G G L V F R Q Q H F W V Z L W F K L I X V 2 1 S R V L W L R Q • B H H W W K H W R H P O R Ø D W X U H U H J X O D Z D W H U K H D W H U V H F W L R Q R I W K W Z D W H U X D X F B W O I D X F H W V D U H F W R & R Q W B R W H W K D E R F D O H O H F W U L • 6 H H W K H , Q V W D O O L Q J W K H Z D W I R I W K L V P D Q X D O W 6 R H W K H 7 H P S H U D W X U H U H J X O D Z D W H U K H D W H U V H F W L R Q R I W K • W H R S L W U D W X B H P D O E F K H F R O G H U I Z L V D W H U V F R Q W K V W R K H D W • L S H S O B F K R W B D W G W • H B S O D F H V P O H P H Q W • V B M H W R R H K L J K S H U D W X U H U H J X O D Z D W H U K H D W H U V H F W L R Q R I W K • X G B W Q R W D F L O V F R Q J H U V D Q G L Q V X O
:DWHU LV W	RRHKWVHUPRVWDW LV &RYHUV DQG RU LQ	

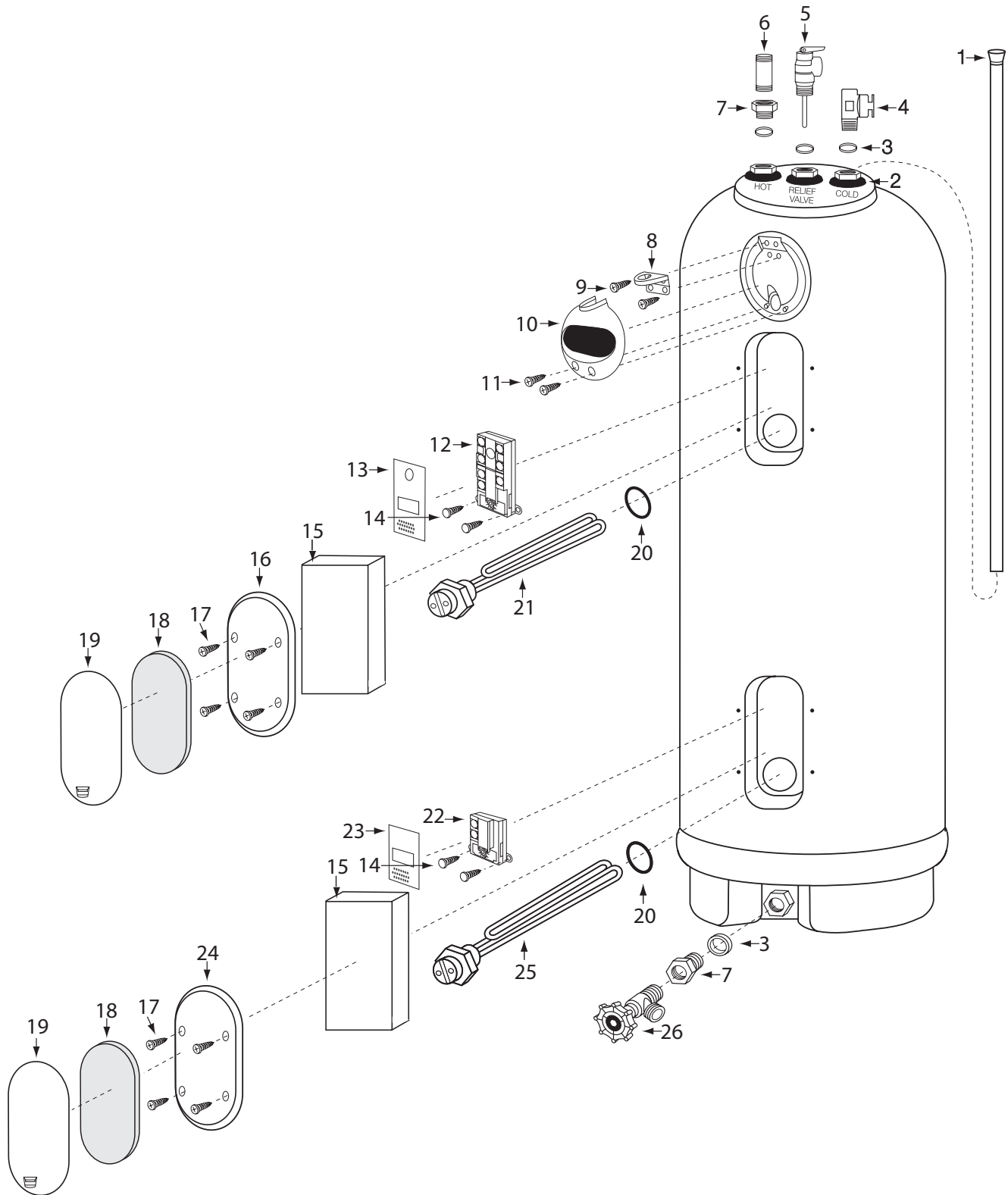
▲ &\$87,21 )RU \RXU VDIHW\ '2 127 DWWHPSW UHSDLU RI HOHPFWULFDO ZLULQJ WK  
 GHYLEFHV 5HIHU UHSDLUV WR TXDOLILHG VHUYLEFH SHUVRQQHO

# 5HSODFHPHQW 3DUWV

.H\ 1R	'HVFULSWLRQ
	'LS 7XEH
	*URPPHW /DUJH
	*URPPHW 6PDOO
	6HDO 5LQJ /DUJH
	6HDO 5LQJ 6PDOO
	9DFXXP 9DOYH \$VVHPEO\
	7HPSHUDWXUH DQG 3UHVXUH 5HOLHI 9DOYH
	1LSSOH 137 [
	5HGXFHU %XVKLQJ 137 [ 137
	.QRFN 2XW %UDFNHW
	6FUHZ [
	-XQFWLRQ %R[ &RYHU
	6FUHZ [
	8SSHU 7KHUPRVWDW
	8SSHU 3URWHFWRU
	6FUHZ [
	7KHUPRVWDW &DYLW\ ,QVXODWLRQ
	8SSHU \$FFHV 3DQHO
	6FUHZ [
	\$FFHV 3DQHO &RYHU ,QVXODWLRQ
	\$FFHV 3DQHO &RYHU
	(OHPHQW *DVNHW
	8SSHU +HDWLQJ (OHPHQW ,QFOXGHV .H\ 1R
	/RZHU 7KHUPRVWDW
	/RZHU 3URWHFWRU
	/RZHU \$FFHV 3DQHO
	/RZHU +HDWLQJ (OHPHQW ,QFOXGHV .H\ 1R
	'UDLQ 9DOYH
	&DS 6FUHZ
	/RFN :DVKHU
▲	(OHPHQW :UHQFK
▲	3LSH :UDS (QHUJ\ .LW
▲	8VH DQG &DUH 0DQXDO
▲	1RW ,OOXVWUDWHG

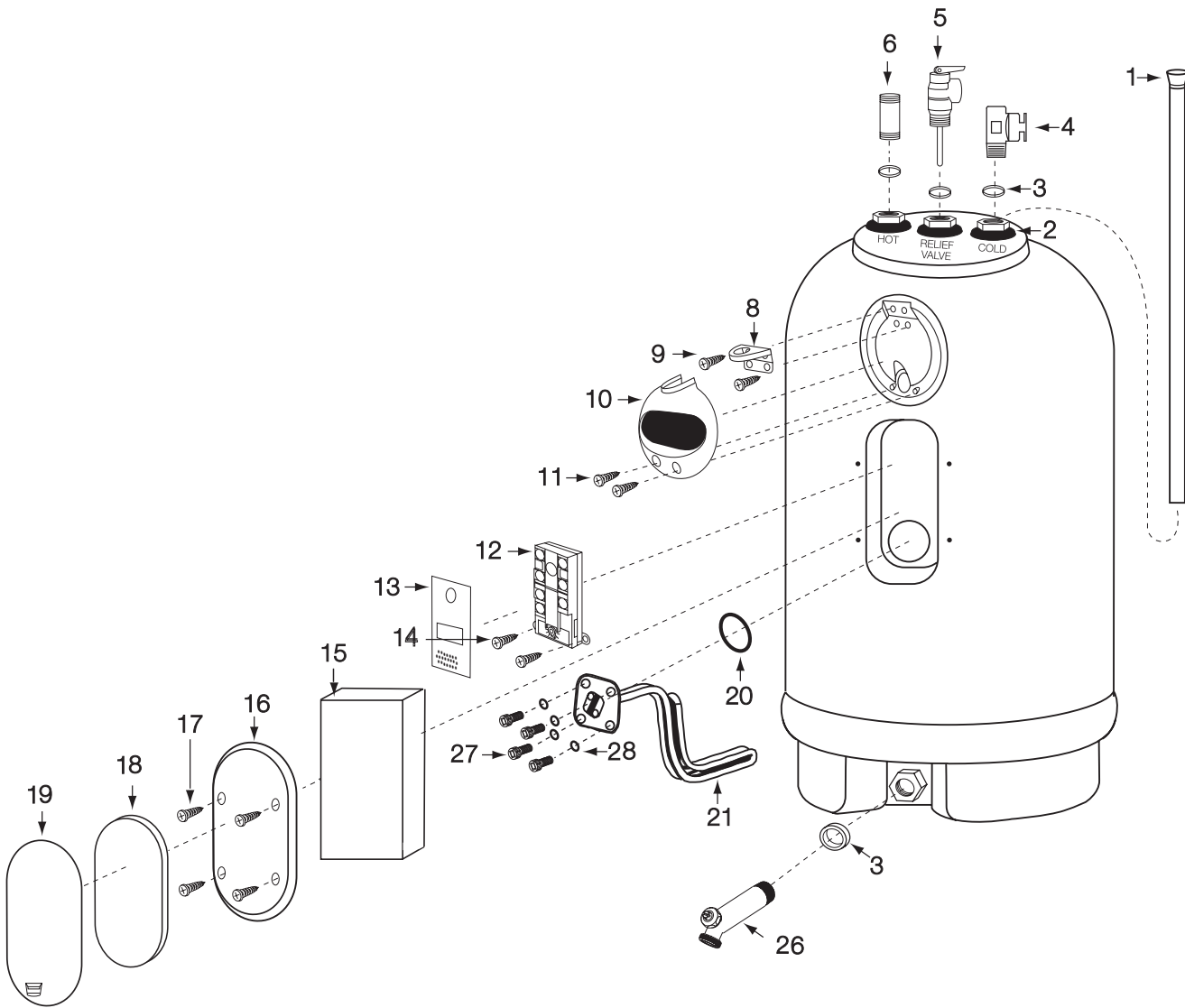
# 5HSODFHPHQW 3DUWV

JDOORQ PRGHOV



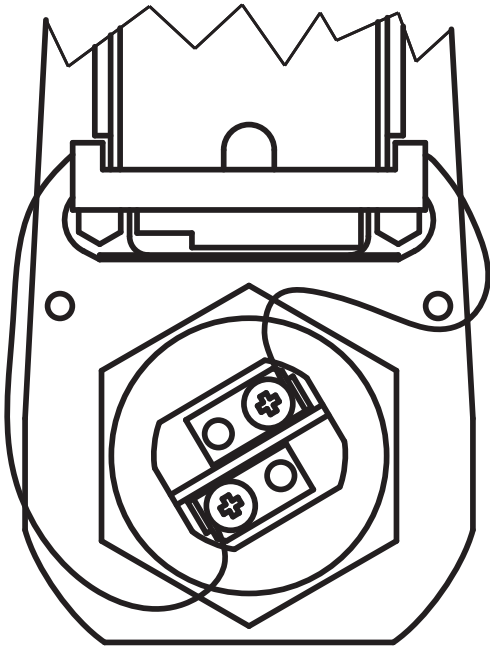
# 5HSODFHPHQW 3DUWV

JDOORQ PRGHOV

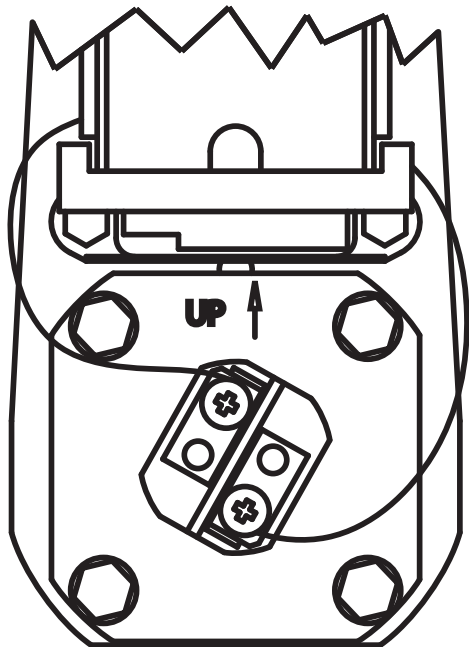




(OHPHQW 5HSODFHPHQW , QVWUXFWLRQ



\*\$//21



\*\$//21

7XUQ RII SRZHU WR WKH QVWUXFWLRQ XQLW DUH FOHD  
 ▲ '\$1\*(5 0DNH FHUWDLQ SRZHU WKUHDGV ZLWK D  
 WR WKH ZDWHU KHDWHU LV 32))  
 EHIRUH UHPRYLQJ DQ\ WDFN (HW7XFFHOMPHQWV  
 SDQHO IRU DQ\ UHDVROVR) WKXJSHU DQG ORZ  
 WR GR VR FRXOG UHVXOWU WDSRSHU WHSODFHF  
 GDPDJH ERGLO\ LQMXPURUHWWDW WKH SRUW  
 DUH LQVWDOOLQJ LW  
 2SHQ D KRW ZDWHU IDXFHW DQG DOORZ  
 ZDWHU WR IORZ XQWLO WKH ZDWHU LV FEROG  
 HOHPHQW JDVNHW LV LQ  
 (PSW\ WKH ZDWHU RXW WZLWKWKXQLW E\  
 IROORZLQJ WKH LQVWUXFWLRQV JLYHQ LQ  
 WKH 'UDLQLQJ WKH :DWHU HDWU LJKWHQ ZLV  
 VHFWLRQ VHH SDJH WFRNHWR ± IW OE  
 5HPRYH WKH VQDS LQ DFFHVVORQKOLWV LQVWD  
 FRYHU ,QVHUW ILQJHUZLQWRWKDFWFKURZORQRWK  
 WKH ERWWRP RI WKH FR3BU XDLQJSWKXJSPH ER  
 WR UHOHDVH WKH ODWFZDV3MOO WKLZDZGHUHQGH  
 UHPRYH WKH FRYHU DQG LQVXODWLRQ  
 127,&( R QRW RYHU WL  
 5HPRYH WKH VFUHZVHOKIDPQWFX'RHQRW DSSC  
 WKH MDFNHW DFFHVV SDQHVOVER WKH XQLW  
 5HPRYH WKH MDFNHW DEFHVV SDQHO DQG  
 LQVXODWLRQ H[SRVLQJ WKH WKHUPRVWDWZL  
 DQG HOHPHQW 8VH FDUWFKHQ DQG WLJKWHQ  
 UHPRYLQJ WKH LQVXODWLRQSDGV  
 )OLS XS WKH ERWWRP RI WKH SODVWWRQRIWK  
 SURWHFWRU XS WR H[SRVH WKH XHFWLRQRIWK  
 KHDWLQJ HOHPHQW LQVWUXFWLRQV RQ UHIL  
 /RRVHQ WKH WHUPLQDO \$IWHU WKH XQLW LV FRP  
 HOHPHQW WR GLVFRQQHFW WKH DQG XQGHU  
 DQG VOLJKWO\ EHQG WKH HOHPHQW LV SURSH  
 WKH HOHPHQW QR ZDWHU OHDNDJH  
 8VLQJ D ZUHQFK RU VRFNHWWRILW WKH  
 LQFK KH[ QXW UHPRYH WKH RQG KHDWLQJ H  
 HOHPHQW )RU DQG 5HSODFHWKHWHFWDQJX  
 XVH D LQFK VRFNHW DQG WKHPRVWDW DFFH  
 WKH EROWV DQG ORFWKZDS3EHO RQ WKH XQL  
 HOHPHQW VFUHZV SURYLGHG 7LJI  
 127,&( \$Q HOHPHQW ZUHQFK LV  
 DYDLODEOH IRU SXUFKDSHSWKH RQFHVV S  
 ZDWHU KHDWHU GLVWULLEQWLRQ DQG VQDS  
 127,&( 0DNH VXUH WKH XQLW RQSRZHU WR WKH

# LIMITED WARRANTY

## Marathon Electric Water Heaters

### EXCLUSIVE WARRANTY – LIMITATION OF LIABILITY

This Limited Warranty is the only Warranty for this unit given by Water Heater Innovations, a subsidiary of Rheem Manufacturing Company. No one is authorized to make any other warranties on our behalf. ANY IMPLIED WARRANTIES, INCLUDING MERCHANTABILITY, OR FITNESS FOR A PARTICULAR PURPOSE, SHALL NOT EXTEND BEYOND THE APPLICABLE WARRANTY PERIODS SPECIFIED PREVIOUSLY. RHEEM'S SOLE LIABILITY, WITH RESPECT TO ANY DEFECT, SHALL BE AS SET FORTH IN THIS LIMITED WARRANTY, AND ANY CLAIMS FOR INCIDENTAL OR CONSEQUENTIAL DAMAGES (INCLUDING DAMAGE FROM WATER LEAKAGE) ARE EXCLUDED. Some states do not allow limitations on how long an implied warranty lasts, or for the exclusion of incidental or consequential damages, so the above limitations or exclusions may not apply to you.

This Limited Warranty gives you specific legal rights, and you may also have other rights, which vary from state to state.

We suggest you immediately complete the information below and retain it in the event warranty service is needed. Reasonable proof of the date of installation of your water heater may be required to establish its "in-warranty" status. Otherwise, the Effective Date of this Limited Warranty will be the date of manufacture of the water heater plus ninety (90) days.

### GENERAL

Water Heater Innovations, Inc. warrants its products to be free from factory defects in materials and workmanship, under normal use and service, for the Applicable Warranty Period. At its option, Water Heater Innovations will repair or replace the defective water heater, or defective component part(s), in accordance with the terms of this Limited Warranty, if it fails in normal use and service during the Applicable Warranty Period. The replacement water heater must be manufactured by Water Heater Innovations. The replacement component part(s) must be Water Heater Innovations authorized component part(s). The replacement unit will be warranted only for the unexpired portion of the original unit's Applicable Warranty Period.

### WARRANTY EXCLUSIONS

This Limited Warranty will **not** cover:

- a) Service trips to your home to teach you how to install, use, or maintain this water heater or to bring the water heater installation into compliance with local building codes and regulations.
- b) Damages, malfunctions or failures resulting from failure to install the water heater in accordance with applicable building codes/ordinances or good plumbing and electrical trade practices.
- c) Damages, malfunctions, or failures resulting from improper installation or failure to operate and maintain the water heater in accordance with the manufacturer's instructions provided.
- d) Performance problems caused by improper sizing of the water heater or electric service voltage, wiring, or fusing.
- e) Damages, malfunctions, or failures caused by operating the water heater with modified, altered, or unapproved parts installed.
- f) Damages, malfunctions, or failures caused by abuse, accident, fire, flood, freeze, lightning, acts of God, and the like.
- g) Tank failures (leaks) caused by operating the water heater in a corrosive or contaminated atmosphere.
- h) Damages, malfunctions, or failures caused by operating the water heater with an empty, or partially empty, tank (also known as "dry firing").
- i) Damages, malfunctions, or failures caused by operating the unit at water temperatures exceeding the maximum setting of the operating, or high limit, control.
- j) Tank failures caused by operating the water heater when it is not supplied with potable water, free to circulate at all times.
- k) Damages, malfunctions or failures caused by subjecting the tank to pressures greater than those shown on the rating label.
- l) Damages, malfunctions or failures resulting from the use of any attachment, including any energy saving device, not authorized by Water Heater Innovations.
- m) Units installed outside the fifty states (and the District of Columbia) of the United States of America and the provinces of Canada without prior authorization from Water Heater Innovations.
- n) Units that have had their rating labels removed. A water heater should not be operated if the rating label is removed.

### LABOR, SHIPPING, AND PROCESSING COSTS

This Limited Warranty does **not** cover any **labor expenses** for service, repairs, reinstallation, permits, or removal and disposal of the failed water heater, or defective component part(s). All such expenses are your responsibility.

Water Heater Innovations will pay the **transportation costs** for an "in-warranty" replacement water heater, or "in-warranty" replacement component part(s), to a convenient delivery point (selected by Water Heater Innovations) near the place the original water heater, or original component part(s), is located. You must pay any local freight charges, including the cost of returning the failed water heater, or defective component part(s) to a convenient shipping location (selected by Water Heater Innovations).

Water Heater Innovations does **not** authorize, recommend, or receive any benefit from any **claims processing or similar fees** charged by others to process warranty claims for any Water Heater Innovations water heater or component part(s). Water Heater Innovations will **not** reimburse any party for these, or any other, fees not specifically covered in this Limited Warranty document.

**THE EFFECTIVE DATE**

The Effective Date of warranty coverage (or the beginning of the Applicable Warranty Periods) is the date of installation of the water heater, if properly documented. If you are not able to provide the documentary proof of the date of original installation, the Effective Date will be the date of manufacture of the water heater plus 90 days.

**APPLICABLE WARRANTY PERIODS**

Category	Typical Application	MR, CMR, & MTS Series		MHD Series	
		Tank	Parts	Tank	Parts
Residential: a single family dwelling	<ul style="list-style-type: none"> <li>Owned by the original purchaser with proof of purchase</li> </ul>	LIFETIME	6 YEARS	10 YEARS	5 YEARS
	<ul style="list-style-type: none"> <li>The original purchaser does not have proof of purchase; or</li> <li>Home is not owned by the original purchaser</li> </ul>	15 YEARS			
	<ul style="list-style-type: none"> <li>The unit is part of a rental program; or</li> <li>The unit is moved from its original installation location</li> </ul>	10 YEARS	5 YEARS		
Commercial	<ul style="list-style-type: none"> <li>A residential rental property; or</li> <li>Installed in a commercial building</li> </ul>		3 YEARS		
Agricultural	<ul style="list-style-type: none"> <li>Any agricultural application (ex dairy barn)</li> </ul>				
Industrial	<ul style="list-style-type: none"> <li>Any application where the water is used as a part of an industrial or commercial process</li> </ul>	5 YEARS	1 YEAR	5 YEARS	1 YEAR

**HOW TO MAKE A CLAIM**

Any claim for warranty assistance must be made promptly. First, determine if your water heater is “in-warranty” (that is, within the Applicable Warranty Period). You can determine your unit’s warranty status by obtaining the complete model number, the complete serial number, and the date of installation of your water heater by contacting Water Heater Innovations Water Heaters’ Warranty Department (telephone (800) 321-6718) during normal business hours to determine if the Applicable Warranty Period has expired. If your water heater is “in-warranty”, contact the plumber, or mechanical contractor, that installed it for assistance with the warranty repairs, or replacement, required. You may also select a plumber, or mechanical contractor, from your local Yellow Pages to assist you. Water Heater Innovations Technical Service personnel are available to assist you by telephone (800) 321-6718 to answer your questions about the operation or repair of your water heater during normal business hours. Be prepared to provide the plumber, mechanical contractor, or Water Heater Innovations

Technical Service person you call with the complete model number, the complete serial number, and the date of installation of your water heater in addition to an explanation of your water heater problem. If an exact replacement is not available, Water Heater Innovations will provide you with the current model of your water heater, or component part(s), or a replacement unit with comparable operating features. If government regulations or industry certification or similar standards require the replacement water heater, or replacement component part(s), to have features not found in the defective water heater, or the defective component part(s), you will be charged for the difference in price represented by those required features. If you pay the price difference for those required features and/or to upgrade the size and/or other features available on a replacement new water heater, you will also receive a complete new Limited Warranty (with the full Applicable Warranty Period) for the replacement new water heater. Water Heater Innovations reserves the right to inspect, or require the return of, the failed water heater or the defective component part(s). Each “in-warranty” failure water heater must be made available to Water Heater Innovations (with the rating label and all the component parts intact) in exchange for the replacement water heater. Each defective “in-warranty” component part to be replaced may be required to be returned to Water Heater Innovations in exchange for the replacement component part. Warranty compensation is subject to validation of “in-warranty” coverage by Water Heater Innovations Claims Department personnel.

- To obtain warranty compensation for an “in-warranty” water heater failure, you must provide Water Heater Innovations with: (at Water Heater Innovations option) either the failed water heater (with the rating label and all the component parts intact) or the complete original rating label (photocopies are not acceptable) removed from the failed water heater; the complete model number and the complete serial number of the Marathon water heater that replaced the failed unit; and the date the original water heater failed. You may also be required to provide documentary proof of the failed water heater’s date of installation to establish its “in-warranty” status.
- To receive warranty compensation for an “in-warranty” defective component part, you must provide WHI with: (at Water Heater Innovations option) either the defective component part or the part number on the failed component part; the complete model number and the complete serial number of the Marathon water heater from which the defective component part was removed; and the date the defective component part failed. You may also be required to provide documentary proof of the date of installation of the Marathon water heater from which the defective part was removed – or the date of purchase of the part (if it was purchased separately) - to establish the “in-warranty” status of the defective component part.

Warranty claim documentation should be mailed promptly to Water Heater Innovations, Warranty Department, 3107 Sibley Memorial Highway, Eagan, MN 55121

Water Heater Innovations Inc.  
3107 Sibley Memorial Highway  
Eagan, MN 55121-1604

) 25 < 285 5 (& 25 ' 6

Owner Information		
Name	Address	
Plumber / Mechanical Contractor – Installer Information		
Name	Address	Telephone Number
Water Heater Information		
Model Number	Serial Number	Date of Installation

1 2 7 ( 6