

How To Read Gas Meter Index

Gas meter has 4 basic dials.

(1) When reading meter, note location of pointer and select lowest number between pointer.

If pointer is between 3 and 4, then reading is 3

(2) each dial rotates clockwise or counterclockwise
First dial is clockwise.

Second dial counter-clockwise

Arrow shows above each dial in Fig 1

(3) When dial reaches 0, the count starts over and dial to left advances by one digit

(4) Each dial is marked with units that it measures
Starting far right:

- First dial: 100 cubic feet to 1000 cubic feet
Pointer between 4 and 5 = 400
- Second dial: 1000 cubic feet to 10,000 cubic feet
Pointer between 4 and 5 = 4,000
- Third dial: 10,000 to 100,000 cubic feet
Pointer between 4 and 5 = 40,000
- Fourth dial: 100,000 to 1,000,000 cubic feet
Pointer between 4 and 5 = 400,000

(5) How much gas did you use this month?

Take reading first day of month

Take reading last day of month

Subtract two readings to get total cubic feet used.

Fig 1 Examples

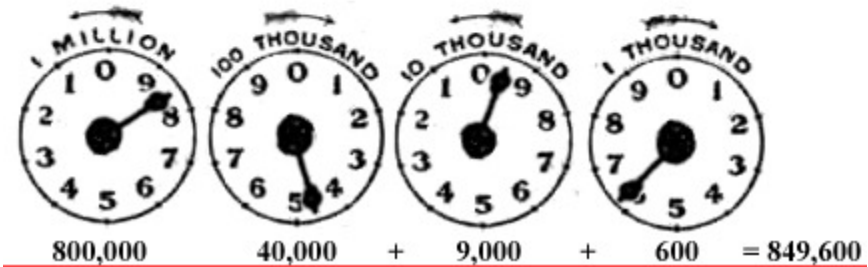
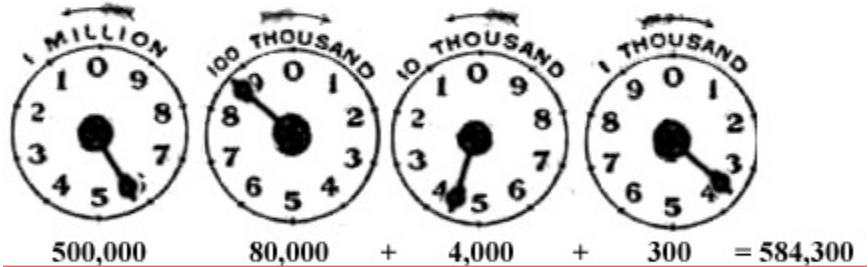
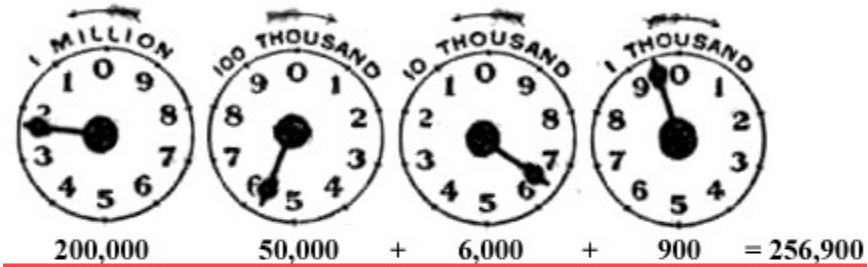
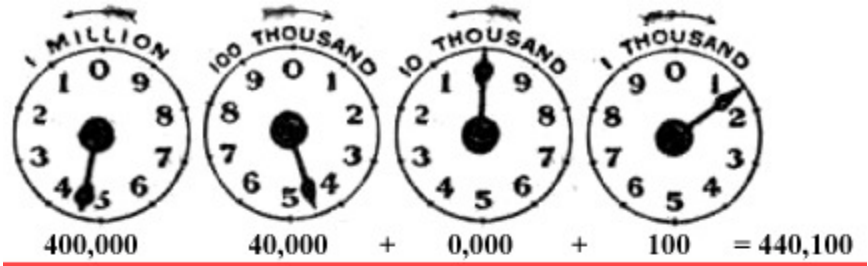


Fig 2 shows photo of gas meter



000,000 30,000 2,000 100 = 32,100 cu ft