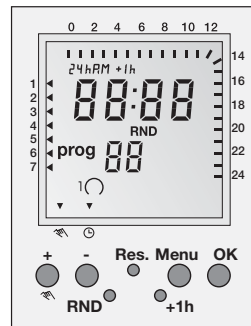


**Instruction Manual
Plug in Digital Time Switch**

**OK
reset**

- I** : Overview of daily switching program
- 24h/pm** : Setting of 24h or am/pm
- +1h** : Summer/winter clock changes
- ←** : Weekday display
- ⊙** : Switching status display ON/OFF
- ↻** : Manual operation / fixed ON / fixed OFF
- ⊙** : Automatic operation
- +/-** : Adjustment keys:
By pressing the key longer than 2 sec. you can adjust the timer in steps of 5 units
- Res.** : Reset
- Menu** : By pressing the menu key programming is terminated and the system reverts to automatic operation
- OK** : Confirmation of programming
- RND** : Random function



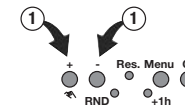
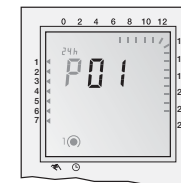
1

- Technical Data**
- Supply voltage see inprint on device
 - Switching capacity see inprint on device
 - Ambient temperature -10°C to +55°C
 - Protection class IP 51 electronic
IP 20 terminal box
 - Accuracy +/- 1/sec day at 20°C
 - Reserve power 3 years from factory at +20°C
 - Shortest switching time 1 min
 - Memory spaces 20

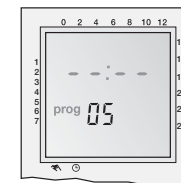
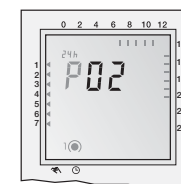
**P0x
prog**

Selecting pre-set programs P01 to P03

Sequence to follow after setting time in the Reset mode.



Select pre-set program (+/-).



Once selected the program desired there are following options:

Menu
terminate programming

OK
Going through pre-set programs to modify selection (any program ON or OFF can be modified by using "+" or "-" keys and confirming with **OK**) or accept it with **OK** key to go to the next free memory location in order to add new user defined programs.

e.g. after selecting P02 you should also program:
Sa-Su 22:30 ON (prog05)
23:00 OFF (prog06)



Safety precautions

- The connection and installation of electrical devices may only be carried out by a qualified electrician.
- Interventions in and changes to the device result in the voiding of the warranty claim.
- Observe your national regulations and the respective safety provisions.
- Switch-off commands have priority over switch-on commands.



Setting of this programmable timer is depending of the user preference to use pre-set programs or defining own programming.

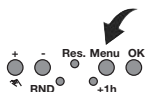
Using Pre-set programs (first time installation)



Using **Reset** key you can adjust the following values:

- 24h or am/pm
- Time (hour and minutes)
- Week day
- Pre-set programs P01 to P03

User defined programming by Menu mode



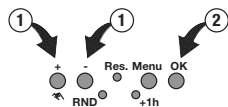
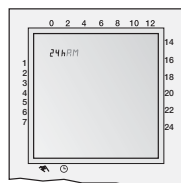
Using **Menu** key you can adjust / review the following values:

- 24h or am/pm
- Time (hour and minutes)
- Week day
- Programs P--



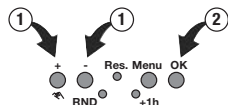
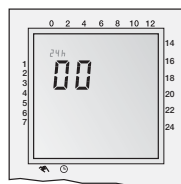
Sequence to follow after selecting programming by pre-set programs or Menu mode.

Set display format 24h or am/pm



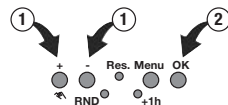
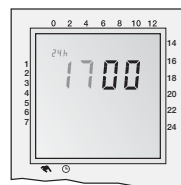
Select 24h or am/pm (+/-) and confirm with **OK**.

Set hour



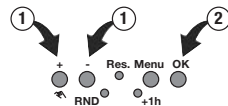
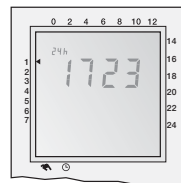
Select hour (+/-) and confirm with **OK**.

Set minutes



Select minutes (+/-) and confirm with **OK**.

Set week day



Select week day (+/-) and confirm with **OK**.

- 1 = Monday 5 = Friday
- 2 = Tuesday 6 = Saturday
- 3 = Wednesday 7 = Sunday
- 4 = Thursday



Programs P01-03

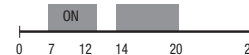
The switching on and off times for programs P01 to P03 are preset (pre).

The user can change these programs.

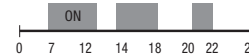
P01: Mo - Su, 1 x ON/OFF



P02: Mo - Su, 2 x ON/OFF



P03: Mo - Su, 3 x ON/OFF



Individual program, P--

Under the menu option P-- you have the option of creating a user-defined program.

This program can be changed at any time. There are up to 20 memory locations available for 10 OFF and 10 ON commands.

You can allocate a corresponding weekday or week block to each memory location.

