

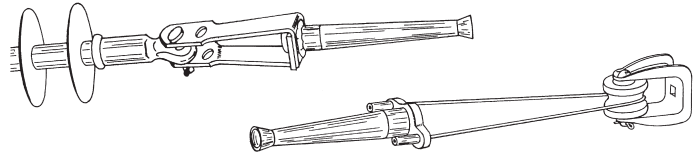


# DEADENDS AUTOMATIC COPPER

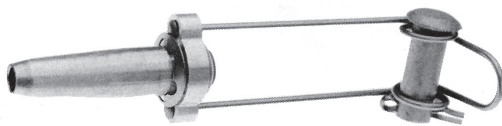
COPPER  
GD500/GD100

DA  
1

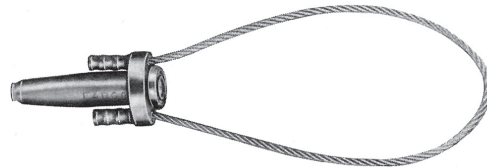
- Fastest method of deadending Copper and Copperweld® conductor.
- Flared mouth of gripping unit permits easy conductor installation.
- Four segment jaw is precision machined and automatically adjusts to the contour of the wire.
- High strength alloy copper tube for gripping Copperweld® conductors
- Available with galvanized steel stirrup clevis or stainless steel Z bail for primary applications.



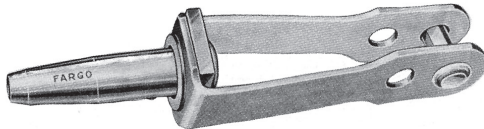
**Material:** **Shell** - High Strength Copper Alloy  
**Jaws** - Copper Alloy  
**Clevis Bail** - Galvanized Steel  
**Z Bail** - Stainless Steel, Formed Wire  
**Flex Bail** - Braided Stainless Steel  
**Semi-flex Bail** - Stainless Steel, Formed Wire



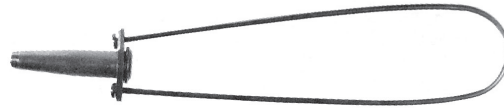
Z Bail



Flex Bail



Clevis Bail



Semi-flex Bail

## Product Data & Conductor Size

CATALOG NUMBER				CONDUCTOR RANGE			APPROXIMATE CONDUCTOR O.D. INCHES (MM)
CLEVIS BAIL	Z BAIL	FLEX BAIL	SEMI-FLEX BAIL	COPPER		COPPERWELD	
				SOLID ASTM-B258	STRAND ASTM-B8	STRAND	
-	-	GD110	-	8	-	-	.12-.13 (3.1-3.3)
GD511*	GD111Z	GD111	GD111R	6	-	-	.16-.17 (4.0-4.4)
GD512*	GD112Z	GD112	GD112R	4	-	8A	.19-.20 (4.9-5.2)
GD513*	GD113Z	GD113	GD113R	3	4	6A	.22-.23 (5.7-5.9)
GD514	GD114Z	GD114	GD114R	2	3	5A	.25-.26 (6.3-6.6)
GD515*	GD115Z	GD115	GD115R	1	2	4A	.28-.29 (7.2-7.4)
GD516	GD116Z	GD116	GD116R	1/0	1	3A	.32-.33 (8.1-8.3)
GD517	GD117Z	GD117	GD117R	2/0	1/0	2A	.36-.37 (9.1-9.3)
GD518	GD118Z	GD118	GD118R	3/0	2/0	-	.40-.41 (10.2-10.5)
GD519	GD119Z	GD119	GD119R	4/0	3/0	-	.45-.46 (11.5-11.8)
GD520	GD120Z	GD120	GD120R	-	4/0	-	.52-.53 (13.2-13.4)
GD521	GD121Z	GD121	GD121R	-	250 KCMIL	-	.57-.58 (14.4-14.7)
GD523	-	-	-	-	300 KCMIL	-	.62-.63 (15.8-16.1)

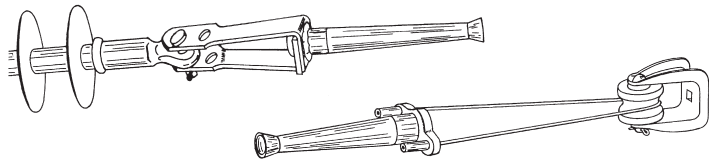
\*RUS Listed  
 Copperweld® is a registered trademark of Fushi Copperweld Inc.



# DEADENDS AUTOMATIC ALUMINUM

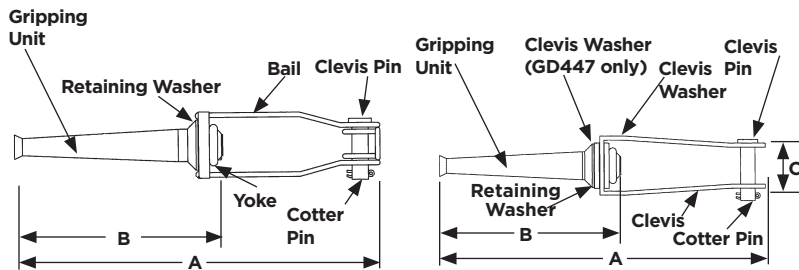
DA  
2

ALUMINUM  
GD400



Z Bail

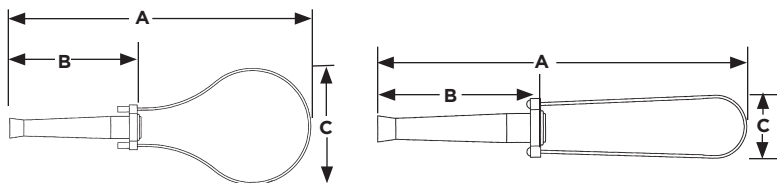
Clevis Bail



Flex Bail



Semi-flex Bail



- Fastest method of deadending ACSR, AAAC, and AAC conductor
- Color coded funnel guide for easy identification. Flared conductor funnel guides ease installation.
- Aluminum alloy shell and inhibitor protected aluminum jaws assure corrosion resistance.
- Available with galvanized steel stirrup clevis or stainless steel Z bail for primary applications. Flexible or semiflexible stainless steel bails can be used on secondary applications.
- See GDW Series for range-taking automatic deadends.

**Note:** For neoprene covered Flex or Semi-flex bail add suffix "N".  
Example GD402AN  
Add suffix "TA" for pulling eye.  
Example GD4442ATA (Fig #1)

**Material:** **Shell** - High Strength Aluminum Alloy  
**Jaws** - Aluminum Alloy  
**Clevis Bail** - Aluminum Alloy or Galvanized Steel  
**Z Bail** - Stainless Steel, Formed Wire  
**Flex Bail** - Braided Stainless Steel  
**Semi-flex Bail** - Stainless Steel, Formed Wire  
**Pulling Eye** - Aluminum Alloy

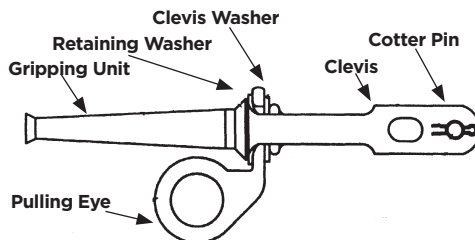


Fig #1

## Product Data & Conductor Size

CATALOG NUMBER	BAIL TYPE	STD. COND. SIZES	DIMENSIONS			OTHER INFORMATION		APPROX. WT. EACH LBS. (KG)
			A	B	C	DIA. RANGE IN. (MM)	COLOR CODE	
GD442A*	CLEVIS	#4 ACSR (6/1) #4 AAAC #4 AAC	11.0	5.0	-	.225-.250 (5.59-6.35)	ORANGE	0.56 (.25)
GD402AZ*	SS Z		10.4	5.0	-			0.43 (.19)
GD402A*	SS FLEX		12.8	5.0	2.0			0.20 (.09)
GD462A*	SEMI-FLEX		12.0	5.0	2.2			0.24 (.10)
GD4442A*	CLEVIS	#4 - #2 ACSR #4 - #2 AAAC #4 - #2 AAC	12.9	7.0	-	.220-.320 (5.59-8.13)	RED-ORANGE	0.63 (.29)
GD4042AZ*	SS Z		12.0	7.0	-			1.00 (.45)
GD4042A*	SS FLEX		13.7	7.0	2.0			0.34 (.15)
GD4642A*	SEMI-FLEX		14.4	7.0	2.2			0.38 (.17)

\*RUS Listed



# DEADENDS AUTOMATIC ALUMINUM (CONTINUED)

ALUMINUM
<b>GD400</b>

DA  
3

**Product Data & Conductor Size**

CATALOG NUMBER	BAIL TYPE	STD. COND. SIZES	DIMENSIONS			OTHER INFORMATION		APPROX. WT. EACH LBS. (KG)
			A	B	C	DIA. RANGE IN. (MM)	COLOR CODE	
GD446A**	CLEVIS	1/0 ACSR 1/0 AAAC 1/0 AAC	12.3	6.4	-	.355-.400 (9.02-10.16)	YELLOW	1.02 (.46)
GD406AZ**	SS Z		14.2	6.4	-			0.20 (.09)
GD406A**	SS FLEX		15.3	6.4	2.0			0.40 (.18)
GD466A**	SEMI-FLEX		15.8	6.4	2.2			0.30 (.14)
GD447**	CLEVIS	2/0 ACSR 2/0 AAAC 2/0 AAC	17.8	9.3	-	.400-.470 (10.15-11.94)	GRAY	2.23 (1.01)
GD407Z**	SS Z		17.6	9.3	-			1.40 (.64)
GD407**	SS FLEX		15.5	9.3	2.0			0.76 (.35)
GD467**	SEMI-FLEX		18.4	9.3	2.2			1.10 (.49)
GD448**	CLEVIS	3/0 ACSR 3/0 AAAC 3/0 AAC	18.9	10.0	-	.450-.530 (11.43-13.46)	BLACK	2.40 (1.09)
GD408Z**	SS Z		18.0	10.0	-			1.40 (.63)
GD408**	SS FLEX		17.6	10.0	2.0			1.16 (.53)
GD468**	SEMI-FLEX		19.0	10.0	2.2			1.10 (.50)
GD449A**	CLEVIS	4/0 ACSR 4/0 AAC 4/0 AAAC	17.5	9.0	-	.505-.595 (12.83-15.11)	PINK	2.43 (1.10)
GD409AZ**	SS Z		17.2	9.0	-			1.40 (.63)
GD409A**	SS FLEX		17.6	9.0	2.0			1.00 (.45)
GD469A**	SEMI-FLEX		18.0	9.0	2.2			1.00 (.45)
GD5205A	CLEVIS	266.8 AAC	11.6	4.6	-	.518-.595 (13.16-15.11)	-	1.32 (.59)
GD1205AZ	SS Z		12.8	4.6	-			1.00 (.45)
GD1205A	SS FLEX		13.6	4.6	2.0			0.64 (.29)
GD1205AR	SEMI-FLEX		14.4	4.6	2.2			0.66 (.29)
GD450*	CLEVIS	266.8 (18/1) ACSR 312.8 AAAC 336.4 AAC(1)	18.5	9.6	-	.603-.666 (15.32-16.92)	BROWN	2.70 (1.22)
GD410Z*	SS Z		20.4	9.6	-			1.80 (.82)
GD410*	SS FLEX		16.9	9.6	2.0			1.20 (.54)
GD470*	SEMI-FLEX		17.8	9.6	1.9			1.40 (.64)
GD451*	CLEVIS	336.4 (18/1) ACSR 394.5 AAAC 397.5 AAC(1)	18.9	10.5	-	.659-.724 (16.74-18.39)	GREEN	2.0 (.90)
GD411Z*	SS Z		20.8	10.5	-			2.10 (.95)
GD411*	SS FLEX		17.7	10.5	2.0			1.80 (.82)
GD471*	SEMI-FLEX		18.6	10.5	1.9			1.70 (.77)
-	CLEVIS	397.5 (18/1) ACSR 465.4 AAAC 477 AAC (1)	-	-	-	.722-.795 (18.34-20.19)	BLUE	-
GD412Z*	SS Z		19.6	11.3	-			2.40 (1.08)
GD412*	SS FLEX		19.0	11.3	2.0			2.00 (.91)
GD472*	SEMI-FLEX		19.3	11.3	1.9			2.00 (.91)

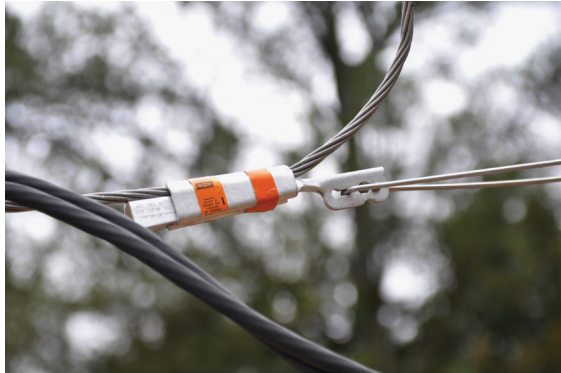
\*Maximum design rating 10,000 Lb./4535 kg.  
 \*\*RUS Listed  
 (1) Includes compact conductor of each size  
 (2) For neoprene covered bail add suffix "N" Ex. GD406AN.



# DEADENDS AUTOMATIC WEDGE SERVICE ENTRANCE/DROP ALUMINUM

DA  
4

ALUMINUM
SW

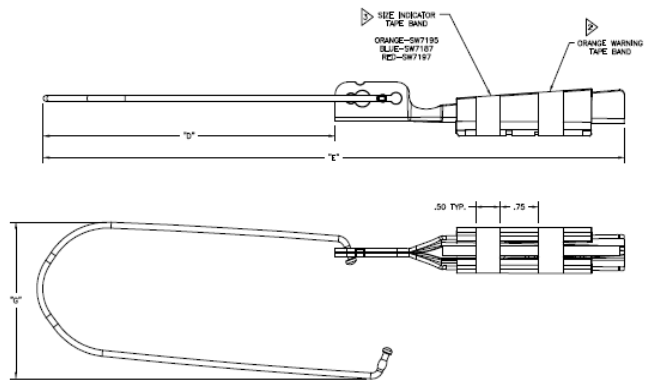


- For deadending and stress relief of service entrance/drop installations.
- For use with ACSR, AAC, & AAAC conductors.
- Service wedge to be attached to bare neutral.
- Rigid stainless steel bails are for use with eye hooks and insulators with diameters larger than 1.5" in diameter.
- Flexible bails are for use with hooks and small eyes.
- Design allows for easy sag adjustments.
- Service wedges are not full tension devices (see tensile rating). May be used in slack span applications.†
- Each wedge has two tape bands.
- The warning label is always orange (outside band).
- The size indicator is color coded as listed below (inside band, closest to bail).
- Locking mechanism secures latch on the rigid bail to prevent opening during installation.



Gripping unit gentle on conductor

**Material:** **Body and Keeper** - Aluminum Alloy  
**Bail** - Solid: Stainless Steel  
 Flex: Covered Stainless Wire Braid (FL Suffix)



## Product Data & Conductor Size

CATALOG NUMBER	DESCRIPTION	CONDUCTOR SIZE			DIA RANGE IN (MM)	DIMENSIONS			MECH. STR. LBS. (kN)	SIZE INDICATOR COLOR
		ACSR	AAC	AAAC		A	B	C		
SW7195LB	WEDGE w/RIGID SS BAIL	#6 - #2	#6 sol - #1 str	#6 -#2	.160 - .332 (4.1-8.4)	6 (150)	12 (300)	2-1/2 (64)	1000 (4.45) 800 max for #6 ACSR	Orange
SW7195FL	WEDGE w/FLEXIBLE BAIL					10-1/4 (260)	16-1/8 (410)	Flex		
SW7187LB	WEDGE w/RIGID SS BAIL	#4 - 1/0	#2 sol - 2.0 str	#4 - 1/0	.248 - .414 (6.3-10.5)	5 - 7/8 (145)	12 - 1/4 (310)	2 - 1/2 (64)	1200 (5.34) 900 max for #4 ACSR	Blue
SW7187FL	WEDGE w/FLEXIBLE BAIL					10 - 1/2 (265)	17 (430)	Flex		
SW7197LB*	WEDGE w/RIGID SS BAIL	2/0 - 4/0	2/0 - 4/0	2/0 - 4/0	.414 - .565 (6.3-14.4)	5 - 3/4 (145)	13 (325)	2 - 3/4 (69)	1600 (7.12)	Red
SW7197FL*	WEDGE w/FLEXIBLE BAIL					10 - 1/8 (255)	17 - 1/4 (435)	Flex		

Add "I" for anodized version  
 \*Can also be used with 1/0 (6/1) ACSR to 1600 lb max  
 †Slack span is defined as weight of conductor only.



# DEADENDS AUTOMATIC OVERHEAD SIDE-OPENING WEDGE ALUMINUM

ALUMINUM
GDW

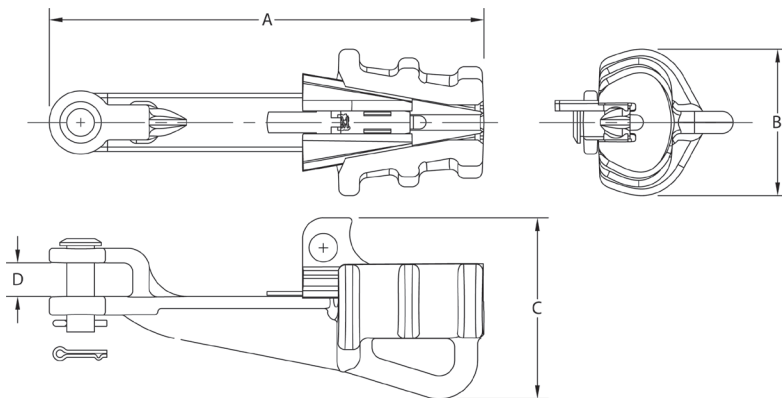
DA  
5

- Fastest method of deadending ACSR, AAAC, and AAC conductor
- Accepts wide range of conductor sizes. High Strength Aluminum alloy body and jaws
- Requires no wrenches or special tools
- Can be repositioned on conductor during installation
- Rotated clevis eases placement of conductor
- Plated jaws available to accommodate copper conductors



**Note:** For plated jaws remove "A" suffix.  
Example GDW556  
All bolted deadends are rated 40% of RBS - Partial tension per ANSI C119.4"  
For conductor sizes not shown in catalog, consult factory

**Material:** **Body and Jaws** - High Strength Aluminum Alloy  
**Clevis Pin** - Galvanized Steel  
**Cotter Pin** - Stainless Steel



## Product Data & Conductor Size

CATALOG NUMBER	CONDUCTOR RANGE		DECIMAL RANGE INCHES (MM)		ULTIMATE STRENGTH LBS. (kN)		DIMENSIONS INCHES (MM)			
	MINIMUM	MAXIMUM	MINIMUM	MAXIMUM	BODY	SAG EYE	A	B	C	D
GDW420A *GDW420	#4 str AAC #4 AAAC #4 ACSR #4 str CU	2/0 str AAC 2/0 AAAC 2/0 ACSR 2/0 str CU	.23 (5.8)	.45 (11.4)	6,000 (26.69)	4,000 (17.79)	9.45 (240.1)	296 (75.1)	3.97 (100.8)	0.75 (19.2)
GDW440A *GDW440	#4 str AAC #4 AAAC #4 ACSR #4 str CU	4/0 str AAC 4/0 AAAC 4/0 ACSR 3/0 str CU	.23 (5.8)	.57 (14.5)	9,000 (40.03)	6,000 (26.69)	9.84 (249.8)	3.31 (84)	4.08 (103.6)	0.76 (19.2)
GDW556A** *GDW556**	4/0 AAC 4/0 AAAC 4/0 ACSR 4/0 str CU	600 AAC 559.5 AAAC 556.5 ACSR 600 str CU	.52 in (13.2 mm)	.90 in (22.8 mm)	10,000 (44.48)	6,000 (26.69)	16.2 (335.3)	5.67 (144)	5.25 (133.4)	0.81 (20.6)
GDW795A GDW795	4/0 AAC 4/0 ACSR 4/0 AAAC 250 str CU	900 AAC 927.2 AAAC 795 ACSR 900 str CU	.52 in (13.2 mm)	1.11 in (28.1 mm)	15,000 (66.72)	6,000 (26.69)	20.2 (513)	5.90 (150)	5.78 (146.8)	0.71 (18)

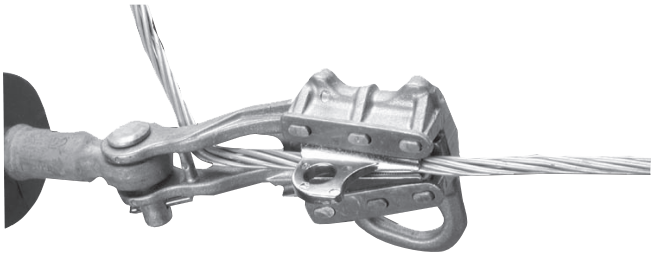
\* Plated aluminum jaws provided to accommodate copper conductors.  
\*\* RUS Listed



DA  
6

ALUMINUM  
GDW2000

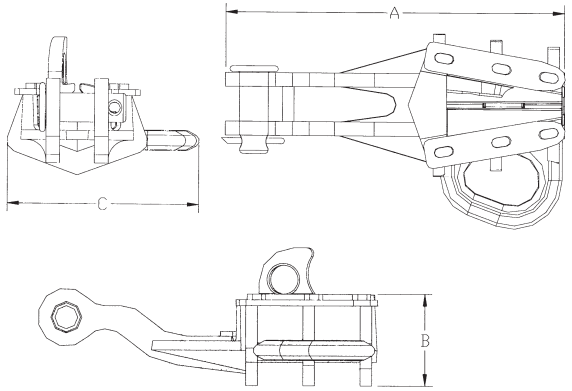
# DEADENDS AUTOMATIC OVERHEAD SIDE-OPENING WEDGE ALUMINUM GDW2000 SERIES



- Redesigned GDW2000 Series
- Fastest method of deadending ACSR, AAAC and AAC conductor
- Accepts wide range of conductor sizes. High Strength Aluminum alloy body and jaws
- Requires no wrenches or special tools
- Can be repositioned on conductor during installation
- Plated jaws available to accommodate copper conductors

**Note:** For plated jaws remove "A" suffix.  
Example GDW556  
All bolted deadends are rated 40% of RBS - Partial tension per ANSI C119.4"  
For conductor sizes not shown in catalog, consult factory

**Material:** **Body and Jaws** - High Strength Aluminum Alloy  
**Clevis Pin** - Galvanized Steel  
**Cotter Pin** - Stainless Steel



## Product Data & Conductor Size

CATALOG NUMBER	CONDUCTOR RANGE		DECIMAL RANGE INCHES (MM)		ULTIMATE STRENGTH LBS. (kN)		DIMENSIONS INCHES (MM)			APPROX. WEIGHT EA. LBS (KG)
	MINIMUM	MAXIMUM	MINIMUM	MAXIMUM	BODY	SAG EYE	A	B	C	
GDW2010A** *GDW2010**	#4 str AAC	2/0 str AAC								
	#4 AAAC	2/0 AAAC	.23	.45	6,000	4,000	7.5	2.0	4.5	1.5
	#4 ACSR	2/0 ACSR	(5.8)	(11.4)	(26.69)	(17.79)	(190.5)	(50.8)	(114.3)	(.07)
	#4 str CU	2/0 str CU								
GDW2040A** *GDW2040**	#4 str AAC	4/0 str AAC								
	#4 AAAC	4/0 AAAC	.23	.57	8,000	6,000	8.0	2.0	4.9	2.0
	#4 ACSR	4/0 ACSR	(5.8)	(14.5)	(35.59)	(26.69)	(203.2)	(50.8)	(124.5)	(0.9)
	#4 str CU	3/0 str CU								

\* Plated aluminum jaws provided to accommodate copper conductors.  
\*\* RUS Listed





# DEADENDS AUTOMATIC GUY WIRE

ALUMINUM
GDE5100

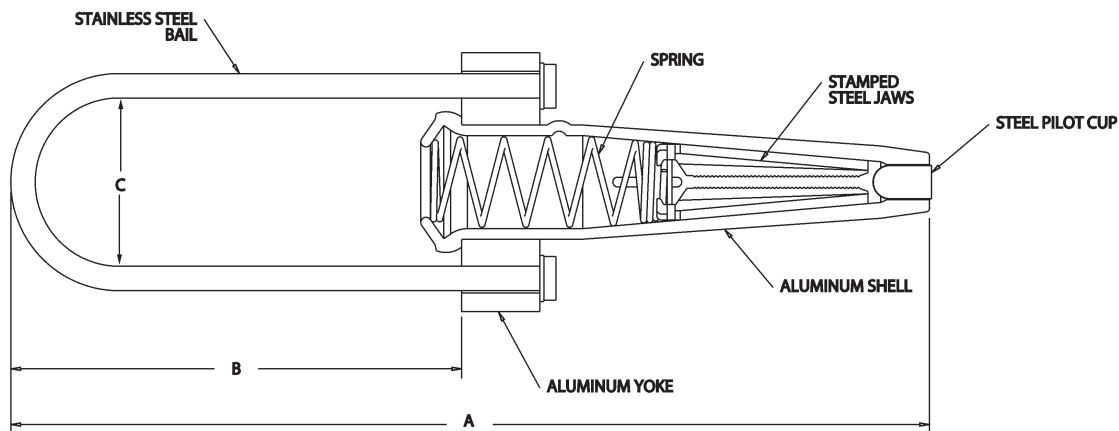
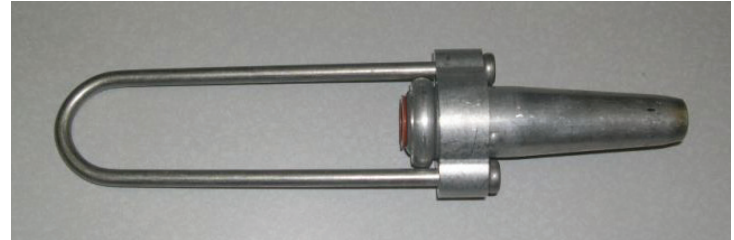
DA  
7

Fargo GDE5100 Series Automatic deadends are designed for use on High Strength, Common, Siemens-Martin, Utilities and Bell System Strand.

**Rating:** 90% of conductor breaking strength

**Note:** Consult factory for information on other applications.

**Material:** **Gripping Unit** – Stainless Steel  
**Yoke** – Aluminum Alloy  
**Bail** – Stainless Steel



## Product Data & Conductor Size

CATALOG NUMBER	PRIMARY STRAND APPLICATION	TO BE USED WITH:			RANGE IN. (MM)	DIMENSIONS IN. (MM)		
		EHS	AW/AWAC	HS, COM, S-M, UTIL, BELL		A	B	C
GDE5100	1/4" HS, Com, S-M, Util, Bell			•	0.240-0.253 (6.11-6.44)	9.2 (234)	5.7 (145)	1.4 (36)
GDE5100L	1/4" HS, Com, S-M, Util, Bell			•	0.240-0.253 (6.11-6.44)	12.7 (234)	9.2 (234)	1.4 (36)
GDE5101	5/16" HS, Com, S-M, Util, Bell			•	0.310-0.335 (7.89-8.53)	9.3 (236)	5.6 (142)	1.5 (38)
GDE5101L	5/16" HS, Com, S-M, Util, Bell			•	0.310-0.335 (7.89-8.53)	13.1 (333)	9.5 (241)	1.5 (38)
GDE5102	3/8" HS, Com, S-M, Util, Bell			•	0.360-0.405 (9.16-10.31)	11.5 (292)	7.1 (180)	2.0 (51)
GDE5102L	3/8" HS, Com, S-M, Util, Bell			•	0.360-0.405 (9.16-10.31)	16.5 (419)	12.0 (305)	2.0 (51)

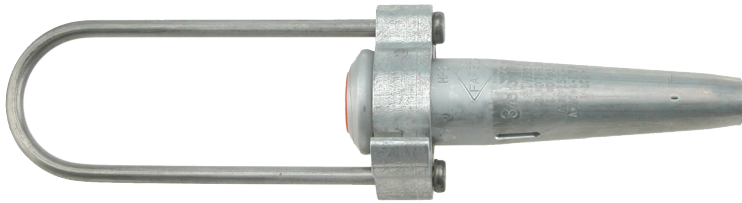
NOTE: Suffix "L" Denotes Extended Bail.



# DEADENDS AUTOMATIC GUY WIRE

DA  
8

ALUMINUM  
GDE5200



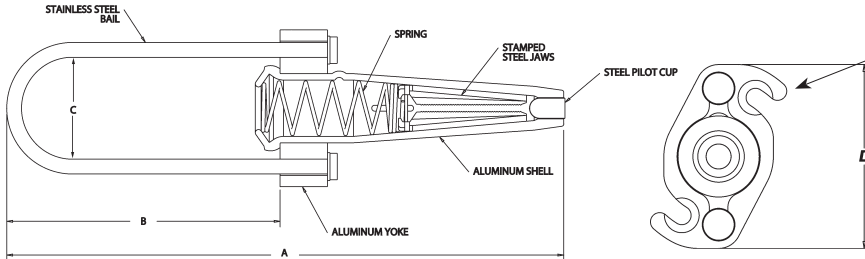
Fargo GDE5200 Series Automatic deadends are designed for use on all grades of galvanized steel wire strand ... High Strength, Extra High Strength, Alumoweld®, Aluminized, Common, Siemens-Martin, Utilities and Bell System Strand.

**Rating:** 90% of conductor breaking strength

**INNOVATIVE YOKE DESIGN ALLOWS FOR INSTALLATION WITHOUT USE OF A GRIPPING HOOK.**

**Note:** Consult factory for information on other applications.

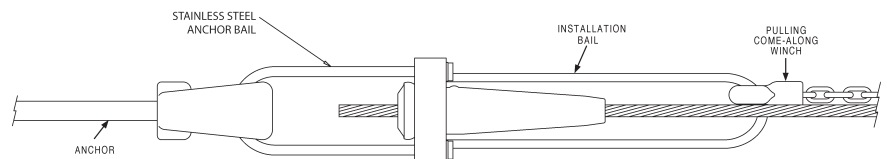
**Material:** Gripping Unit - Stainless Steel



## Product Data & Conductor Size

CATALOG NUMBER	PRIMARY STRAND APPLICATION	TO BE USED WITH:			RANGE IN. (MM)	DIMENSIONS IN. (MM)			
		EHS	AW/AWAC	HS, COM, S-M, UTIL, BELL		A	B	C	D
GDE5199	3/16" EHS (2.8M3) AW	•	•	•	0.145-0.215 (3.68-5.46)	10.0 (254)	5.7 (145)	1.6 (41)	2.7 (69)
GDE5200	1/4" EHS 7#12 (6M) AW	•	•	•	0.215-0.270 (5.46-6.86)	10.2 (259)	5.7 (145)	1.6 (41)	2.7 (69)
GDE5200L	1/4" EHS 7#12 (6M) AW	•	•	•	0.215-0.270 (5.46-6.86)	13.9 (353)	9.4 (239)	1.6 (41)	2.7 (69)
GDE5201	5/16" EHS 7#10 (10M), 7#11 (8M) AW	•	•	•	0.270-0.315 (6.86-8.00)	10.3 (262)	5.5 (140)	1.8 (46)	2.8 (71)
GDE5201L	5/16" EHS 7#10 (10M), 7#11 (8M) AW	•	•	•	0.270-0.315 (6.86-8.00)	15.6 (396)	10.8 (274)	1.8 (46)	2.8 (71)
GDE5202	3/8" EHS 3#5, 7#8, 7#9, 12.5M, 14M, 16M AW #4-2/5, #2-3/4, #1-5/2 AWAC®	•	•	•	0.325-0.392 (8.26-9.96)	13.0 (330)	7.1 (180)	2.1 (53)	3.5 (89)
GDE5202L	3/8" EHS 3#5, 7#8, 7#9, 12.5M, 14M, 16M AW #4-2/5, #2-3/4, #1-5/2 AWAC®	•	•	•	0.325-0.392 (8.26-9.96)	16.8 (427)	11.0 (279)	2.1 (53)	3.5 (89)
GDE5203	7/16" EHS 7#7 (20M), 18M AW #2-2/5, #1-3/4, #1/0-5/2 AWAC®	•	•	•	0.392-0.458 (9.96-11.63)	15.0 (381)	8.2 (208)	2.1 (53)	3.5 (89)
GDE5203L	7/16" EHS 7#7 (20M), 18M AW #2-2/5, #1-3/4, #1/0-5/2 AWAC®	•	•	•	0.392-0.458 (9.96-11.63)	18.7 (475)	12.3 (312)	2.1 (53)	3.8 (97)
GDE5204	1/2" EHS EHS, 25M AW #1-2/5, 1/0-3/4, #2/0-5/2 AWAC, #2/0-4/3 AWAC	•	•	•	0.455-0.520 (11.56-13.21)	16.0 (406)	10.3 (262)	2.1 (53)	4.1 (104)
GDE5204L	1/2" EHS EHS, 25M AW #1-2/5, 1/0-3/4, #2/0-5/2 AWAC, #2/0-4/3 AWAC	•	•	•	0.455-0.520 (11.56-13.21)	20.1 (511)	14.5 (368)	2.1 (53)	4.1 (104)

INSTALLATION BAIL	PART NO.
Bail for GDE5199	PS3005200
Bail for GDE5200 / GDE5200L	PS3005200
Bail for GDE5201 / GDE5201L	PS3005521
Bail for GDE5202 / GDE5202L	3005152
Bail for GDE5203 / GDE5203L	3005527
Bail for GDE5204 / GDE5204L	PS3005524



Typical Installation with 2nd Bail

Notes: Suffix "L" denotes extended bail.  
Alumoweld® is a registered trademark of the United States Alumoweld Company, LLC (AFL).  
AWAC® is a registered trademark of Fushi Copperweld Inc.



# DEADENDS BOLTED STRAIGHT-LINE SPRING-LOADED - SIDE OPENING ALUMINUM

ALUMINUM  
ASOD

For distribution and light transmission construction with AAC, AAAC and ACSR conductors. The vertical spring-loaded keeper provides the easiest installation of any current bolted strain clamp.

- Material:** **Body and Keeper** - 356-T6 Aluminum Alloy  
**Hardware** - Galvanized Steel  
**Sockets and Clevises** - Ductile Iron, Galvanized  
**Spring and Cotter Pin** - Stainless Steel

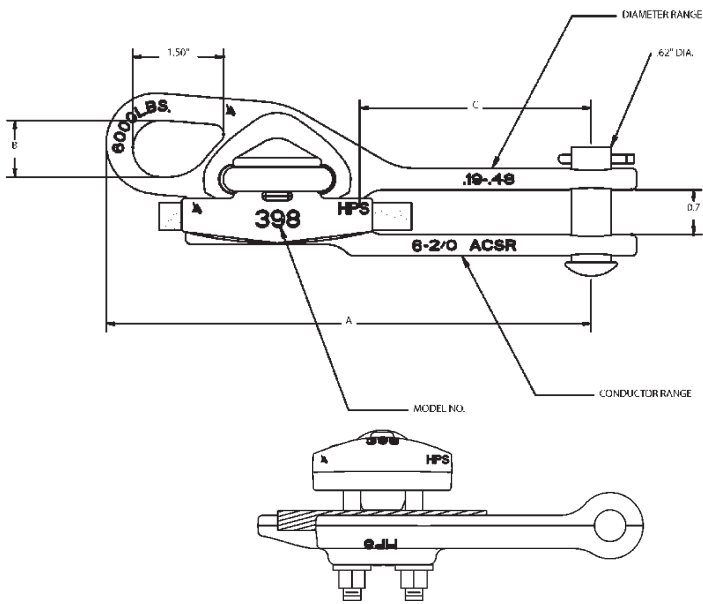
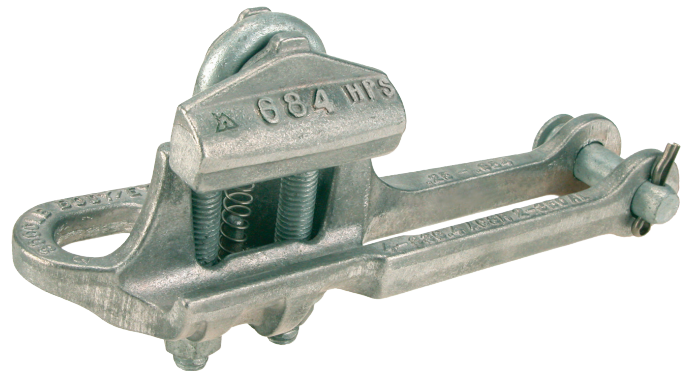


Fig. 1

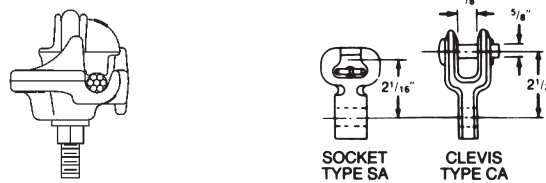


Fig. 2

## Product Data & Conductor Size

CATALOG NUMBER	U-BOLTS		CLAMPING RANGE						ULT. STR. LBS. (kN)		DIMENSIONS IN INCHES		
	NO.	SIZE	ACSR		ALUMINUM		INCHES		BODY	SAG EYE	A	B	C
			MIN.	MAX.	MIN.	MAX.	MIN.	MAX.					
ASOD398IN	1	3/8	#6 (6/1)	2/0 (6/1)	#4 (7)	2/0 (19)	0.19	0.48	6000 (26.69)	6000 (26.69)	8.00	1.00	3.62
ASOD570IN	1	1/2	#6 (6/1)	4/0 (6/1)	#4 (7)	4/0 (19)	0.19	0.57	8000 (35.59)	8000 (35.59)	8.62	1.00	3.75
ASOD684IN	1	1/2	#4 (6/1)	336.4 (18/1)	#2 (7)	350 (37)	0.25	0.69	8000 (35.59)	8000 (35.59)	9.00	1.00	4.50
ASOD858IN	1	1/2	#4 (6/1)	556.5 (18/1)	#2 (7)	556.5 (37)	0.25	0.89	8000 (35.59)	8000 (35.59)	9.62	1.00	4.75
ASOD8582N	2	1/2	3/0 (6/1)	556.5 (18/1)	4/0 (7)	556.5 (37)	0.50	0.89	12000 (53.38)	9000 (4003)	14.50	1.00	6.00
ASOD11602N	2	1/2	336.4 (18/1)	900 (54/7)	350 (37)	954 (61)	0.69	1.16	12000 (53.38)	9000 (4003)	16.75	1.50	7.75
ASOD12592N	2	1/2	336.4 (18/1)	1113 (45/7)	336.4 (19 STR)	1200 (91 STR)	0.666	1.263	15000 (66.72)	11250 (500.4)	16.56	1.5	6.9

NOTES: (1) Recommended torque on U-bolts: 3/8"-25 lb.-ft., 1/2"-45 lb.-ft.  
(2) Add Suffix "C" for Clevis Fitting (Type CA)  
(3) Add Suffix "S" for Socket Eye Fitting (Type SA)

(4) All bolted deadends are rated 40% of RBS - Partial tension per ANSI C119.4"  
(5) For conductor sizes not shown in catalog, consult factory



DA  
10

ALUMINUM  
ADSB

# DEADENDS SINGLE BOLT STRAIGHT-LINE SPRING-LOADED - SIDE-OPENING BOLTED QUADRANT STRAIN CLAMP ALUMINUM

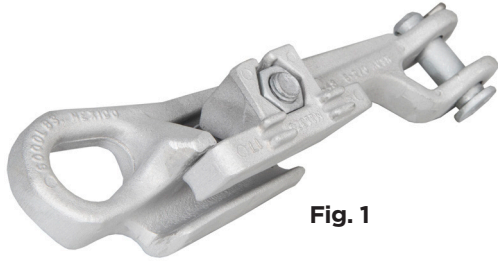


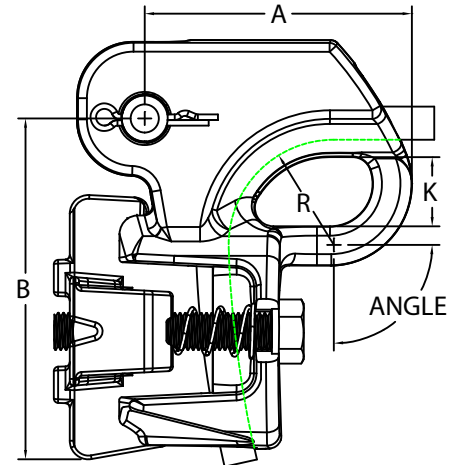
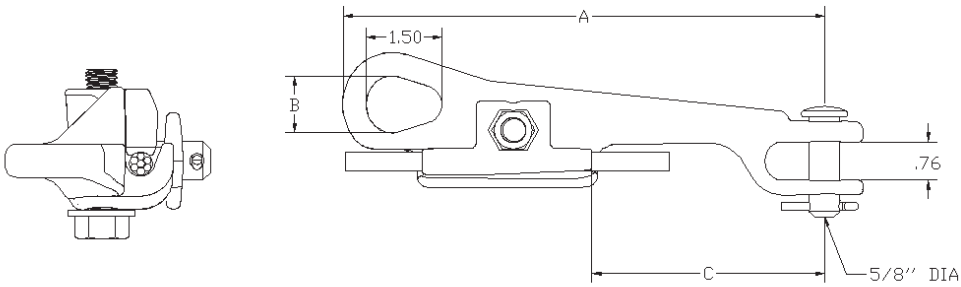
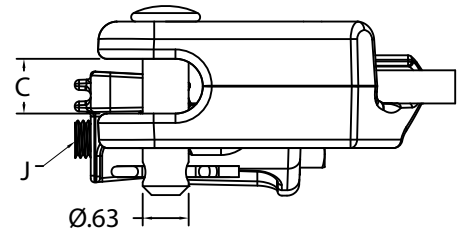
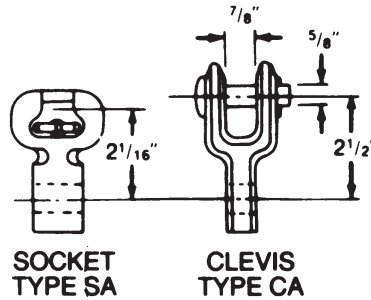
Fig. 1

- For distribution construction using ACSR, AAC, and AAAC conductors
- Side loading conductor groove, in both a quadrant and straight line design, makes installation quicker than conventional side loading u-bolt style clamps
- Spring-loaded design holds keeper out of the way for easy conductor installation
- High strength 1/2" bolt, allows for quick installation with hand, battery pack, or hydraulic tools
- ANSI C119.4 Class 1A, normal tension connector (60% of rated conductor strength)

**Material:** **Body and Keeper** - High Strength Aluminum Alloy  
**Hardware** - Galvanized Steel  
**Spring and Cotter Pin** - Stainless Steel



Fig. 2



## Product Data & Conductor Size

CATALOG NUMBER	FIG. NO.	BOLTS		CLAMPING RANGE			ULT. STR. LBS. (KN)		DIMENSIONS IN INCHES (MM)				RECOMMENDED TORQUE	WRENCH FLAT
		NO.	SIZE	ACSR	ALUMI-NUM	INCHES (MM)	BODY	SAG EYE	A	B	C	K		
ADSB48N*	1	1	1/2	#6 (6/1)	#4 (7 STR)	0.19 - 0.48 (4.8 - 12.2)	6000 (26.69)	6000 (26.69)	9.6 (244)	1.13 (29)	4.63 (118)	N/A	45 LB-F (61 Nm)	3/4" (19mm)
SLQ48N	2			To 2/0 (6/1)	To 2/0 (19 STR)		8000 (35.59)	6000 (26.69)	3.65 (93)	4.62 (117)	0.75 (19)	0.95 (24)		

NOTES: For Socket or Clevis fitting replace the "N" suffix with "S" or "C"  
 \* For optional stainless steel lifting eye, add "E" to catalog number

# DEADENDS BOLTED STRAIGHT LINE SPRING-LOADED - SIDE-OPENING ALUMINUM

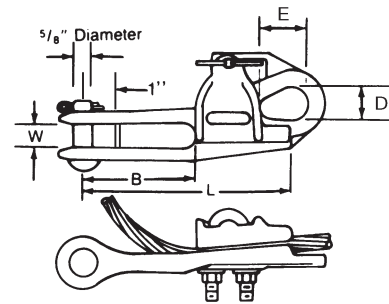
ALUMINUM  
ADEZ/ADSO

For distribution and light transmission construction with all aluminum, ACSR or aluminum alloy conductor. The spring loaded keeper permits easy conductor insertion and lower installation cost.

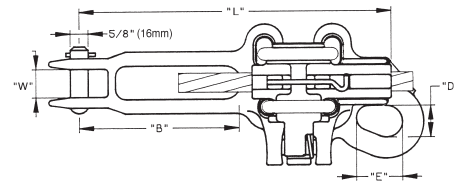
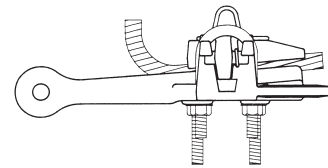
Captive nuts prevent disassembly and loss of hardware during installation on energized or de-energized lines.

The pivotal keeper design avoids friction between body and keeper during installation.

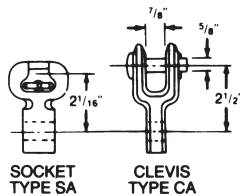
**Material:** **Body and Keeper** - 356-T6 Aluminum Alloy  
**Hardware** - Galvanized Steel  
**Sockets and Clevises** - Ductile Iron, Galvanized  
**Spring and Cotter Pin** - Stainless Steel



ONE "U" BOLT  
ADSO



TWO "U" BOLTS  
ADEZ



## Product Data & Conductor Size

CATA-LOG NUMBER	FITTING		CLAMPING RANGE			ULTIMATE BODY STRENGTH LBS. (KN)	U-BOLTS		DIMENSIONS INCHES (MM)					APPROX. WT. EACH LBS. (KG)
	TYPE	CAT. NO.	ACSR	ALUMI-NUM	INCHES (MM)		NO.	SIZE INCHES (MM)	L	B	W	D	E	
ADSO46N	None	-	#6 (6/1)	#4 (7)	.18-.46	7,000	1	3/8	6-5/8	3-5/8	3/4	1	1-1/2	1.2 (.54)
ADSO46S	Socket	SA04	To	To	(4.57-11.68)	(31.14)	1	3/8	(168.28)	(92.08)	(19.05)	(25.40)	(38.10)	2.4 (1.09)
ADSO46C	Clevis	CA04	2/0 (6/1)	3/0 (7)										2.8 (1.27)
ADEZ47N	None	-	#6 (6/1)	#4 (7)	.18-.47	7,000	2	3/8	6-1/2	3-1/4	3/4	1	1-5/16	1.3 (.59)
ADEZ47S	Socket	SA04	To	To	(4.57-11.94)	(31.14)	2	3/8	(165.10)	(82.55)	(19.05)	(25.40)	(45.64)	2.5 (1.13)
ADEZ47C	Clevis	CA04	2/0 (6/1)	3/0 (7)										2.9 (1.32)
ADEZ70N	None	-	#4 (6/1)	#4 (7)	.31-.70	9,000	2	3/8	8-1/4	4-15/16	15/16	1-1/8	1-5/8	1.6 (.73)
ADEZ70S	Socket	SA06	To	To	(7.87-17.78)	(40.03)	2	3/8	(209.55)	(107.55)	(23.81)	(28.58)	(41.28)	3.0 (1.36)
ADEZ70C	Clevis	CA06	336.4 (18/1)	350 (19)										3.1 (1.41)
ADEZ88N	None	-	2/0 (6/1)	3/0 (7)	.44-.88	10,000	2	1/2	9-5/16	4-23/32	15/16	1-1/8	1-5/8	3.0 (1.36)
ADEZ88S	Socket	SA06	To	To	(11.18-22.35)	(44.48)	2	1/2	(236.54)	(119.86)	(23.81)	(25.58)	(41.28)	4.3 (1.95)
ADEZ88C	Clevis	CA06	556 (18/1)	556 (37)										4.7 (2.13)
ADEZ116N	None	-	336.4 (18/1)	350 (37)	.68-1.16	12,000	2	1/2	10-13/16	5-3/8	1	1-1/8	1-5/8	3.7 (1.68)
ADEZ116S	Socket	SA06	To	To	(17.27-29.46)	(53.38)	2	1/2	(274.64)	(136.53)	(25.40)	(25.58)	(41.28)	5.0 (2.27)
ADEZ116C	Clevis	CA06	954 (36/1)	1000 (61)										5.4 (2.45)

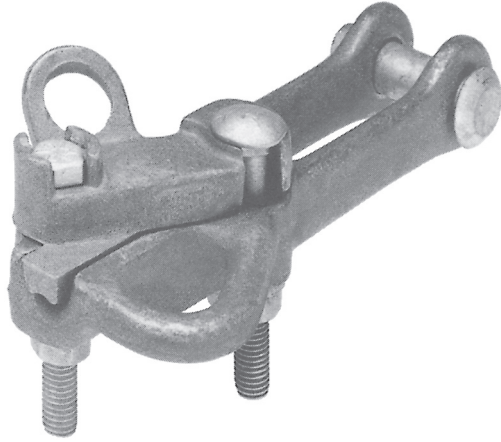
NOTES: (1) Recommended Torque on bolts: 3/8"—240 in. lbs., 1/2"—480 in. lbs.  
(2) For optional stainless steel lifting eye, add "E" to catalog number.  
Example: ADSO46EN

(3) All bolted deadends are rated 40% of RBS - Partial tension per ANSI C119.4"  
(4) For conductor sizes not shown in catalog, consult factory



# DEADENDS BOLTED STRAIGHT LINE DEADEND STRAIN CLAMP SWING AWAY ALUMINUM

ALUMINUM  
GD900



For distribution and light transmission construction. The angle beam pressure pad effectively converts torque to maximum pressure and spreads this force over the total contact area.

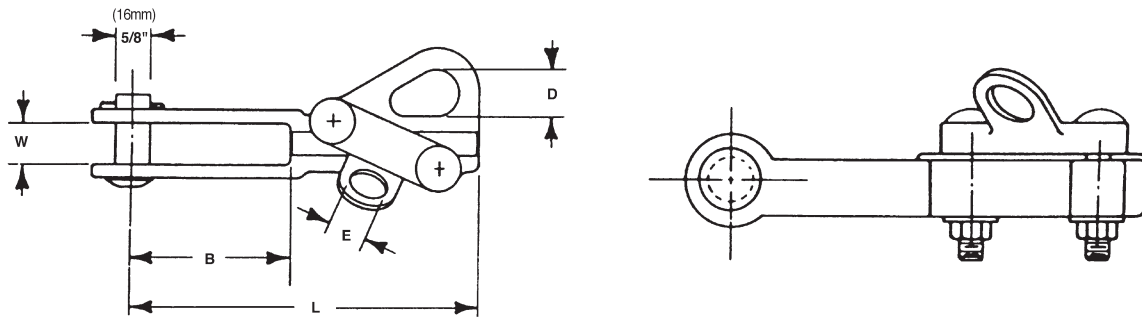
The compressive forces are combined with the modified parabolic "V" groove of the body to provide maximum conductor encirclement and increased holding ability.

The large pulling eye makes it convenient to connect and disconnect the "come-along" hook.

### SWING AWAY DESIGN

The pressure pad is easily lifted and swung clear of the cable groove permitting convenient top loading of the conductor without disassembly.

**Material:** **Body and Keeper** - 356-T6 Aluminum Alloy  
**Hardware** - Galvanized Steel  
**Cotter Pin** - #302 Stainless Steel



## Product Data & Conductor Size

CATALOG NUMBER	CLAMPING RANGE			ULTIMATE BODY STRENGTH LBS. (kN)	BOLT SIZE INCHES (MM)	DIMENSIONS INCHES (MM)					APPROX. WT. EACH LBS. (KG)
	ACSR	ALUMINUM	INCHES (MM)			L	B	W	D	E	
GD961A**	#6 (6/1) To 2/0 (6/1)	#6 (7) to 3/0 (7)	.18-.47 (4.57-11.94)	7,000 (31.14)	3/8 (9.53)	6-5/8 (168.4)	3 (76.2)	3/4 (19.05)	7/8 (22.22)	-	1.1 (0.5)
GD963A	#4 (6/1) to 397.5 (30/7)	#4 (7) to 477 (37)	.25-.81 (6.35-20.57)	10,000 (44.48)	1/2 (12.70)	10 (254)	5 (127)	3/4 (19.05)	1 25.4	7/8 (22.22)	2.0 (0.9)
GD965A	3/0 (6/1) to 556.5 (18/1)	4/0 (7) to 556.5 (37)	.50-.88 (12.7-22.35)	10,000 (44.48)	1/2 (12.70)	10-1/8 (257.17)	5-1/4 (133.35)	3/4 (19.05)	1 25.4	7/8 (22.22)	3.3 (1.5)
GD967A	300 (26/7) to 954 (36/1)	336.4 (19) to 954 (61)	.68-1.15 (17.27-29.21)	10,000 (44.48)	1/2 (12.70)	16-1/2 (419.1)	10 (254)	1-1/4 (31.75)	1-1/8 25.58	7/8 (22.22)	3.8 (1.7)

NOTE: (1) Recommended Torque on bolts: 3/8"—240 in. lbs., 1/2"—480 in. lbs.  
(2) All bolted deadends are rated 40% of RBS - Partial tension per ANSI C119.4"  
(3) For conductor sizes not shown in catalog, consult factory

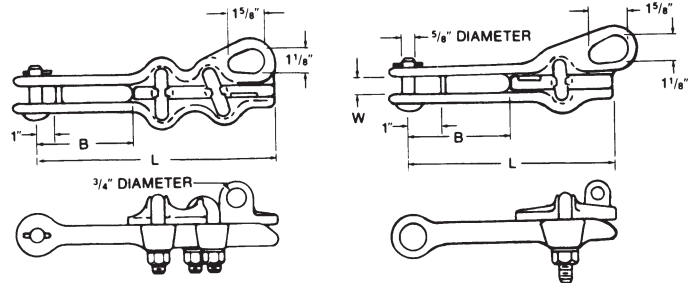
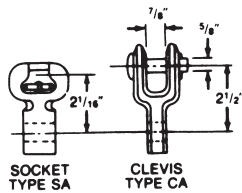
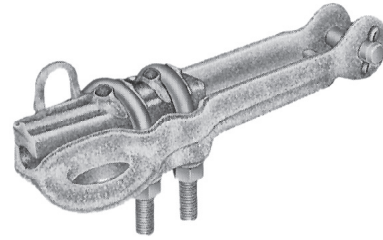
\*\* RUS Listed.

# DEADENDS BOLTED STRAIGHT LINE STRAIN CLAMP ALUMINUM

ALUMINUM
ADS

For distribution and light transmission construction with all aluminum, ACSR or aluminum alloy conductor. These clamps have high holding power and large range taking ability. (Straight Contoured Groove)

**Material:** **Body and Keeper** - 356-T6 Aluminum Alloy  
**Hardware** - Galvanized Steel  
**Sockets and Clevises** - Ductile Iron, Galvanized  
**Cotter Pin** - #302 Stainless Steel



## Product Data & Conductor Size

CATALOG NUMBER	FITTING		CLAMPING RANGE			ULTIMATE BODY STRENGTH LBS. (kN)	U-BOLTS		DIMENSIONS INCHES (MM)			APPROX. WT. EACH LBS. (KG)
	TYPE	CAT. NO.	ACSR	ALUMINUM	INCHES (MM)		NO.	SIZE INCHES (MM)	L	B	W	
ADS47N	None	-	#6 (6/1)	#6-7 Str.	.18-.47	7,000 (31.14)	1	1/2 (12.70)	5-3/8 (136.52)	2-1/8 (53.98)	11/16 (17.46)	1.1 (.50)
ADS47S	Socket	SA04	To	To	(4.57-11.94)							2.4 (1.09)
ADS47C	Clevis	CA04	2/0 (6/1)	3/0-19 Str.								2.7 (1.22)
*ADS47LN	None	-	#6 (6/1)	#6-7 Str.	.18-.47	7,000 (31.14)	1	1/2 (12.70)	6-3/4 (171.45)	3-1/2 (88.90)	11/16 (17.46)	1.3 (.59)
*ADS47LS	Socket	SA04	To	To	(4.57-11.94)							2.6 (1.15)
*ADS47LC	Clevis	CA04	2/0 (6/1)	3/0-19 Str.								2.9 (1.32)
ADS48N**	None	-	#6 (6/1)	#6-7 Str.	.18-.502	7,000 (31.14)	2	3/8 (9.53)	7-5/8 (190.50)	3-7/8 (98.43)	11/16 (17.46)	1.6 (.73)
ADS48S	Socket	SA04	To	To	(4.57-12.75)							2.9 (1.32)
ADS48C	Clevis	CA04	3/0 (6/1)	3/0-19 Str.								3.2 (1.46)
ADS60N**	None	-	#6 (6/1)	#4-7 Str.	.19-.60	8,000 (35.59)	2	1/2 (12.70)	8-1/4 (209.55)	4 (101.60)	3/4 (19.05)	2.0 (.91)
ADS60S	Socket	SA04	To	To	(4.83-15.24)							3.2 (1.45)
ADS60C	Clevis	CA04	266.8 (18/1)	266.8-19 Str.								3.6 (1.63)
*ADS60LN	None	-	#6 (6/1)	#4-7 Str.	.19-.60	8,000 (35.59)	2	1/2 (12.70)	10-5/8 (269.88)	6 (152.40)	3/4 (19.05)	2.2 (1.00)
*ADS60LS	Socket	SA04	To	To	(4.83-15.24)							3.4 (1.54)
*ADS60LC	Clevis	CA04	266.8 (18/1)	266.8-19 Str.								3.8 (1.72)
ADS88N	None	-	#2 (6/1)	#1-7 Str.	.31-.88	10,000 (44.48)	2	1/2 (12.70)	9 (228.60)	4-1/2 (114.30)	15/16 (23.81)	2.2 (1.00)
ADS88S	Socket	SA06	To	To	(7.87-22.35)							3.5 (1.59)
ADS88C	Clevis	CA06	556.5 (18/1)	556.5-37 Str.								3.9 (1.77)
*ADS88LN	None	-	#2 (6/1)	#1-7 Str.	.31-.88	10,000 (44.48)	2	1/2 (12.70)	12 (304.80)	7-1/2 (190.50)	15/16 (23.81)	2.4 (1.09)
*ADS88LS	Socket	SA06	To	To	(7.87-22.35)							3.7 (1.68)
*ADS88LC	Clevis	CA06	556.5 (18/1)	556.5-37 Str.								4.1 (1.86)
ADS116N	None	-	#2 (6/1)	#1-7 Str.	.31-1.16	15,000 (66.72)	2	1/2 (12.70)	10-1/2 (266.70)	5-1/2 (139.70)	1 (25.40)	2.9 (1.32)
ADS116S	Socket	SA07	To	To	(7.87-29.46)							4.2 (1.91)
ADS116C	Clevis	CA06	954 (36/1)	1000-61 Str.								4.6 (2.09)
ADS130N	None	-	266.8 (26/7)	336.4-19 Str.	.64-1.30	15,000 (66.72)	2	1/2 (12.70)	10-1/2 (266.70)	5-1/2 (139.70)	1 (25.40)	3.0 (1.36)
ADS130S	Socket	SA07	To	To	(16.26-33.02)							4.3 (1.95)
ADS130C	Clevis	CA06	1192.5 (45/7)	1272-61 Str.								4.7 (2.13)
ADS155N	None	-	336.4 (26/7)	397.5-19 Str.	.72-1.55	15,000 (66.72)	2	5/8 (15.9)	11-3/4 (298.5)	6 (152.4)	1 (25.40)	4.4 (2.0)
ADS155S	Socket	SA07	To	To	(18.3-39.9)							5.8 (2.6)
ADS155C	Clevis	CA06	1590.5 (54/19)	1800-127 Str.								6.1 (2.8)

NOTES: (1) Recommended Torque on bolts: 3/8"—240 in. lbs., 1/2"—480 in. lbs., 5/8"—720 in.-lbs. \*Extra length clamps for greater insulator clearance.  
 (2) Lifting eye is standard on keeper for hot line work. \*\* RUS Listed.  
 (3) All bolted deadends are rated 40% of RBS - Partial tension per ANSI C119.4"  
 (4) For conductor sizes not shown in catalog, consult factory

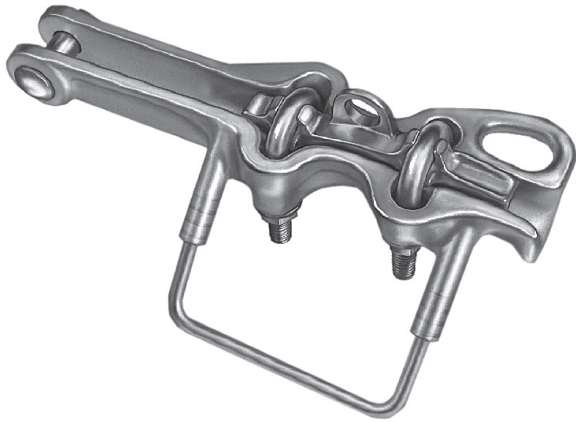




# DEADENDS BOLTED STRAIGHT LINE STIRRUP CLAMP ALUMINUM

DA  
14

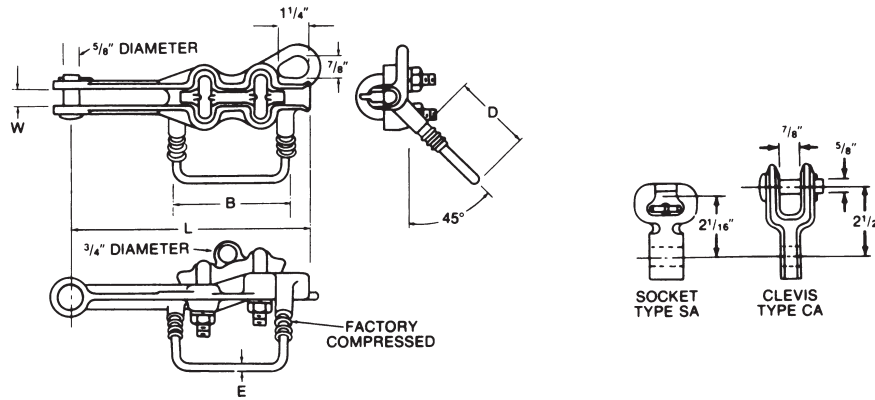
ALUMINUM
ADES



For distribution construction with all aluminum, ACSR or aluminum alloy conductor. This clamp is a combination deadend and stirrup or tap clamp. The stirrup permits tapping energized conductors without arching damage to the conductor.

Material and installation costs are less with the ADES combination clamp than with other equivalent methods of deadending and tapping a conductor.

- Material:** **Body and Keeper** - 356-T6 Aluminum Alloy
- Hardware** - Galvanized Steel
- Sockets and Clevises** - Ductile Iron, Galvanized
- Cotter Pin** - #302 Stainless Steel
- Stirrup** - Copper



## Product Data & Conductor Size

CATALOG NUMBER	FITTING		CLAMPING RANGE			ULTIMATE BODY STRENGTH LBS. (kN)	U-BOLTS		LOOP DIA. E	DIMENSIONS INCHES (MM)				APPROX. WT. EACH LBS. (KG)
	TYPE	CAT. NO.	ACSR	ALUMINUM	INCHES (MM)		NO.	SIZE INCHES (MM)		L	B	W	D	
ADES46N	None	-	#6 (6/1)	#6-7 Str.	.18-.46	6,000	2	3/8	.289	7-1/2	4	3/4	2	1.8 (0.82)
ADES46S	Socket	SA04	To	To	(4.57-11.68)	(26.69)		(9.53)	(7.3)	(190.50)	(101.60)	(19.05)	(50.80)	3.0 (1.36)
ADES46C	Clevis	CA04	2/0 (6/1)	2/0-19 Str.					#1					3.4 (1.54)
ADES60N	None	-	1/0 (6/1)	1/0-7 Str.	.36-.60	8,000	2	1/2	.325	9-5/8	4	3/4	3-1/16	2.8 (1.3)
ADES60S	Socket	SA04	To	To	(9.14-15.24)	(35.59)		(12.70)	(8.3)	(244.48)	(101.60)	(19.05)	(77.79)	4.0 (1.81)
ADES60C	Clevis	CA04	266.8 (18/1)	266.8-19 Str.					1/0					4.4 (2.00)
ADES70N	None	-	3/0 (6/1)	3/0-7 Str.	.46-.70	8,000	2	1/2	.325	10-3/4	4-31/32	3/4	2-1/8	3.0 (1.40)
ADES70S	Socket	SA04	To	To	(11.68-17.78)	(35.59)		(12.70)	(8.3)	(273.05)	(126.21)	(19.05)	53.98	4.2 (1.91)
ADES70C	Clevis	CA04	336.4 (18/1)	350-37 Str.					1/0					4.7 (2.13)

- NOTES: (1) Recommended Torque on U-bolts: 3/8"–240 in. lbs., 1/2"–480 in. lbs.  
 (2) Lifting eye is standard on keeper for hot line work.  
 (3) All bolted deadends are rated 40% of RBS - Partial tension per ANSI C119.4"  
 (4) For conductor sizes not shown in catalog, consult factory





# DEADENDS BOLTED QUADRANT STRAIN CLAMP ALUMINUM

ALUMINUM
PG/DE

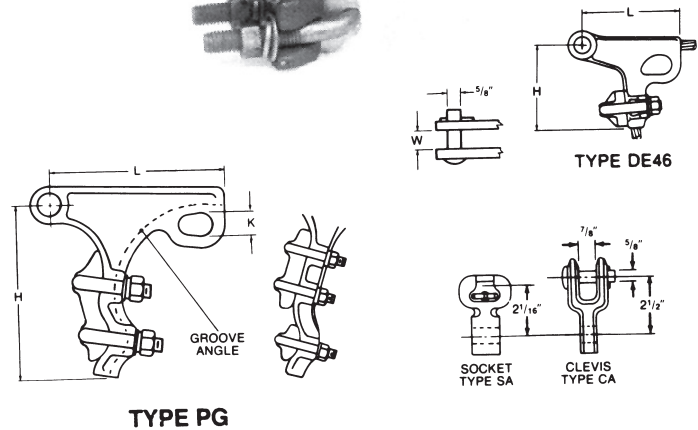
DA  
15

For distribution and light transmission construction with all aluminum, ACSR or aluminum alloy conductor.

**Material:** **Body and Keeper** - 356-T6 Aluminum Alloy  
**Hardware** - Galvanized Steel  
**Sockets and Clevises** - Ductile Iron, Galvanized  
**Cotter Pin** - #302 Stainless Steel



CATALOG NUMBER	DIMENSIONS INCHES (MM)			
	L	W	H	K
DE46	3-7/8 (98.30)	11/16 (17.46)	3-13/16 (96.84)	7/8 (22.10)
PG46	4-1/16 (103.18)	11/16 (17.46)	4-3/4 (120.65)	1 (25.40)
PG57	5-1/2 (139.7)	11/16 (17.46)	5-5/16 (134.87)	1 (25.40)
PG70	6-7/16 (163.51)	25/32 (19.84)	7 (177.80)	1-1/8 (28.58)
PG86L	6-9/16 (166.69)	1-1/16 (26.99)	7-7/16 (188.91)	1 (25.40)
PG100L	9-7/8 (250.83)	1-3/16 (30.16)	9-5/16 (236.54)	1-1/4 (31.75)



## Product Data & Conductor Size

CATALOG NUMBER	FITTING		CLAMPING RANGE			ULTIMATE BODY STRENGTH LBS. (kN)	U-BOLTS		GROOVE ANGLE	APPROX. WT. EACH LBS. (KG)
	TYPE	CAT. NO.	ACSR	ALUMINUM	INCHES (MM)		NO.	SIZE INCHES (MM)		
DE46N	None	--	#6 (6/1)	#6 -7 Str.	.18-.52	8,000 (35.59)	1	1/2 (12.70)	85°	1.2 (.54)
DE46S	Socket	SA04	To	To	(4.57-13.21)					2.2 (1.00)
DE46C	Clevis	CA04	3/0 (6/1)	3/0-19 Str.						2.2 (1.00)
PG46N**	None	--	#6 (6/1)	#6 -7 Str.	.18-.52	8,000 (35.59)	2	3/8 (9.53)	90°	1.1 (.50)
PG46S	Socket	SA04	To	To	(4.57-13.21)					2.4 (1.08)
PG46C	Clevis	CA04	3/0 (6/1)	3/0-19 Str.						2.7 (1.22)
PG57N**	None	--	#4 (6/1)	#3-7 Str.	.25-.57	10,000 (44.48)	2	1/2 (12.70)	90°	2.0 (.91)
PG57S	Socket	SA04	To	To	(6.35-14.48)					3.2 (1.45)
PG57C	Clevis	CA04	4/0 (6/1)	4/0-19 Str.						3.6 (1.63)
PG70N	None	--	101.8 (12/7)	3/0-7 Str.	.46-.73	15,000 (66.72)	2	1/2 (12.70)	85°	2.5 (1.13)
PG70S	Socket	SA04	To	To	(11.68-18.54)					3.8 (1.72)
PG70C	Clevis	CA04	336.4 (26/7)	400-37 Str.						4.1 (1.86)
PG86LN	None	--	134.6 (12/7)	4/0-7 Str.	.52-.88	15,000 (66.72)	2	1/2 (12.70)	70°	2.9 (1.32)
PG86LS	Socket	SA07	To	To	(13.21-22.35)					4.2 (1.91)
PG86LC	Clevis	CA06	556.5 (18/1)	556.5-37 Str.						4.6 (2.09)
PG100LN	None	--	3/0 (6/1)	4/0-7 Str.	.50-1.00	18,000 (80.07)	2	1/2 (12.70)	60°	4.5 (2.04)
PG100LS	Socket	SA10	To	To	(12.70-25.40)					5.9 (2.68)
PG100LC	Clevis	CA101	666.6 (24/7)	750-61 Str.						6.2 (2.81)

NOTE: (1) Recommended Torque on U-bolts: 3/8"—240 in. lbs., 1/2"—480 in. lbs.  
(2) All bolted deadends are rated 40% of RBS - Partial tension per ANSI C119.4"  
(3) For conductor sizes not shown in catalog, consult factory

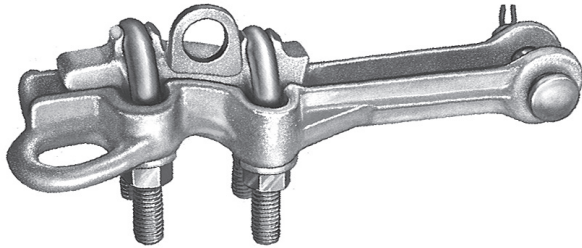
\*\* RUS Listed



# DEADENDS BOLTED STRAIGHT LINE STRAIN CLAMP FERROUS

DA  
16

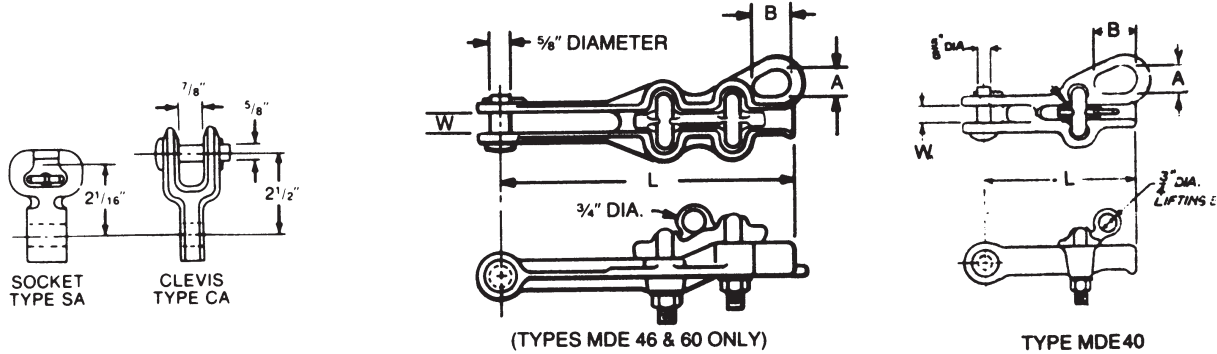
DUCTILE IRON
MDE



For deadending static wires.

May be used to deadend copper or Copperweld® phase conductors. Magnetic induction heating will occur.

**Material:** **Body and Keeper** - Galvanized Ductile Iron  
**Hardware** - Galvanized Steel  
**Sockets and Clevises** - Ductile Iron, Galvanized  
**Cotter Pin** - #302 Stainless Steel



## Product Data & Conductor Size

CATALOG NUMBER	FITTING		CLAMPING RANGE INCHES (MM)	ULTIMATE BODY STRENGTH LBS. (KN)	U-BOLTS		DIMENSIONS INCHES (MM)			APPROX. WT. EACH LBS. (KG)
	TYPE	CAT. NO.			NO.	SIZE INCHES (MM)	L	W	A X B	
MDE40N	None	-	.16-.40	5,000	1	1/2	6-3/16	13/16	7/8 x 1-1/4	2.1 (.95)
MDE40S	Socket	SA04	(4.06-10.16)	(22.24)	1	(12.70)	(157.16)	(20.6)	(22.2 x 31.8)	3.4 (1.54)
MDE40C	Clevis	CA04			1					3.7 (1.68)
MDE46N	None	-	.18-.46	6,000	2	3/8	7-1/2	3/4	7/8 x 1-1/4	2.5 (1.13)
MDE46S	Socket	SA04	(4.57-11.68)	(26.69)	2	(9.53)	(190.5)	(19.05)	(22.2 x 31.8)	3.8 (1.72)
MDE46C	Clevis	CA04			2					4.1 (1.86)
MDE60N	None	-	.36-.60	8,000	2	1/2	8-15/16	3/4	7/8 x 1-1/4	3.8 (1.72)
MDE60S	Socket	SA04	(9.14-15.24)	(35.59)	2	(12.70)	(227.01)	(19.05)	(22.2 x 31.8)	5.0 (2.27)
MDE60C	Clevis	CA04			2					5.4 (2.45)
876722000	None	-	.46-.86	10,000	2	1/2	9-1/4	3/4	1 x 1-7/16	3.8 (1.72)
			(11.68-21.84)	(44.48)	2	(12.70)	(234.95)	(19.05)	(25.4 x 36.5)	
876822000	None	-	.65-1.25	10,000	2	1/2	11	3/4	1 x 1-13/16	5.5 (2.49)
			(16.51-31.75)	(44.48)	2	(12.70)	(279.40)	(19.05)	(25.4 x 46.0)	
876922000	None	-	.86-1.55	10,000	2	3/8	12.5	3/4	1-1/16 x 2-1/8	7.9 (3.58)
			(21.84-39.37)	(44.48)	2	(9.53)	(317.50)	(19.05)	(27.0 x 54.0)	

NOTES: (1) Recommended Torque on U-bolts: 3/8"—240 ins. lbs., 1/2"—480 in. lbs., 5/8"—720 in. lbs. (4) All bolted deadends are rated 40% of RBS - Partial tension per ANSI C119.4"  
 (2) Lifting eye is standard on MDE type clamps. (5) For conductor sizes not shown in catalog, consult factory  
 (3) 87600 series without lifting eye.

Copperweld® is a registered trademark of Fushi Copperweld Inc.



# DEADENDS BOLTED STRAIGHT LINE SPRING-LOADED - SIDE OPENING FERROUS

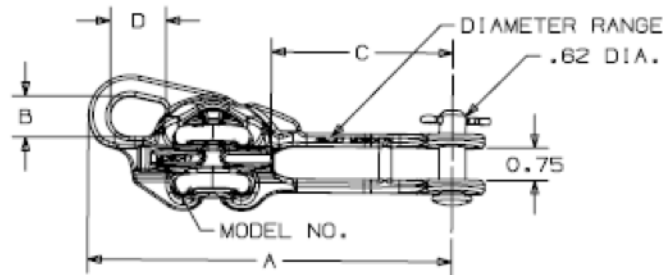
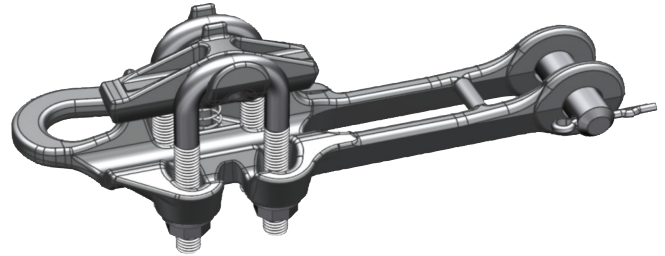
DUCTILE IRON  
MDSO

DA  
17

For deadending static wires.

May be used to deadend copper or Copperweld® phase conductors.  
Magnetic induction heating will occur.

**Material:** **Body and Keeper** - Galvanized Ductile Iron  
**Hardware** - Galvanized Steel  
**Sockets and Clevises** - Ductile Iron, Galvanized  
**Cotter Pin** - #302 Stainless Steel



## Product Data & Conductor Size

CATALOG NUMBER	U-BOLTS		CLAMPING RANGE (IN)		ULTIMATE BODY STRENGTH (LBS)		DIMENSIONS (IN)			
	NO.	SIZE	MIN	MAX	BODY	SAG EYE	A	B	C	D
MDSO47N	2	3/8	0.19	0.47	8000	6000	8.53	0.94	4.27	1.32
MDSO57N	2	3/8	0.25	0.57	8000	6000	8.94	1.02	4.27	1.42
MDSO70N	2	3/8	0.31	0.70	9000	6000	9.54	1.03	6.33	1.50

NOTES: (1) All bolted deadends are rated 40% of RBS - Partial tension per ANSI C119.4"  
(2) For conductor sizes not shown in catalog, consult factory

Copperweld® is a registered trademark of Fushi Copperweld Inc.



# DEADENDS BOLTED QUADRANT STRAIN CLAMP FERROUS

DA  
18

DUCTILE IRON  
SWDE/MD

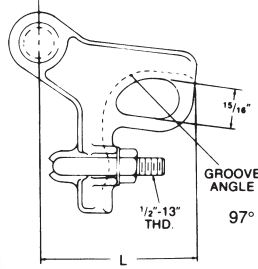


FIGURE 4

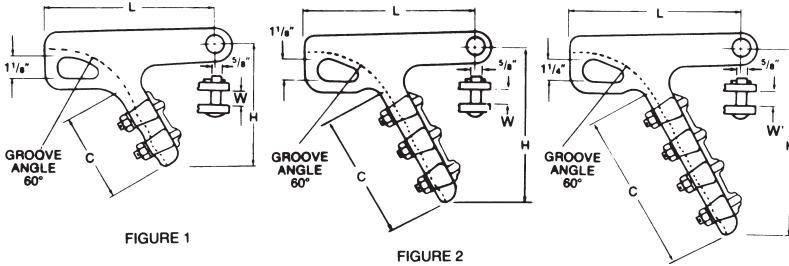
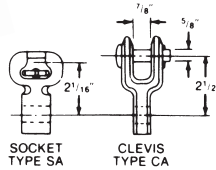


FIGURE 1

FIGURE 2

For deadending static wires.

May be used to deadend copper or Copperweld® phase conductors. Magnetic induction heating will occur.

**Material:** **Body and Keeper** - Galvanized Ductile Iron  
**Sockets and Clevises** - Ductile Iron, Galvanized  
**Cotter Pin** - #302 Stainless Steel

CATALOG NUMBER	DIMENSIONS INCHES (MM)			
	L	H	C	W
MD52N	2-25/32	4-3/32	2-1/8	5/8
MD52S	(70.61)	(103.89)	(54.10)	(15.88)
MD52C				
SWDE46N	6	5-1/2	4-3/8	5/8
SWDE46S	(152.40)	(139.70)	(111.12)	(15.88)
SWDE46C				
SWDE55N	8	8-5/8	7-3/8	11/16
SWDE55S	(203.20)	(219.08)	(187.33)	(17.46)
SWDE55C				
SWDE84N	10-3/4	10-5/8	8-7/16	15/16
SWDE84S	(273.05)	(270.00)	(214.38)	(23.88)
SWDE84C				

## Product Data & Conductor Size

CATALOG NUMBER	FITTING		FIGURE NUMBER	CLAMPING RANGE					ULTIMATE BODY STRENGTH LBS. (kN)	U-BOLTS		APPROX. WT. EACH LBS. (KG)
	TYPE	CAT. NO.		GALV. STEEL			COPPER	INCHES (MM)		NO.	SIZE INCHES (MM)	
				DIA.	NO. STR.	GRADE						
MD52N	None	--	4	ACSR	--	--	#6 Sol.	.160-.563 (4.06-14.30)	12,000 (53)	1	1/2 (12.70)	1.9 (.86) 3.2 (1.45) 3.5 (1.59)
MD52S	Socket	SA04		#6 (6/1) to								
MD52C	Clevis	CA04		4/0 (6/1)								
SWDE46N	None	--	1	3/8 (9.53)	7	Utilities	#6 Str.	.18-.46 (4.57-11.68)	15,000 (67)	2	1/2 (12.70)	4.1 (1.86) 5.4 (2.45) 5.7 (2.49)
SWDE46S	Socket	SA04		7/16 (11.11)								
SWDE46C	Clevis	CA04		3/16 (4.76)								
SWDE55N	None	--	2	1/4 (6.35)	7	All Grades Within Clamping And Strength Rating	#4 (7)	.22-.55 (5.59-13.97)	19,000 (85) 18,000 (80) 18,000 (80)	3	1/2 (12.70)	6.0 (3.08) 8.0 (3.63) 8.4 (3.81)
SWDE55S	Socket	SA04		9/32 (7.14)								
SWDE55C	Clevis	CA04		5/16 (7.94)								
				7/16 (11.11)								
				1/2 (12.70)								
SWDE84N	None	--	3	3/8 (9.53)	7	Strength Rating	2/0 Sol.	.36-.84 (8.89-21.34)	4	1/2 (12.70)	11.0 (4.99) 12.35 (5.60) 12.7 (5.76)	
SWDE84S	Socket	SA07		thru								
SWDE84C	Clevis	CA06		3/4 (19.05)								

- NOTES: (1) Sag Eye Ultimate Strength is 60% of Clamp strength without fitting.  
(2) Rated slip strength as a % of conductor RBS varies with cable size and stranding. Minimum slip strength on standard shield wire cables is 40% RBS (Partial Tension). For many shield wire cables, minimum slip strength of this clamp series is 60% RBS (Normal Tension). (Consult factory for slip strength test data on specific clamp & conductor combinations).  
(3) Recommended torque on u-bolts: 1/2" -- 480 in-lbs.

- (4) Bolt and Nut may be substituted for clevis pin by adding suffix "BNK" to catalog number.  
(5) All bolted deadends are rated 40% of RBS - Partial tension per ANSI C119.4"  
(6) For conductor sizes not shown in catalog, consult factory

Copperweld® is a registered trademark of Fushi Copperweld Inc.



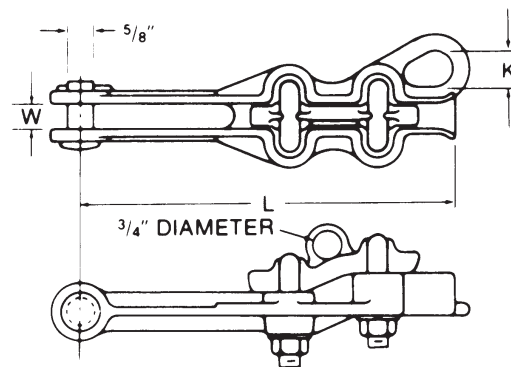
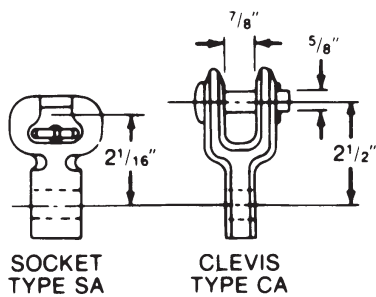
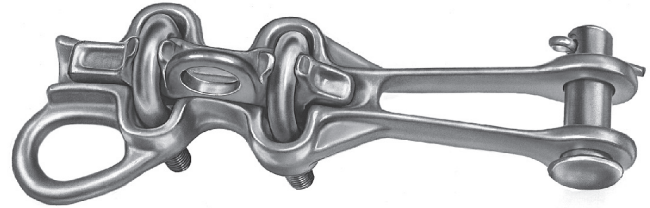
# DEADENDS BOLTED STRAIGHT LINE STRAIN CLAMP BRONZE

BRONZE
BDE

DA  
19

For distribution and light transmission construction with copper or Copperweld® conductor. Power loss, corrosion and heat rise are all reduced to a minimum due to the nonferrous construction

**Material:** **Body** - High Strength Aluminum Bronze Alloy or Red Brass  
**Keeper** - Electrical Bronze  
**Hardware** - Galvanized Steel  
**Sockets and Clevises** - Ductile Iron, Galvanized  
**Cotter Pin** - #302 Stainless Steel



## Product Data & Conductor Size

CATALOG NUMBER	FITTING		CLAMPING RANGE		ULTIMATE BODY STRENGTH LBS. (kN)	U-BOLTS		DIMENSIONS INCHES (MM)			APPROX. WT. EACH LBS. (KG)
	TYPE	CAT. NO.	COPPER	INCHES (MM)		NO.	SIZE INCHES (MM)	L	W	K	
BDE46N	None	--	#6 Sol.	.16-.46	6,000 (26.69)	2	3/8 (9.53)	7-1/4 (184.15)	3/4 (19.05)	7/8 (22.23)	3.2 (1.45)
BDE46S	Socket	SA04	To	(4.06-11.68)	4.4 (2.00)						
BDE46C	Clevis	CA04	4/0 Sol.		4.8 (2.18)						
BDE60N	None	--	2/0 Sol.	.36-.60	8,000 (35.59)	2	1/2 (12.70)	8-3/4 (222.25)	3/4 (19.05)	7/8 (22.23)	5.6 (2.54)
BDE60S	Socket	SA04	To	(9.14-15.24)	6.9 (3.13)						
BDE60C	Clevis	CA04	250 MCM		7.2 (3.27)						
BDE70N	None	--	4/0 Sol.	.46-.70	8,000 (35.59)	2	1/2 (12.70)	10-3/4 (273.05)	3/4 (19.05)	15/16 (23.81)	6.5 (2.95)
BDE70S	Socket	SA04	To	(11.68-17.78)	7.8 (3.54)						
BDE70C	Clevis	CA04	350 MCM		8.1 (3.67)						
BDE86N	None	--	4/0-7 Str.	.52-.86	8,000 (35.59)	2	1/2 (12.70)	11 (279.40)	15/16 (23.81)	15/16 (23.81)	7.0 (3.18)
BDE86S	Socket	SA06	To	(13.21-21.84)	8.3 (3.76)						
BDE86C	Clevis	CA06	550 MCM		8.7 (3.95)						
BDE98N	None	--	350-37 Str.	.68-.98	9,000 (40.03)	2	1/2 (12.70)	11-5/8 (295.28)	1-1/16 (26.99)	15/16 (23.81)	7.4 (3.36)
BDE98S	Socket	SA06	To	(17.27-24.89)	8.7 (3.95)						
BDE98C	Clevis	CA06	700 MCM		9.1 (4.13)						

NOTES: (1) Recommended Torque on U-bolts: 3/8"—240 ins. lbs., 1/2"—480 in. lbs.  
(2) Lifting eye is standard on keeper for hot line work.  
(3) All bolted deadends are rated 40% of RBS - Partial tension per ANSI C119.4"  
(4) For conductor sizes not shown in catalog, consult factory

Copperweld® is a registered trademark of Fushi Copperweld Inc.



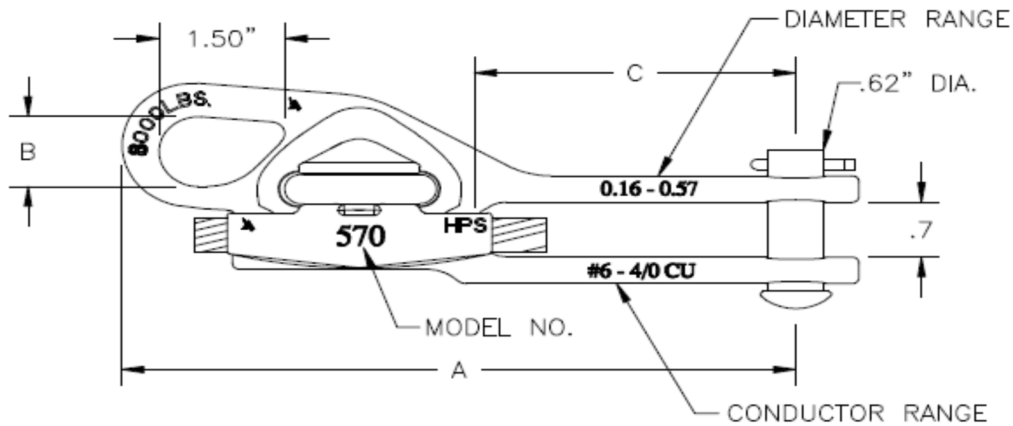
DA  
20

BRONZE
BSOD

# DEADENDS BOLTED STRAIGHT LINE SPRING-LOADED SIDE OPENING BRONZE

For distribution and light transmission construction with copper or Copperweld® conductor. Power loss, corrosion and heat rise are all reduced to a minimum due to the nonferrous construction

- Material:** **Body and Keeper** - Bronze Alloy 112  
**Hardware** - Galvanized Steel  
**Sockets and Clevises** - Ductile Iron, Galvanized  
**Cotter Pin and Spring Clip** - Stainless Steel



## Product Data & Conductor Size

CATALOG NUMBER	U-BOLTS		CLAMPING RANGE (IN)				ULTIMATE BODY STRENGTH (LBS)		DIMENSIONS (IN)		
	NO.	SIZE	COPPER		INCHES (MM)		BODY	SAG EYE	A	B	C
			MIN	MAX	MIN	MAX					
BSOD5701N	1	0.50	#6 (SOL)	4/0 (19 STR)	0.16 (4.06)	0.57 (11.68)	8000	8000	8.62	1	3.75

NOTES: (1) All bolted deadends are rated 40% of RBS - Partial tension per ANSI C119.4"  
 (2) For conductor sizes not shown in catalog, consult factory

Copperweld® is a registered trademark of Fushi Copperweld Inc.





# DEADENDS BOLTED STRAIGHT LINE STRAIN CLAMP BRONZE

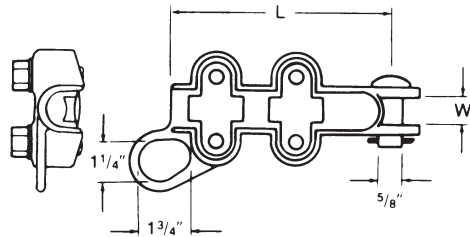
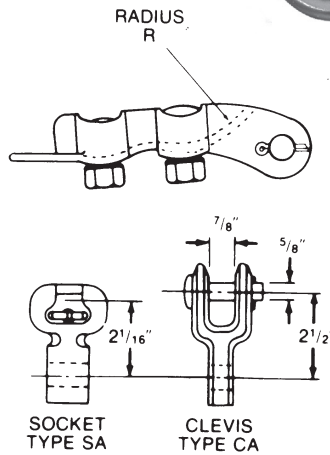
BRONZE
BSG

DA  
21

These compact strain clamps are ideal for pole type substations and other short span deadending requirements with copper or Copperweld® conductor.

Because of non-ferrous construction, corrosion and heat rise on heavy current secondary circuits are reduced to a minimum. The threads do not protrude and all surfaces are rounded for quick, efficient taping.

- Material:**
- Body and Keeper** - High Strength Aluminum Bronze Alloy
  - Hex Head Bolts and Lock Washers** - Silicon Bronze
  - Sockets and Clevises** - Ductile Iron, Galvanized
  - Clevis Pin** - Galvanized Steel
  - Cotter Pin** - #302 Stainless Steel



## Product Data & Conductor Size

CATALOG NUMBER	FITTING		CLAMPING RANGE		ULTIMATE BODY STRENGTH LBS. (kN)	HEX-HEAD BOLTS		DIMENSIONS INCHES (MM)			APPROX. WT. EACH LBS. (KG)
	TYPE	CAT. NO.	COPPER	INCHES (MM)		NO.	SIZE INCHES (MM)	L	W	R	
BSG050N	None	--	2/0 Sol.	.36-.875	5,500 (24.47)	4	1/2 (12.70)	6-1/2 (165.1)	11/16 (17.46)	4 (101.60)	3.5 (1.59)
BSG050S	Socket	SA04	To	(9.14-22.23)							4.8 (2.18)
BSG050C	Clevis	CA04	550 MCM								4.8 (2.18)
BSG100N	None	--	500	.81-1.25	7,500 (33.36)	4	1/2 (12.70)	7-1/2 (190.5)	11/16 (17.46)	6 (152.40)	4.7 (2.13)
BSG100S	Socket	SA04	To	(20.57-31.75)							6.0 (2.72)
BSG100C	Clevis	CA04	1000 MCM								6.3 (2.86)

NOTE: (1) Recommended Torque on bolts: 1/2"–480 in. lbs.  
 (2) All bolted deadends are rated 40% of RBS - Partial tension per ANSI C119.4"  
 (3) For conductor sizes not shown in catalog, consult factory

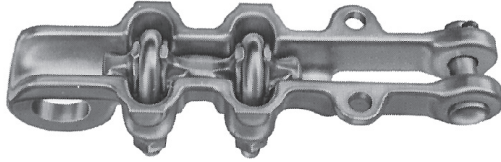
Copperweld® is a registered trademark of Fushi Copperweld Inc.

# DEADENDS BOLTED STRAIGHT LINE STRAIN CLAMP BRONZE

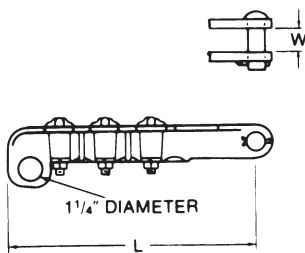
BRONZE

BSC

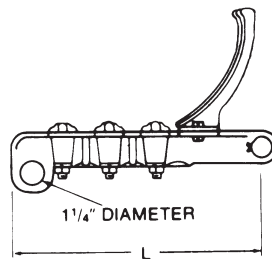
These clamps are recommended for copper or Copperweld® conductor. Type BSCG is supplied with a standoff guide to assure clearance between conductor and insulator disc when clamps are used as a through type deadend or strain.



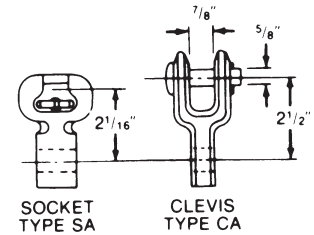
**Material:** **Body** - High Strength Aluminum Bronze Alloy  
**Keeper and Guide** - Electrical Bronze  
**Hardware** - Galvanized Steel  
**Sockets and Clevises** - Ductile Iron, Galvanized  
**Cotter Pin** - #302 Stainless Steel



TYPE BSC  
WITHOUT GUIDE



TYPE BSCG  
WITH GUIDE



SOCKET  
TYPE SA

CLEVIS  
TYPE CA

## Product Data & Conductor Size

CATALOG NUMBER	FITTING		CLAMPING RANGE		ULTIMATE BODY STRENGTH LBS. (KN)	U-BOLTS		DIMENSIONS INCHES (MM)		APPROX. WT. EACH LBS. (KG)
	TYPE	CAT. NO.	COPPER	INCHES (MM)		NO.	SIZE INCH-ES (MM)	L	W	
BSC024N	None	--	#2 Sol.	.258-.528 (6.55-13.41)	8,000 (35.59)	2	1/2 (12.70)	9-1/8 (231.78)	11/16 (17.46)	3.1 (1.41)
BSC024S	Socket	SA04	To							4.4 (2.00)
BSC024C	Clevis	CA04	4/0 Str.	.52-.875 (13.21-22.23)	8,000 (35.59)	2	1/2 (12.70)	9-5/8 (244.48)	11/16 (17.46)	4.4 (2.00)
BSC050N	None	--	To							3.8 (1.72)
BSC050S	Socket	SA04	550 MCM	.81-1.25 (20.57-31.75)	10,000 (44.48)	3	1/2 (12.70)	13-1/8 (333.38)	13/16 (20.64)	5.1 (2.31)
BSC050C	Clevis	CA04	To							5.1 (2.31)
BSC100N	None	--	1000 MCM	.81-1.25 (20.57-31.75)	10,000 (44.48)	3	1/2 (12.70)	13-1/8 (333.38)	13/16 (20.64)	6.9 (3.13)
BSC100S	Socket	SA04	To							8.2 (3.72)
BSC100C	Clevis	CA04	To							8.2 (3.72)

- NOTES: (1) Recommended Torque on U-bolts: 3/8"—240 ins. lbs., 1/2"—480 in. lbs.  
(2) To obtain silicon bronze hardware add suffix—"ED". Example, BSC024NED.  
(3) All bolted deadends are rated 40% of RBS - Partial tension per ANSI C119.4"  
(4) For conductor sizes not shown in catalog, consult factory

Copperweld® is a registered trademark of Fushi Copperweld Inc.



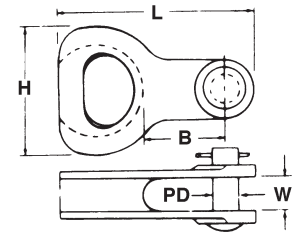
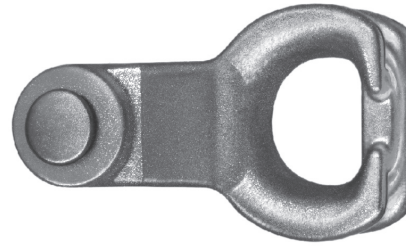
# DUCTILE DEADEND THIMBLE TYPE DDT

DA  
23

DUCTILE IRON  
DDT

Provides a convenient and efficient means for loop deadending of steel static wire and bare or insulated aluminum or copper phase wires. Magnetic induction heating will occur.

**Material:** Body - Ductile Iron, Galvanized  
Clevis Pin - Galvanized Steel  
Cotter Pin - #302 Stainless Steel



## Product Data & Conductor Size

CATALOG NUMBER	CONDUCTOR RANGE INCHES (MM)	ULTIMATE BODY STRENGTH LBS. (kN)	DIMENSIONS INCHES (MM)					APPROX. WT. EACH LBS. (KG)
			L	B	W	H	PD	
DDT07	0-.875 (0-22.23)	40,000 (178)	5-3/8 (136.53)	2-5/16 (58.74)	7/8 (22.23)	3-1/4 (82.55)	3/4 (19)	2.5 (1.13)
DDT12*	0-1.0 (0-25.40)	60,000 (267)	7-13/16 (45.97)	3-3/4 (95.25)	1-5/16 (33.27)	3-3/4 (95.25)	1 (25)*	5.7 (2.5)

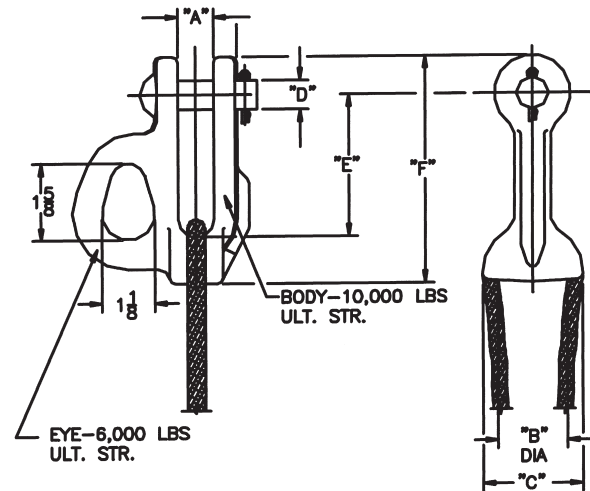
\*Bolt, Nut & Cotter Pin are standard.

# DEADENDS ALUMINUM DEADEND THIMBLE TYPE ADET

ALUMINUM  
ADET

Provides a convenient and efficient means for loop deadending of steel static wire and bare or insulated aluminum or copper phase wires. Magnetic induction heating will occur.

**Material:** Body - Ductile Iron, Galvanized  
Clevis Pin - Galvanized Steel  
Cotter Pin - #302 Stainless Steel



## Product Data & Conductor Size

CATALOG NUMBER	CONDUCTOR RANGE INCHES (MM)		RATED STRENGTH LBS. (kN)		DIMENSIONS INCHES (MM)					
	ACSR	GUY WIRE	THIMBLE	EYE	A	B	C	D	E	F
ADET75	#6 - 336.4	3/16 - 5/16	10,000 (44.48)	6,000 (26.69)	0.75 (19)	1.5 (38.1)	2.12 (53.8)	0.63 (16)	3 (76.2)	4.81 (122.2)
ADET88	#6 - 477	3/16 - 3/8	12,000 (53.38)	7,000 (31.14)	0.88 (22.4)	1.5 (38.1)	2.12 (53.8)	0.63 (16)	3 (76.2)	4.81 (122.2)



# SUSPENSION ALUMINUM ANGLE CLAMP

DA  
24

ALUMINUM
AAC

Intended for angle construction with all aluminum, ACSR or aluminum alloy conductor.

**Material:** **Body and Keeper** - 356-T6 Aluminum Alloy  
**Hardware** - Galvanized Steel  
**Cotter Pin** - #302 Stainless Steel

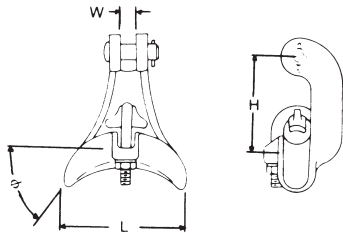
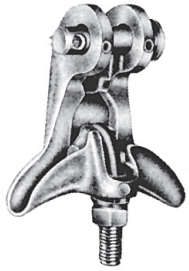
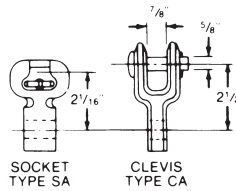


FIGURE 2



SOCKET  
TYPE SA

CLEVIS  
TYPE CA

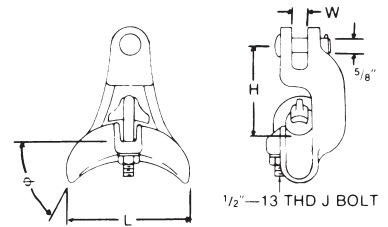


FIGURE 1

## Ordering Information

CATALOG NUMBER	FIG. NO.	CLAMPING RANGE INCHES (MM)	ULTIMATE BODY STRENGTH LBS. (kN)	MAX. TAKE-OFF ANGLE	DIMENSIONS INCHES (MM)			APPROX. WT. EACH LBS. (KG)
				°	L	W	H	
AAC301	2	.198-.732 (5.03-18.59)	7,000 (31)	45°	4-1/4 (107.95)	11/16 (17.46)	2-7/8 (73.02)	1.25 (.57)
AAC302	1	.198-.732 (5.03-18.59)	7,000 (31)	45°	4-1/4 (107.95)	11/16 (17.46)	2-7/8 (73.02)	1.25 (.57)
AAC104N	1	.50-1.10 (12.70-27.94)	12,000 (53)	60°	5-1/4 (133.35)	11/16 (17.46)	4-1/8 (104.77)	2.3 (1.04)
AAC10490N	2	.50-1.10 (12.70-27.94)	12,000 (53)	60°	5-1/4 (133.35)	11/16 (17.46)	4-1/8 (104.77)	2.2 (1)

NOTES: (1) Sockets and clevises can be supplied by adding "S" or "C" to catalog number. Example, AAC10490S.  
 (2) Recommended torque on 1/2" J-bolts: 300 in.-lbs.



# DEADENDS BOLTED MIDSPAN CLAMPS AND DEADENDS ALUMINUM

ALUMINUM  
GM100A

DA  
25

Fargo Mid Span Clamps and Deadends may be used on open wire or triplex secondaries for single or multiple service connectors away from the pole. Cast, high strength aluminum provides corrosion resistance and conductor compatibility.

The Fargo GM104A is designed for neutral deadend connections. Service deadends may be attached through the side loops permitting installation at any angle. The long contact surfaces protect the neutral against corrosion and damage from the pull of the service. Fitted grooves are provided to protect covered phase wire when installed on triplex secondaries.

The Fargo GM1091A is easily installed by swiveling the keepers over the run conductor. Double clamping of the run provides parallel current paths. Side opening keepers permit easy insertion and quick connections. Either tap can be installed or removed without unclamping the run conductor and installation is made without disassembly.

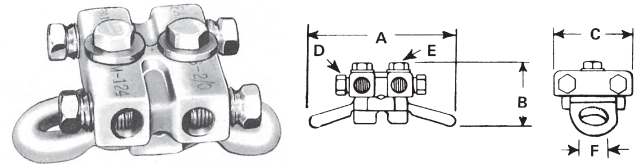
The Fargo GM124A combination connector and deadend provides both electrical and mechanical neutral connections for secondary service drops. Service deadends of either rigid or flexible bail types may be easily installed on the projecting hooks of the body of the clamp. The design of the hook retains the bail in position during vibration or shock loading of either the secondary neutral or the service.

The aluminum 4 tap connector block provides a compact terminal for electrically joining the neutrals of one through four services. Each service is an individual connection permitting convenient installation or removal of service.

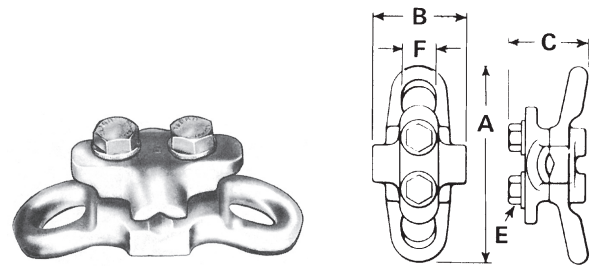
The Fargo GM125A utilizes the aluminum 4 tap connector block and an aluminum base or body with side loops for attachment of service deadends. The use of high strength aluminum washer head bolts permits ease of installation on either open wire or triplex secondary neutrals away from the poles.

- Material:** **Casting** - High Strength Aluminum Alloy  
**Hardware** - Stainless Steel (GM1091A)  
 High Strength AL Alloy  
 (GM104, GM124, GM125)

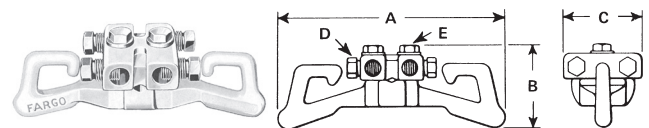
**Note:** Add suffix "L" to catalog number for inhibitor protection and individual packaging.



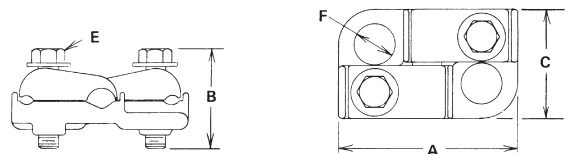
GM125A



GM104A



GM124A



GM1091A

## Product Data & Conductor Size

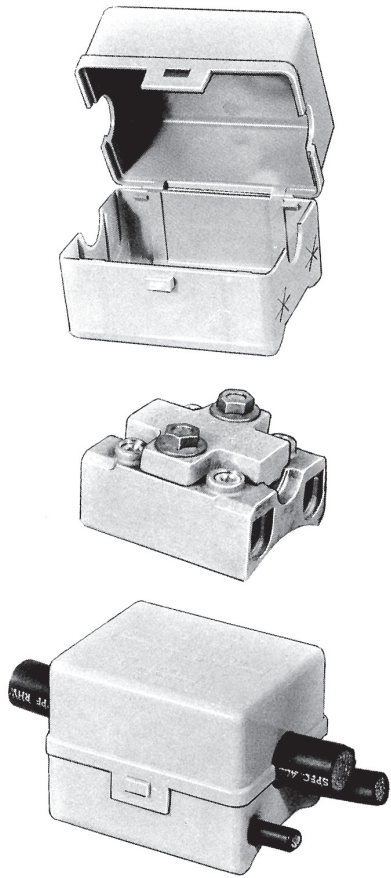
CATALOG NUMBER	CONDUCTOR RANGE, ACSR				DIMENSIONS INCHES (MM)					
	RUN		TAP							
	MAX.	MIN.	MAX.	MIN.	A	B	C	D	E	F
GM104A	336.4	4	—	—	4-1/8	2	2-1/8	—	3/8	5/8
GM1091A	4/0	2	1/0	6	3-3/8	1-7/8	2-1/16	—	3/8	5/8
GM124A	4/0	4	2/0	6	7	2-5/8	2-7/8	1/2	3/8	—
GM125A	4/0	4	2/0	6	4-1/8	2-1/4	2-7/8	1/2	3/8	5/8



# IN-SPAN PHASE CONNECTOR AND HOUSING

DA  
26

ALUMINUM
GM128



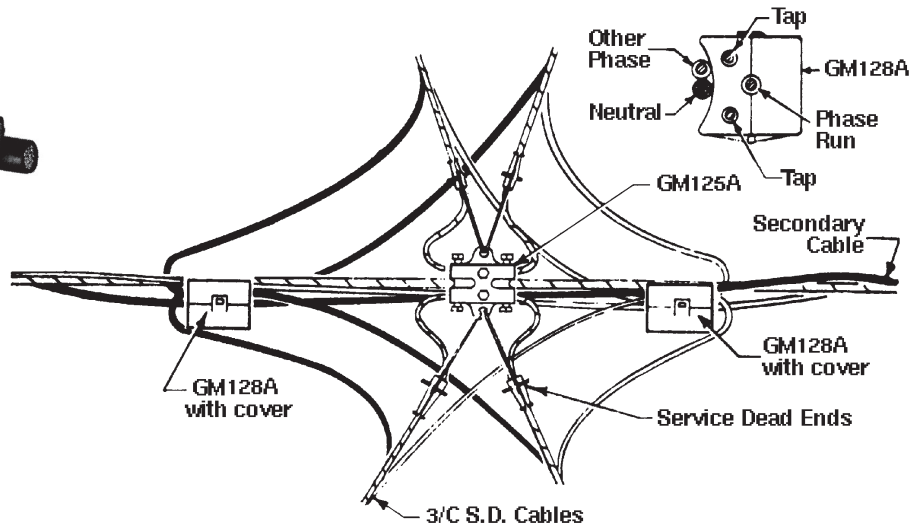
This in-span phase connector is designed for use on open wire or multiple cable secondaries to permit aesthetic readily accessible service connections.

The connector body is constructed of high strength aluminum for optimum corrosion resistance and light weight. The Fargo housing or case provides protective insulation from adjacent conductors and is formed for accessibility and ease of application. Secondary run and service tap openings are pre-cut for alignment and tap conductor insertion or removal.

The connector locks in position inside the case providing one piece for assembly.

For best performance, the connectors are supplied with Fargolene® inhibitor protected grooves and are individually packaged in plastic bags.

The Fargo GM128AKL makes an insulated phase connector system for up to four service taps and may be used with the Fargo neutral span clamps.



## Product Data & Conductor Size

CATALOG NUMBER	RANGE		APPROX. OVERALL DIMENSIONS INCHES			WEIGHT LBS. (KG)
	RUN	TAP	LENGTH (MM)	WIDTH (MM)	HEIGHT (MM)	
GM128AL (Connector Only)	2 Str. - 350 kcmil	4 Sol. - 3/0 Str.	3-5/16 (84.03)	2-5/8 (66.81)	2 (50.90)	1.04 (.47)
GM128AKL (Connector and Housing)	2 Str. - 350 kcmil	4 Sol. - 3/0 Str.	3-13/16 (97.03)	3-1/4 (82.71)	3 (76.35)	1.20 (.54)





# DEADENDS BOLTED IN-SPAN NEUTRAL TAPS ALUMINUM

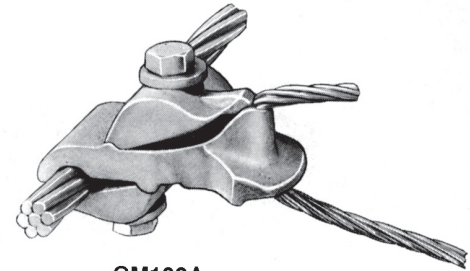
ALUMINUM
GM100

DA  
27

Fargo in-span taps offer a wide range of neutral connections on open wire or multiple cable secondaries.

- A wide angle bell mouth opening permits tap offs up to 45° in either direction from the center line of the clamp.
- Constructed of high strength aluminum alloy these clamps provide a minimum holding power of 1250 pounds.
- Long contoured contact surfaces protect the neutral from the pull of the service.
- Using less parts than conventional units, these taps are available for one, two or four service dead end connections.

**Material:** **Body Casting** - Aluminum Alloy  
**Hardware** - Stainless Steel



GM102A

**Note:** Add suffix "L" to catalog number for inhibitor protection and individual packs. Ex. - GM102AL

## Product Data & Conductor Size

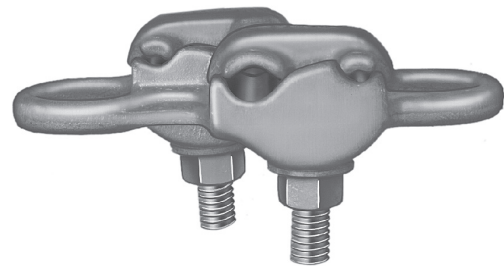
CATALOG NUMBER	RUN		TAP		NO. OF TAPS	APPROX. OVERALL DIMENSIONS INCHES		
	MAX.	MIN.	MAX.	MIN.		LENGTH (MM)	WIDTH (MM)	HEIGHT (MM)
GM102A	4/0 ACSR	1/0 ACSR	2 ACSR	6 ACSR	1	3-3/8 (85.72)	1-1/2 (38.1)	2-3/4 (69.85)

# ALUMINUM MID-SPAN CONNECTOR TYPE MSNT

ALUMINUM
MSNT

For aluminum or ACSR triplex conductor. Has a double take-off loop. Bolts are peened to make nut captive.

**Material:** **Body** - Top Member-Aluminum Alloy  
**Bottom Member** - Bronze Alloy-Tin Plated  
**Hardware** - Galvanized Steel



## Product Data & Conductor Size

CATALOG NUMBER	CONDUCTOR RANGE (AWG)		DIMENSIONS INCHES (MM)			APPROX. WEIGHT LBS. (KG)
	NEUTRAL	PHASE	L	J	DIA.	
MSNT2	1/0-4/0 ACSR	#6-1/0 AAC OR ACSR	4-11/16 (119.09)	3/8 (9.52)	7/8 (22.22)	.64 (.29)



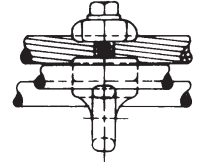
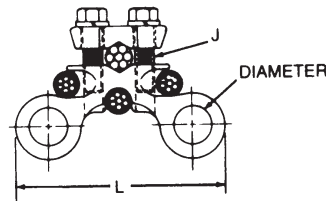
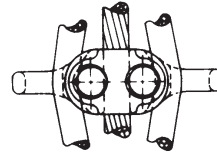
# ALUMINUM MID-SPAN CONNECTOR TYPE MSE

DA  
28

ALUMINUM
MSE

For aluminum or ACSR triplex or quadruplex conductor.

**Material:** Body - Aluminum Alloy  
Hardware - Plated Steel



## Product Data & Conductor Size

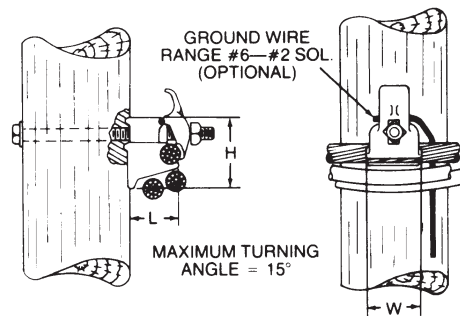
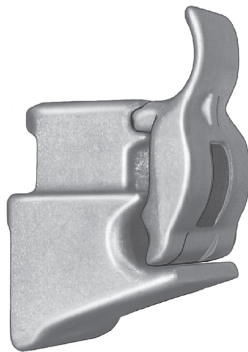
CATALOG NUMBER	CONDUCTOR RANGE (AWG OR MCM)		DIMENSIONS INCHES (MM)			APPROX. WEIGHT LBS. (KG)
	NEUTRAL	PHASE	L	J	DIA.	
MSE416981	#4-4/0 ACSR	#6-1/0 AAC OR ACSR	4-1/8 (104.78)	3/8 (9.52)	3/4 (19.05)	.46 (.21)

# ALUMINUM SUPPORT BRACKET TYPE TTSB (TRIPLEX SUSPENSION)

ALUMINUM
TTSB

For aluminum or ACSR triplex conductor. Can be mounted to a flat surface or to a wood pole. 5/8-11T galvanized thru-bolt is not furnished.

**Material:** Aluminum Alloy



## Product Data & Conductor Size

CATALOG NUMBER	CONDUCTOR RANGE (AWG OR MCM)	DIMENSIONS INCHES (MM)			APPROX. WEIGHT LBS. (KG)
		L	W	H	
TTSB416671	#2 ACSR-477 MCM (AAC)	2-5/16 (58.72)	2-3/8 (60.32)	3-5/16 (84.12)	.38 (.17)