

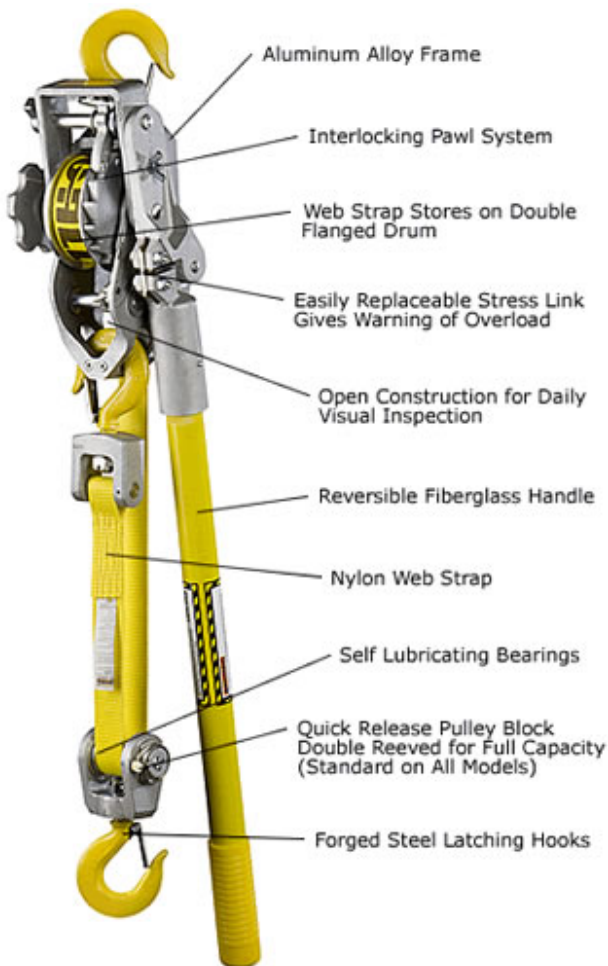


800-544-3137  
**Material Handling Equipment**  
1-800-544-3137  
**Service - Installation - Custom Fabrication**

## Back to Product Category **WEB STRAP RATCHET LEVER HOISTS**

All web strap hoists comply with ANSI B30.21.

Web strap ratchet lever hoists are specifically designed for overhead maintenance and construction of energized lines. For many years, web strap pullers have been the choice for linemen throughout the world. Web strap ratchet lever hoists range from 1 to 2 ton capacities. Our newest small frame ratchet lever hoists, the convertible model 30, can quickly go from single to double rigged capacity with no extra parts to misplace. When you need a lineman's puller that gives you the quality, durability and reliability you expect, a web strap ratchet lever hoist is the answer.

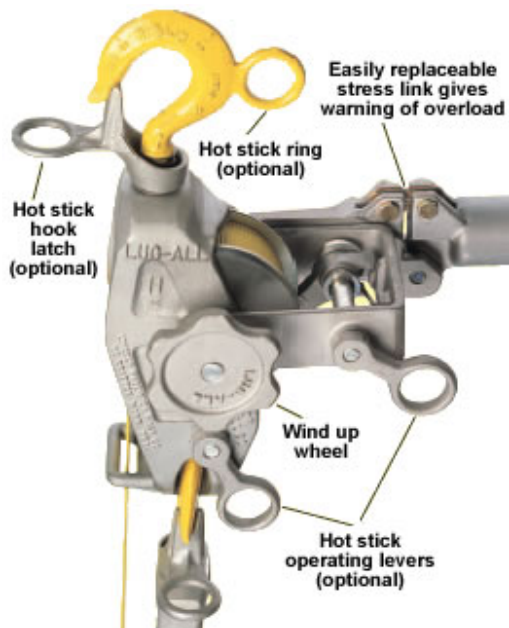


### FEATURES:

- **Capacities** - 1000 pounds to 2000 pounds single line; 2000 pounds to 4000 pounds double line
- **Exclusive Breakable Stress Link** - Web strap ratchet lever hoists features our exclusive breakable stress link. When the web strap ratchet lever hoist is overloaded, the stress link will break, signaling the operator to back off the load before the fiberglass handle breaks. The exclusive breakable stress link on the web strap ratchet lever hoist puts our reliable web strap operation above the rest! (*Stress Link Warning:* the Stress Link, next to the Overload Link, snaps when the hoist is seriously overloaded, warning the operator to back off the load before injury or damage. Replace a broken stress link IMMEDIATELY!! The Overload link has elongated holes that allow enough movement for the Stress Link to snap, while holding the handle socket assembly together, allowing the operator to back off the load.)

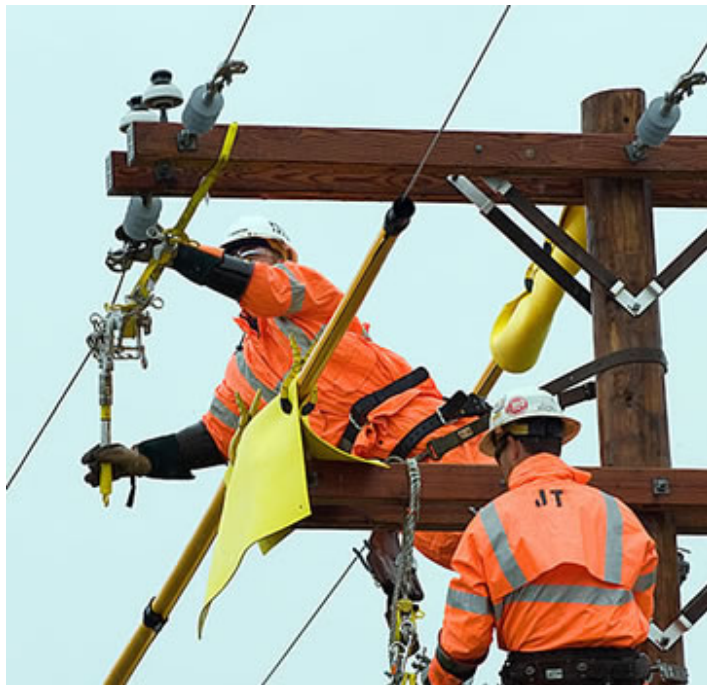
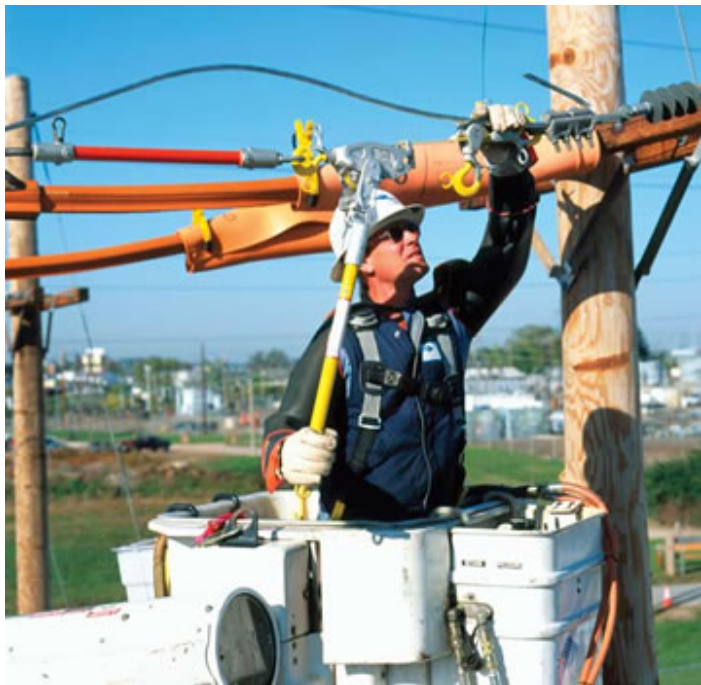


- **Double Locking Pawl System** - allows for no load brakes to slip or fowl on the lineman's puller. Positive load holding



in ALL environments.

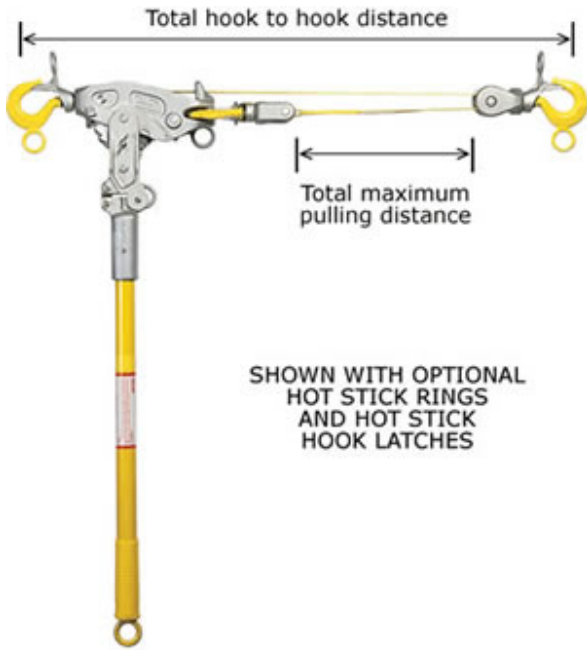
- **Double flanged drum** - prevents strap from coming into contact with the ratchet teeth
- **Latching Hooks** - 360° swivel capabilities. Forged steel hooks with latches on web strap ratchet lever hoists.
- **Open Frame Design** - Web strap ratchet lever hoists are lightweight and durable. The open frame design also allows for easy inspection and cleaning of your web strap ratchet lever hoists.
- **Self-lubricating Bearings** - throughout the entire web strap ratchet lever hoist housing and on the pulley ensure smooth operation
- **Wind-up Wheel** - allows for quick take up or positioning of slack webbing
- **Reversible nylon strap** - self storing on the web strap ratchet lever hoists



800-544-3137

## 1 and 1 1/2 TON CAPACITY SMALL FRAME

- Hot stick rings available
- Choice of hook styles (see bottom of page for hook styles)



## SMALL FRAME WEB STRAP MODEL SPECIFICATIONS

MODEL NUMBER	Single Line Capacity lb/metric†	Single Line Hook to Hook Distance		Double Line Capacity LB/metric†	Double Line Hook to Hook Distance		Total Maximum Pulling Distance		Handle Length	Weight Lb.
		Min	Max		Min	Max	Single	Double		
<b>1 Ton Capacity</b>										
<b>2 Latching Hooks</b>	1000/455	1'-8"	10'-9"	2000/909	2'-3"	6'-2"	9'-1"	3'-11"	30"	10.25
<b>2B Hot Stick Rings &amp; Latching Hooks</b>	1000/455	1'-8"	10'-9"	2000/909	2'-3"	6'-2"	9'-1"	3'-11"	30"	10.75
<b>2U Gate Type Hooks</b>	1000/455	1'-8"	10'-9"	2000/909	2'-3"	6'-2"	9'-1"	3'-11"	30"	12.5
<b>2UB Gate Type Hooks &amp; Hot Stick Rings</b>	1000/455	1'-8"	10'-9"	2000/909	2'-3"	6'-2"	9'-1"	3'-11"	30"	13
<b>2HB Hot Stick Rings &amp; Hook Latches</b>	1000/455	1'-8"	10'-9"	2000/909	2'-3"	6'-2"	9'-1"	3'-11"	30"	11.25
<b>1 ½ Ton Capacity</b>										
<b>25-A Latching Hooks</b>	1500/682	1'-11"	9'-1"	3000/1363	2'-1"	5'-4"	7'-2"	3'-3"	20"	10.25
<b>25-B Hot Stick Rings &amp; Latching Hooks</b>	1500/682	1'-11"	9'-1"	3000/1363	2'-1"	5'-4"	7'-2"	3'-3"	20"	10.25
<b>25-U Gate Type Hooks</b>	1500/682	1'-11"	9'-1"	3000/1363	2'-1"	5'-4"	7'-2"	3'-3"	20"	12
<b>25-UB Gate Type Hooks &amp; Hot Stick Rings</b>	1500/682	1'-11"	9'-1"	3000/1363	2'-1"	5'-4"	7'-2"	3'-3"	20"	12
<b>25-HB Hot Stick Rings &amp; Hook Latches</b>	1500/682	1'-11"	9'-1"	3000/1363	2'-1"	5'-4"	7'-2"	3'-3"	20"	10.25

†Metric Capacities shown are exact equivalents of U.S. Domestic Ratings

## Order Online, by Phone, or by E-Mail

Click a Model No.  
to add to cart

~ Add items to your online shopping cart ~  
**Click the Model No.** of the item you wish to purchase.

### PRICING FOR SMALL FRAME MODEL

Frame Size	Model No.	Weight (Lbs.)	Description	Price
<b>1 TON CAPACITY</b>				
SMALL	<b>2-A</b>	10 1/4	Latching hooks	<b>\$387.50</b>
	<b>2-B</b>	10 1/2	Hot Stick Rings and Latching Hooks	<b>\$425.00</b>
	<b>2-U</b>	10 3/4	Gate type hooks	<b>\$500.00</b>
	<b>2-UB</b>	11	Gate type hooks and hot stick rings	<b>\$537.50</b>
	<b>2-HB</b>	11	Hot Stick Rings and Latching Hooks	<b>\$537.50</b>
<b>1 1/2 TON CAPACITY</b>				
SMALL	<b>25-A</b>	10	Latching hooks	<b>\$368.75</b>
	<b>25-B</b>	10 1/2	Hot Stick Rings and Latching Hooks	<b>\$406.25</b>
	<b>25-U</b>	10 1/2	Gate type hooks	<b>\$481.25</b>
	<b>25-UB</b>	10 3/4	Gate type hooks and hot stick rings	<b>\$518.75</b>
	<b>25-HB</b>	11	Hot Stick Rings and Latching Hooks	<b>\$518.75</b>



#### 1 1/2 TON CAPACITY

#### MEDIUM FRAME

shown with standard latching hooks

- Hot stick rings available
- Choice of hook styles

800-544-3137





**2 TON CAPACITY**  
**MEDIUM FRAME**  
 shown with optional gate type hooks  
 • Hot stick rings available  
 • Choice of hook styles

(see bottom of page for hook styles)

<b>MEDIUM FRAME WEB STRAP HOIST</b>										
MODEL NUMBER	Single Line Capacity LB/metric†	Single Line Hook to Hook Distance		Double Line Capacity LB/metric†	Double Line Hook to Hook Distance		Total Maximum Pulling Distance		Handle Length	Weight Lb.
		Min	Max		Min	Max	Single	Double		
<b>1-1/2 Ton Capacity</b>										
3A Latching Hooks	1500/682	2'-1"	12'-9"	3000/1363	2'-6"	7'-5"	10'-8"	4'-11"	30"	13
3B Hot Stick Rings & Latching Hooks	1500/682	2'-1"	12'-9"	3000/1363	2'-6"	7'-5"	10'-8"	4'-11"	30"	13
3U Gate Type Hooks	1500/682	2'-1"	12'-9"	3000/1363	2'-6"	7'-5"	10'-8"	4'-11"	30"	14.75
3UB Gate Type Hooks & Hot Stick Rings	1500/682	2'-1"	12'-9"	3000/1363	2'-6"	7'-5"	10'-8"	4'-11"	30"	14.75
3HB Hot Stick Rings & Hook Latches	1500/682	2'-1"	12'-9"	3000/1363	2'-6"	7'-5"	10'-8"	4'-11"	30"	13
<b>MEDIUM FRAME WEB STRAP HOIST</b>										
<b>2 Ton Capacity</b>										
4A Latching Hooks	2000/900	2'-4"	10'-10"	4000/1818	2'-8"	6'-6"	8'-6"	3'-10"	36"	14.75
4B Hot Stick Rings & Latching Hooks	2000/900	2'-4"	10'-10"	4000/1818	2'-8"	6'-6"	8'-6"	3'-10"	36"	14.75

4U Gate Type Hooks	2000/900	2'-4"	10'-10"	4000/1818	2'-8"	6'-6"	8'-6"	3'-10"	36"	16.5
4UB Gate Type Hooks & Hot Stick Rings	2000/900	2'-4"	10'-10"	4000/1818	2'-8"	6'-6"	8'-6"	3'-10"	36"	16.5
4HB Hot Stick Rings & Hook Latches	2000/900	2'-4"	10'-10"	4000/1818	2'-8"	6'-6"	8'-6"	3'-10"	36"	14.75

† Metric capacities shown are exact equivalents of US Domestic Ratings.

800-544-3137

## Order Online, by Phone, or by E-Mail

~ Add items to your online shopping cart ~

**Click the Model No.** of the item you wish to purchase.

### PRICING FOR MEDIUM FRAME MODEL

Frame Size	Model No.	Weight (Lbs.)	Description	Price
<b>1 1/2 TON CAPACITY</b>				
MEDIUM	<a href="#">3-A</a>	14	Latching hooks	<b>\$443.75</b>
	<a href="#">3-B</a>	14 1/2	Hot Stick Rings and Latching Hooks	<b>\$481.25</b>
	<a href="#">3-U</a>	15	Gate type hooks	<b>\$575.00</b>
	<a href="#">3-UB</a>	15	Gate type hooks and hot stick rings	<b>\$612.50</b>
	<a href="#">3-HB</a>	15 1/4	Hot Stick Rings and Latching Hooks	<b>\$612.50</b>
<b>2 TON CAPACITY</b>				
MEDIUM	<a href="#">4-A</a>	15 1/2	Latching hooks	<b>\$468.75</b>
	<a href="#">4-B</a>	16	Hot Stick Rings and Latching Hooks	<b>\$506.25</b>
	<a href="#">4-U</a>	16	Gate type hooks	<b>\$600.00</b>
	<a href="#">4-UB</a>	16 1/2	Gate type hooks and hot stick rings	<b>\$637.50</b>
	<a href="#">4-HB</a>	16 1/4	Hot Stick Rings and Latching Hooks	<b>\$637.50</b>

### (NEW) PRICING FOR LIGHT MEDIUM FRAME MODEL

Frame Size	Model No.	Weight (Lbs.)	Description	Price
<b>1 1/2 TON CAPACITY</b>				
	<a href="#">35-A</a>	12 3/4	Latching hooks	<b>\$468.75</b>
	<a href="#">35-B</a>	13	Hot stick rings on all control surfaces with standard latches	<b>\$506.25</b>

LIGHTWEIGHT MEDIUM	<b>35-U</b>	13 1/4	Gate type hooks	<b>\$581.25</b>
	<b>35-UB</b>	13 1/4	Gate type hooks and hot stick rings	<b>\$618.75</b>
	<b>35-HB</b>	13 1/4	Hot stick rings on all control surfaces including hook latches	<b>\$618.75</b>
<b>2 TON CAPACITY</b>				
LIGHTWEIGHT MEDIUM	<b>40-A</b>	13 1/4	Latching hooks	<b>\$468.75</b>
	<b>40-B</b>	13 1/2	Hot stick rings on all control surfaces with standard latches	<b>\$506.25</b>
	<b>40-U</b>	13 3/4	Gate type hooks	<b>\$581.25</b>
	<b>40-UB</b>	13 3/4	Gate type hooks and hot stick rings	<b>\$618.75</b>
	<b>40-HB</b>	13 3/4	Hot stick rings on all control surfaces including hook latches	<b>\$618.75</b>

## CONVERTIBLE WEB STRAP PULLERS

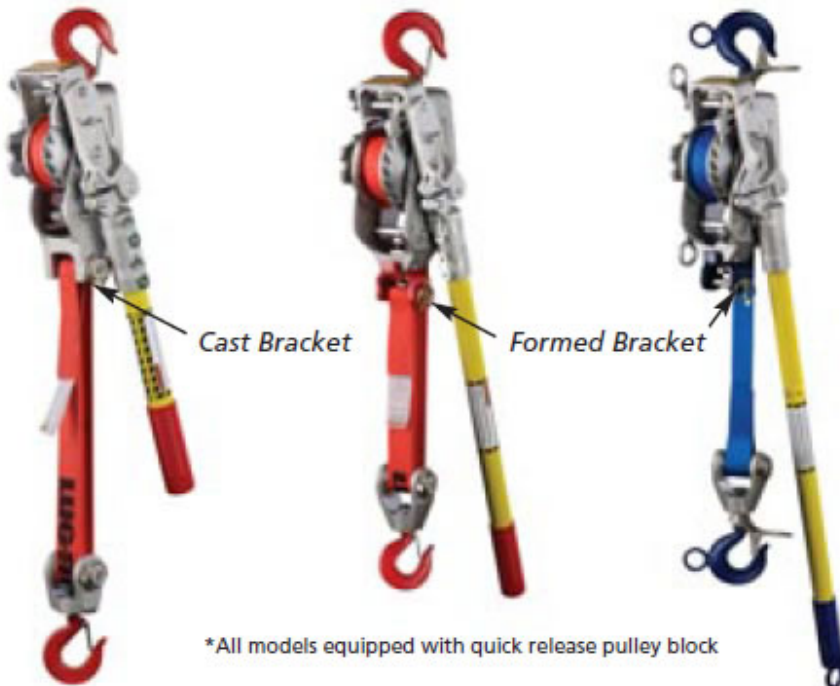
**All NEW Model**

1-1/2 Ton  
Small Frame  
Convertible

1-1/2 Ton  
Medium Frame  
with Convertible Kit

2 Ton  
Medium Frame  
with Convertible Kit

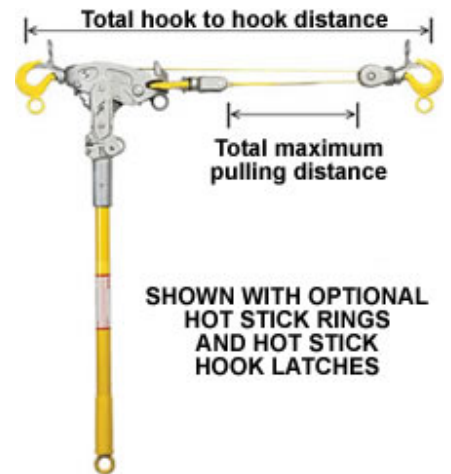
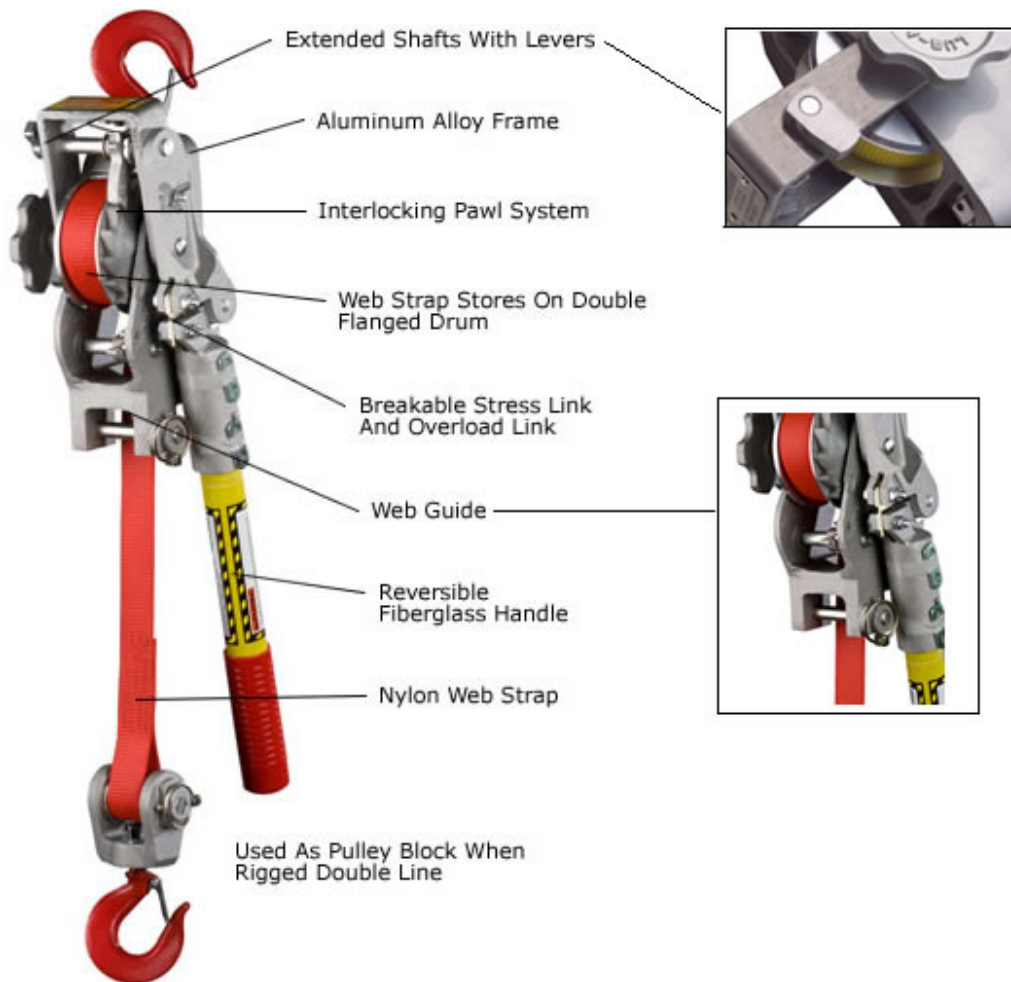
With Our new convertible web strap pullers, all the parts needed to switch from a double line to single line are on the hoist, lessening the possibility of misplacing or losing parts.



Lighter Weight  
and  
More Headroom  
on Medium Frame  
Convertible Models

- 5 Hook Styles** (see bottom of page)  
 A - Standard Latching Hooks  
 B - Hot Stick Rings and Latching Hooks  
 U - Gate Type Hooks  
 UB - Gate Type Hooks and Hot Stick Rings  
 HB - Hot Stick Rings and Hook Latches

\*Grips, straps, and hooks are color coded by capacity.



MODEL	CAPACITY	SINGLE PULL DISTANCE		DOUBLE PULL DISTANCE		STRAP LENGTH	HANDLE LENGTH
		Min.	Max.	Min.	Max.		
2-CA	1-1/2 Ton	20"	7'-2"	18"	3'-6"	8'	30"
2-CB	1-1/2 Ton	20"	7'-2"	18"	3'-6"	8'	32"
2-CU	1-1/2 Ton	22"	7'-2"	20"	3'-5"	8'	30"
2-CUB	1-1/2 Ton	22"	7'-2"	20"	3'-5"	8'	32"
2-CHB	1-1/2 Ton	22"	7'-2"	20"	3'-5"	8'	32"
3-CA	1-1/2 Ton	21"	11'-1"	21"	5'-4"	11'5"	30"
3-CB	1-1/2 Ton	21"	11'-1"	21"	4'-4"	11'5"	32"
3-CU	1-1/2 Ton	23"	11'-1"	23"	5'-3"	11'5"	30"
3-CUB	1-1/2 Ton	23"	11'-1"	23"	5'-3"	11'5"	32"
3-CHB	1-1/2 Ton	23"	11'-1"	23"	5'-3"	11'5"	32"
4-CA	2 Ton	21"	9'-2"	21"	4'-5"	10'	36"
4-CB	2 Ton	21"	9'-2"	21"	4'-5"	10'	38"



<b>4-CU</b>	2 Ton	23"	9'-2"	23"	4'-4"	10'	36"
<b>4-CUB</b>	2 Ton	23"	9'-2"	23"	4'-4"	10'	38"
<b>4-CHB</b>	2 Ton	23"	9'-2"	23"	4'-4"	10'	38"



The Convertible Web Strap Puller can go from a single rigged to a double rigged capacity quickly and easily with NO extra parts to misplace.

← **SINGLE**

**DOUBLE** →

NOTE: Hoist must be double rigged to reach its full capacity



800-544-3137

### Order Online, by Phone, or by E-Mail

~ Add items to your online shopping cart ~

**Click the Model No.** of the item you wish to purchase.

## PRICING FOR THE CONVERTIBLE SMALL FRAME MODEL

Frame Size	Model No.	Weight (Lbs.)	Description	Price
<b>1 1/2 TON CAPACITY</b>				
SMALL	<b>2-CA</b>	10	Latching hooks	<b>\$400.00</b>
	<b>2-CB</b>	10 1/4	Hot stick rings on all control surfaces with standard latches	<b>\$437.50</b>
	<b>2-CU</b>	10 1/4	Gate type hooks	<b>\$512.50</b>
	<b>2-CUB</b>	10 3/4	Gate type hooks and hot stick rings	<b>\$550.00</b>
	<b>2-CHB</b>	10 3/4	Hot stick rings on all control surfaces including hook latches	<b>\$550.00</b>

## PRICING FOR THE CONVERTIBLE LIGHT MED. & MEDIUM FRAME MODEL

Frame Size	Model No.	Weight (Lbs.)	Description	Price
<b>1 1/2 TON CAPACITY</b>				

LIGHTWEIGHT MEDIUM	<b>35-CA</b>	12	Latching hooks	<b>\$431.25</b>	
	<b>35-CB</b>	12 1/4	Hot stick rings on all control surfaces with standard latches	<b>\$468.75</b>	
	<b>35-CU</b>	12 1/2	Gate type hooks	<b>\$543.75</b>	
	<b>35-CUB</b>	12 1/2	Gate type hooks and hot stick rings	<b>\$581.25</b>	
	<b>35-CHB</b>	12 1/2	Hot stick rings on all control surfaces including hook latches	<b>\$581.25</b>	
	<b>2 TON CAPACITY</b>				
	<b>40-CA</b>	12 1/2	Latching hooks	<b>\$431.25</b>	
	<b>40-CB</b>	12 3/4	Hot stick rings on all control surfaces with standard latches	<b>\$468.75</b>	
	<b>40-CU</b>	13	Gate type hooks	<b>\$543.75</b>	
	<b>40-CUB</b>	13	Gate type hooks and hot stick rings	<b>\$581.25</b>	
<b>40-CHB</b>	13	Hot stick rings on all control surfaces including hook latches	<b>\$581.25</b>		
MEDIUM	<b>1 1/2 TON CAPACITY</b>				
	<b>3-CA</b>	13 3/4	Latching hooks	<b>\$428.75</b>	
	<b>3-CB</b>	13 1/2	Hot stick rings on all control surfaces with standard latches	<b>\$466.25</b>	
	<b>3-CU</b>	13 3/4	Gate type hooks	<b>\$560.00</b>	
	<b>3-CUB</b>	14	Gate type hooks and hot stick rings	<b>\$597.50</b>	
	<b>3-CHB</b>	14	Hot stick rings on all control surfaces including hook latches	<b>\$597.50</b>	
	<b>2 TON CAPACITY</b>				
	<b>4-CA</b>	14 1/2	Latching hooks	<b>\$431.25</b>	
	<b>4-CB</b>	14 3/4	Hot stick rings on all control surfaces with standard latches	<b>\$468.75</b>	
	<b>4-CU</b>	15	Gate type hooks	<b>\$562.50</b>	
	<b>4-CUB</b>	15	Gate type hooks and hot stick rings	<b>\$600.00</b>	
	<b>4-CHB</b>	15	Hot stick rings on all control surfaces including hook latches	<b>\$600.00</b>	

**THE RIGHT HOOK FOR ANY APPLICATION**

## THE RIGHT HOOK FOR ANY APPLICATION



### (A) - Standard Latching Hook

Forged alloy steel hooks for lasting strength and durability. Latches are standard.



### (U) - Swivel Gate Hook

Hook latch revolves on hook shank and locks under spring tension in open or closed position.



### (B) - Hot Stick Ring with Standard Latching Hook

Hot stick hooks have a welded 1-inch diameter ring and standard latches for use with approved hot stick tools.



### (UB) - Swivel Gate Hook with Hot Stick Ring

Offers the same revolving and locking hook shank features as our standard swivel gate, but incorporates a 1-inch diameter welded hot stick ring.



### (HB) - Hot Stick Ring with Hot Stick Hook Latch

Hot stick hook latch models have rings on the hook and latch for use on energized lines. Using holding sticks, the latch and hook can be easily maneuvered.

All standard kits include a lynch pin and shaft, convertible bracket, and hex bolt assembly. All pulley blocks supplied after 9/08 are convertible. Hoists purchased prior to 9/08 may require a new pulley block or web strap and they can be purchased separately from our sales department.



Lug-All, Web Strap Ratchet Lever Hoists, Hand Operated Hoists, Ratchet Hoists, Web Strap Puller, Web Strap Winch, Web Strap Come-Alongs, Breakable Stress Link, Web Guide, and Wind up Wheel from your source for material handling equipment.

[Back to Product Category](#)

[Home](#) - [Order](#) - [Search](#) - [Quote](#) - [Info](#) - [About Us](#) - [My Account](#) - [Shopping Cart](#)

800-544-3137