



Pole Line Hardware



August 2018



Table of Contents

Introduction 4

Tangent Suspension Single Conductor (220-240kV)..... 5

Tangent Suspension Single Conductor V-String (220-240kV) 6

EHV Tangent Suspension Double Conductor (330-345kV) 7

Ball Y-Clevis 8

Ball Y-Clevis - Hot Line 9

Ball Clevis10

Ball Clevis - Hotline11

Oval Ball Eye12

Ball Eye - Hotline13

Clevis Eye14

Y-Clevis Eye15

Socket Eye.....16

Clevis-Clevis17

Clevis-Clevis: Rotated.....19

Thimble Clevis20

Socket Clevis22

Socket Y-Clevis.....23

Socket-Clevis Extended24

Socket-Clevis Hot Line.....25

Shackle-Anchor.....26

Shackle-Chain.....27

Shackle-Twisted.....28

Chain Link.....29

Strain Link.....30

Curved Base Dead-End Tee31

Vari-Grip™ Dead End32

Compression Dead-end Jumper Assembly33

Yoke Plates.....34

Bolt: Shoulder Eye38

Bolt: Oval Eye40

Bolt: Ball Link Y-Eye42

U-Bolt Assemblies.....44

Square Washers: Plate and Curved46

Preformed Line Products (Canada) Limited

Visit our website at: www.preformed.ca Email: sales@preformed.ca
1711 Bishop Street North, Cambridge, Ontario, Canada, N1T 1N5
Phone: 519-740-6666 Fax: 519-740-7917



PREFORMED LINE PRODUCTS

Eye Nut.....	47
Twin Grip Suspension.....	48
Suspension Plate.....	49
Suspension Plate Flat.....	50
Sag Adjustment Assembly.....	51
Flexible Ground Wire Assemblies.....	53
Extension Link.....	54
Extension Strap.....	55
Extension Straps with Anchor Shackle(s).....	57
Eye-Eye Link.....	58
Turnbuckles.....	59
Tie Top Neutral Wire Bracket.....	60
Bolted Neutral Wire Bracket with Clamp.....	61
Clamp: Cable Suspension.....	62
Guy Hook.....	63
Strain Plate.....	64
Pole Guard.....	65
Standoff Bracket.....	66
Guying Plate.....	68
Straight Crossarm Insulator pin.....	69

Preformed Line Products (Canada) Limited

Visit our website at: www.preformed.ca Email: sales@preformed.ca
1711 Bishop Street North, Cambridge, Ontario, Canada, N1T 1N5
Phone: 519-740-6666 Fax: 519-740-7917

Introduction

Welcome!

This catalog includes our offering of:

- Charpy rated parts per CSA C83
 - Charpy Level 1: Minimum energy absorption of 20 Joules at -20°C
 - Charpy Level 2: Minimum 50% shear fracture at -45 °C
- Fittings made with alternate materials

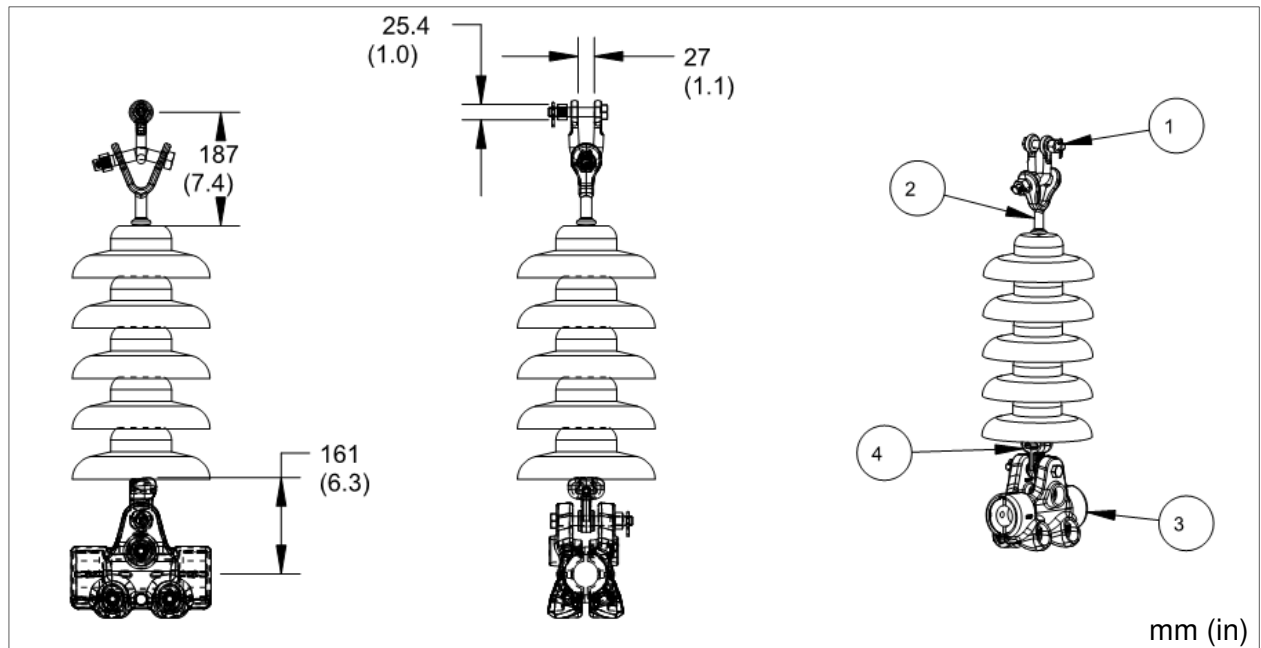
Galvanized parts are hot dip galvanized per CSA G164 (latest issue). Dimensions are given as final after galvanizing.

Reference CSA C83 appendix G2 for strength rating definitions.

We can design custom yoke plates of various shapes, sizes, strengths, thicknesses and hole spacing. We can also work with your hardware string set designs and provide an arrangement using PLP hardware. Contact PLP Canada for details.

Tangent Suspension Single Conductor (220-240kV)

Note: Insulators are not included



Item	Description	Part Number	Quantity
1	Anchor Shackle	AS-133C (see page 27 for reference)	1
2	Ball Y-Clevis	BYC-120C (see page 8 for reference)	1
3	Cushion Grip Suspension	CGS-XXXXC (refer to Energy catalog)	1
4	Socket Eye	SE-5154C (see page 16 for reference)	1

Catalog Number	Aluminum-Based Conductor Range mm (in)
H-1410068	7.9-50.8 (0.312-2.001)

Please specify your conductor size when you place your order.

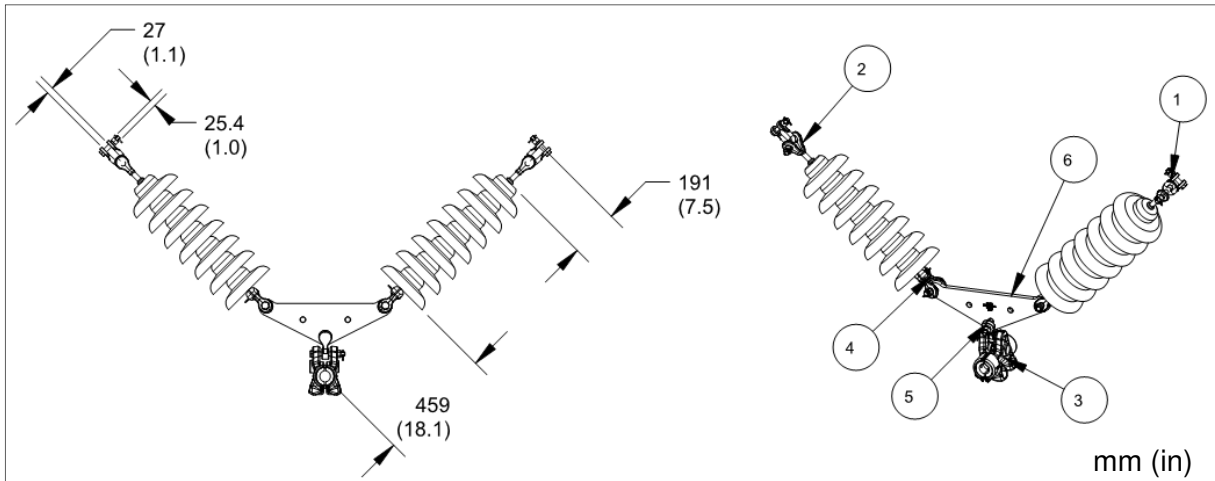
Meets CSA C83 requirements for energy absorption/toughness

All parts meet Charpy Level 1 specifications
(For Charpy Level specifications, see page 4)

Preformed Line Products (Canada) Limited
 Visit our website at: www.preformed.ca Email: sales@preformed.ca
 1711 Bishop Street North, Cambridge, Ontario, Canada, N1T 1N5
 Phone: 519-740-6666 Fax: 519-740-7917

Tangent Suspension Single Conductor V-String (220-240kV)

Note: Insulators are not included



Item	Description	Part Number	Quantity
1	Anchor Shackle	AS-133C (see page 27 for reference)	2
2	Ball Y-Clevis	BYC-120C (see page 8 for reference)	2
3	Cushion Grip Suspension	CGS-XXXXC (refer to Energy catalog)	1
4	Socket Y-Clevis	SYC-120C (see page 23 for reference)	2
5	Y-Clevis	YC-5209C (see page 15 for reference)	1
6	Yoke Plate	YP-5908CHD (see page 37 for reference)	1

Catalog Number	Aluminum-Based Conductor Range mm (in)
H-1410069	7.9-50.8 (0.312-2.001)

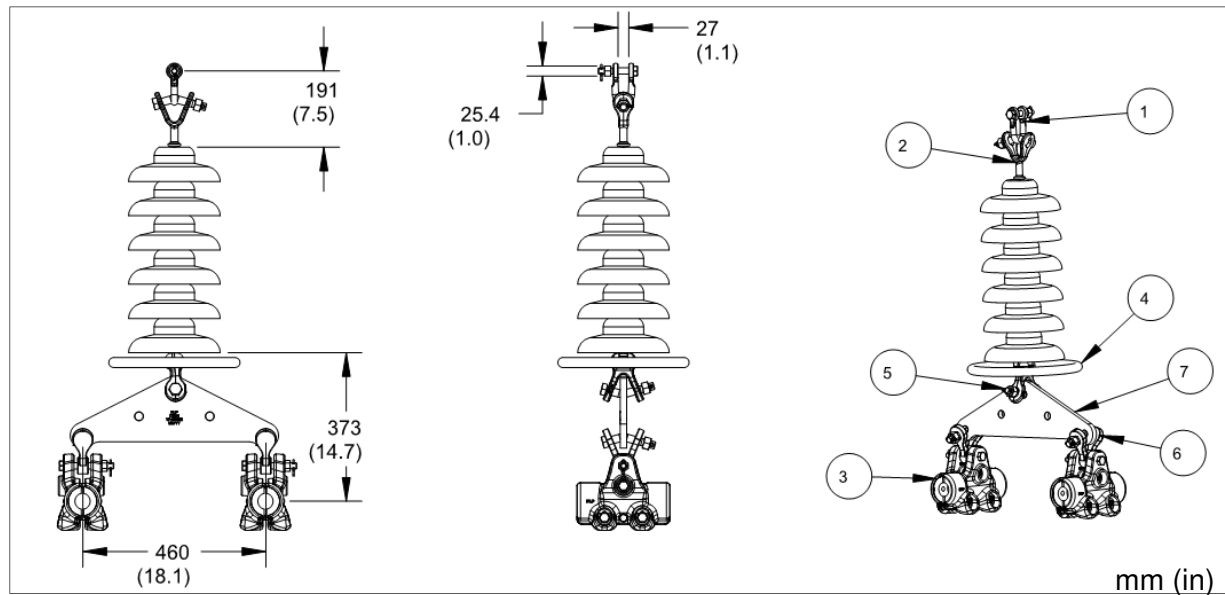
Please specify your conductor size when you place your order.

Meets CSA C83 requirements for energy absorption/toughness

All parts meet Charpy Level 1 specifications
(For Charpy Level specifications, see page 4)

EHV Tangent Suspension Double Conductor (330-345kV)

Note: Insulators are not included



Item	Description	Part Number	Quantity
1	Anchor Shackle	AS-133C (see page 26 for reference)	1
2	Ball Y-Clevis	BYC-120C (see page 8 for reference)	1
3	Cushion Grip Suspension	CGS-XXXXC (refer to Energy catalog)	2
4	Corona Ring	CORONA-RING-TBD1	1
5	Socket Y-Clevis	SYC-120C (see page 23 for reference)	1
6	Y-Clevis	YC-5209C (see page 14 for reference)	2
7	Yoke Plate	YP-5908C (see page 38 for reference)	1

Catalog Number	Aluminum-Based Conductor Range mm (in)
H-1410070	39.2-50.8 (1.546-2.001)

Please specify your conductor size when you place your order.

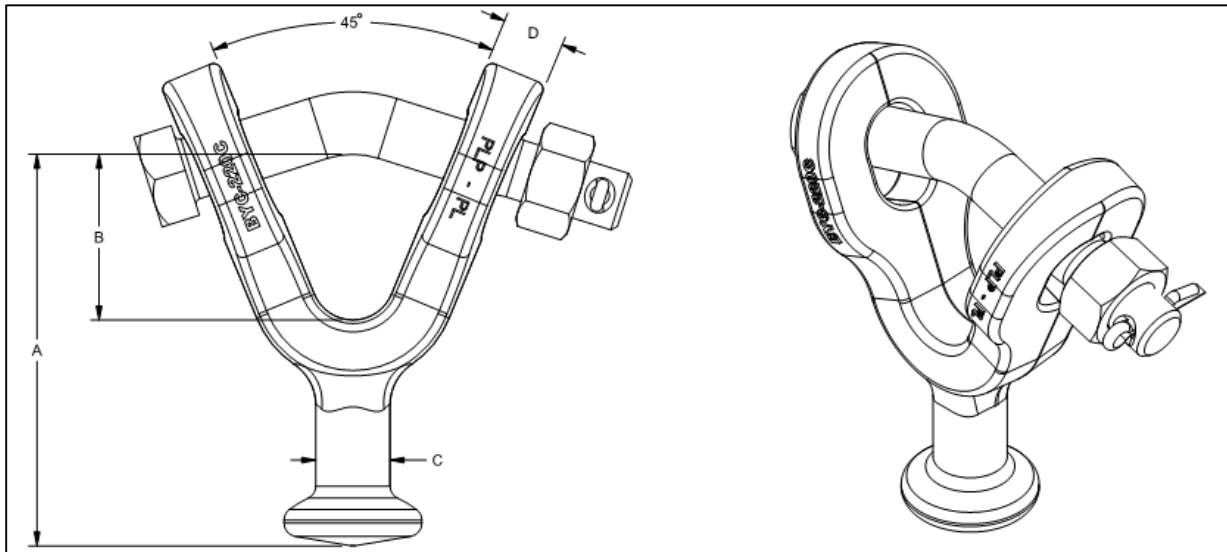
Meets CSA C83 requirements for energy absorption/toughness

All parts meet Charpy Level 1 specifications
(For Charpy Level specifications, see page 4)

Preformed Line Products (Canada) Limited
 Visit our website at: www.preformed.ca Email: sales@preformed.ca
 1711 Bishop Street North, Cambridge, Ontario, Canada, N1T 1N5
 Phone: 519-740-6666 Fax: 519-740-7917

Ball Y-Clevis

Ball Y-Clevis fittings are used to attach ball and socket insulators to associated hardware within an insulator string. The bent bolt on the Y section allows for additional articulation within the assembly.



Catalog Number	A mm (in)	B mm (in)	C mm (in)	D mm (in)	ANSI Class	CSA Standard	Bolt Ø in	Rated Strength kN (lbs)	Ultimate Strength kN (lbs)	Estimated Assembly Weight kg (lbs)
BYC-120C	111 (4.4)	48 (1.9)	18.5 (0.7)	11 (0.4)	52-3 52-5	CS-3 CS-5	3/4	120 (26,900)	138 (31,000)	1.0 (2.2)
BYC-220C	119 (4.7)	50 (2.0)	23 (0.9)	19 (0.7)	52-8 52-11	CS-8 CS-11	3/4	220kN (50,000)	253 (56,800)	2.7 (6.0)

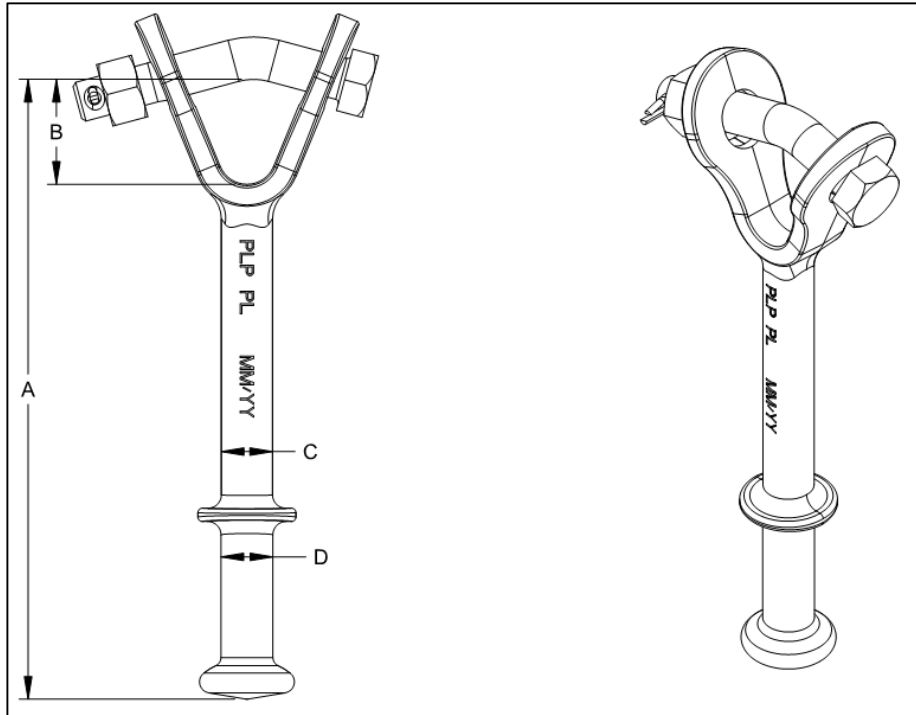
Meets CSA C83 requirements for energy absorption/toughness.

BYC-XXXC meets Charpy Level 1 specifications
 Add -L2 suffix (BYC-XXXC-L2) for parts which meet
 Charpy Level 2 specifications
 (For Charpy Level specifications, see page 4)

Component	Material
Body	Forged Galvanized Steel
Bolt	Galvanized Steel
Cotter Pin	Stainless Steel

Ball Y-Clevis - Hot Line

Hot line Ball Y-Clevises are used to attach ball and socket insulators to other associated hardware within an insulator string. Shoulders are provided to accommodate hot line tools and the bent bolt in the Y-section provides an additional point of articulation within an assembly.



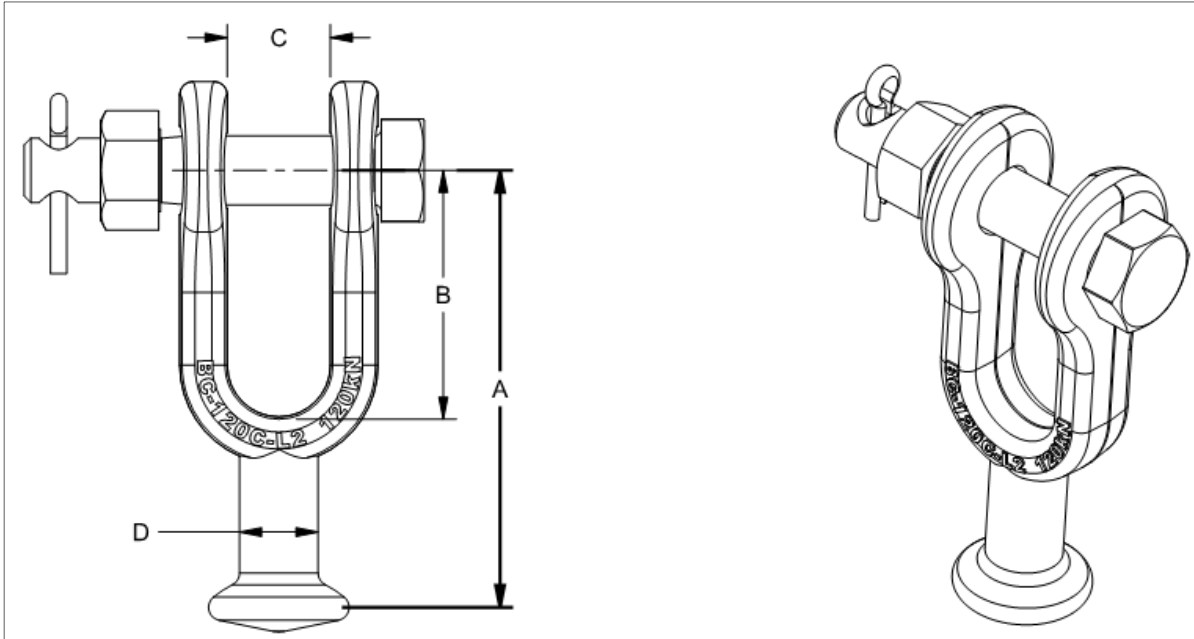
Catalog Number	A mm (in)	B mm (in)	C mm (in)	D mm (in)	ANSI Class	CSA Standard	Bolt ∅ in	Rated Strength kN (lbs)	Ultimate Strength kN (lbs)	Estimated Assembly Weight kg (lbs)
HLBYC-120C	276 (10.8)	47 (1.9)	23 (0.9)	19 (0.7)	52-3 52-5	CS-3 CS-5	3/4	120 (26,900)	138 (31,000)	1.5 (3.3)
HLBYC-220C	278 (10.9)	47 (1.9)	23 (0.9)	23 (0.9)	52-8 52-11	CS-8 CS-11	3/4	220 (50,000)	253 (56,800)	1.7 (3.8)

Meets CSA C83 requirements for energy absorption / toughness.

HLBYC-XXXC meets Charpy Level 1 specifications
Add -L2 suffix (HLBYC-XXXC-L2) for parts which meet Charpy Level 2 specifications
(For Charpy Level specifications, see page 4)

Component	Material
Body	Forged Galvanized Steel
Bolt	Galvanized Steel
Cotter Pin	Stainless Steel

Ball Clevis



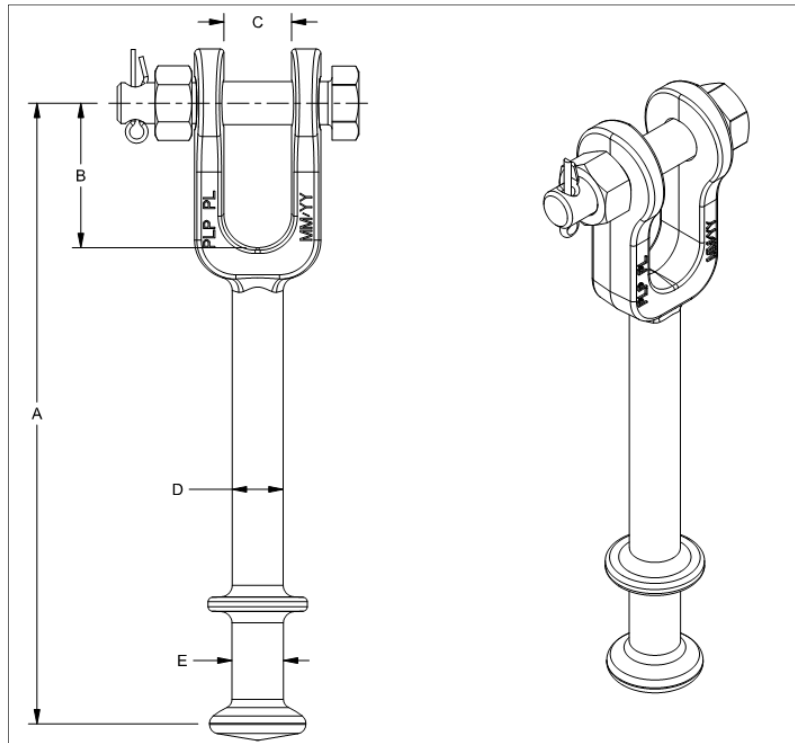
Catalog Number	A mm (in)	B mm (in)	C mm (in)	D mm (in)	ANSI Class	CSA Standard	Bolt \varnothing in	Rated Strength kN (lbs)	Ultimate Strength kN (lbs)	Estimated Assembly Weight kg (lbs)
BC-120C	101 (4.0)	57 (2.2)	27 (1.1)	18 (0.7)	52-5	CS-5	5/8	120 (26,900)	138 (31,000)	1.0 (2.3)
BC-220C	119 (4.7)	49 (1.9)	24 (0.9)	22.6 (0.9)	52-11	CS-11	3/4	220kN (50,000)	253 (56,800)	1.8 (4.0)

Meets CSA C83 requirements for energy absorption/toughness.

BC-XXXC meets Charpy Level 1 specifications
 Add -L2 suffix (BC-XXXC-L2) for parts which meet Charpy Level 2 specifications
 (For Charpy Level specifications, see page 4)

Component	Material
Body	Forged Galvanized Steel
Bolt	Galvanized Steel
Cotter Pin	Stainless Steel

Ball Clevis - Hotline



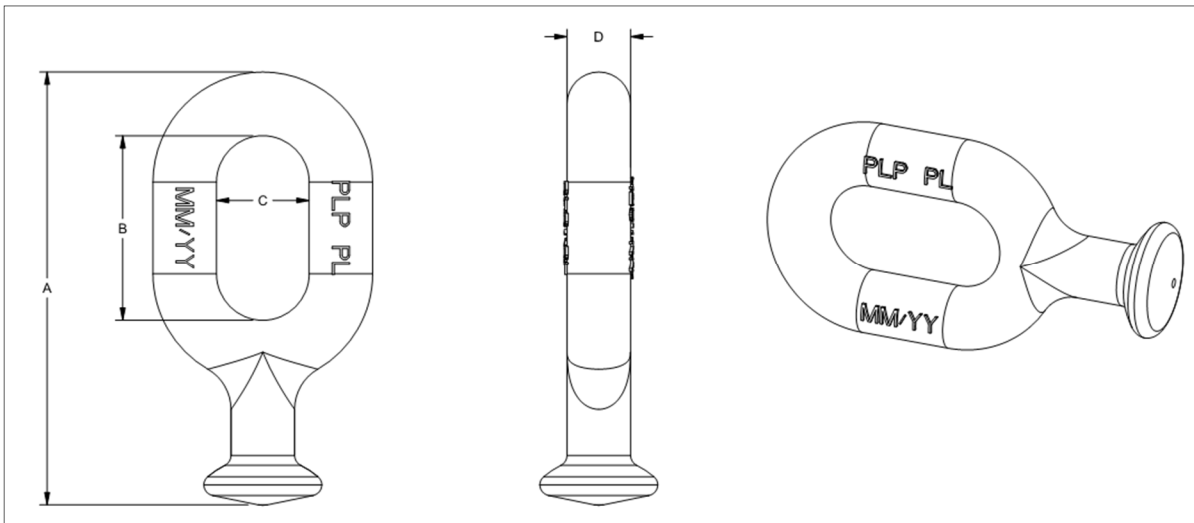
Catalog Number	A mm (in)	B mm (in)	C mm (in)	D mm (in)	E mm (in)	ANSI Class	CSA Ball Standard	Bolt Ø in	Rated Strength kN (lbs)	Ultimate Strength kN (lbs)	Estimated Assembly Weight kg (lbs)
HLBC-120C	261 (10.3)	58 (2.3)	27 (1.1)	22.5 (0.9)	18.5 (0.7)	52-5	CS-5	5/8	120 (26,900)	138 (31,000)	1.2 (2.7)
HLBC-220C	275 (10.8)	64 (2.5)	30 (1.2)	22.6 (0.9)	22.8 (0.9)	52-8 52-11	CS-8 CS-11	3/4	220 (50,000)	253 (56,800)	1.6 (3.5)

Meets CSA C83 requirements for energy absorption/toughness.

HLBC-XXXC meets Charpy Level 1 specifications
 Add -L2 suffix (HLBC-XXXC-L2) for parts which meet
 Charpy Level 2 specifications
 (For Charpy Level specifications, see page 4)

Component	Material
Body	Forged Galvanized Steel
Bolt	Galvanized Steel
Cotter Pin	Stainless Steel

Oval Ball Eye



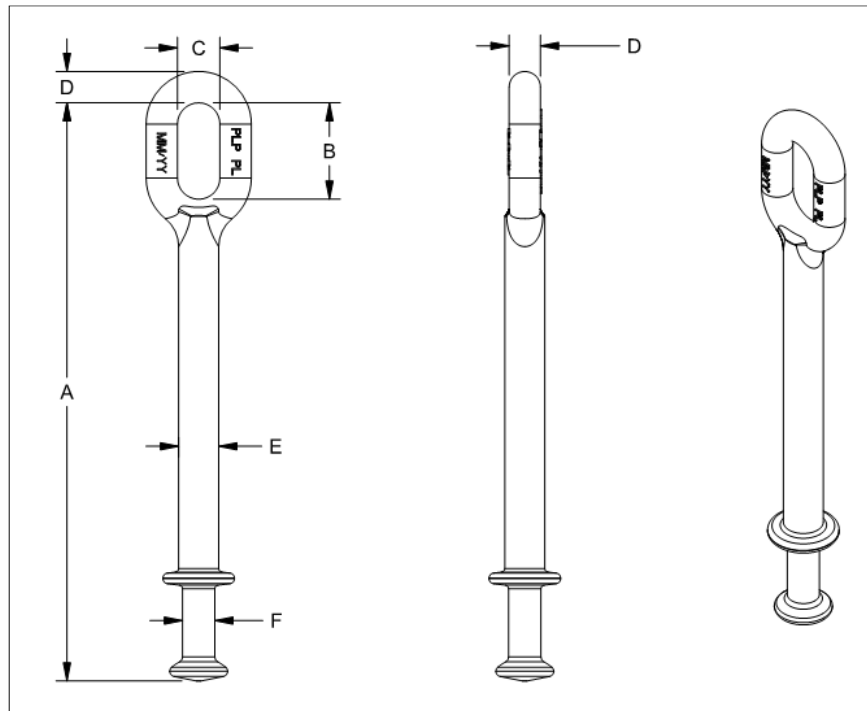
Catalog Number	A mm (in)	B mm (in)	C mm (in)	D mm (in)	ANSI Class	CSA Standard	Rated Strength kN (lbs)	Ultimate Strength kN (lbs)	Estimated Part Weight kg (lbs)
OBE-120C	119 (4.7)	51 (2.0)	25 (1.0)	18 (0.7)	52-5	CS-5	120 (26,900)	138 (31,000)	0.5 (1.0)

Meets CSA C83 requirements for energy absorption/toughness.

OBE-XXXC meets Charpy Level 1 specifications
 Add -L2 suffix (OBE-XXXC-L2) for parts which meet
 Charpy Level 2 specifications
 (For Charpy Level specifications, see page 4)

Component	Material
Body	Forged Galvanized Steel

Ball Eye - Hotline



HLBE-XXX-XXC

STRENGTH RATING (kN) LENGTH L (in)

Catalog Number	A mm (in)	B mm (in)	C mm (in)	D mm (in)	E mm (in)	F mm (in)	ANSI Class	CSA Standard	Rated Strength kN (lbs)	Ultimate Strength kN (lbs)	Estimated Part Weight kg (lbs)
HLBE-120-12C	305 (12)	51 (2.0)	25 (1.0)	18 (0.7)	23 (0.9)	18 (0.7)	52-5	CS-5	120 (26,900)	138 (31,000)	1.0 (2.3)

Meets CSA C83 requirements for energy absorption/toughness.

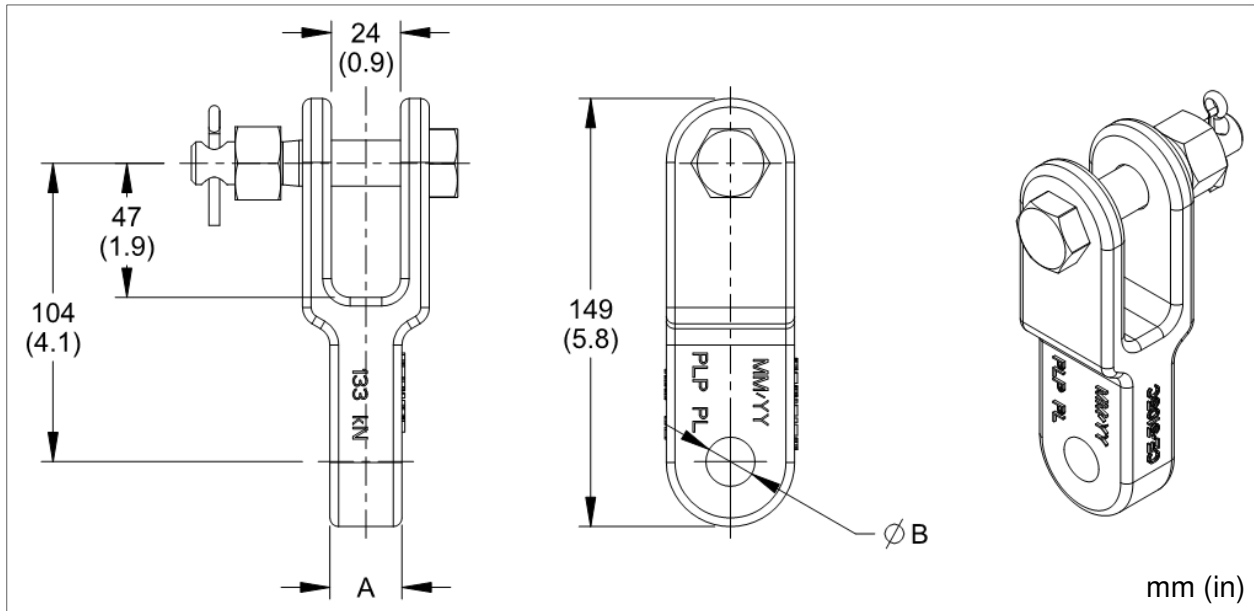
HLBE-XXXC meets Charpy Level 1 specifications
 Add -L2 suffix (HLBE-XXXC-L2) for parts which meet Charpy Level 2 specifications
 (For Charpy Level specifications, see page 4)

Component	Material
Body	Forged Galvanized Steel

Preformed Line Products (Canada) Limited
 Visit our website at: www.preformed.ca Email: sales@preformed.ca
 1711 Bishop Street North, Cambridge, Ontario, Canada, N1T 1N5
 Phone: 519-740-6666 Fax: 519-740-7917

Clevis Eye

Clevis eyes are used to attach clamps to yoke plates and clevis tongue insulators.



Catalog Number	A mm (in)	B mm (in)	Bolt \varnothing in	Rated Strength kN (lbs)	Ultimate Strength kN (lbs)	Assembly Weight kg (lbs)
CE-5105C	25 (1.0)	21 (0.8)	5/8	133 (30,000)	153 (34,400)	1.3 (2.9)
CE-5259C	13 (0.5)	17 (0.7)	5/8	120 (26,900)	138 (31,000)	1.1 (2.4)
CE-5261C	19 (0.75)	17 (0.7)	5/8	120 (26,900)	138 (31,000)	1.2 (2.6)

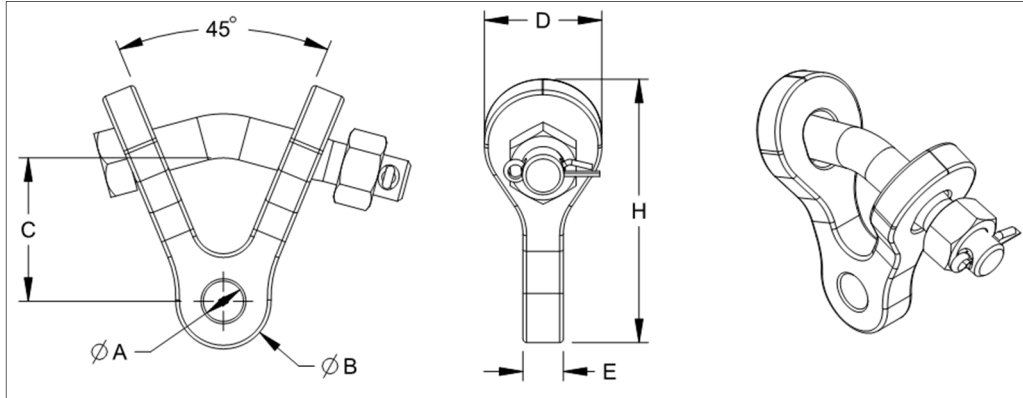
Meets CSA C83 requirements for energy absorption/toughness.

CE-XXXXC meets Charpy Level 1 specifications
 Add -L2 suffix (CE-XXXXC-L2) for parts which meet Charpy Level 2 specifications
 (For Charpy Level specifications, see page 4)

Component	Material
Body	Forged Galvanized Steel
Bolt	Galvanized Steel
Cotter Pin	Stainless Steel

Y-Clevis Eye

Y-Clevis Eyes are used primarily to attach clamps to Tower Pads and Yoke Plates.



Catalog Number	A mm (in)	B mm (in)	C mm (in)	D mm (in)	E mm (in)	H mm (in)	Bolt Ø in	Rated Strength kN (lbs)	Ultimate Strength kN (lbs)	Estimated Assembly Weight kg (lbs)
YC-5206C	18 (0.7)	41 (1.6)	62 (2.4)	51 (2.0)	15 (0.6)	114 (4.5)	3/4	120 (26,900)	138 (31,000)	2.0 (4.5)
YC-5207C	18 (0.7)	41 (1.6)	61 (2.4)	51 (2.0)	18 (0.7)	114 (4.5)	3/4	120 (26,900)	138 (31,000)	1.1 (2.5)
YC-5209C	21 (0.8)	41 (1.6)	61 (2.4)	51 (2.0)	27 (1.1)	114 (4.5)	3/4	120 (26,900)	138 (31,000)	2.1 (4.6)

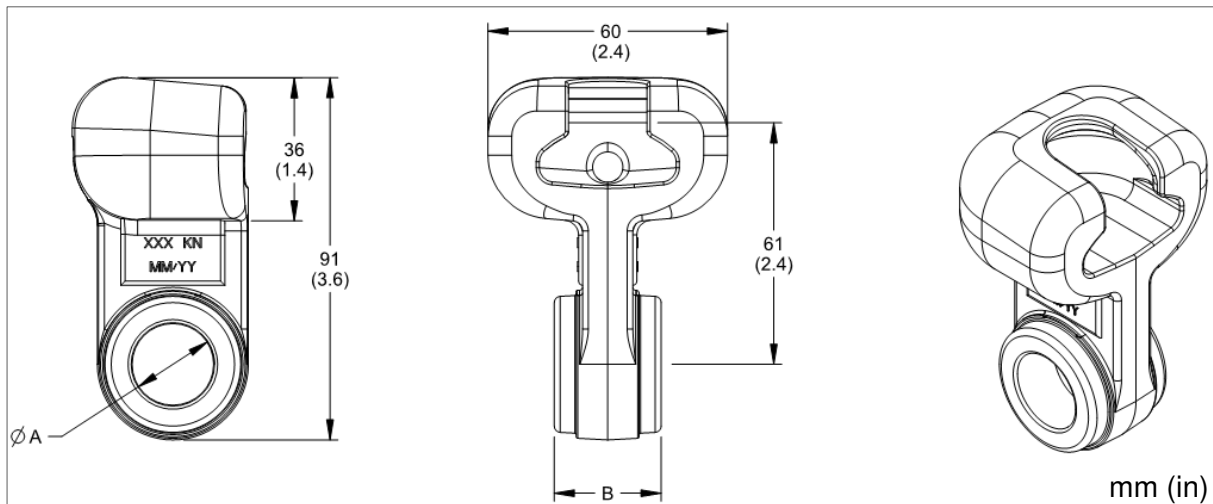
Meets CSA C83 requirements for energy absorption/toughness.

YC-52XXC meets Charpy Level 1 specifications
 Add -L2 suffix (YC-52XXC-L2) for parts which meet
 Charpy Level 2 specifications
 (For Charpy Level specifications, see page 4)

Component	Material
Body	Forged Galvanized Steel
Bolt	Galvanized Steel
Cotter Pin	Stainless Steel

Socket Eye

Socket Eyes are designed to be used with Suspension and Dead End Clamps.



Catalog Number	A mm (in)	B mm (in)	ANSI Class	CSA Standard	Rated Strength kN (lbs)	Ultimate Strength kN (lbs)	Estimated Part Weight kg (lbs)
SE-5150C	18 (0.7)	13 (0.5)	52-3 52-5	CS-5	120 (26,900)	138 (31,000)	0.6 (1.3)
SE-5152C	18 (0.7)	19 (0.8)	52-3 52-5	CS-5	120 (26,900)	138 (31,000)	0.6 (1.4)
SE-5154C	18 (0.7)	27 (1.1)	52-3 52-5	CS-5	120 (26,900)	138 (31,000)	0.7 (1.5)
SE-5154C-75	21 (0.8)	27 (1.1)	52-3 52-5	CS-5	120 (26,900)	138 (31,000)	0.6 (1.3)
SE-5155C	21 (0.8)	54 (2.1)	52-3 52-5	CS-5	120 (26,900)	138 (31,000)	0.7 (1.5)

Meets CSA C83 requirements for energy absorption/toughness.

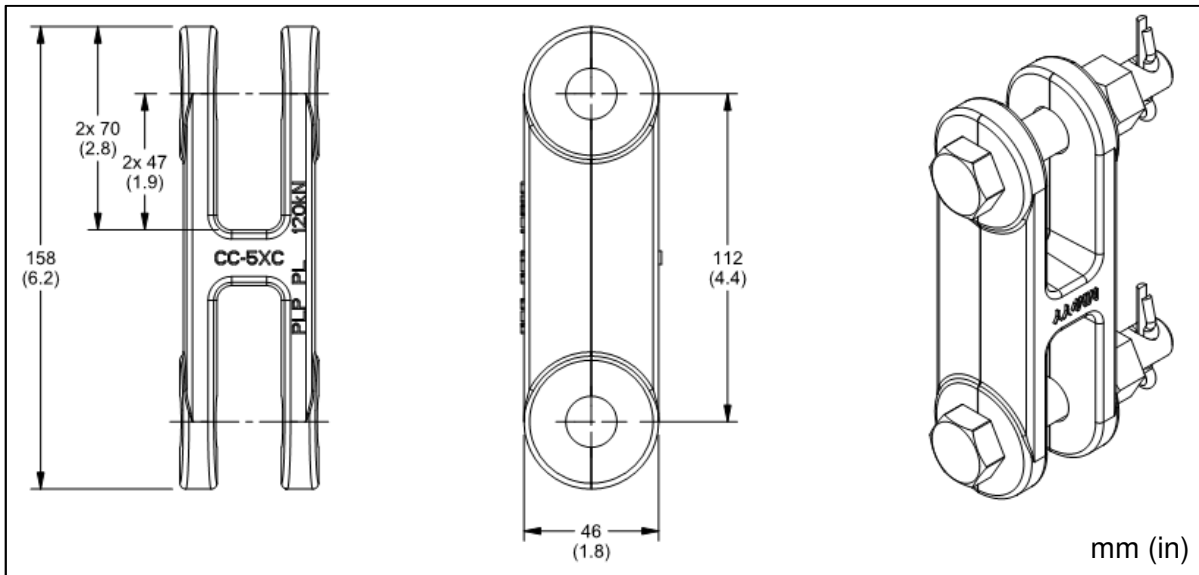
SE-51XXC meets Charpy Level 1 specifications
 Add -L2 suffix (SE-51XXC-L2) for parts which meet
 Charpy Level 2 specifications
 (For Charpy Level specifications, see page 4)

Component	Material
Body	Forged Galvanized Steel

Clevis-Clevis

Clevis-Clevis fittings are generally used to attach clevis tongue insulators to associated hardware in an insulator string.

CC-5XC

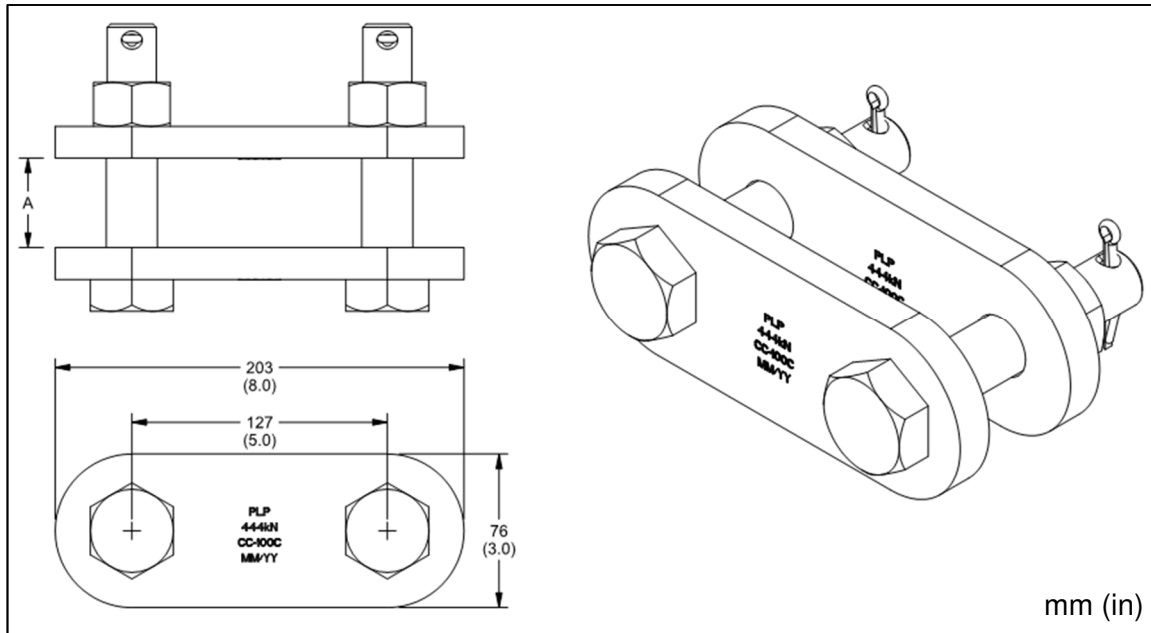


Catalog Number	Bolt \varnothing in	Rated Strength kN (lbs)	Ultimate Strength kN (lbs)	Estimated Assembly Weight kg (lbs)
CC-55C	3/4	120 (26,900)	138 (31,000)	1.9 (4.1)
CC-56C	5/8	120 (26,900)	138 (31,000)	1.2 (2.5)

Meets CSA C83 requirements for energy absorption/toughness.

CC-5XC meets Charpy Level 1 specifications
Add -L2 suffix (CC-XXXX-L2) for parts which meet Charpy Level 2 specifications
(For Charpy Level specifications, see page 4)

Component	Material
Body	Forged Galvanized Steel
Bolt	Galvanized Steel
Cotter Pin	Stainless Steel

CC-100C


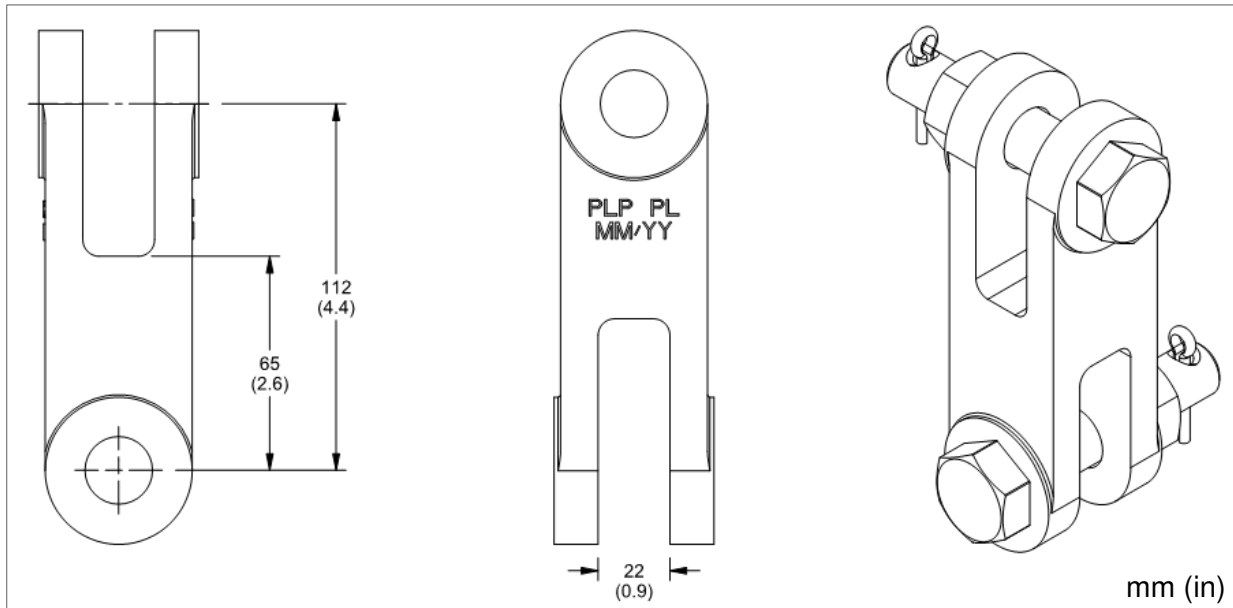
Catalog Number	A mm (in)	Bolt \varnothing in	Rated Strength kN (lbs)	Ultimate Strength kN (lbs)	Estimated Assembly Weight kg (lbs)
CC-100C	45 (1.8)	1	377 (85,000)	444 (100,000)	4.1 (9.0)

Meets CSA C83 requirements for energy absorption/toughness.

CC-XXXX meets Charpy Level 1 specifications
 Add -L2 suffix (CC-XXXX-L2) for parts which meet
 Charpy Level 2 specifications
 (For Charpy Level specifications, see page 4)

Component	Material
Body	Forged Galvanized Steel
Bolt	Galvanized Steel
Cotter Pin	Stainless Steel

Clevis-Clevis: Rotated



Catalog Number	Bolt \varnothing in	Rated Strength kN (lbs)	Ultimate Strength kN (lbs)	Estimated Assembly Weight kg (lbs)
RCC-55C	3/4	120 (26,900)	138 (31,000)	1.8 (4.0)
RCC-56C	5/8	120 (26,900)	138 (31,000)	1.1 (2.4)

Meets CSA C83 requirements for energy absorption/toughness.

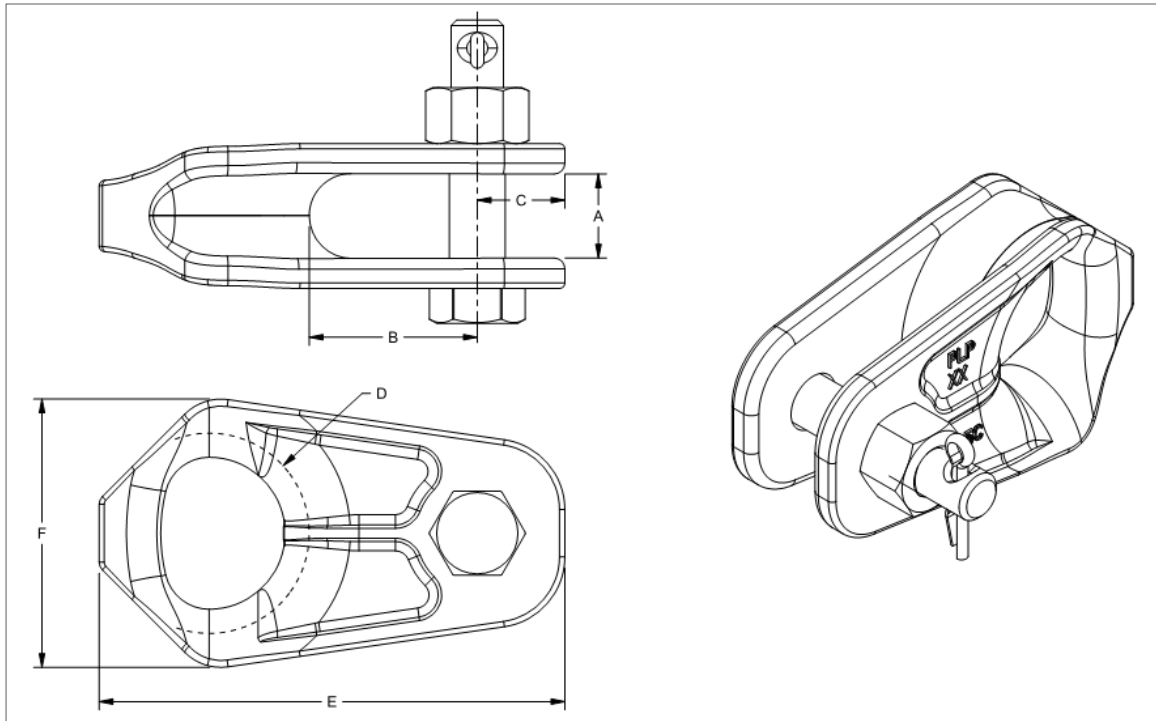
RCC-XXXC meets Charpy Level 1 specifications
 Add -L2 suffix (RCC-XXXC-L2) for parts which meet Charpy Level 2 specifications
 (For Charpy Level specifications, see page 4)

Component	Material
Body	Forged Galvanized Steel
Bolt	Galvanized Steel
Cotter Pin	Stainless Steel

Thimble Clevis

Thimble Clevises are used to reinforce the loop of PLP Dead Ends

Cast Thimble Clevises



Catalog Number	A mm (in)	B mm (in)	C mm (in)	D Seat Diameter mm (in)	E mm (in)	F mm (in)	Bolt or Pin Ø in	Rated Strength kN (lbs)	Ultimate Strength kN (lbs)	Estimated Assembly Weight kg (lbs)
TC-5C	23 (0.9)	48 (1.9)	25 (1.0)	57 (2.2)	132 (5.2)	76 (3.0)	5/8 Bolt	135 (30,300)	155 (35,000)	0.4 (0.8)
TC-100KC	38 (1.5)	74 (2.9)	38 (1.5)	81 (3.2)	196 (7.7)	104 (4.1)	1 Bolt	445 (100,000)	511 (115,000)	3.6 (8.0)

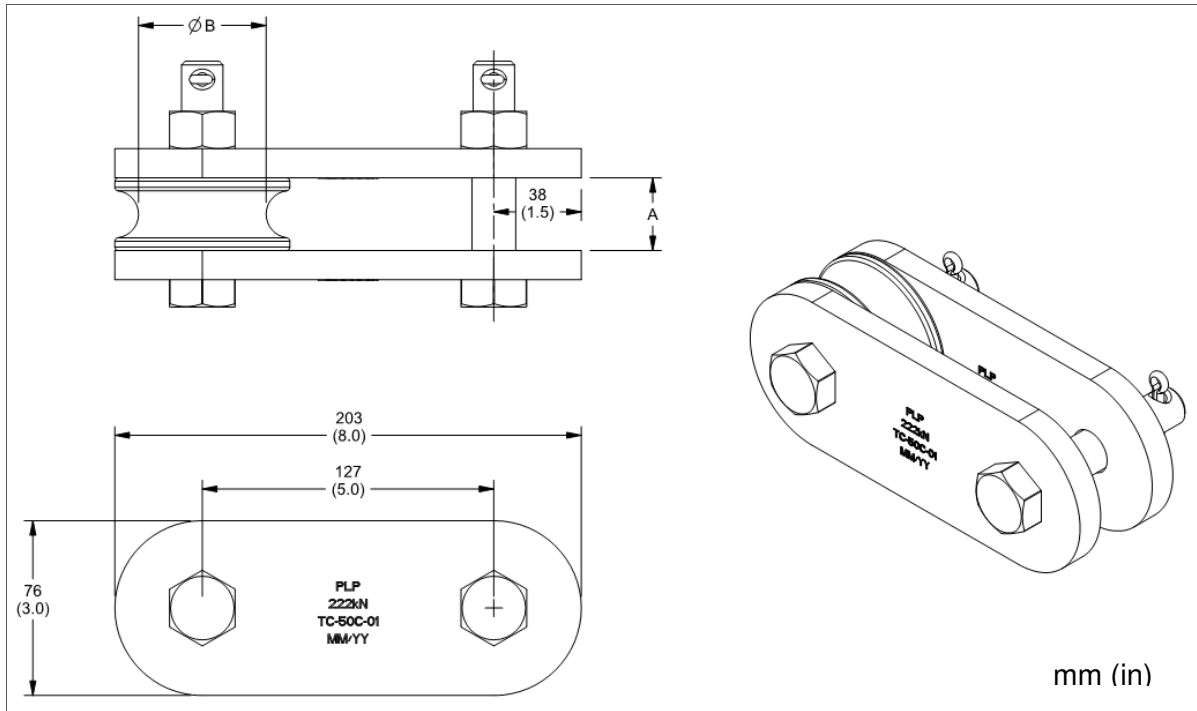
Meets CSA C83 requirements for energy absorption/toughness.

Meets Charpy Level 1 specifications

Charpy Level 2 option available for TC-5C;
TC-5C-L2

(For Charpy Level specifications, see page 4)

Component	Material
Body	High Strength Galvanized Steel
Bolt	Galvanized Steel
Cotter Pin	Stainless Steel

Plate Thimble Clevises


Catalog Number	A mm (in)	B mm (in)	Bolt \varnothing in	Rated Strength kN (lbs)	Ultimate Strength kN (lbs)	Estimated Assembly Weight kg (lbs)
TC-50C-01	31.8 (1.3)	55.6 (2.2)	3/4	222 (50,000)	255 (57,500)	4.5 (10.0)
TC-60C-01	50.8 (2.0)	51.8 (2.0)	1	267 (60,000)	307 (69,000)	5.2 (11.5)

Meets CSA C83 requirements for energy absorption/toughness.

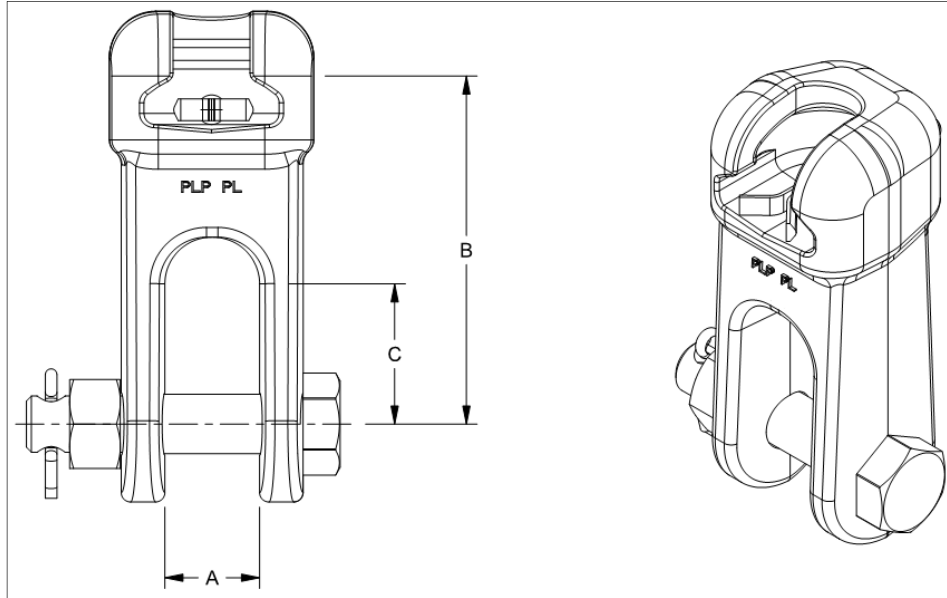
TC-XXC meets Charpy Level 1 specifications
Add -L2 suffix (TC-XXC-L2) for parts which meet Charpy Level 2 specifications

(For Charpy Level specifications, see page 4)

Component	Material
Body	High Strength Galvanized Steel
Bolt	Galvanized Steel
Cotter Pin	Stainless Steel

Socket Clevis

Socket Clevises are used to attach associated hardware to ball and socket insulators.



Catalog Number	A mm (in)	B mm (in)	C mm (in)	Bolt Ø in	ANSI Class	CSA Standard	Rated Strength kN (lbs)	Ultimate Strength kN (lbs)	Estimated Assembly Weight kg (lbs)
SC-55C	22 (0.9)	86 (3.4)	45 (1.8)	5/8	52.5	CS-5	120 (26,900)	138 (31,000)	1.2 (2.7)
SC-56C	22 (0.9)	86 (3.4)	45 (1.8)	3/4	52.5	CS-5	120 (26,900)	138 (31,000)	1.3 (2.9)
SC-220C	30 (1.2)	112 (4.4)	45 (1.8)	3/4	52.8 52.11	CS-8 CS-11	220 (49,500)	253 (56,800)	2.1 (4.6)

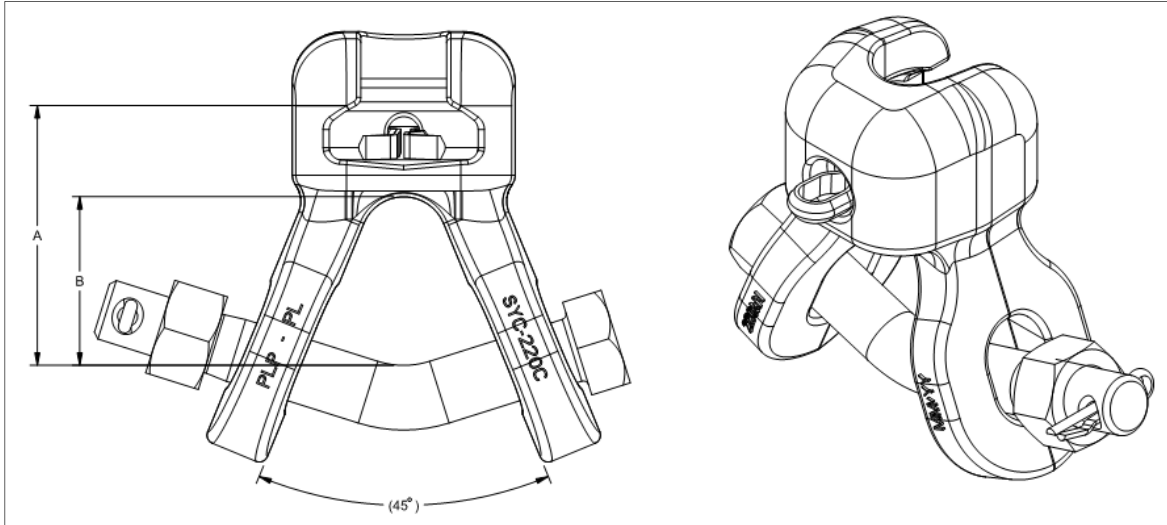
Meets CSA C83 requirements for energy absorption/toughness.

SC-XXC meets Charpy Level 1 specifications
 Add -L2 suffix (SC-XXC-L2) for parts which meet
 Charpy Level 2 specifications
 (For Charpy Level specifications, see page 4)

Component	Material
Body	Forged Galvanized Steel
Bolt	Galvanized Steel
Cotter Pin	Stainless Steel

Socket Y-Clevis

Socket Y-Clevis Fittings are used to attach associated hardware to ball and socket insulators.



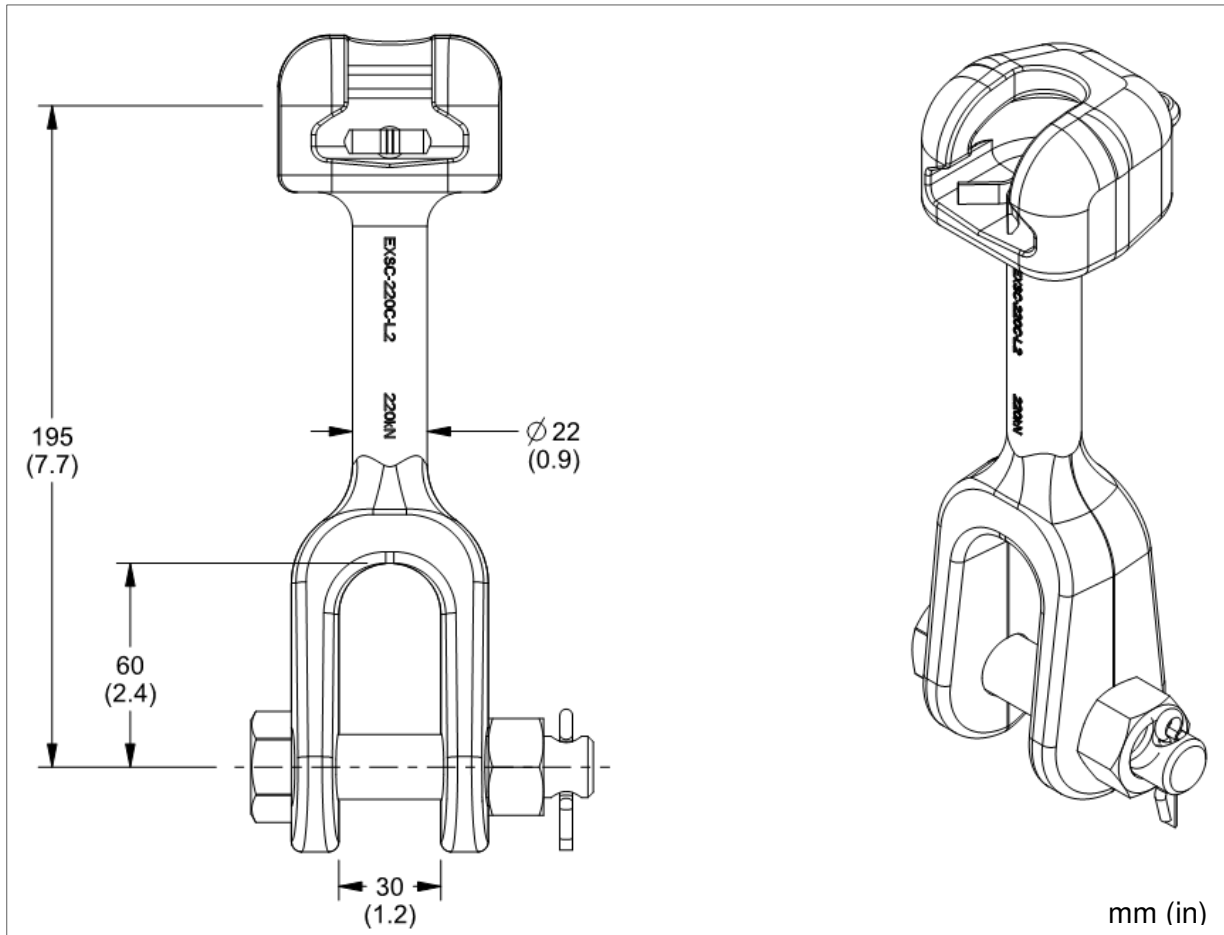
Catalog Number	A mm (in)	B mm (in)	Bolt \varnothing in	ANSI Class	CSA Standard	Rated Strength kN (lbs)	Ultimate Strength kN (lbs)	Estimated Assembly Weight kg (lbs)
SYC-120C	76 (3.0)	40 (1.6)	3/4	52-3 52-5	CS-5	120 (26,900)	138 (31,000)	1.3 (2.9)
SYC-220C	76 (3.0)	50 (2.0)	3/4	52-8 52-11	CS-11	220 (49,500)	253 (56,800)	1.8 (4.0)

Meets CSA C83 requirements for energy absorption/toughness.

SYC-XXXC meets Charpy Level 1 specifications
 Add -L2 suffix (SYC-XXXC-L2) for parts which meet Charpy Level 2 specifications
 (For Charpy Level specifications, see page 4)

Component	Material
Body	Forged Galvanized Steel
Bolt	Galvanized Steel
Cotter Pin	Stainless Steel

Socket-Clevis Extended



Catalog Number	Bolt \varnothing in	ANSI Class	CSA Standard	Rated Strength kN (lbs)	Ultimate Strength kN (lbs)	Estimated Assembly Weight kg (lbs)
EXSC-220C	3/4	52-11	CS-11	220 (49,500)	253 (56,800)	2.0 (4.4)

Meets CSA C83 requirements for energy absorption/toughness.

EXSC-220C meets Charpy Level 1 specifications

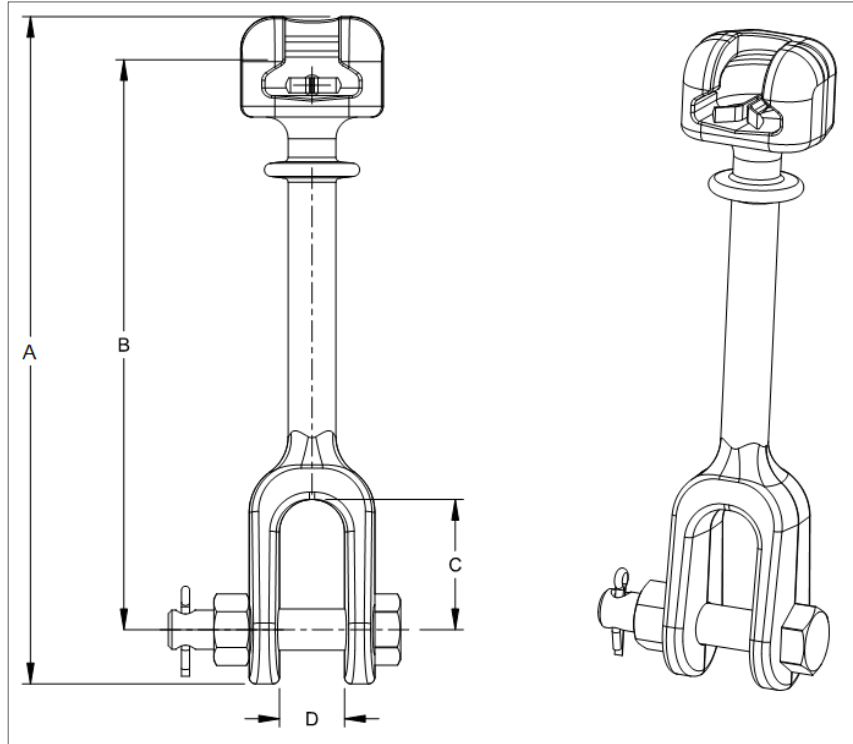
EXSC-220C-L2 meets Charpy Level 2 specifications

(For Charpy Level specifications, see page 4)

Component	Material
Body	Forged Galvanized Steel
Bolt	Galvanized Steel
Cotter Pin	Stainless Steel



Socket-Clevis Hot Line



Catalog Number	A mm (in)	B mm (in)	C mm (in)	D mm (in)	Bolt ∅ in	ANSI Class	CSA Standard	Rated Strength kN (lbs)	Ultimate Strength kN (lbs)	Estimated Assembly Weight kg (lbs)
HLSC-55C	290 (11.4)	255 (10.0)	57 (2.2)	21 (0.8)	5/8	52.5	CS-5	120 (26,900)	138 (31,000)	1.8 (4.0)
HLSC-56C	290 (11.4)	255 (10.0)	57 (2.2)	21 (0.8)	3/4	52.5	CS-5	120 (26,900)	138 (31,000)	1.9 (4.2)
HLSC-220C	308 (12.1)	263 (10.4)	60 (2.4)	30 (1.2)	3/4	52.8 52.11	CS-8 CS-11	220 (49,500)	253 (56,800)	2.5 (5.5)

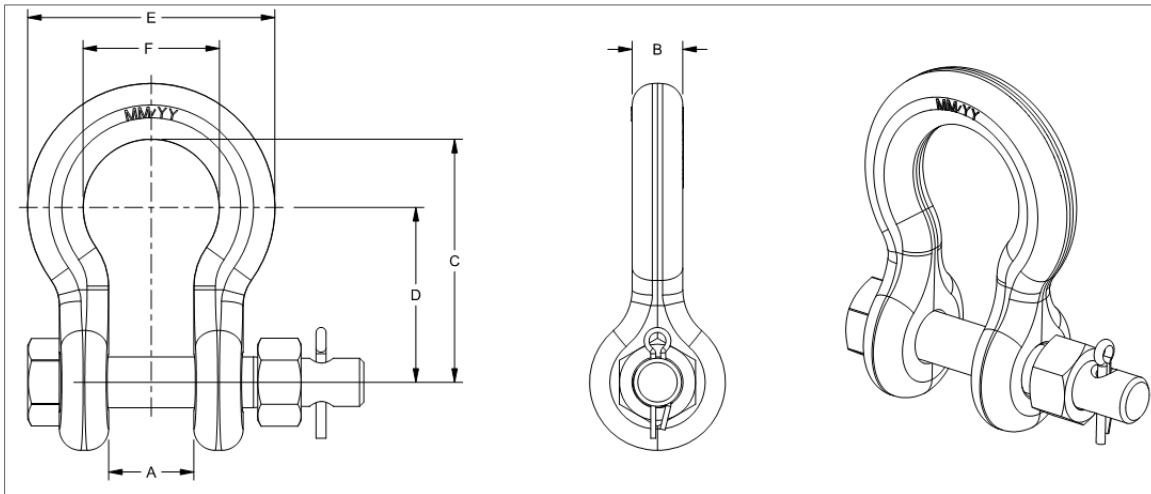
Meets CSA C83 requirements for energy absorption/toughness.

HLSC-XXXC meets Charpy Level 1 specifications
 Add -L2 suffix (HLSC-XXXC-L2) for parts which meet Charpy Level 2 specifications
 (For Charpy Level specifications, see page 4)

Component	Material
Body	Forged Galvanized Steel
Bolt	Galvanized Steel
Cotter Pin	Stainless Steel

Preformed Line Products (Canada) Limited
 Visit our website at: www.preformed.ca Email: sales@preformed.ca
 1711 Bishop Street North, Cambridge, Ontario, Canada, N1T 1N5
 Phone: 519-740-6666 Fax: 519-740-7917

Shackle-Anchor



Catalog Number	A mm (in)	B mm (in)	C mm (in)	D mm (in)	E mm (in)	F mm (in)	Bolt ∅ in	Rated Strength kN (lbs)	Ultimate Strength kN (lbs)	Estimated Assembly Weight kg (lbs)
AS-160C	28 (1.1)	16 (0.6)	74 (2.91)	53 (2.1)	79 (3.1)	43 (1.7)	3/4	160 (36,000)	184 (41,400)	0.9 (1.9)
AS-222C	32 (1.25)	19 (0.7)	91 (3.6)	66 (2.6)	94 (3.7)	51 (2.0)	7/8	222 (50,000)	255 (57,300)	1.3 (2.9)
AS-222C -75	32 (1.25)	19 (0.7)	91 (3.6)	66 (2.6)	94 (3.7)	51 (2.0)	3/4	222 (50,000)	255 (57,300)	1.3 (2.9)
AS-333C	36 (1.4)	22 (0.9)	127 (5)	99 (3.9)	102 (4)	58 (2.3)	1-1/8	333 (75,000)	383 (86,100)	2.5 (5.5)
AS-333C -01	36 (1.4)	22 (0.9)	127 (5)	99 (3.9)	102 (4)	58 (2.3)	1	333 (75,000)	383 (86,100)	2.3 (5.0)
AS-444C	43 (1.7)	29 (1.1)	124 (4.9)	89 (3.5)	127 (5)	69 (2.7)	1-1/4	444 (100,000)	511 (114,800)	4.0 (8.8)
AS-666C	76 (3.0)	32 (1.3)	147 (5.8)	109 (4.3)	145 (5.7)	76 (3.0)	1-3/8	666 (150,000)	766 (172,200)	5.9 (13.0)

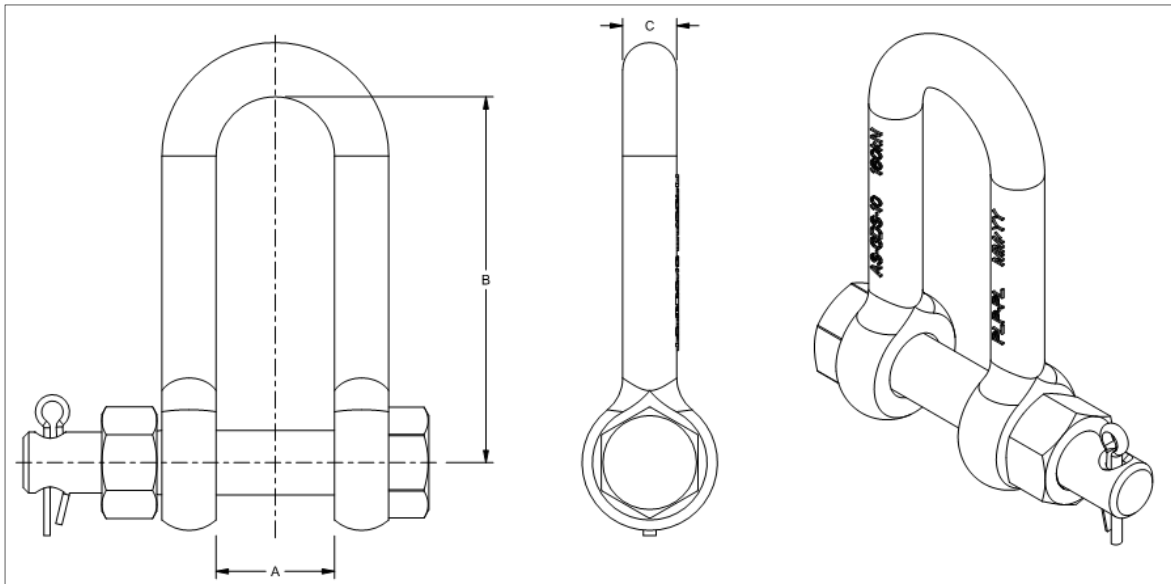
Meets CSA C83 requirements for energy absorption/toughness.

AS-XXXC meets Charpy Level 1 specifications
 Add -L2 suffix (AS-XXXC-L2) for parts which meet
 Charpy Level 2 specifications
 (For Charpy Level specifications, see page 4)

Component	Material
Body	Forged Galvanized Steel
Bolt	Galvanized Steel
Cotter Pin	Stainless Steel

Preformed Line Products (Canada) Limited
 Visit our website at: www.preformed.ca Email: sales@preformed.ca
 1711 Bishop Street North, Cambridge, Ontario, Canada, N1T 1N5
 Phone: 519-740-6666 Fax: 519-740-7917

Shackle-Chain



Catalog Number	A mm (in)	B mm (in)	C mm (in)	Bolt \varnothing in	Rated Strength kN (lbs)	Ultimate Strength kN (lbs)	Estimated Assembly Weight kg (lbs)
AS-199795WM	80 (3.1)	94 (3.7)	16 (0.6)	5/8	120 (26,900)	138 (31,000)	1.0 (2.1)
AS-133C	27 (1.1)	70 (2.8)	16 (0.6)	5/8	135 (31,300)	155 (34,800)	0.6 (1.3)
AS-25KC100	22 (0.9)	100 (3.9)	20 (0.8)	3/4	111 (25,000)	127 (28,500)	1.2 (2.7)
AS-GDS-10	35 (1.4)	108 (4.3)	16 (0.6)	3/4	160 (36,000)	184 (41,300)	0.9 (2.1)
AS-1230C	55 (2.2)	200 (7.9)	55 (2.2)	1-3/4	1230 (276,000)	1415 (318,000)	16.5 (36.4)

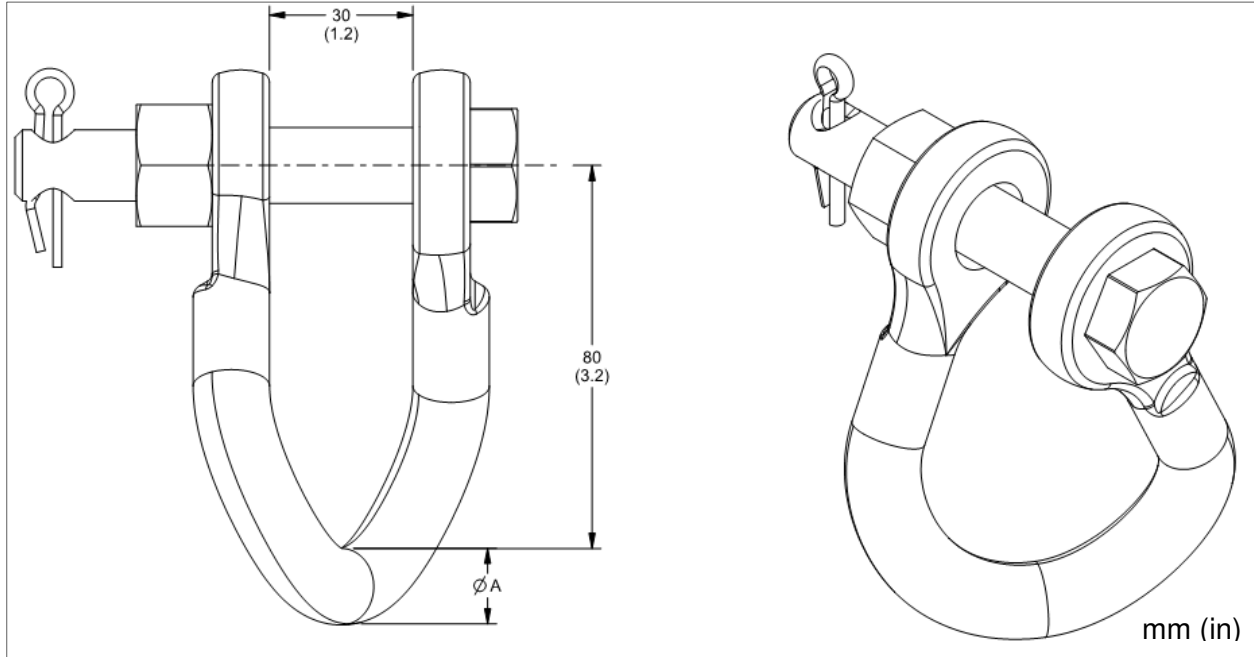
Meets CSA C83 requirements for energy absorption/toughness.

All chain shackles meet Charpy Level 1 specifications
 Add -L2 suffix (AS-XXXC-L2, AS-GDS-10-L2, AS-199795WM-L2) for parts which meet Charpy Level 2 specifications
 (For Charpy Level specifications, see page 4)

Component	Material
Body	Forged Galvanized Steel
Bolt	Galvanized Steel
Cotter Pin	Stainless Steel

Shackle-Twisted

Twisted shackles are used with Twin Grip Suspension Units and for re-orientation of line fittings (i.e. 90 degree rotation).



Catalog Number	A mm (in)	Bolt \varnothing in	Rated Strength kN (lbs)	Ultimate Strength kN (lbs)	Estimated Assembly Weight kg (lbs)
TS-0502C	16 (0.6)	5/8	120 (26,900)	138 (31,000)	0.6 (1.3)
TS-0502C-75	16 (0.6)	3/4	120 (26,900)	138 (31,000)	0.9 (2.0)
TS-0502CHD	20 (0.8)	3/4	222 (49,900)	255 (57,300)	1.1 (2.4)

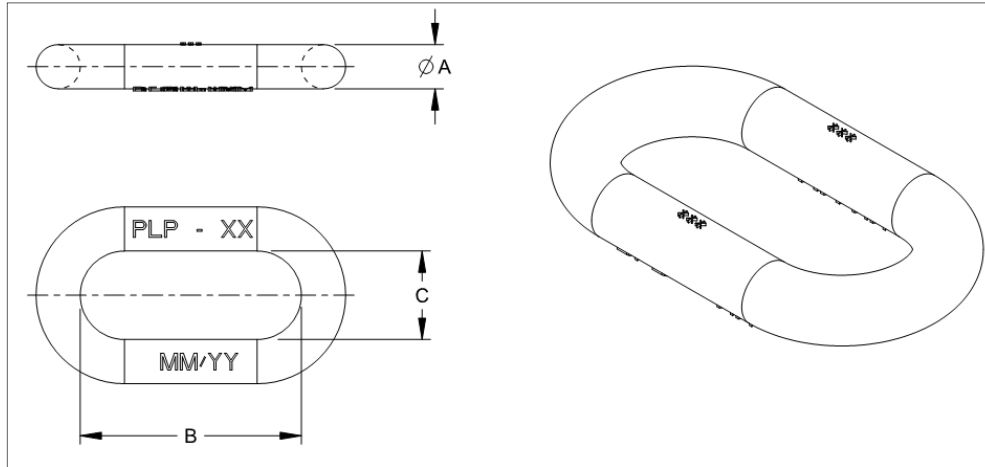
Meets CSA C83 requirements for energy absorption/toughness.

TS-0502CXX meets Charpy Level 1 specifications
 Add -L2 suffix (TS-0502CXX-L2) for parts which meet
 Charpy Level 2 specifications
 (For Charpy Level specifications, see page 4)

Component	Material
Body	Forged Galvanized Steel
Bolt	Galvanized Steel
Cotter Pin	Stainless Steel

Chain Link

Chain Links are used to maintain tower clearance and connect associated hardware in an insulator string.



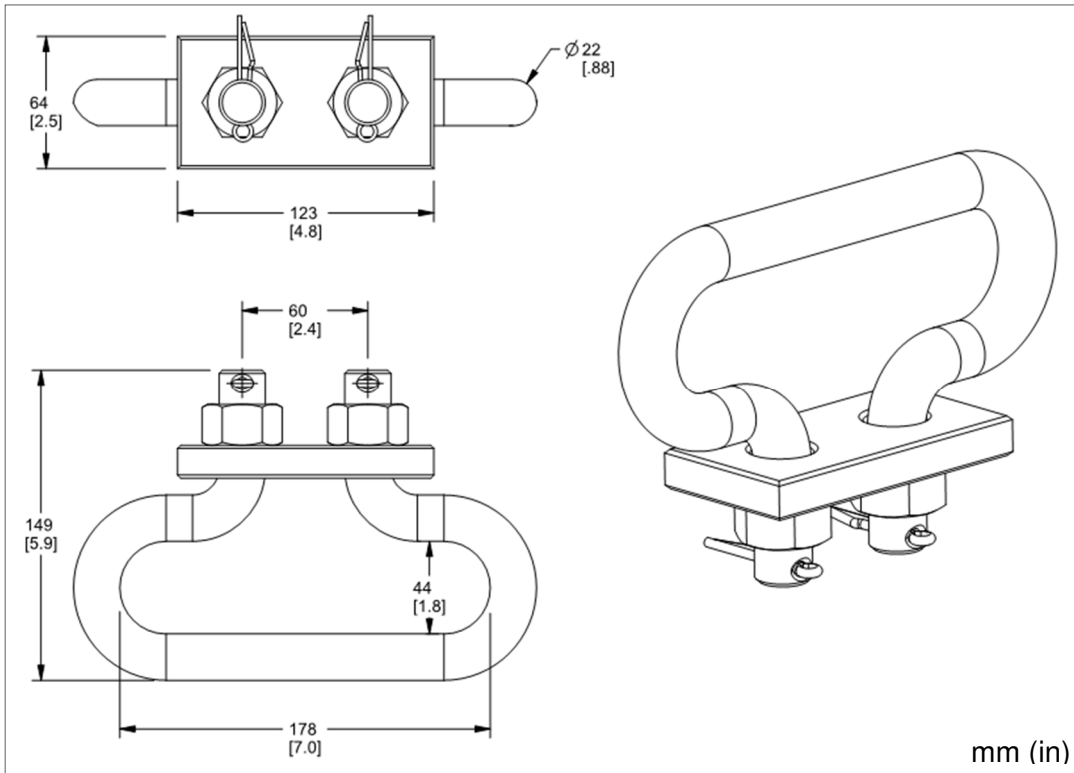
Catalog Number	A mm (in)	B mm (in)	C mm (in)	Rated Strength kN (lbs)	Ultimate Strength kN (lbs)	Estimated Part Weight kg (lbs)
CL-1010C	13 (0.5)	57 (2.3)	25 (1.0)	110 (25,00)	127 (28,500)	0.2 (0.4)
CL-30C	15 (0.6)	64 (2.5)	25 (1.0)	133 (30,000)	153 (34,400)	0.3 (0.6)
CL-40C	15 (0.6)	83 (3.3)	25 (1.0)	153 (34,400)	176 (40,000)	0.4 (0.8)
CL-50C	19 (0.8)	83 (3.3)	25 (1.0)	220 (50,000)	253 (56,800)	0.6 (1.3)
CL-60C	21 (0.8)	89 (3.5)	25 (1.0)	267 (60,000)	307 (69,000)	0.7 (1.6)
CL-80C	24 (1.0)	102 (4.0)	32 (1.3)	355 (80,000)	408 (91,700)	1.2 (2.6)

Meets CSA C83 requirements for energy absorption/toughness.

CL-XXXXC meets Charpy Level 1 specifications
 Add -L2 suffix (CL-XXXXC-L2) for parts which meet
 Charpy Level 2 specifications
 (For Charpy Level specifications, see page 4)

Component	Material
Body	Forged Steel

Strain Link



Catalog Number	Rated Strength kN (lbs)	Ultimate Strength kN (lbs)	Estimated Assembly Weight kg (lbs)
SL-60C-L2	267 (60,000)	307 (69,000)	2.6 (5.7)

Comes with two (2) hex nuts and two (2) self locking cotter pins.

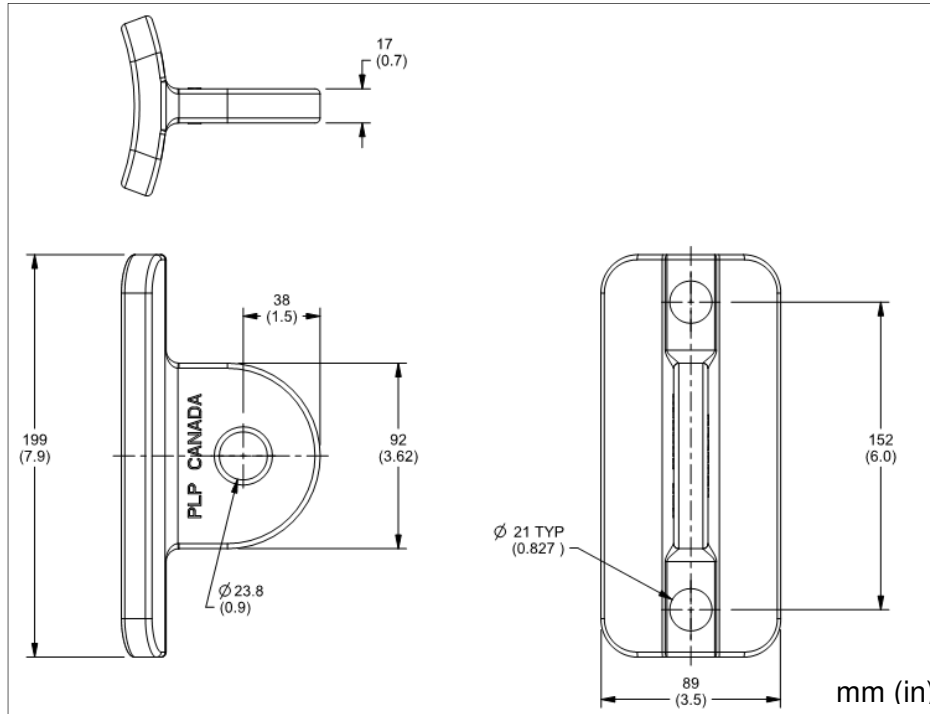
Meets CSA C83 requirements for energy absorption/toughness.

SL-60C-L2 meets Charpy Level 2 specifications
(For Charpy Level specifications, see page 4)

Component	Material
Body	Galvanized Steel
Cotter Pins	Stainless Steel

Curved Base Dead-End Tee

Curved base dead-end tees are used to attach cables to the pole, cross arm or used as a cross brace tensioning point.



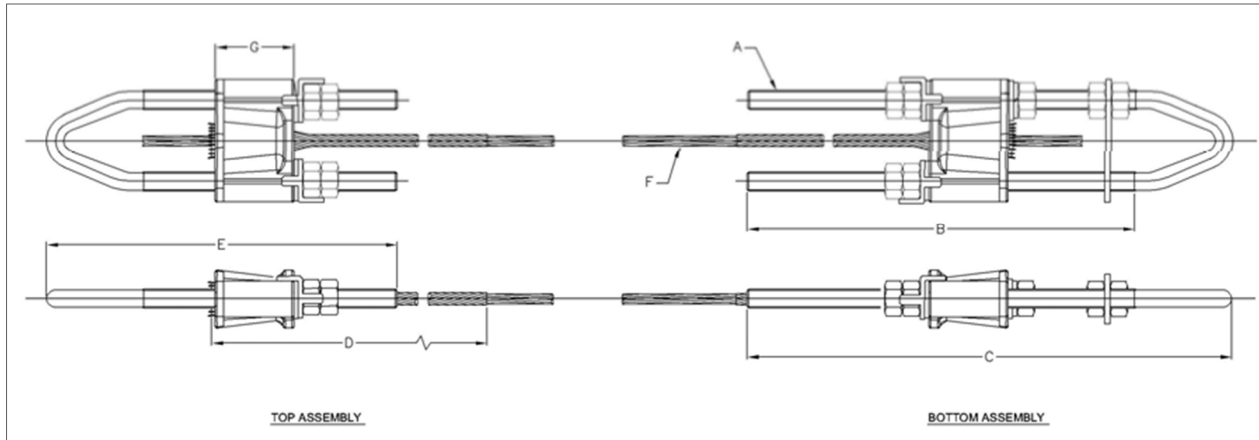
Catalog Number	Rated Strength kN (lbs)	Ultimate Strength kN (lbs)	Material	Estimated Part Weight kg (lbs)
CBDT78-1	227 (51,000)	267 (60,000)	High Strength Galvanized Steel	2.8 (6.2)

CBDT78-1 meets Charpy Level 1 specifications
(For Charpy Level specifications, see page 4)

Vari-Grip™ Dead End

Left-Hand Lay

Preformed Line Products, Vari-Grip™ Dead Ends are used for tower, pole and antenna guying applications. The bottom section allows for 18" minimum of adjustability.



Catalog Number	Top Section	Bottom Section	A U-Bolt \varnothing in	B Thread Length mm (in)	C U-Bolt Length mm (in)	D Rod Length mm (in)	E U-Bolt Length mm (in)	F Strand Size	G Housing Length mm (in)	Rated Strength kN (lbs)
VG-716S	VG-716T	VG-716B	5/8	584 (23.0)	737 (29.0)	686 (27.0)	305 (12.0)	7/16" GR 220	83 (3.3)	106 (23,800)
VG-58S	VG-58T	VG-58B	3/4	610 (24.0)	762 (30.0)	784 (31.0)	432 (17.0)	5/8" GR 220	83 (3.3)	213 (48,000)
VG-750S	VG-750T	VG-750B	1-1/4	813 (32.0)	914 (36.0)	1118 (44.0)	356 (14.0)	3/4" GR 220	127 (5.0)	302 (68,000)
VG-1000S	VG-1000T	VG-1000B	1-1/4	813 (32.0)	914 (36.0)	1676 (66.0)	356 (14.0)	1" GR 220	127 (5.0)	543 (122,000)

Catalog Number VG-XXXXS includes 1 top and 1 bottom assembly

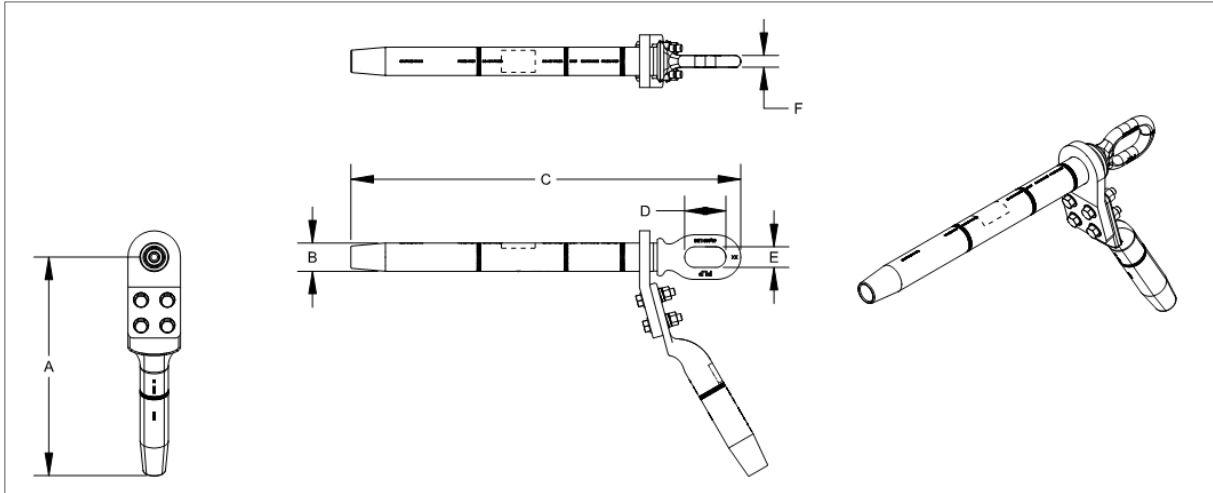
Other sizes are available upon request.

All components meet Charpy Level 1 specifications
(For Charpy Level specifications, see page 4)

Component	Material
Housing	High Strength Galvanized Steel
U-Bolts	High Strength Galvanized Steel
Wedge	Cast Aluminum
Rods	Galvanized Steel

Consult PLP 'Energy Catalog' and 'Tower & Antenna Catalog' for non-Charpy Vari-Grips™.

Compression Dead-end Jumper Assembly



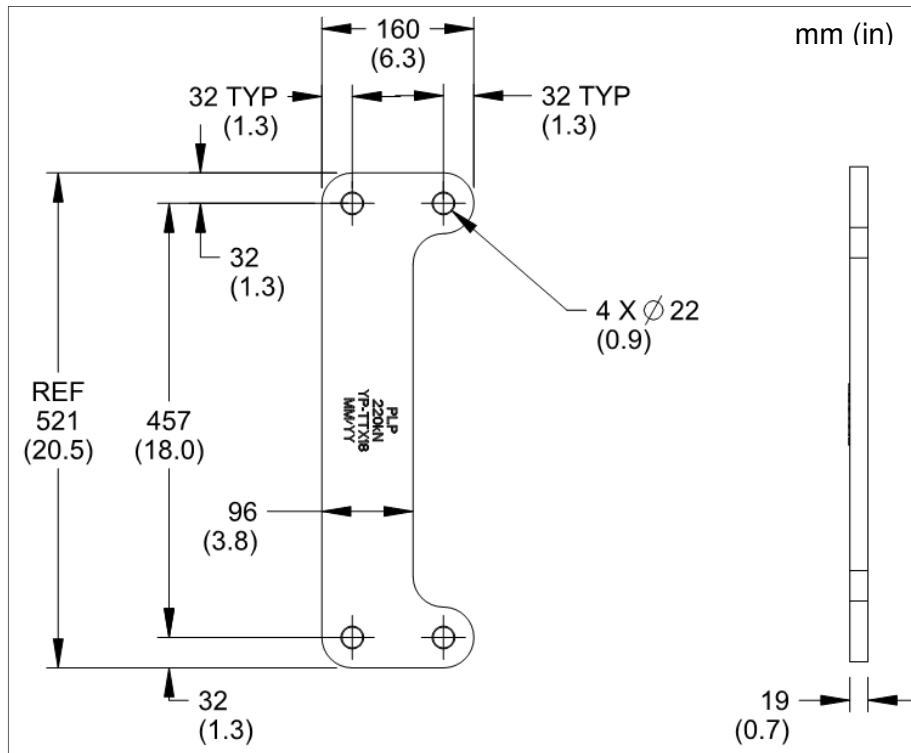
Catalog Number	Conductor	A mm (in)	B mm (in)	C mm (in)	D mm (in)	E mm (in)	F mm (in)	Estimated Assembly Weight kg (lbs)
CMPDEJ-1108C	ACSR DRAKE	373 (14.7)	48 (1.9)	620 (24.4)	70 (2.8)	35 (1.4)	20 (0.8)	3.7 (8.1)

CMPDEJ-XXXXC meets Charpy Level 1 specifications
(For Charpy Level specifications, see page 4)

Yoke Plates

Varying shapes, sizes, strengths, thicknesses and hole spacings are available. Contact PLP Canada for custom designs.

YP-TTX18



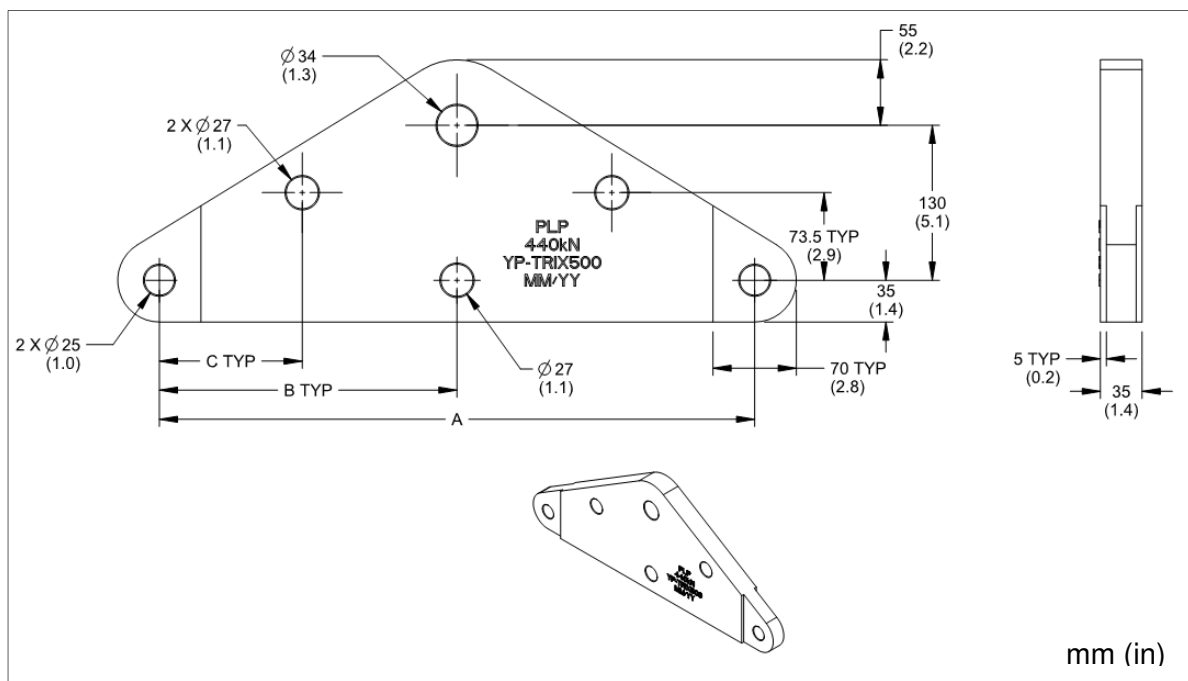
Catalog Number	Rated Strength kN (lbs)	Ultimate Strength kN (lbs)	Material	Estimated Part Weight kg (lbs)
YP-TTX18	220 (49,400)	253 (56,800)	Galvanized Steel	8.3 (18.3)

Meets CSA C83 requirements for energy absorption/toughness.

YP-TTX18 meets Charpy Level 1 specifications
(For Charpy Level specifications, see page 4)



YP-TRIXXX



Catalog Number	A mm (in)	B mm (in)	C mm (in)	Rated Strength kN (lbs)	Ultimate Strength kN (lbs)	Estimated Part Weight kg (lbs)
YP-TRIX457	457 (18.0)	229 (9.0)	119 (4.7)	440 (98,900)	506 (113,700)	18.6 (41.0)
YP-TRIX500	500 (19.7)	250 (9.8)	120 (4.7)	440 (98,900)	506 (113,700)	20.4 (45.0)

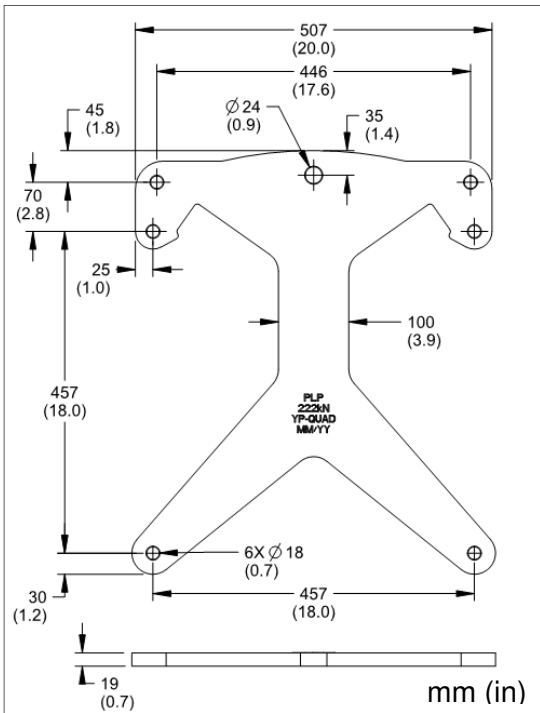
Meets CSA C83 requirements for energy absorption/toughness.

Component	Material
Plate	Galvanized Steel

YP-TRIX(XXX) meets Charpy Level 1 specifications
(For Charpy Level specifications, see page 4)

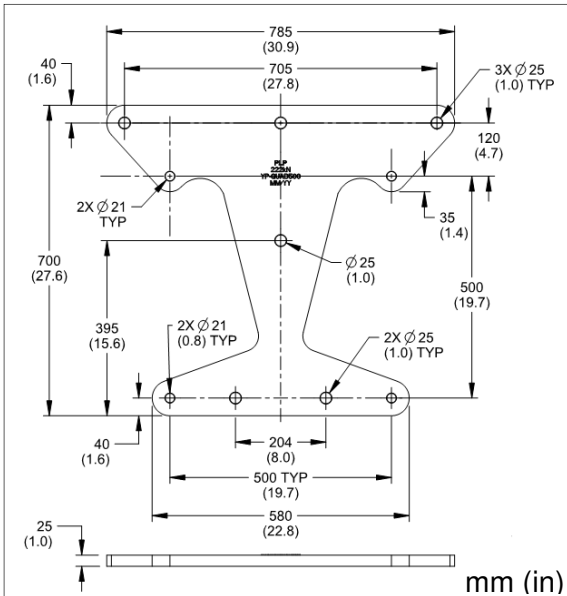


YP-QUAD



Catalog Number	Rated Strength kN (lbs)	Ultimate Strength kN (lbs)	Material	Estimated Part Weight kg (lbs)
YP-QUAD	220 (49,400)	255 (57,300)	Galvanized Steel	19.5 (43.0)

YP-QUAD500



Catalog Number	Rated Strength kN (lbs)	Ultimate Strength kN (lbs)	Material	Estimated Part Weight kg (lbs)
YP-QUAD500	220 (49,400)	255 (57,300)	Galvanized Steel	50.0 (110.0)

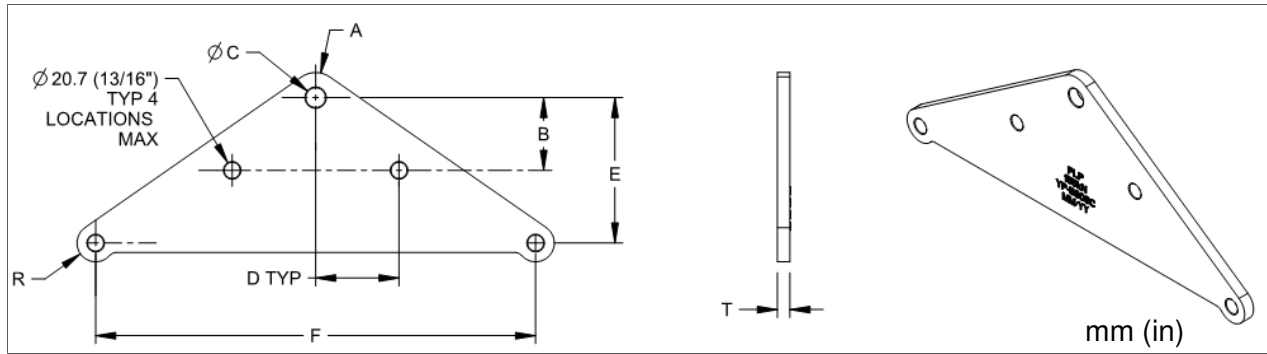
Meets CSA C83 requirements for energy absorption/toughness.

YP-QUADXXX meets Charpy Level 1 specifications
(For Charpy Level specifications, see page 4)

Preformed Line Products (Canada) Limited
 Visit our website at: www.preformed.ca Email: sales@preformed.ca
 1711 Bishop Street North, Cambridge, Ontario, Canada, N1T 1N5
 Phone: 519-740-6666 Fax: 519-740-7917



YP-59XX



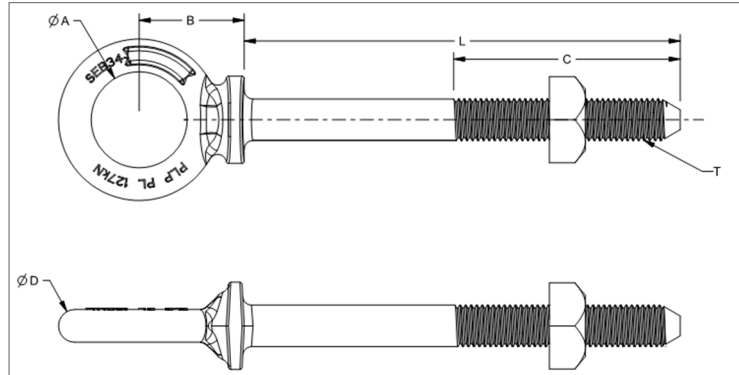
Catalog Number	A mm (in)	B mm (in)	C mm (in)	D mm (in)	E mm (in)	F mm (in)	R mm (in)	T mm (in)	Rated Strength kN (lbs)	Ultimate Strength kN (lbs)	Estimated Part Weight kg (lbs)
YP-5907C	25 (1.0)	N/A	21 (0.8)	N/A	102 (4.0)	305 (12.0)	21 (0.8)	13 (0.5)	133 (30,000)	153 (34,500)	7.1 (15.6)
YP-5908C	40 (1.6)	60 (2.4)	21 (0.8)	89 (3.5)	108 (4.3)	460 (18.1)	30 (1.2)	16 (0.6)	178 (40,000)	205 (46,000)	6.6 (14.6)
YP-5909C	32 (1.3)	92 (3.6)	25 (1.0)	106 (4.2)	184 (7.2)	559 (22.0)	24 (0.9)	16 (0.6)	155 (34,800)	178 (40,000)	9.5 (21.0)
YP-5910C	32 (1.3)	92 (3.6)	25 (1.0)	125 (4.9)	216 (8.5)	660 (26.0)	24 (0.9)	19 (0.7)	193 (43,300)	222 (49,900)	15.0 (33.0)
YP-5911C	32 (1.3)	92 (3.6)	25 (1.0)	139 (5.5)	241 (9.5)	736 (29)	24 (0.9)	19 (0.7)	220 (49,400)	253 (56,800)	21.8 (48.1)
YP-5912C	32 (1.3)	102 (4.0)	25 (1.0)	156 (6.1)	267 (10.5)	813 (32.0)	24 (0.9)	19 (0.7)	220 (49,400)	253 (56,800)	27.1 (59.8)
YP-5913C	32 (1.3)	114 (4.5)	25 (1.0)	179 (7.0)	299 (11.8)	940 (37.0)	24 (0.9)	19 (0.7)	220 (49,400)	253 (56,800)	27.2 (60.0)
YP-5908 CHD	40 (1.6)	60 (2.4)	21 (0.8)	89 (3.5)	108 (4.3)	460 (18.1)	30 (1.2)	19 (0.7)	222 (49,900)	255 (57,300)	7.9 (17.4)

Meets CSA C83 requirements for energy absorption/toughness.

All plates meet Charpy Level 1 specifications
 Add -L2 suffix (YP-59XXC-L2) for parts which meet Charpy Level 2 specifications
 (For Charpy Level specifications, see page 4)

Component	Material
Plate	Galvanized Steel

Bolt: Shoulder Eye



SEBXX-XX (H)
 DIAMETER T (in) HEX NUT OPTION
 LENGTH L (in)

Component	Material
Bolt	Galvanized Steel
Nut	Galvanized Steel

Catalog Number	A mm (in)	B mm (in)	C mm (in)	D mm (in)	T Thread Dia. in UNC	L Length Range mm (in)	Rated Strength kN (lbs)	Ultimate Strength kN (lbs)
SEB58-06	34 (1.3)	40 (1.6)	155 (6.1)	13 (0.5)	5/8-11	153 (6)	63 (14,100)	72 (16,200)
SEB58-08	34 (1.3)	40 (1.6)	155 (6.1)	13 (0.5)	5/8-11	204 (8)	63 (14,100)	72 (16,200)
SEB58-10	34 (1.3)	40 (1.6)	155 (6.1)	13 (0.5)	5/8-11	254 (10)	63 (14,100)	72 (16,200)
SEB58-12	34 (1.3)	40 (1.6)	155 (6.1)	13 (0.5)	5/8-11	305 (12)	63 (14,100)	72 (16,200)
SEB58-14	34 (1.3)	40 (1.6)	155 (6.1)	13 (0.5)	5/8-11	355 (14)	63 (14,100)	72 (16,200)
SEB58-16	34 (1.3)	40 (1.6)	155 (6.1)	13 (0.5)	5/8-11	406 (16)	63 (14,100)	72 (16,200)
SEB58-18	34 (1.3)	40 (1.6)	155 (6.1)	13 (0.5)	5/8-11	457 (18)	63 (14,100)	72 (16,200)
SEB58-20	34 (1.3)	40 (1.6)	155 (6.1)	13 (0.5)	5/8-11	508 (20)	63 (14,100)	72 (16,200)
SEB58-22	34 (1.3)	40 (1.6)	155 (6.1)	13 (0.5)	5/8-11	559 (22)	63 (14,100)	72 (16,200)
SEB58-24	34 (1.3)	40 (1.6)	155 (6.1)	13 (0.5)	5/8-11	610 (24)	63 (14,100)	72 (16,200)

Preformed Line Products (Canada) Limited
 Visit our website at: www.preformed.ca Email: sales@preformed.ca
 1711 Bishop Street North, Cambridge, Ontario, Canada, N1T 1N5
 Phone: 519-740-6666 Fax: 519-740-7917



PREFORMED LINE PRODUCTS

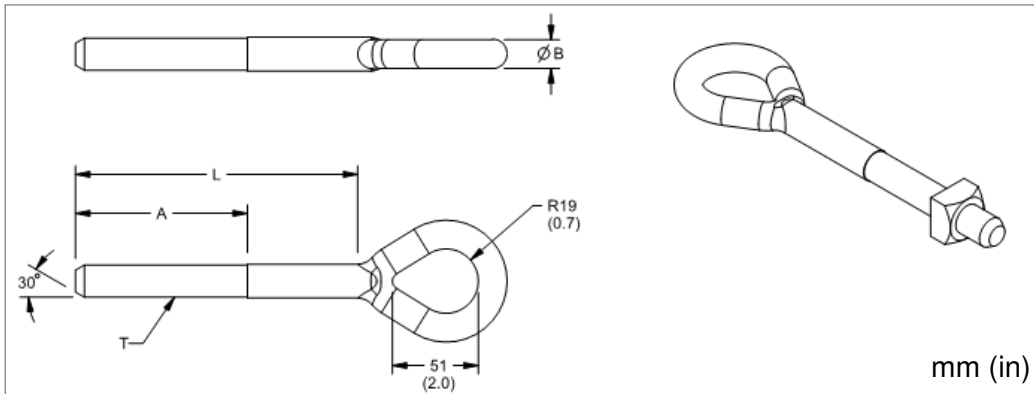
Catalog Number	A mm (in)	B mm (in)	C mm (in)	D mm (in)	T Thread Dia. in UNC	L Length Range mm (in)	Rated Strength kN (lbs)	Ultimate Strength kN (lbs)
SEB34-06	44 (1.7)	48 (1.9)	105 (4.1)	15 (0.6)	3/4-10	153 (6)	127 (28,500)	146 (32,800)
SEB34-08	44 (1.7)	48 (1.9)	105 (4.1)	15 (0.6)	3/4-10	204 (8)	127 (28,500)	146 (32,800)
SEB34-10	44 (1.7)	48 (1.9)	155 (6.1)	15 (0.6)	3/4-10	254 (10)	127 (28,500)	146 (32,800)
SEB34-12	44 (1.7)	48 (1.9)	155 (6.1)	15 (0.6)	3/4-10	305 (12)	127 (28,500)	146 (32,800)
SEB34-14	44 (1.7)	48 (1.9)	155 (6.1)	15 (0.6)	3/4-10	355 (14)	127 (28,500)	146 (32,800)
SEB34-16	44 (1.7)	48 (1.9)	155 (6.1)	15 (0.6)	3/4-10	406 (16)	127 (28,500)	146 (32,800)
SEB34-18	44 (1.7)	48 (1.9)	155 (6.1)	15 (0.6)	3/4-10	457 (18)	127 (28,500)	146 (32,800)
SEB34-20	44 (1.7)	48 (1.9)	155 (6.1)	15 (0.6)	3/4-10	508 (20)	127 (28,500)	146 (32,800)
SEB34-22	44 (1.7)	48 (1.9)	155 (6.1)	15 (0.6)	3/4-10	559 (22)	127 (28,500)	146 (32,800)
SEB34-24	44 (1.7)	48 (1.9)	155 (6.1)	15 (0.6)	3/4-10	610 (24)	127 (28,500)	146 (32,800)
SEB34-26	44 (1.7)	48 (1.9)	155 (6.1)	15 (0.6)	3/4-10	660 (26)	127 (28,500)	146 (32,800)
SEB34-28	44 (1.7)	48 (1.9)	155 (6.1)	15 (0.6)	3/4-10	711 (28)	127 (28,500)	146 (32,800)
SEB78-08	50 (2.0)	54 (2.1)	155 (6.1)	18 (0.7)	7/8-9	204 (8)	133 (29,900)	153 (34,300)
SEB78-10	50 (2.0)	54 (2.1)	155 (6.1)	18 (0.7)	7/8-9	254 (10)	133 (29,900)	153 (34,300)
SEB78-12	50 (2.0)	54 (2.1)	155 (6.1)	18 (0.7)	7/8-9	305 (12)	133 (29,900)	153 (34,300)
SEB78-14	50 (2.0)	54 (2.1)	155 (6.1)	18 (0.7)	7/8-9	355 (14)	133 (29,900)	153 (34,300)
SEB78-16	50 (2.0)	54 (2.1)	155 (6.1)	18 (0.7)	7/8-9	406 (16)	133 (29,900)	153 (34,300)
SEB78-18	50 (2.0)	54 (2.1)	155 (6.1)	18 (0.7)	7/8-9	457 (18)	133 (29,900)	153 (34,300)
SEB78-20	50 (2.0)	54 (2.1)	155 (6.1)	18 (0.7)	7/8-9	508 (20)	133 (29,900)	153 (34,300)
SEB78-22	50 (2.0)	54 (2.1)	155 (6.1)	18 (0.7)	7/8-9	559 (22)	133 (29,900)	153 (34,300)

Contact PLP for estimated assembly weights

All Shoulder Eye Bolts meet Charpy Level 1 specifications
(For Charpy Level specifications, see page 4)

Preformed Line Products (Canada) Limited
 Visit our website at: www.preformed.ca Email: sales@preformed.ca
 1711 Bishop Street North, Cambridge, Ontario, Canada, N1T 1N5
 Phone: 519-740-6666 Fax: 519-740-7917

Bolt: Oval Eye



Catalog Number	A Thread Length mm (in)	T Thread in UNC	L Length mm (in)	B mm (in)	Rated Strength kN (lbs)	Ultimate Strength kN (lbs)
R-9406C	110 (4)	5/8-11	152 (6)	14 (0.6)	63 (14,100)	73 (16,200)
R-9408C	110 (4)	5/8-11	200 (8)	14 (0.6)	63 (14,100)	73 (16,200)
R-9409C	110 (4)	5/8-11	225 (9)	14 (0.6)	63 (14,100)	73 (16,200)
R-9410C	160 (6)	5/8-11	255 (10)	14 (0.6)	63 (14,100)	73 (16,200)
R-9412C	160 (6)	5/8-11	305 (12)	14 (0.6)	63 (14,100)	73 (16,200)
R-9414C	160 (6)	5/8-11	355 (14)	14 (0.6)	63 (14,100)	73 (16,200)
R-9416C	160 (6)	5/8-11	405 (16)	14 (0.6)	63 (14,100)	73 (16,200)
R-9418C	160 (6)	5/8-11	460 (18)	14 (0.6)	63 (14,100)	73 (16,200)
R-9420C	160 (6)	5/8-11	510 (20)	14 (0.6)	63 (14,100)	73 (16,200)
R-9422C	160 (6)	5/8-11	560 (22)	14 (0.6)	63 (14,100)	73 (16,200)
R-9424C	160 (6)	5/8-11	610 (24)	14 (0.6)	63 (14,100)	73 (16,200)

Preformed Line Products (Canada) Limited

Visit our website at: www.preformed.ca Email: sales@preformed.ca
 1711 Bishop Street North, Cambridge, Ontario, Canada, N1T 1N5
 Phone: 519-740-6666 Fax: 519-740-7917



PREFORMED LINE PRODUCTS

Catalog Number	A Thread Length mm (in)	T Thread in UNC	L Length mm (in)	B mm (in)	Rated Strength kN (lbs)	Ultimate Strength kN (lbs)
R-9504C	102 (4)	3/4-10	115 (4)	17 (0.7)	127 (28,500)	146 (32,800)
R-9508C	102 (4)	3/4-10	200 (8)	17 (0.7)	127 (28,500)	146 (32,800)
R-9510C	160 (6)	3/4-10	255 (10)	17 (0.7)	127 (28,500)	146 (32,800)
R-9512C	260 (10)	3/4-10	305 (12)	17 (0.7)	127 (28,500)	146 (32,800)
R-9514C	260 (10)	3/4-10	355 (14)	17 (0.7)	127 (28,500)	146 (32,800)
R-9516C	260 (10)	3/4-10	405 (16)	17 (0.7)	127 (28,500)	146 (32,800)
R-9518C	260 (10)	3/4-10	455 (18)	17 (0.7)	127 (28,500)	146 (32,800)
R-9520C	260 (10)	3/4-10	515 (20)	17 (0.7)	127 (28,500)	146 (32,800)
R-9522C	260 (10)	3/4-10	565 (22)	17 (0.7)	127 (28,500)	146 (32,800)
R-9524C	160 (6)	3/4-10	615 (24)	17 (0.7)	127 (28,500)	146 (32,800)

Contact PLP for estimated assembly weights

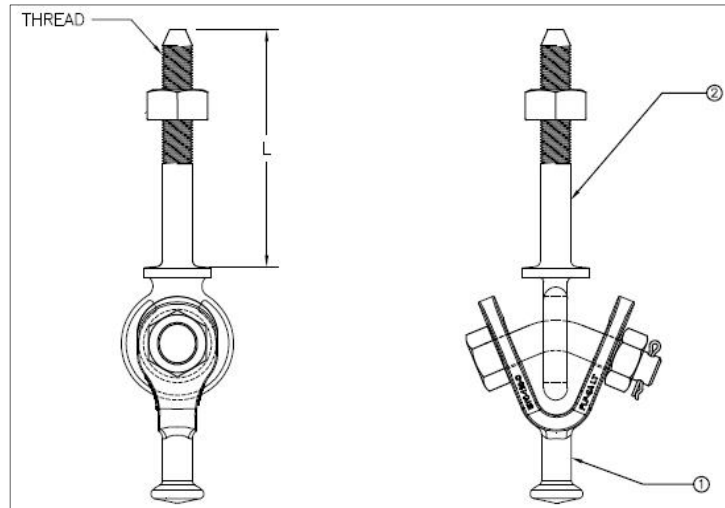
All bolts meet CSA C83 requirements for energy absorption/toughness and Charpy Level 1 specifications

(For Charpy Level specifications, see page 4)

Preformed Line Products (Canada) Limited

Visit our website at: www.preformed.ca Email: sales@preformed.ca
1711 Bishop Street North, Cambridge, Ontario, Canada, N1T 1N5
Phone: 519-740-6666 Fax: 519-740-7917

Bolt: Ball Link Y-Eye



Item	Description	Part Number	Quantity
1	Ball Y-Clevis	BYC-120C (see page 8 for reference)	1
2	Shoulder Eye Bolt	SEBXX-XX (see page 37 for reference)	1

BLYEBXX - XX
 DIAMETER (in) LENGTH L (in)

Example: BLYEB58-06 consists of
 BYC-120C and SEB58-06
 (5/8"-11 thread, 6" length)

Catalog Number	Shoulder Eye Bolt	L Length mm (in)	Thread Dia. in UNC	Rated Strength kN (lbs)	Ultimate Strength kN (lbs)
BLYEB58-06	SEB58-06	155 (6)	5/8-11	63 (14,100)	72 (16,200)
BLYEB58-08	SEB58-08	205 (8)	5/8-11	63 (14,100)	72 (16,200)
BLYEB58-10	SEB58-10	255 (10)	5/8-11	63 (14,100)	72 (16,200)
BLYEB58-12	SEB58-12	305 (12)	5/8-11	63 (14,100)	72 (16,200)
BLYEB58-14	SEB58-14	355 (14)	5/8-11	63 (14,100)	72 (16,200)
BLYEB58-16	SEB58-16	405 (16)	5/8-11	63 (14,100)	72 (16,200)
BLYEB58-18	SEB58-18	455 (18)	5/8-11	63 (14,100)	72 (16,200)

Preformed Line Products (Canada) Limited
 Visit our website at: www.preformed.ca Email: sales@preformed.ca
 1711 Bishop Street North, Cambridge, Ontario, Canada, N1T 1N5
 Phone: 519-740-6666 Fax: 519-740-7917



PREFORMED LINE PRODUCTS

BLYEB34-06	SEB34-06	155 (6)	3/4-10	127 (28,500)	146 (32,800)
BLYEB34-08	SEB34-08	205 (8)	3/4-10	127 (28,500)	146 (32,800)
BLYEB34-10	SEB34-10	255 (10)	3/4-10	127 (28,500)	146 (32,800)
BLYEB34-12	SEB34-12	305 (12)	3/4-10	127 (28,500)	146 (32,800)
BLYEB34-14	SEB34-14	355 (14)	3/4-10	127 (28,500)	146 (32,800)
BLYEB34-16	SEB34-16	405 (16)	3/4-10	127 (28,500)	146 (32,800)
BLYEB34-18	SEB34-18	455 (18)	3/4-10	127 (28,500)	146 (32,800)
BLYEB34-20	SEB34-20	505 (20)	3/4-10	127 (28,500)	146 (32,800)
BLYEB34-22	SEB34-22	555 (10)	3/4-10	127 (28,500)	146 (32,800)
BLYEB34-24	SEB34-24	605 (10)	3/4-10	127 (28,500)	146 (32,800)
BLYEB78-08	SEB78-08	205 (8)	7/8-9	133 (29,900)	153 (34,300)
BLYEB78-10	SEB78-10	255 (10)	7/8-9	133 (29,900)	153 (34,300)
BLYEB78-12	SEB78-12	305 (12)	7/8-9	133 (29,900)	153 (34,300)
BLYEB78-14	SEB78-14	355 (14)	7/8-9	133 (29,900)	153 (34,300)
BLYEB78-16	SEB78-16	405 (16)	7/8-9	133 (29,900)	153 (34,300)
BLYEB78-18	SEB78-18	455 (18)	7/8-9	133 (29,900)	153 (34,300)
BLYEB78-20	SEB78-20	505 (18)	7/8-9	133 (29,900)	153 (34,300)
BLYEB78-22	SEB78-22	555 (22)	7/8-9	133 (29,900)	153 (34,300)

Contact PLP for estimated assembly weights

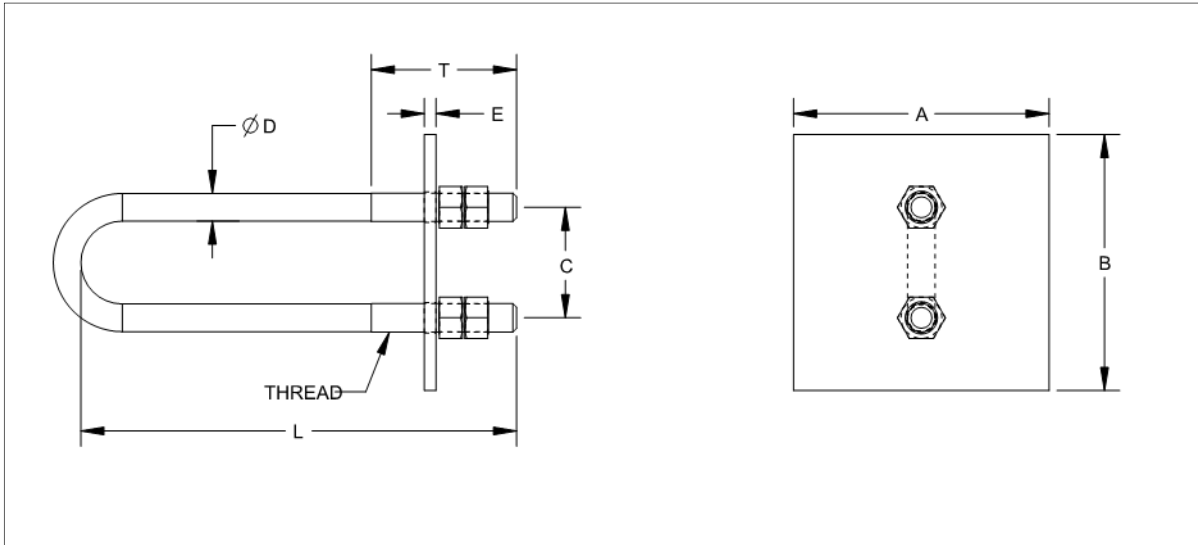
Factory assembled

All assemblies meet CSA C83 requirements for energy absorption/toughness and Charpy Level 1 specifications
(For Charpy Level specifications, see page 4)

Preformed Line Products (Canada) Limited
Visit our website at: www.preformed.ca Email: sales@preformed.ca
1711 Bishop Street North, Cambridge, Ontario, Canada, N1T 1N5
Phone: 519-740-6666 Fax: 519-740-7917

U-Bolt Assemblies

GRU-11XXX



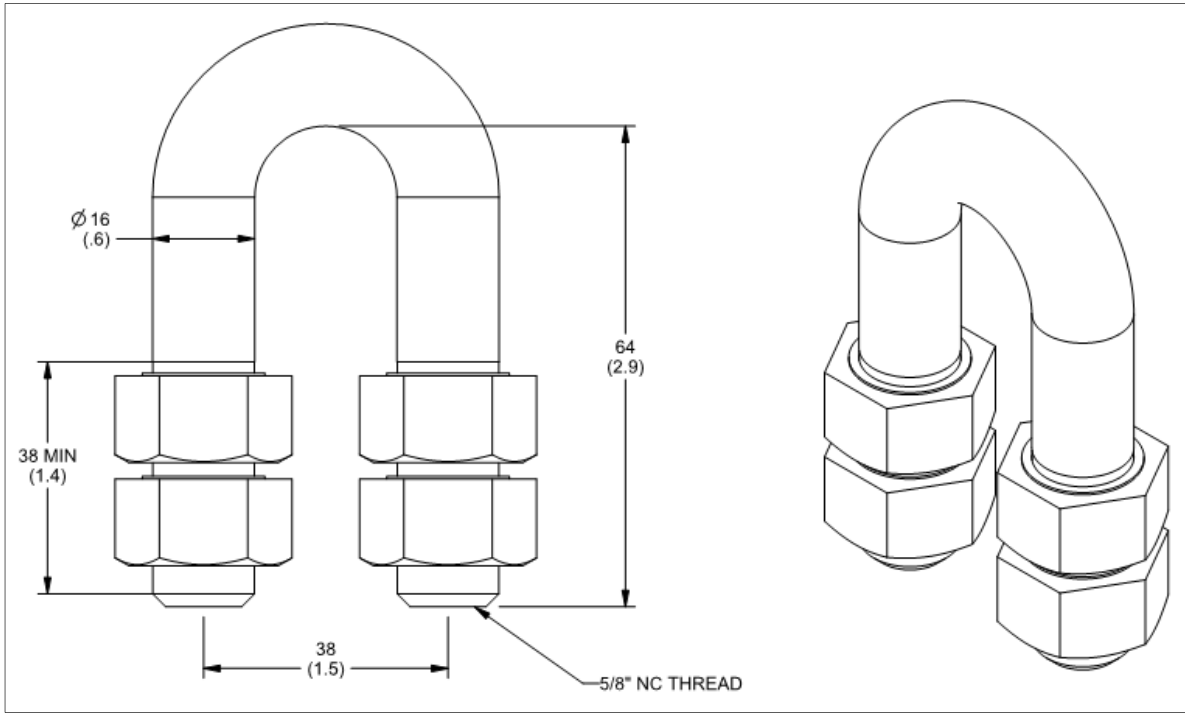
Catalog Number	A mm (in)	B mm (in)	C mm (in)	D mm (in)	E mm (in)	T mm (in)	L mm (in)	Thread Dia. in UNC	Ultimate Strength kN (lbs)	Estimated Assembly Weight kg (lbs)
GRU-11566	130 (5.1)	130 (5.1)	58 (2.3)	16 (0.6)	13 (0.5)	125 (4.9)	250 (9.8)	5/8-11	111 (36,000)	9.1 (20.1)
GRU-11610	70 (2.8)	124 (4.9)	76 (3.0)	19 (0.7)	8 (0.3)	125 (4.9)	250 (9.8)	3/4-10	160 (36,000)	1.8 (4.0)
GRU-11612	176 (6.9)	176 (6.9)	76 (3.0)	19 (0.7)	8 (0.3)	100 (3.9)	300 (11.8)	3/4-10	160 (36,000)	3.5 (7.7)
GRU-11613	100 (3.9)	180 (7.1)	76 (3.0)	19 (0.7)	8 (0.3)	100 (3.9)	300 (11.8)	3/4-10	160 (36,000)	2.6 (5.7)
GRU-11614	176 (6.9)	176 (6.9)	76 (3.0)	19 (0.7)	8 (0.3)	100 (3.9)	355 (14.0)	3/4-10	160 (36,000)	3.8 (8.4)

GRU-11XXX meets Charpy Level 1 specifications
(For Charpy Level specifications, see page 4)

Component	Material
U-Bolt	Galvanized Steel
Hex Nut	Galvanized Steel
Plate	Galvanized Steel



UB-11503



Catalog Number	Rated Strength kN (lbs)	Ultimate Strength kN (lbs)	Estimated Assembly Weight kg (lbs)
UB-11503	96 (21,600)	111 (25,000)	0.8 (1.8)

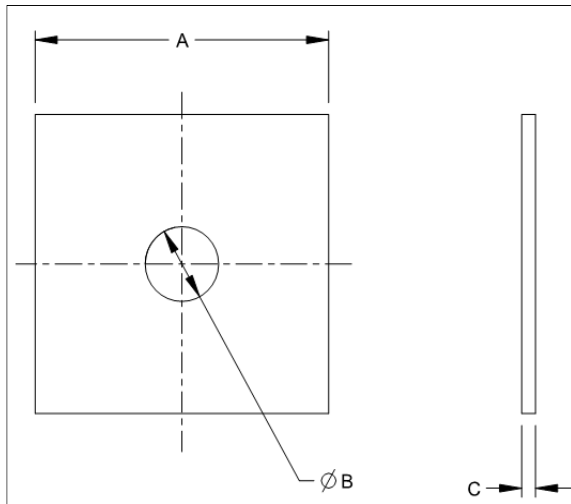
UB-11503 meets Charpy Level 1 specifications
(For Charpy Level specifications, see page 4)

Component	Material
U-Bolt	Galvanized Steel
Hex Nut	Galvanized Steel

Square Washers: Plate and Curved

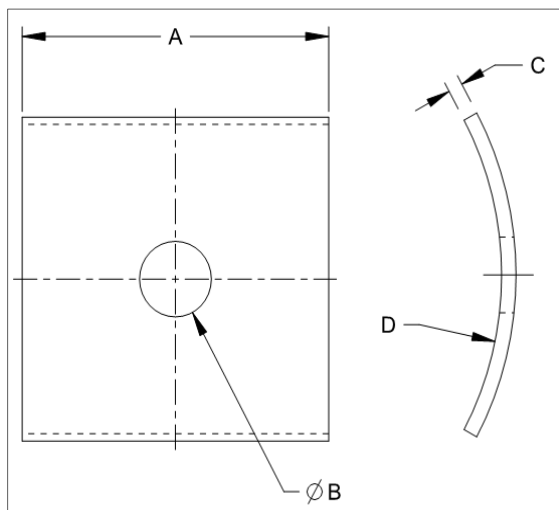
Plate and Curved washers are used in conjunction with Machine, Double Arming, Oval Eye and Thimble Eye bolts.

Plate



Catalog Number	A mm (in)	Ø B in	C in
FWSQ-002-916-125	51 (2.0)	9/16	1/8
FWSQ-002-1116-125		11/16	1/8
FWSQ-002-1116-188		11/16	3/16
FWSQ-002-1316-188		13/16	3/16
FWSQ-002-1332-188		13/32	3/16
FWSQ-002-1416-188		7/8	3/16
FWSQ-225-1116-188	57 (2.3)	11/16	3/16
FWSQ-225-1316-188	57 (2.3)	13/16	3/16
FWSQ-003-1316-188	76 (3.0)	13/16	3/16
FWSQ-003-1316-250	76 (3.0)	13/16	1/4
FWSQ-004-1316-250	102 (4.0)	13/16	1/4
FWSQ-004-1516-125		15/16	3/16
FWSQ-004-1516-188		15/16	3/16
FWSQ-004-1516-375		15/16	3/8

Curved



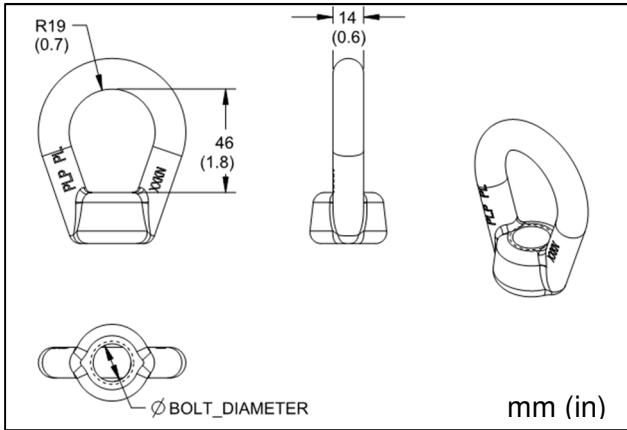
Catalog Number	A mm (in)	Ø B in	C in	D mm (in)
CWSQ-150-1316-250	51 (2.0)	13/16	1/4	38 (1.5)
CWSQ-225-1116-188	57 (2.3)	11/16	3/16	57 (2.3)
CWSQ-003-1116-188	76 (3.0)	11/16	3/16	76 (3.0)
CWSQ-003-1116-250		11/16	1/4	
CWSQ-003-1316-250		13/16	1/4	
CWSQ-004-1316-188	102 (4.0)	13/16	3/16	102 (4.0)
CWSQ-004-1316-250		13/16	1/4	
CWSQ-004-1316-375		13/16	3/8	
CWSQ-004-1516-250		15/16	1/4	
CWSQ-004-1516-375		15/16	3/8	
CWSQ-005-1516-375	127 (5.0)	15/16	3/8	127 (5.0)
CWSQ-006-1316-250	152 (6.0)	13/16	1/4	152 (6.0)
CWSQ-006-1316-500		13/16	1/2	

Preformed Line Products (Canada) Limited

Visit our website at: www.preformed.ca Email: sales@preformed.ca
 1711 Bishop Street North, Cambridge, Ontario, Canada, N1T 1N5
 Phone: 519-740-6666 Fax: 519-740-7917

Eye Nut

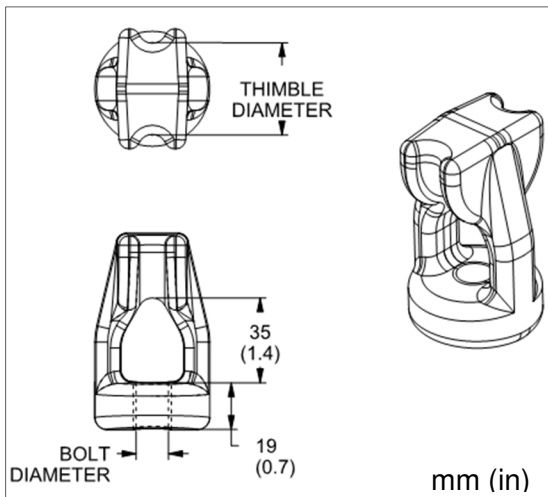
Oval Eye



Catalog Number	Fits Bolt Ø in	Rated Strength kN (lbs)	Ultimate Strength kN (lbs)	Estimated Part Weight kg (lbs)
EN-5C	5/8	54 (12,000)	63 (14,200)	0.3 (0.7)
EN-6C	3/4	84 (18,900)	98 (22,000)	0.3 (0.7)

Component	Material
Body	Galvanized Forged Steel

Thimble Eye



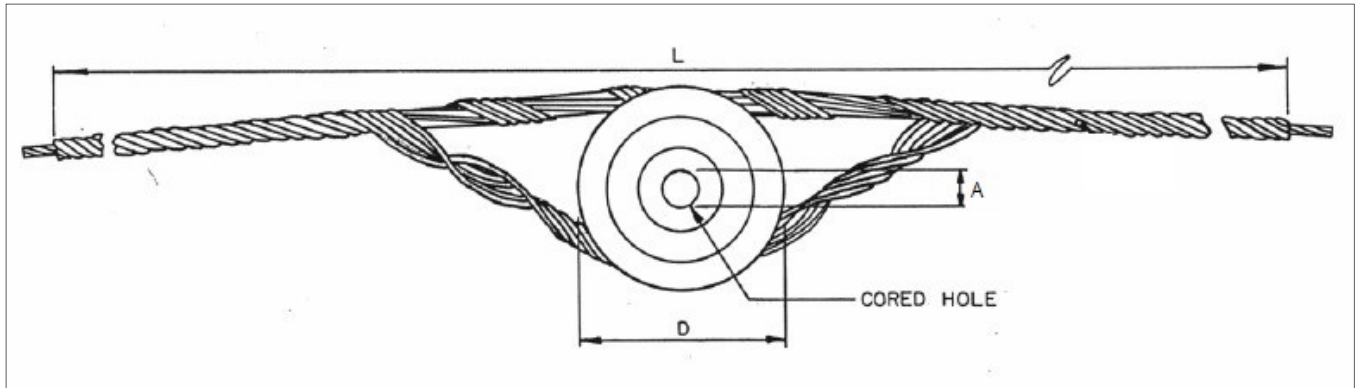
Catalog Number	Fits Bolt Ø in	Thimble Ø mm (in)	Max Strand Size in	Rated Strength kN (lbs)	Ultimate Strength kN (lbs)	Estimated Part Weight kg (lbs)
TEN-58C	5/8	38 (1.5)	1/2	54 (12,000)	63 (14,200)	0.6 (1.3)
TEN-34C	3/4	38 (1.5)	1/2	54 (12,000)	63 (14,200)	0.6 (1.3)

Component	Material
Body	Galvanized Forged Steel

All Eye Nuts meet Charpy Level 1 specifications
(For Charpy Level specifications, see page 4)

Twin Grip Suspension

Preformed Line Products Twin Grip suspension units are used to secure galvanized steel strand to the pole. Twin Grip Suspensions can be purchased with either an Aluminum or Galvanized Ductile Iron Sheave.

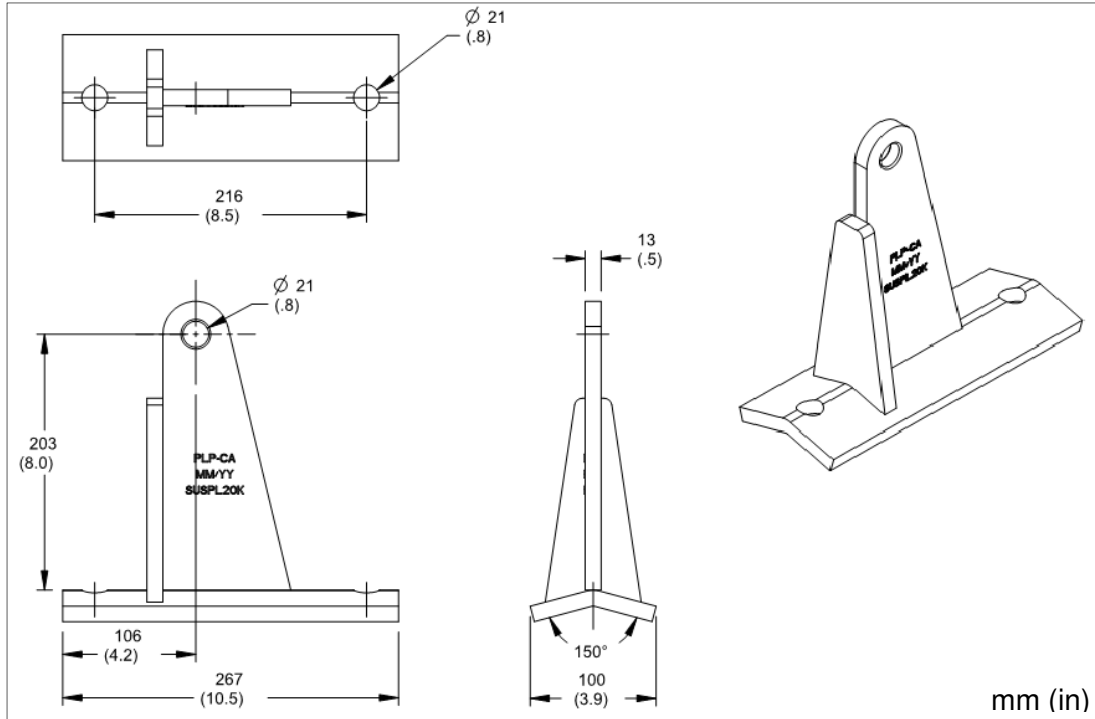


Catalog Number	Cable Diameter in	L Approximate Applied Length mm (in)	D Sheave Diameter in	Sheave Material	A Hole Diameter in	Sheave Number	Rod Number
TGS-2500	1/4	991 (39)	2 7/8	Aluminum	13/16	60213	4602100
TGSMS-3591D	1/4	991 (39)	2 7/8	Ductile Iron	13/16	T-60192	4602100
TGSMS-3591	1/4	991 (39)	2 7/8	Aluminum	11/16	60308	4602100
TGSMS-3591D11	1/4	991 (39)	2 7/8	Ductile Iron	11/16	T-60192A	4602100
TGS-2502	5/16	1016 (40)	2 7/8	Aluminum	13/16	60213	4602102
TGSMS-4855D	5/16	1016 (40)	2 7/8	Ductile Iron	13/16	T-60192	4602102
TGSMS-4855	5/16	1016 (40)	2 7/8	Aluminum	11/16	60308	4602102
TGSMS-4855D11	5/16	1016 (40)	2 7/8	Ductile Iron	11/16	T-60192A	4602102
TGS-2503	3/8	1321 (52)	3 3/8	Aluminum	13/16	60211	4602103
TGSMS-4856D	3/8	1321 (52)	3 3/8	Ductile Iron	13/16	T-60108	4602103
TGSMS-4856	3/8	1321 (52)	3 3/8	Aluminum	11/16	60309	4602103
TGSMS-4856D11	3/8	1321 (52)	3 3/8	Ductile Iron	11/16	T-60108A	4602103
TGS-2504	7/16	1346 (53)	3 3/8	Aluminum	13/16	60211	4602104
TGSMS-4857D	7/16	1346 (53)	3 3/8	Ductile Iron	13/16	T-60108	4602104
TGSMS-4857	7/16	1346 (53)	3 3/8	Aluminum	11/16	60309	4602104
TGSMS-4857D11	7/16	1346 (53)	3 3/8	Ductile Iron	11/16	60197	4602104
TGSMS-4858D11	1/2	1829 (72)	3 3/8	Ductile Iron	11/16	T-60108A	4602105
TGS-2505	1/2	1829 (72)	4 1/2	Aluminum	13/16	60212	4602105

Preformed Line Products (Canada) Limited

Visit our website at: www.preformed.ca Email: sales@preformed.ca
 1711 Bishop Street North, Cambridge, Ontario, Canada, N1T 1N5
 Phone: 519-740-6666 Fax: 519-740-7917

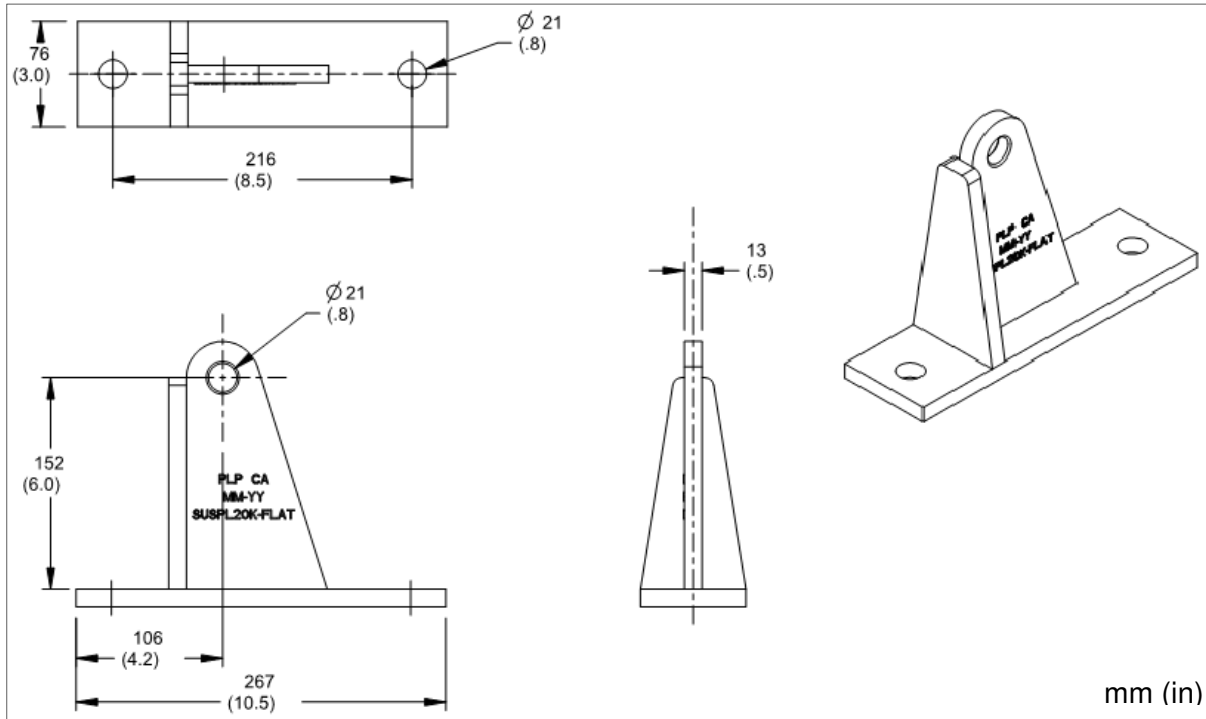
Suspension Plate



Catalog Number	Rated Breaking Strength kN (lbs)	Ultimate Strength kN (lbs)	Estimated Part Weight kg (lbs)	Material
SUSPL20K	75 (17,000)	89 (20,000)	5.0 (11.0)	Galvanized Steel
SUSPL20KC	75 (17,000)	89 (20,000)	5.0 (11.0)	Galvanized Steel

SUSPL20KC meets Charpy Level 1 specifications
(For Charpy Level specifications, see page 4)

Suspension Plate Flat



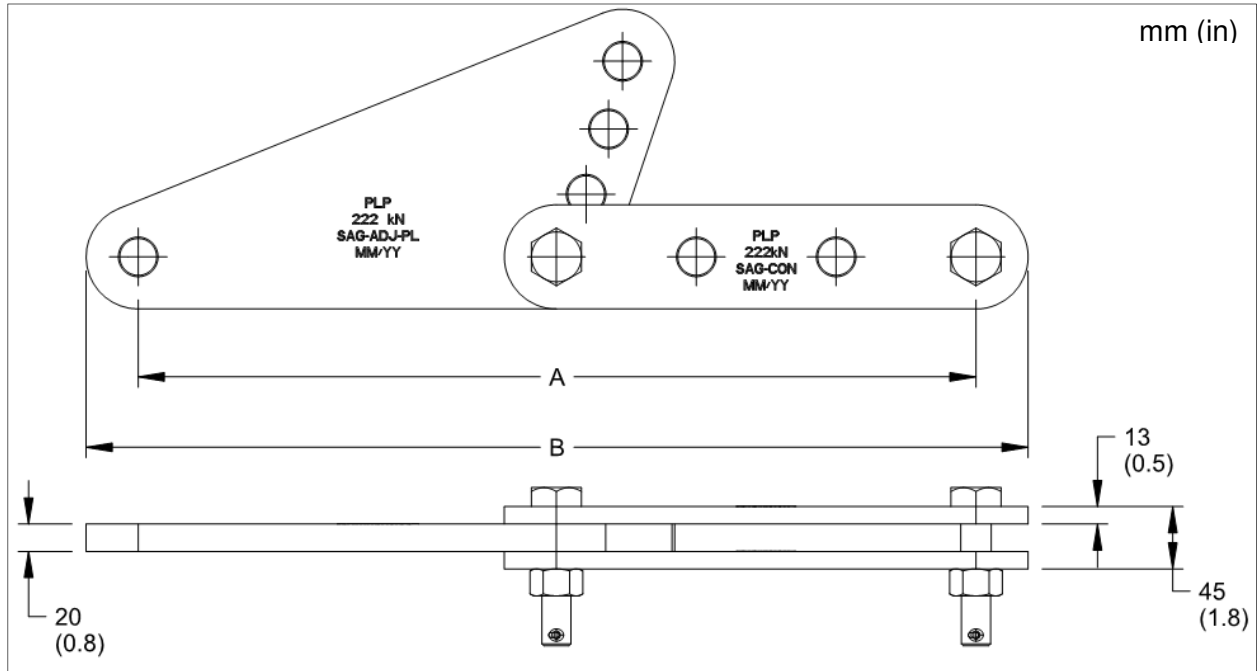
Catalog Number	Rated Breaking Strength kN (lbs)	Ultimate Strength kN (lbs)	Estimated Part Weight kg (lbs)	Material
SUSPL20K-FLAT	75 (17,000)	89 (20,000)	4.1 (9.0)	Galvanized Steel

SUSPL20K-FLAT meets Charpy Level 1 specifications
(For Charpy Level specifications, see page 4)

Sag Adjustment Assembly

Sag Adjustment Assemblies are used to equalize the tension of bundled conductors.

SAG-ADJ-XXX



Catalog Number	A mm (in)	B mm (in)	Bolt \varnothing in	Adjustment mm (in)	Rated Strength kN (lbs)	Ultimate Strength kN (lbs)	Estimated Assembly Weight kg (lbs)
SAG-ADJ-155	611 (24.1)	687 (27.0)	7/8	280 (11.0)	222 (49,900)	255 (57,300)	12.7 (28.0)
SAG-ADJ-50K	631 (24.8)	697 (27.4)	3/4	293 (11.5)	222 (49,900)	255 (57,300)	12.7 (28.0)

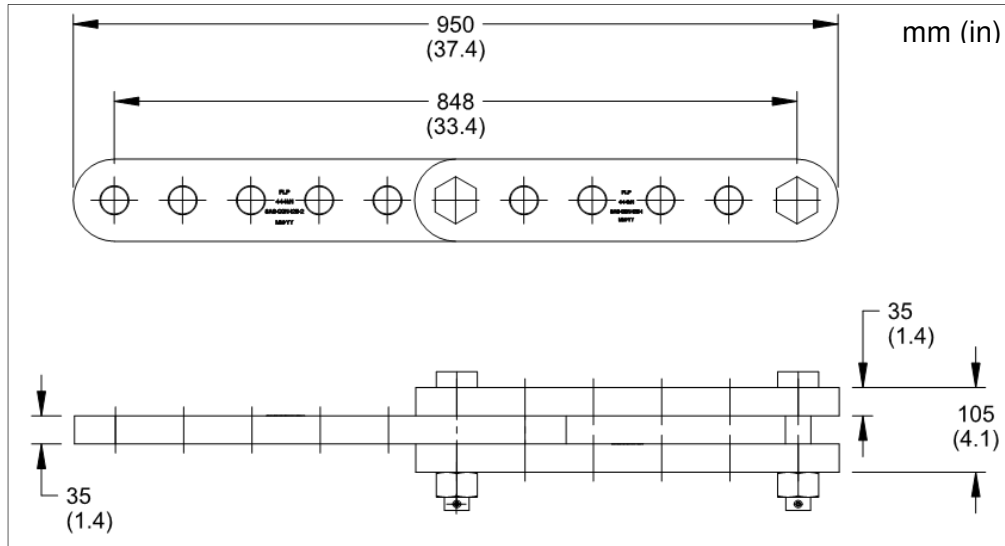
Meets CSA C83 requirements for energy absorption/toughness.

SAG-ADJ-XXX meets Charpy Level 1 specifications
 Add -L2 suffix (SAG-ADJ-XXX-L2) for parts which meet Charpy Level 2 specifications
 (For Charpy Level specifications, see page 4)

Component	Material
Body	Galvanized Steel
Bolt	Galvanized Steel
Cotter Pins	Stainless Steel



SAG-ADJ-100K



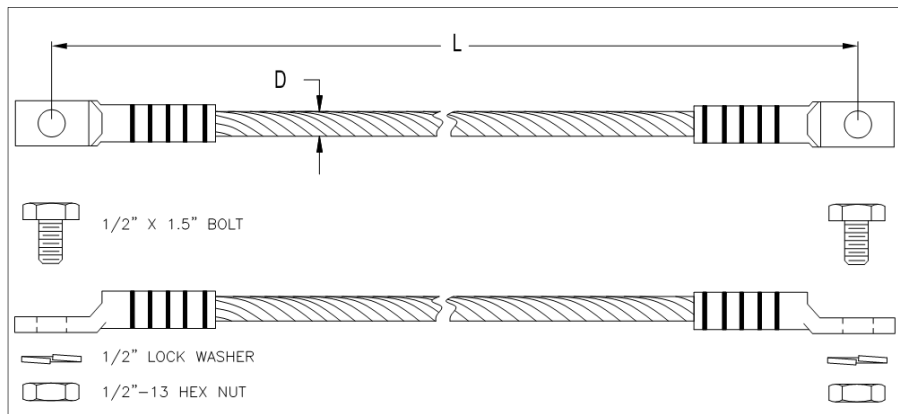
Catalog Number	Bolt \varnothing in	Adjustment mm (in)	Rated Strength kN (lbs)	Ultimate Strength kN (lbs)	Estimated Assembly Weight kg (lbs)
SAG-ADJ-100K	1-1/4	255 (10.0)	444 (100,000)	511 (114,000)	41.0 (90.0)

Meets CSA C83 requirements for energy absorption/toughness.

SAG-ADJ-100K meets Charpy Level 1 specifications
 Add -L2 suffix (SAG-ADJ-100K-L2) for parts which meet
 Charpy Level 2 specifications
 (For Charpy Level specifications, see page 4)

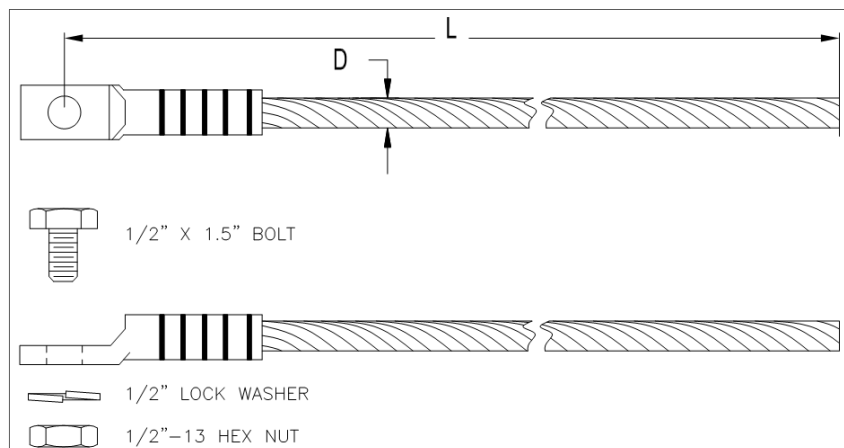
Component	Material
Body	Galvanized Steel
Bolt	Galvanized Steel
Cotter Pins	Stainless Steel

Flexible Ground Wire Assemblies



Catalog Number	L Length mm (ft)	D Diameter in	Description	Estimated Assembly Weight kg (lbs)
710010015SS	1258 (4.3)	1/2	#4, 7 strand x 85 strand, 32 gauge, tinned Copper with 2 lugs	0.9 (1.9)
710010015SP	1271 (4.2)	7/16	1/0, 19 strand x 60 strand, 30 gauge, tinned Copper, with 2 lugs	0.4 (0.9)

Note: 2 bolts, 2 lock washers and 2 hex nuts (as shown) are included in each assembly.

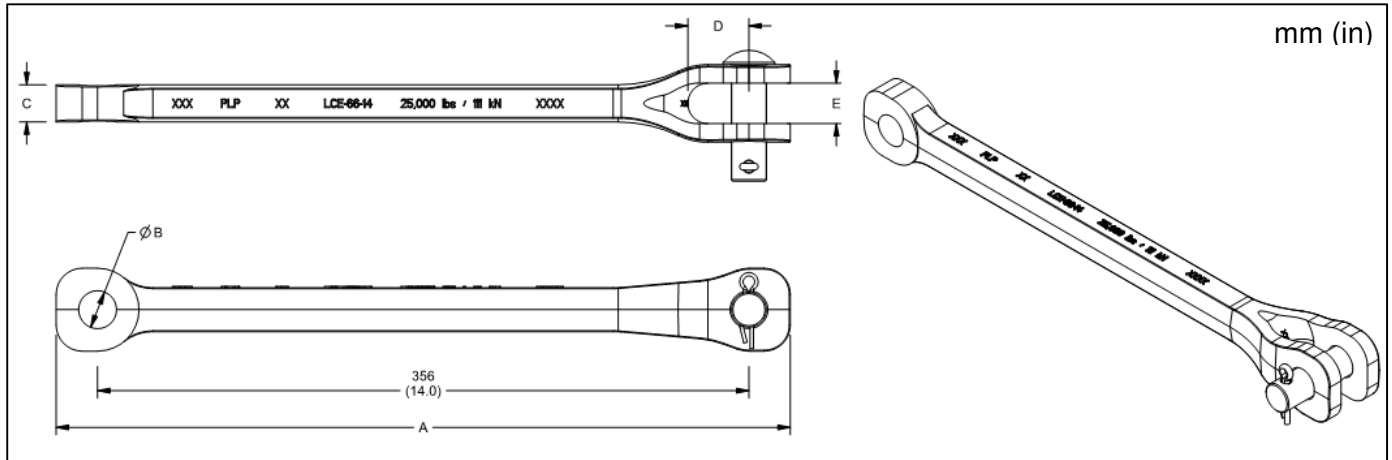


Catalog Number	L Length mm (ft)	D Diameter in	Description	Estimated Assembly Weight kg (lbs)
710010015SS-2.0-1	610 (2)	1/4	#4, 7 strand x 85 strand, 32 gauge, tinned Copper with 1 lug	0.4 (0.9)

Note: 1 bolt, 1 lock washer and 1 hex nut (as shown) are included in each assembly.

Preformed Line Products (Canada) Limited
 Visit our website at: www.preformed.ca Email: sales@preformed.ca
 1711 Bishop Street North, Cambridge, Ontario, Canada, N1T 1N5
 Phone: 519-740-6666 Fax: 519-740-7917

Extension Link



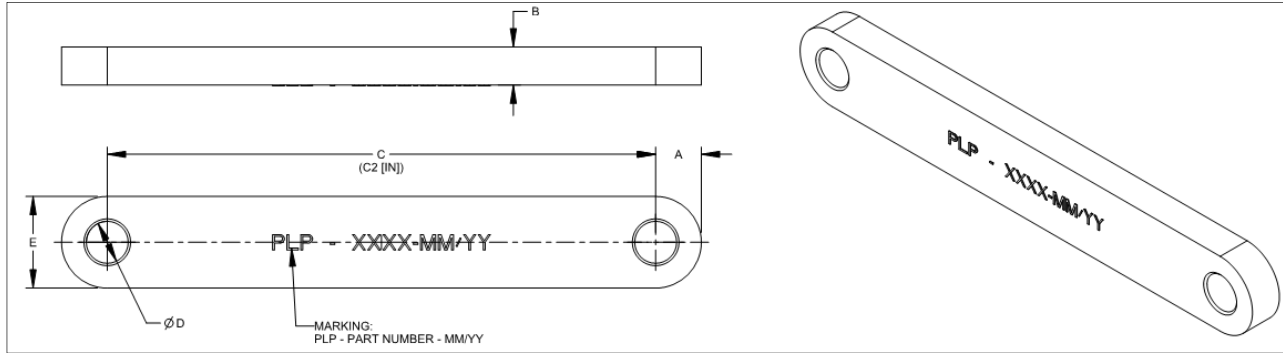
Catalog Number	A mm (in)	B mm (in)	C mm (in)	D mm (in)	E mm (in)	Bolt or Pin \varnothing in	Rated Strength kN (lbs)	Ultimate Strength kN (lbs)	Estimated Assembly Weight kg (lbs)
71002366C	394 (1.3)	17.5 (0.06)	15.7 (0.05)	31 (0.1)	19 (0.06)	5/8	130 (29,200)	149 (33,400)	1.1 (2.4)

71002366C meets CSA C83 requirements for energy absorption/toughness and Charpy Level 1 specifications
 Add -L2 suffix (71002366C-L2) for parts which meet
 Charpy Level 2 specifications

(For Charpy Level specifications, see page 4)

Catalog Number	Component	Material
71002366C	Body	Galvanized Steel
	Bolt	Galvanized Steel
	Cotter Pin	Stainless Steel

Extension Strap



ES-XX-XXC(-L2)

STRENGTH RATING (x 1000 LBS) ——— CHARPY LEVEL 2 OPTION
 ——— DISTANCE BETWEEN HOLE CENTERS (IN)
 (DIMENSION "C2")
 * DIMENSION IN INCHES

Catalog Number	A mm (in)	B mm (in)	C (C2)	D mm (in)	E mm (in)	Rated Strength kN (lbs)	Ultimate Strength kN (lbs)
ES-30-05CX500	38 (1.5)	13 (0.5)	152 (6.0)	21 (0.7)	51 (2.0)	116 (25,500)	133 (30,000)
ES-50-05CX750	38 (1.5)	19 (0.8)	152 (6.0)	21 (0.7)	51 (2.0)	193 (43,400)	222 (50,000)
ES-30-06C	25 (1.0)	13 (0.5)	152 (6.0)	22 (0.7)	51 (2.0)	116 (25,500)	133 (30,000)
ES-30-09C	19 (0.8)	16 (0.6)	229 (9.0)	18 (0.7)	38 (1.5)	116 (25,500)	133 (30,000)
ES-30-12C	32 (1.3)	16 (0.6)	305 (12.0)	21 (0.8)	64 (2.5)	116 (25,500)	133 (30,000)
ES-30-14C	25 (1.0)	16 (0.6)	356 (14.0)	18 (0.7)	51 (2.0)	116 (25,500)	133 (30,000)
ES-30-48C	32 (1.3)	16 (0.6)	1219 (48.0)	21 (0.8)	64 (2.5)	116 (25,500)	133 (30,000)
ES-50-06C	38 (1.5)	19 (0.8)	152 (6.0)	21 (0.8)	76 (3.0)	222 (50,000)	255 (57,300)
ES-50-09C	38 (1.5)	19 (0.8)	229 (9.0)	21 (0.8)	76 (3.0)	222 (50,000)	255 (57,300)
ES-50-16C	32 (1.3)	19 (0.8)	406 (16.0)	21 (0.8)	64 (2.5)	222 (50,000)	255 (57,300)
ES-50-24C	32 (1.3)	19 (0.8)	610 (24.0)	21 (0.8)	64 (2.5)	222 (50,000)	255 (57,300)
ES-60-06C	38 (1.5)	19 (0.8)	152 (6.0)	23 (0.9)	76 (3.0)	267 (60,000)	307 (69,000)
ES-60-12C	38 (1.5)	19 (0.8)	305 (12.0)	23 (0.9)	76 (3.0)	267 (60,000)	307 (69,000)

Preformed Line Products (Canada) Limited

Visit our website at: www.preformed.ca Email: sales@preformed.ca
 1711 Bishop Street North, Cambridge, Ontario, Canada, N1T 1N5
 Phone: 519-740-6666 Fax: 519-740-7917



PREFORMED LINE PRODUCTS

Catalog Number	A mm (in)	B mm (in)	C (C2*)	D mm (in)	E mm (in)	Rated Strength kN (lbs)	Ultimate Strength kN (lbs)
ES-75-16C	38 (1.7)	25 (1.0)	406 (16.0)	31 (1.2)	76 (3.0)	333 (75,000)	383 (86,100)
ES-75-32C	43 (1.7)	25 (1.0)	813 (32.0)	31 (1.2)	86 (3.4)	333 (75,000)	383 (86,100)
ES-100-09C	51 (2.0)	25 (1.0)	229 (9.0)	34 (1.3)	102 (4.0)	444 (100,000)	511 (114,900)
ES-100-18C	51 (2.0)	25 (1.0)	457 (18.0)	34 (1.3)	102 (4.0)	444 (100,000)	511 (114,900)

Contact PLP for any other configurations and estimated part weights

Meets CSA C83 requirements for energy absorption/toughness

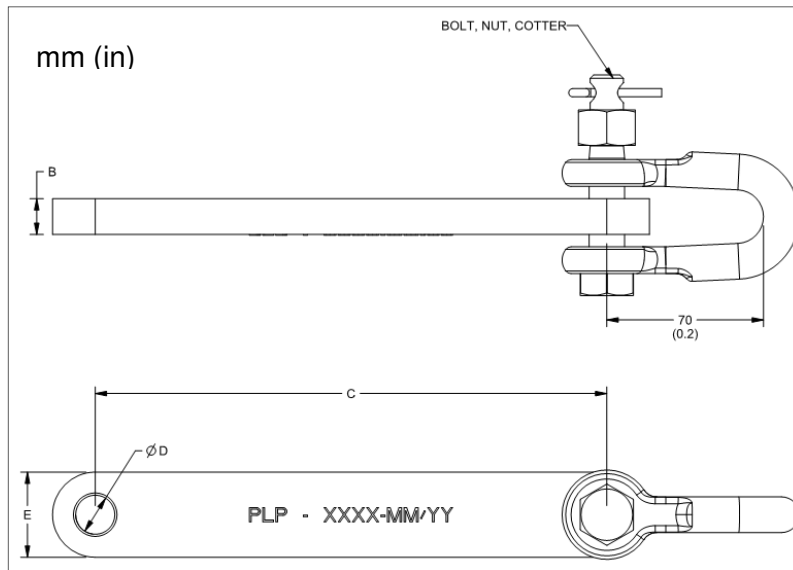
ES-XX-XXC meets Charpy Level 1 specifications
 Add -L2 suffix (ES-XX-XXC-L2) for parts which meet
 Charpy Level 2 specifications

Component	Material
Body	Galvanized Steel

(For Charpy Level specifications, see page 4)



Extension Straps with Anchor Shackle(s)



ES-30-XXCAS (X2)

DISTANCE BETWEEN
HOLE CENTERS C (IN)

OPTIONAL:
ASSEMBLY CONTAINING
TWO (2) SHACKLES

Catalog #	B mm (in)	C	D mm (in)	E mm (in)	Bolt Ø in	AS-133C Shackle Quantity	Rated Strength kN (lbs)	Ultimate Strength kN (lbs)
ES-30-09CAS	13 (0.5)	229 (9.0)	18 (0.7)	51 (2.0)	5/8	1	116 (25,500)	133 (30,000)
ES-30-14CAS	16 (0.6)	356 (14.0)	21 (0.8)	51 (2.0)	5/8	1	133 (30,000)	153 (34,500)

Contact PLP for any other configurations and estimated part weights

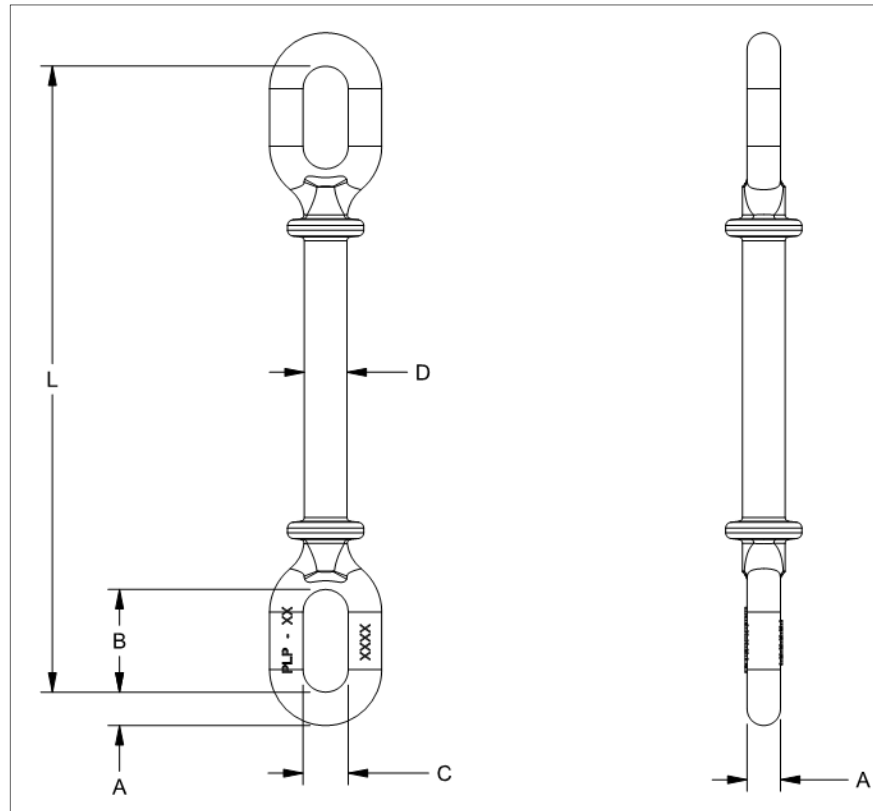
ES-30-XXCASXX meets Charpy Level 1 specifications

(For Charpy Level specifications, see page 4)

Component	Material
Extension Strap	Galvanized Steel
Anchor Shackle	Forged Galvanized Steel

Preformed Line Products (Canada) Limited
 Visit our website at: www.preformed.ca Email: sales@preformed.ca
 1711 Bishop Street North, Cambridge, Ontario, Canada, N1T 1N5
 Phone: 519-740-6666 Fax: 519-740-7917

Eye-Eye Link



EEL-XXX-XXC

STRENGTH RATING (kN) LENGTH L (in)

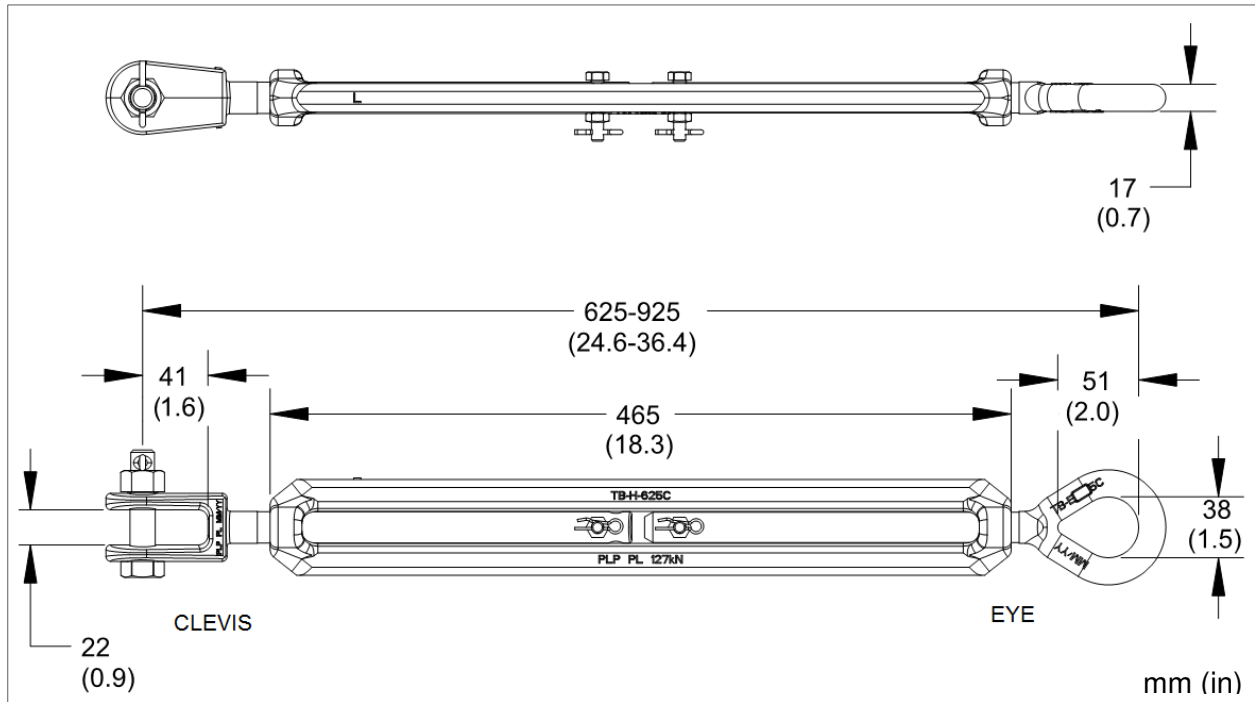
Catalog Number	A mm (in)	B mm (in)	C mm (in)	D mm (in)	L mm (in)	Rated Strength kN (lbs)	Ultimate Strength kN (lbs)
EEL-120-12C	18 (0.7)	54 (2.1)	24 (0.9)	22 (0.9)	305 (12)	120 (27,000)	138 (31,000)
EEL-220-12C	24 (0.9)	63 (2.5)	29 (1.1)	25 (1.0)	305 (12)	220 (49,400)	253 (56,800)

EEL-XXX-12C meets Charpy Level 1 specifications
(For Charpy Level specifications, see page 4)

Component	Material
Body	Forged Galvanized Steel

Preformed Line Products (Canada) Limited
 Visit our website at: www.preformed.ca Email: sales@preformed.ca
 1711 Bishop Street North, Cambridge, Ontario, Canada, N1T 1N5
 Phone: 519-740-6666 Fax: 519-740-7917

Turnbuckles



Catalog Number	Attachment Type	Bolt \varnothing in	Rated Strength kN (lbs)	Ultimate Strength kN (lbs)	Estimated Assembly Weight kg (lbs)
TBCC-625C	Clevis - Clevis	5/8	127 (28,500)	146 (32,800)	5.5 (21.1)
TBCE-625C	Clevis - Eye	5/8	127 (28,500)	146 (32,800)	4.5 (10.0)
TBEE-625C	Eye - Eye	N/A	127 (28,500)	146 (32,800)	4.3 (9.5)

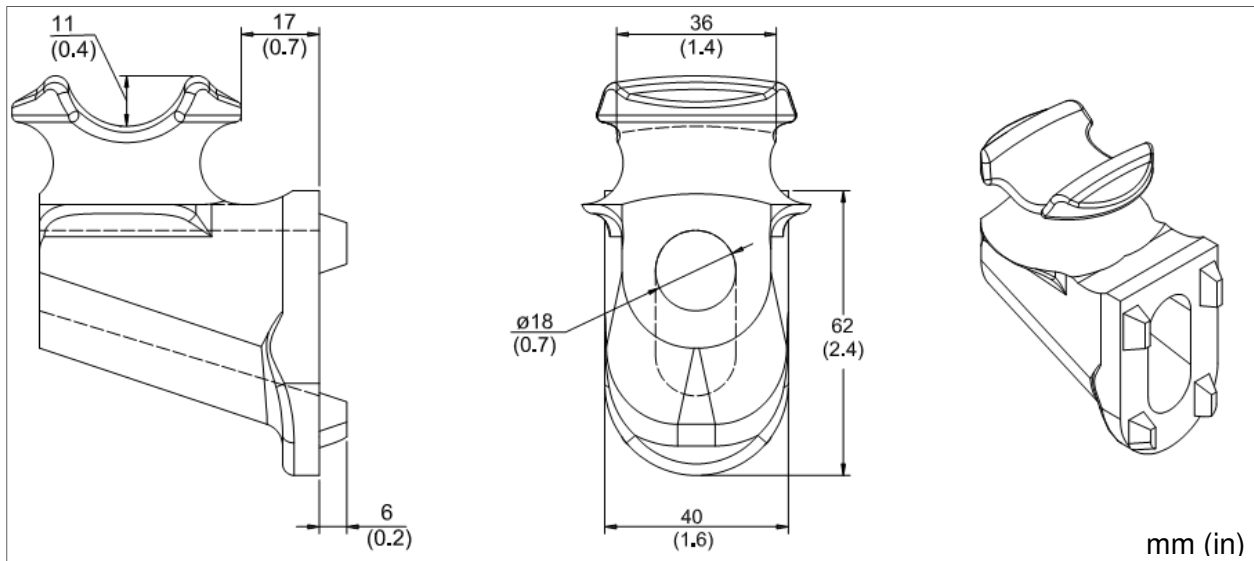
TBXX-625C meets Charpy Level 2 specifications

(For Charpy Level specifications, see page 4)

Tie Top Neutral Wire Bracket

Non-insulated neutral wire brackets are used on rural lines. They accommodate up to 1/2" or smaller neutral wires that are tied into the groove.

A 5/8" lag or through bolt is required to attach the bracket to the pole.



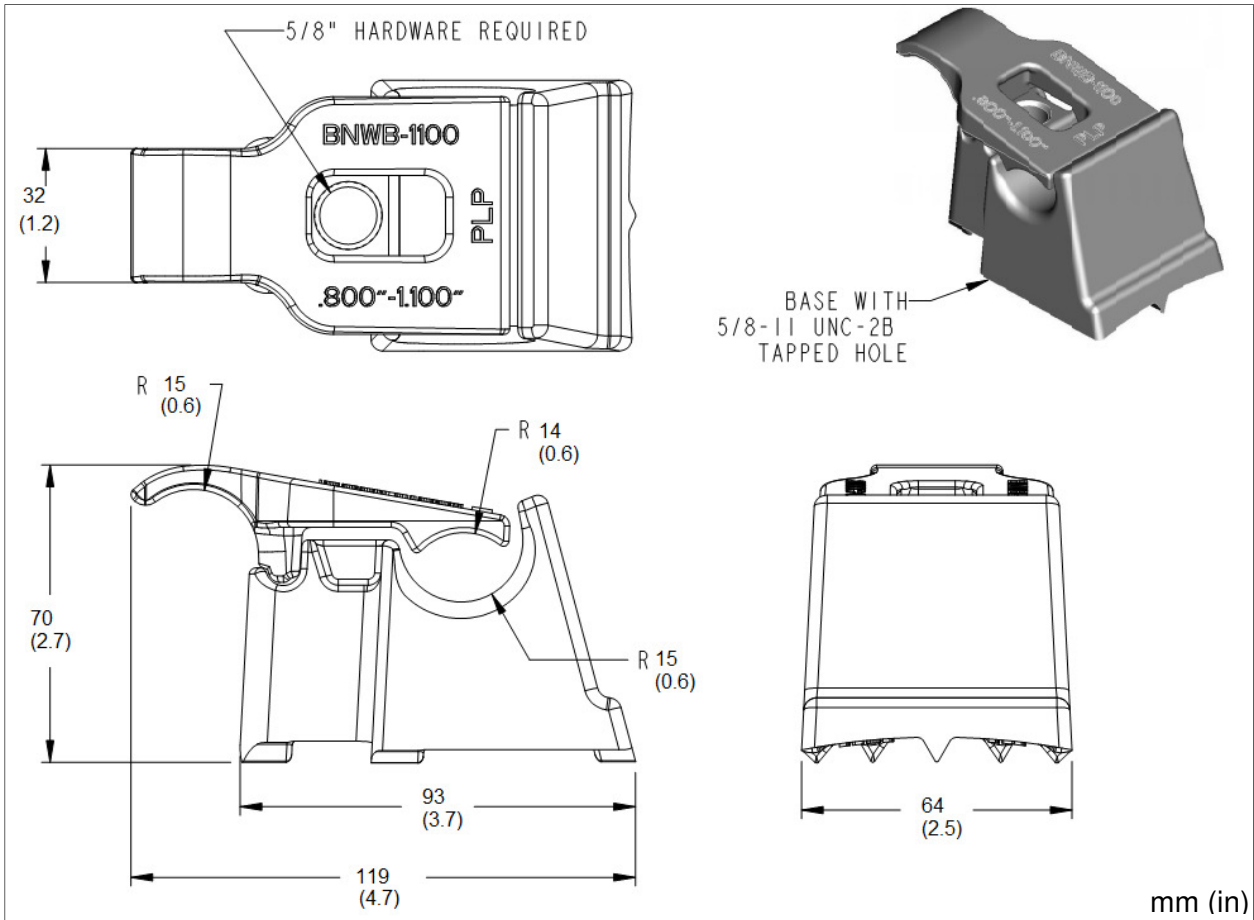
Catalog Number	Max Strand Size in	Material	Estimated Part Weight kg (lbs)
T-NWB-5A	1/2	Aluminum Alloy	0.2 (0.4)

T-NWB-5A is tested to CSA-C83 specifications

Bolted Neutral Wire Bracket with Clamp

The bolted neutral wire bracket (with clamp) is advantageous over the tie top neutral wire bracket because it does not require tie wire due to its clamping mechanism.

A 5/8" threaded bolt is required to attach the bracket to the pole. The base is threaded.

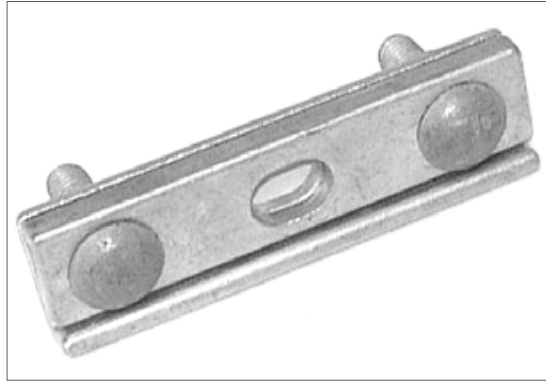


Catalog Number	Neutral Wire Diameter	Material	Estimated Part Weight kg (lbs)
BNWB-1100	0.800"-1.100"	Aluminum Alloy	0.3 (0.7)

Contact PLP Canada for additional sizes.

Clamp: Cable Suspension

Cable Suspension Clamps are used with through bolts which serve as a clamping member and are shaped to securely grip messenger wire to the pole. A nut and square washer is used between the clamp and the pole to provide proper spacing.



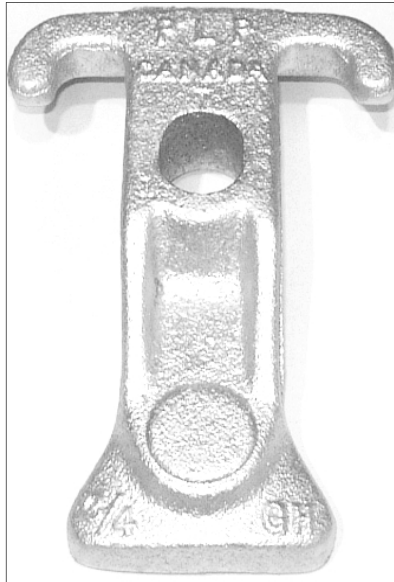
Catalog Number	Bolt Quantity	Clamp Bolt Diameter in	Clamp Length mm (in)	Mounting Hole Diameter in	Strand Diameter in	Estimated Part Weight kg (lbs)
B-CSC-8	2	1/2	140 (5.5)	11/16 x 15/16	1/4 - 7/16	0.7 (1.5)

B-CSC-8 is tested to CSA-C83 specifications.

Guy Hook

Guy hooks are used to secure guy wires to pole structures. Guy hooks have cast integral spurs on the back to grip the pole to eliminate turning of the guy hook.

They can be mounted with either a 5/8" or 3/4" bolt.

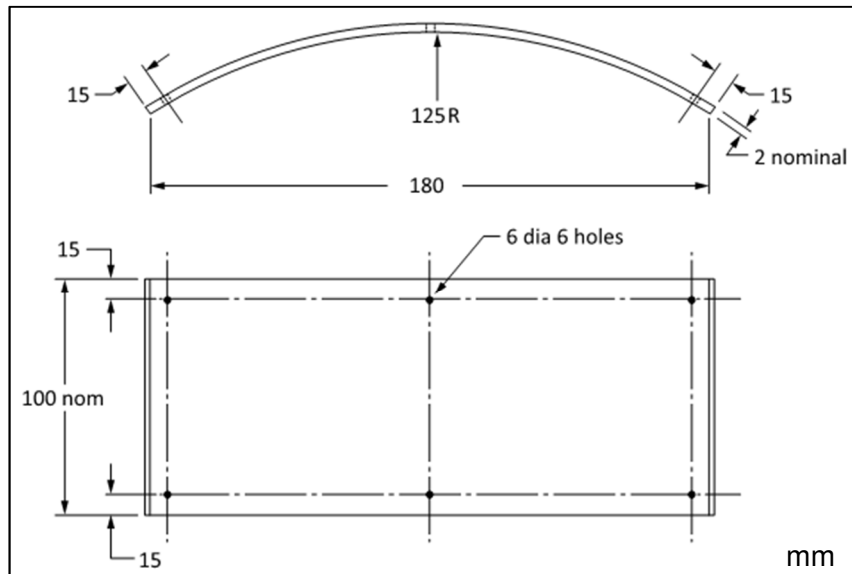


Catalog Number	Material	Estimated Part Weight kg (lbs)
GH-34	Galvanized Ductile Iron	0.8 (1.8)

Meets CSA-C83 specifications.

Strain Plate

The pole guard is normally used with a guy hook for wraparound guying of wood poles.

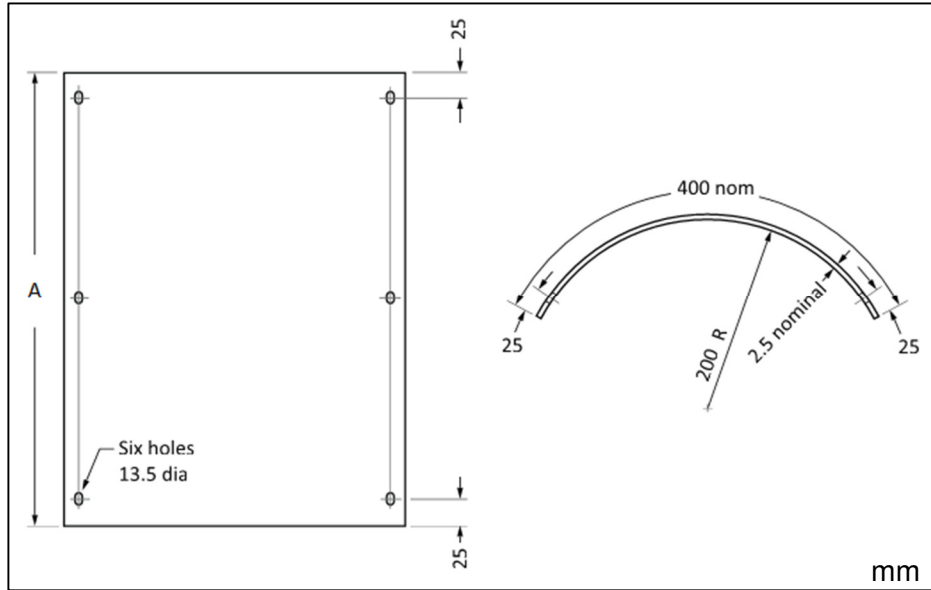


Catalog Number	Material	Estimated Part Weight kg (lbs)
SP-01	Galvanized Steel	1.1 (2.4)

Meets CSA-C83 specifications.

Pole Guard

The pole guard is normally used to protect a pole base from impact damage. It is mounted to the pole using 1/2" hardware.

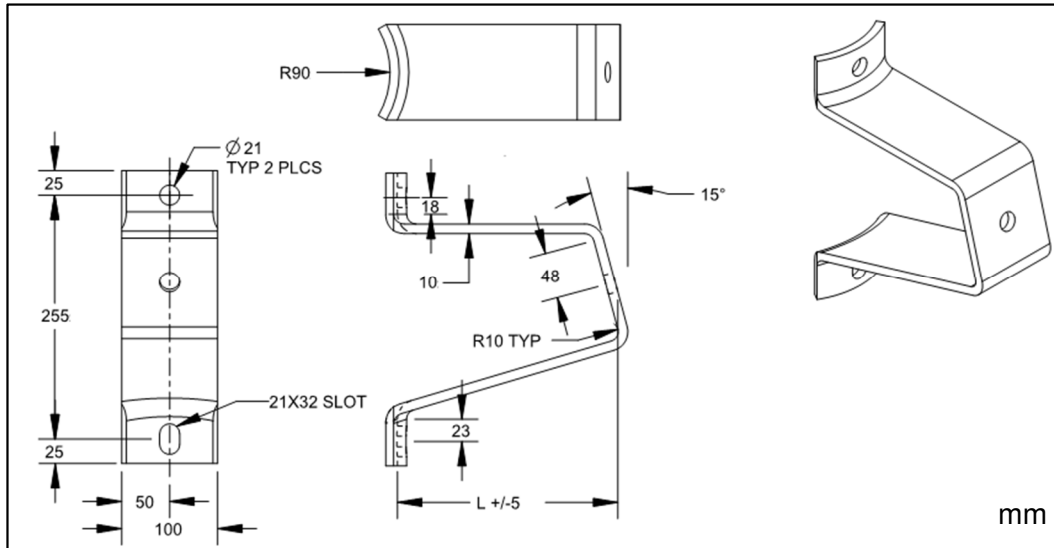


Catalog Number	A mm (in)	Estimated Part Weight kg (lbs)	Material
PG-01	457 (18.0)	3.9 (8.5)	Galvanized Steel
PG-02	762 (30.0)	6.5 (14.2)	

Meets CSA-C83 specifications.

Standoff Bracket

This bracket is normally used for supporting a post type insulator on a pole. It is mounted to the pole using 3/4" hardware.



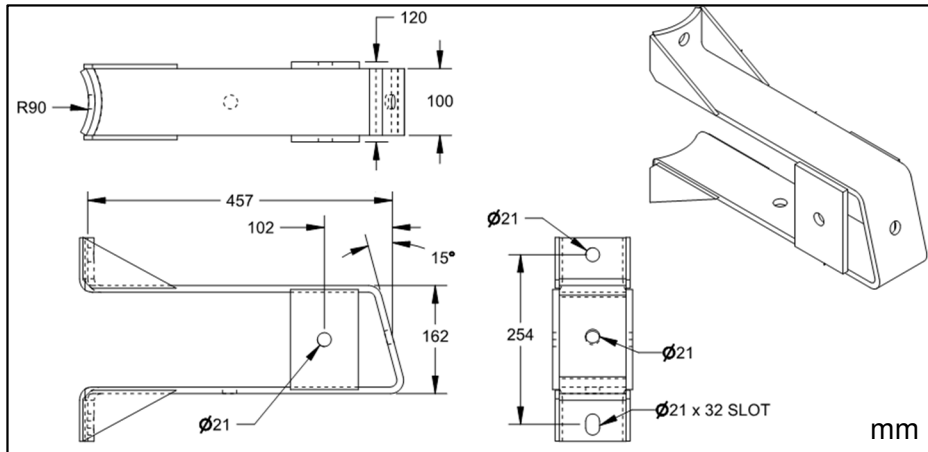
Catalog Number	L mm (in)	Estimated Part Weight kg (lbs)	Material
SB3	75 (3.0)	3.0 (6.6)	Galvanized Steel
SB9	230 (9.0)	5.2 (11.4)	
SB18	460 (18.0)	9.2 (20.2)	

Meets CSA-C83 specifications.



18" Standoff Bracket Assembly

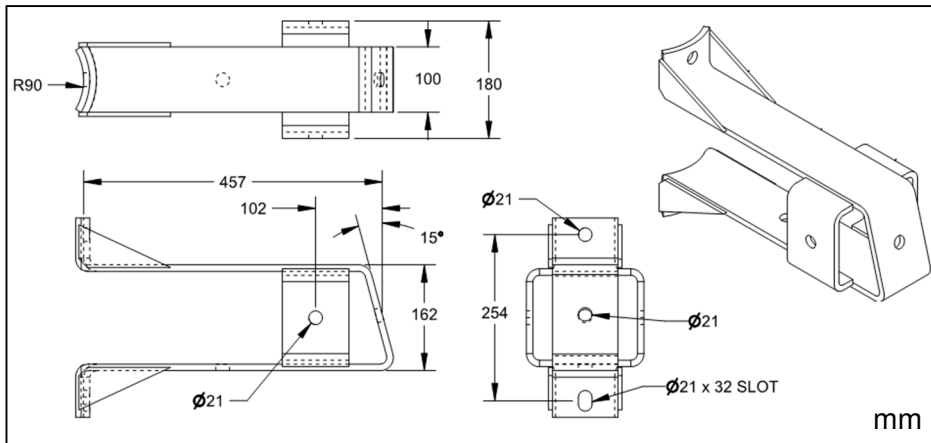
Flush



Catalog Number	Material	Estimated Part Weight kg (lbs)
SB18F	Galvanized Steel	12.5 (27.6)

Meets CSA-C83 specifications.

Offset



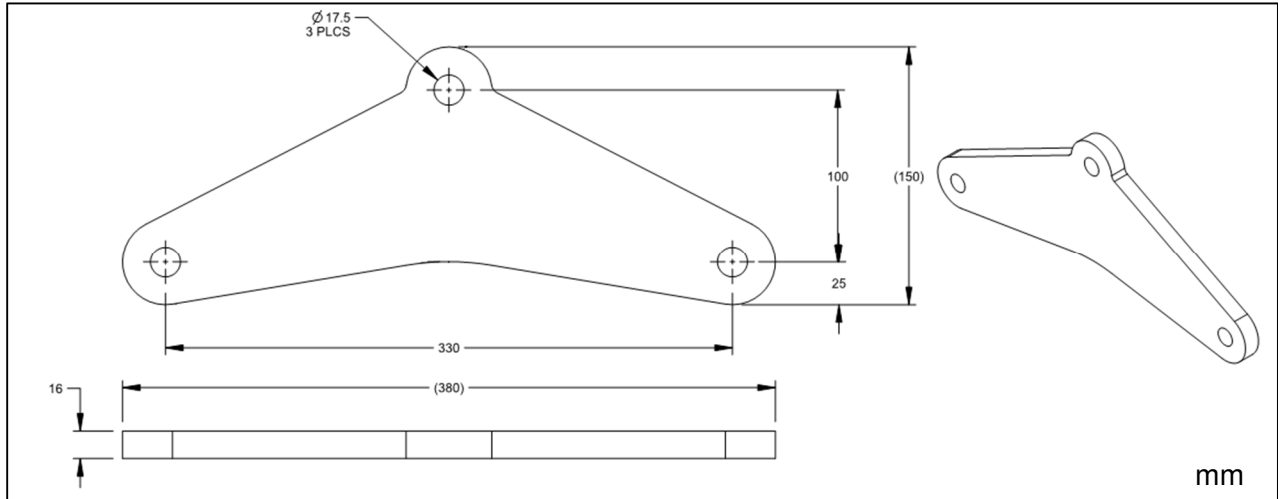
Catalog Number	Material	Estimated Part Weight kg (lbs)
SB18O	Galvanized Steel	13.3 (29.2)

Meets CSA-C83 specifications.

Preformed Line Products (Canada) Limited
 Visit our website at: www.preformed.ca Email: sales@preformed.ca
 1711 Bishop Street North, Cambridge, Ontario, Canada, N1T 1N5
 Phone: 519-740-6666 Fax: 519-740-7917

Guying Plate

Guying plate is used whenever a guy must split to ensure clearance around pole mounted equipment.



Catalog Number	Rated Strength kN (lbs)	Ultimate Strength kN (lbs)	Material	Estimated Part Weight kg (lbs)
GP-330-18	120 (27,000)	138 (31,000)	Galvanized Steel	3.9 (8.6)

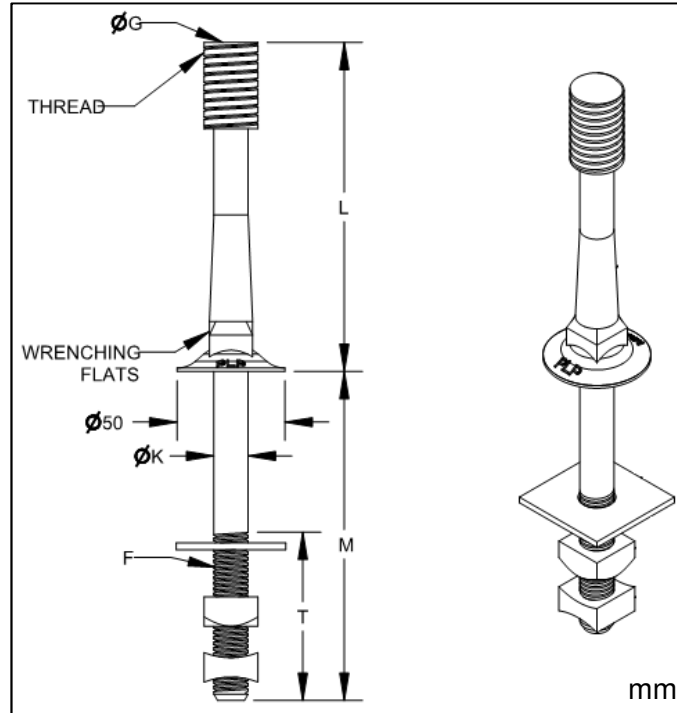
Meets CSA C83 requirements.

Add C suffix (GP-330-18C) for parts which meet Charpy level 1 specifications
(For Charpy Level specifications, see page 4)

Straight Crossarm Insulator pin

This pin is normally used to install pin type insulators on crossarms.

Assembly includes: one square washer, one square nut & one square locknut



Catalog Number	Thread Material	M mm (in)	T mm (in)	G mm (in)	L mm (in)	F (in)	K mm (in)	Weight kg (lbs)
FIP-02L	Lead	150	75	25	150	5/8-11	16 (0.63)	0.8
FIP-02N	Nylon	(5.9)	(3.0)	(1.0)	(5.9)			(1.6)

Meets CSA C83 requirements.

Component	Material
Body	Forged Galvanized Steel
Hardware	Galvanized Steel