

<http://waterheatertimer.org/How-to-wire-3-phase-electric.html>

<http://waterheatertimer.org/How-to-identify-transformer-wiring.html>

Wiring Diagrams

Sections I, II, III & IV

1 PRIMARY: 240 X 480
SECONDARY: 120/240
TAPS: None

Primary Volts	Connect Primary Lines To	Inter-Connect	Connect Secondary Lines To
480	H1-H4	H2 to H3	
240	H1-H3 & H2-H4		

Secondary Volts

Secondary Volts	Inter-Connect	Connect Secondary Lines To
240	X2 to X3	X1-X4
120/240	X2 to X3	X1-X2-X4
120	X1 to X3 X2 to X4	X1-X4

2 PRIMARY: 240 X 480
SECONDARY: 120/240
TAPS: None

Primary Volts	Connect Primary Lines To	Inter-Connect	Connect Secondary Lines To
480	H1-H4	H2 to H3	
240	H1-H3 & H2-H4		

Secondary Volts

Secondary Volts	Inter-Connect	Connect Secondary Lines To
240	X2 to X3	X1-X4
120/240	X2 to X3	X1-X2-X4
120	X1 to X3 X2 to X4	X1-X4

3 PRIMARY: 240 X 480
SECONDARY: 120/240
TAPS: 2, 2 1/2% ANFC, 2, 2 1/2% BNFC

Primary Volts	Connect Primary Lines To	Inter-Connect	Connect Secondary Lines To
252	H1-H8	H1 to H5 H4 to H8	
240	H1-H7	H1 to H5 H3 to H7	
228	H1-H6	H1 to H5 H2 to H6	
504	H1-H8	H4 to H5	
492	H1-H8	H3 to H5	
480	H1-H7	H3 to H5	
468	H1-H7	H2 to H5	
456	H1-H6	H2 to H5	

Secondary Volts

Secondary Volts	Inter-Connect	Connect Secondary Lines To
240	X2 to X3	X1-X4
120/240	X2 to X3	X1-X2-X4
120	X1 to X3 X2 to X4	X1-X4

4 PRIMARY: 240 X 480
SECONDARY: 120/240
TAPS: 2, 2 1/2% ANFC, 4, 2 1/2% BNFC

Primary Volts	Connect Primary Lines To	Inter-Connect	Connect Secondary Lines To
216	H1-H10	H1 to H9 H10 to H2	
228	H1-H10	H1 to H8 H10 to H3	
240	H1-H10	H1 to H7 H10 to H4	
252	H1-H10	H1 to H6 H10 to H5	
432	H1-H10	H2 to H9	
444	H1-H10	H3 to H9	
456	H1-H10	H3 to H8	
468	H1-H10	H4 to H8	
480	H1-H10	H4 to H7	
492	H1-H10	H5 to H7	
504	H1-H10	H5 to H6	

Secondary Volts

Secondary Volts	Inter-Connect	Connect Secondary Lines To
240	X2 to X3	X1-X4
120/240	X2 to X3	X1-X3-X4
120	X1 to X3 X2 to X4	X1-X4

5 PRIMARY: 240 X 480
SECONDARY: 120/240
TAPS: 2, 2 1/2% ANFC, 2, 2 1/2% BNFC

Primary Volts	Connect Primary Lines To	Inter-Connect	Connect Secondary Lines To
216	H1-H4	H1, H3, 8 & H2, H4, 1	
228	H1-H4	H1, H3, 7 & H2, H4, 2	
240	H1-H4	H1, H3, 6 & H2, H4, 3	
252	H1-H4	H1, H3, 5 & H2, H4, 4	
432	H1-H4	H2, 1 & H3, 8	
444	H1-H4	H2, 2 & H3, 8	
456	H1-H4	H2, 2 & H3, 7	
468	H1-H4	H2, 3 & H3, 7	
480	H1-H4	H2, 3 & H3, 6	
492	H1-H4	H2, 4 & H3, 6	
504	H1-H4	H2, 4 & H3, 5	

Secondary Volts

Secondary Volts	Inter-Connect	Connect Secondary Lines To
240	X2 to X3	X1-X4
120/240	X2 to X3	X1-X2-X4
120	X1 to X3 X2 to X4	X1-X4

6 PRIMARY: 208
SECONDARY: 120/240
TAPS: 2, 5% BNFC

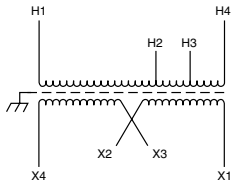
Primary Volts	Connect Primary Lines To	Inter-Connect	Connect Secondary Lines To
208	H1 & H4		
198	H1 & H3		
187	H1 & H2		

Secondary Volts

Secondary Volts	Inter-Connect	Connect Secondary Lines To
240	X2 to X3	X1-X4
120/240	X2 to X3	X1-X2-X4
120	X1 to X3 X2 to X4	X1-X4

7

PRIMARY: 277
SECONDARY: 120/240
TAPS: 2, 5% BNFC



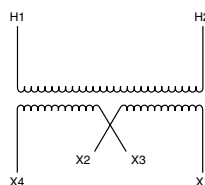
Primary Volts	Connect Primary Lines To	Inter-Connect	Connect Secondary Lines To
277	H1 & H4		
263	H1 & H3		
250	H1 & H2		

Secondary Volts

Primary Volts	Inter-Connect	Connect Secondary Lines To
240	X2 to X3	X1-X4
120/240	X2 to X3	X1-X2-X4
120	X1 to X3 X2 to X4	X1-X4

8

PRIMARY: 600
SECONDARY: 120/240
TAPS: None



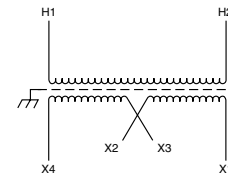
Primary Volts	Connect Primary Lines To	Inter-Connect	Connect Secondary Lines To
600	H1-H2		

Secondary Volts

Primary Volts	Inter-Connect	Connect Secondary Lines To
240	X2 to X3	X1-X4
120/240	X2 to X3	X1-X2-X4
120	X1 to X3 X2 to X4	X1-X4

9

PRIMARY: 600
SECONDARY: 120/240
TAPS: None



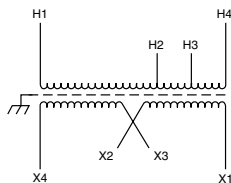
Primary Volts	Connect Primary Lines To	Inter-Connect	Connect Secondary Lines To
600	H1-H2		

Secondary Volts

Primary Volts	Inter-Connect	Connect Secondary Lines To
240	X2 to X3	X1-X4
120/240	X2 to X3	X1-X2-X4
120	X1 to X3 X2 to X4	X1-X4

10

PRIMARY: 600
SECONDARY: 120/240
TAPS: 2, 5% BNFC



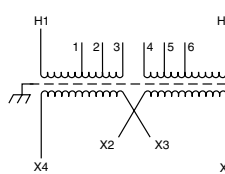
Primary Volts	Connect Primary Lines To	Inter-Connect	Connect Secondary Lines To
600	H1-H4		
570	H1-H3		
540	H1-H2		

Secondary Volts

Primary Volts	Inter-Connect	Connect Secondary Lines To
240	X2 to X3	X1-X4
120/240	X2 to X3	X1-X2-X4
120	X1 to X3 X2 to X4	X1-X4

11

PRIMARY: 600
SECONDARY: 120/240
TAPS: 2, 2 1/2% ANFC, 4, 2 1/2% BNFC



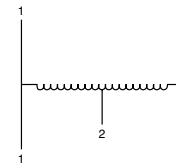
Primary Volts	Connect Primary Lines To	Inter-Connect	Connect Secondary Lines To
540	H1-H2	1-6	
555	H1-H2	1-5	
570	H1-H2	2-6	
585	H1-H2	2-5	
600	H1-H2	3-5	
615	H1-H2	2-4	
635	H1-H2	3-4	

Secondary Volts

Primary Volts	Inter-Connect	Connect Secondary Lines To
240	X2 to X3	X1-X4
120/240	X2 to X3	X1-X2-X4
120	X1 to X3 X2 to X4	X1-X4

12

PRIMARY: 240
SECONDARY: 120/240
TAPS: None



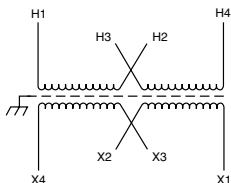
Primary Volts	Connect Primary Lines To	Inter-Connect	Connect Secondary Lines To
240	1-3		

Secondary Volts

Primary Volts	Inter-Connect	Connect Secondary Lines To
240		1-3
120		1-2 or 2-3
120/240		1-2-3

13

PRIMARY: 120 x 240
SECONDARY: 120/240
TAPS: None



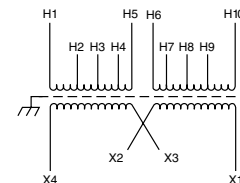
Primary Volts	Connect Primary Lines To	Inter-Connect	Connect Secondary Lines To
240	H1-H4	H2 to H3	
120	H1-H3 & H2-H4		

Secondary Volts

Primary Volts	Inter-Connect	Connect Secondary Lines To
240	X2 to X3	X1-X4
120/240	X2 to X3	X1-X2-X4
120	X1 to X3 X2 to X4	X1-X4

14

EXPORT MODEL
PRIMARY: 190-220 x 380-440
SECONDARY: 120/240

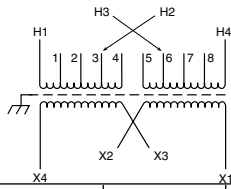


Primary Volts	Connect Primary Lines To	Inter-Connect	Connect Secondary Lines To
190	H1 & H7	H1 to H6 H2 to H7	
200	H1 & H8	H1 to H6 H3 to H8	
208	H1 & H9	H1 to H6 H4 to H9	
220	H1 & H10	H1 to H6 H5 to H10	
380	H1 & H7	H2 & H6	
400	H1 & H8	H3 & H6	
416	H1 & H9	H4 & H6	
440	H1 & H10	H5 & H6	

Secondary Volts

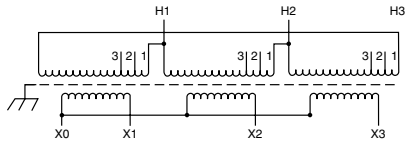
Primary Volts	Inter-Connect	Connect Secondary Lines To
240	X2 to X3	X1-X4
120/240	X2 to X3	X1-X2-X4
120	X1 to X3 X2 to X4	X1-X4

15 EXPORT MODEL
PRIMARY: 190-220 x 380-440
SECONDARY:120/240



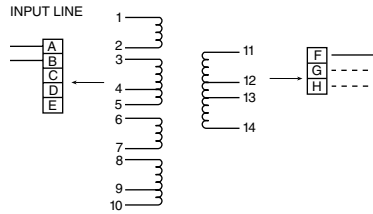
Primary Volts	Connect Primary Lines To	Inter-Connect	Connect Secondary Lines To
190	H1 & H4	H1, H3, 8 & H2, H4, 1	
200	H1 & H4	H1, H3, 7 & H2, H4, 2	
208	H1 & H4	H1, H3, 6 & H2, H4, 3	
220	H1 & H4	H1, H3, 5 & H2, H4, 4	
380	H1 & H4	H2, H3, 1, 8	
400	H1 & H4	H2, H3, 2, 7	
416	H1 & H4	H2, H3, 3, 6	
440	H1 & H4	H2, H3, 4, 5	
Secondary Volts			
240		X2 to X3	X1-X4
120/240		X2 to X3	X1-X2-X4
120		X1 to X3 X2 to X4	X1-X4

18 PRIMARY: 240 Volts Delta
SECONDARY: 208Y/120 Volts
TAPS: 2, 5% BNFC



Primary Volts	Connect Primary Lines To	Inter-Connect	Connect Secondary Lines To
240	H1, H2, H3	1	
228	H1, H2, H3	2	
216	H1, H2, H3	3	
Secondary Volts			
208			X1, X2, X3
120 1 phase			X1 to X0 X2 to X0 X3 to X0

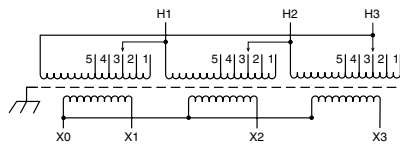
16 POWER LINE CONDITIONER



Input Connections Insulate		& Isolate
Volts	Connect	
120	1, 3, 6, 8 to A 2, 5, 7, 10 to B	4, 9
208	1, 6 to A 4, 9 to B 2, 3 to C 7, 8 to D	5, 10
240	1, 6 to A 5, 10 to B 2, 3 to C 7, 8 to D	4, 9
480	1 to A 10 to B 2, 3 to C 5, 6 to D 7, 8 to E	4, 9
Output Connections		Output Lines To
Volts	Connect	
120	11 to F 12 to G 14 to H	F, G
120/240	11 to F 12 to G 14 to H	F, G, H
208	11 to F 12 to G 13 to H	F, H
240	11 to F 12 to G 14 to H	F, H

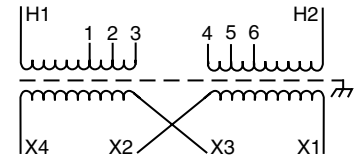
NOTE: To prevent externally shorting, all leads marked "INSULATE" must be individually capped with wire nuts or equivalent. Insulate leads individually!

19 PRIMARY: 240 Volts Delta
SECONDARY: 208Y/120 Volts
TAPS: 2, 2 1/2% ANFC, 2, 2 1/2% BNFC



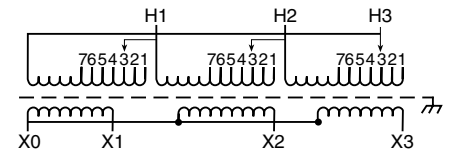
Primary Volts	Connect Primary Lines To	Inter-Connect	Connect Secondary Lines To
252	H1, H2, H3	1	
246	H1, H2, H3	2	
240	H1, H2, H3	3	
234	H1, H2, H3	4	
228	H1, H2, H3	5	
Secondary Volts			
208			X1, X2, X3
120 1 phase			X1 to X0 X2 to X0 X3 to X0

17 PRIMARY: 208 Volts
SECONDARY: 120/240 Volts
TAPS:



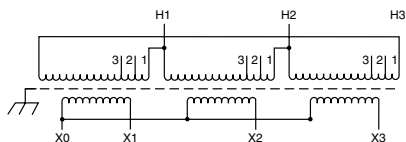
Primary Volts	Connect Primary Lines To	Inter-Connect	Connect Secondary Lines To
218	H1 & H2	3 to 4	
213	H1 & H2	2 to 4	
208	H1 & H2	3 to 5	
203	H1 & H2	2 to 5	
198	H1 & H2	1 to 5	
192	H1 & H2	2 to 6	
187	H1 & H2	1 to 6	
Secondary Volts			
240		X2 to X3	X1-X4
120/240		X2 to X3	X1-X2-X4
120		X1 to X3 X2 to X4	X1-X4

20 PRIMARY: 380 Volts Delta
SECONDARY: 220Y/127 Volts
TAPS: 2, 2 1/2% ANFC, 4, 2 1/2% BNFC



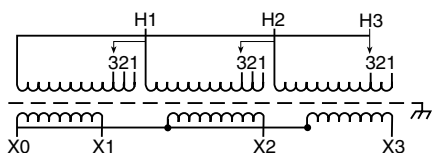
Primary Volts	Connect Primary Lines To	Inter-Connect	Connect Secondary Lines To
399	H1, H2, H3	1	
390	H1, H2, H3	2	
380	H1, H2, H3	3	
371	H1, H2, H3	4	
361	H1, H2, H3	5	
352	H1, H2, H3	6	
342	H1, H2, H3	7	
Secondary Volts			
220			X1, X2, X3
127 1 phase			X1 to X0 X2 to X0 X3 to X0

21 PRIMARY: 480 Volts Delta
SECONDARY: 208Y/120 Volts
TAPS: 2, 5% BNFC



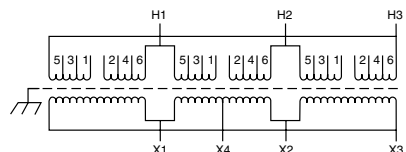
Primary Volts	Connect Primary Lines To	Inter-Connect	Connect Secondary Lines To
480	H1, H2, H3	1	
456	H1, H2, H3	2	
432	H1, H2, H3	3	
Secondary Volts			
208			X1, X2, X3
120 1 phase			X1 to X0 X2 to X0 X3 to X0

24 PRIMARY: 380 Volts Delta
SECONDARY: 220Y/127 Volts
TAPS: 2, 5% BNFC



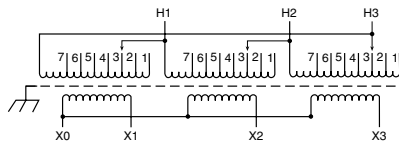
Primary Volts	Connect Primary Lines To	Inter-Connect	Connect Secondary Lines To
380	H1, H2, H3	1	
361	H1, H2, H3	2	
342	H1, H2, H3	3	
Secondary Volts			
220			X1, X2, X3
127 1 phase			X1 to X0 X2 to X0 X3 to X0

27 PRIMARY: 480 Volts Delta
SECONDARY: 240 Volts Delta/120 Volts
TAPS: 2, 2 1/2% ANFC, 4, 2 1/2% BNFC



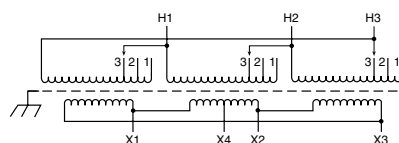
Primary Volts	Connect Primary Lines To	Inter-Connect	Connect Secondary Lines To
504	H1, H2, H3	1 to 2	
492	H1, H2, H3	2 to 3	
480	H1, H2, H3	1 to 4	
468	H1, H2, H3	3 to 4	
456	H1, H2, H3	1 to 6	
444	H1, H2, H3	3 to 6	
432	H1, H2, H3	5 to 6	
Secondary Volts			
240			X1, X2, X3
120			X1, X4 or X2, X4

22 PRIMARY: 480 Volts Delta
SECONDARY: 208Y/120 Volts
TAPS: 2, 2 1/2% ANFC, 4, 2 1/2% BNFC



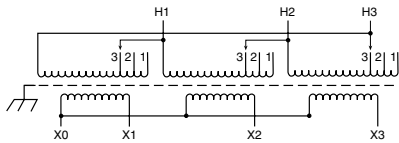
Primary Volts	Connect Primary Lines To	Inter-Connect	Connect Secondary Lines To
504	H1, H2, H3	1	
492	H1, H2, H3	2	
480	H1, H2, H3	3	
468	H1, H2, H3	4	
456	H1, H2, H3	5	
444	H1, H2, H3	6	
432	H1, H2, H3	7	
Secondary Volts			
208			X1, X2, X3
120 1 phase			X1 to X0 X2 to X0 X3 to X0

25 PRIMARY: 480 Volts Delta
SECONDARY: 240 Volts Delta/120 Volts
TAPS: 2, 5% BNFC



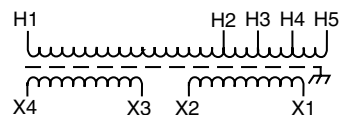
Primary Volts	Connect Primary Lines To	Inter-Connect	Connect Secondary Lines To
480	H1, H2, H3	1	
456	H1, H2, H3	2	
432	H1, H2, H3	3	
Secondary Volts			
240			X1, X2, X3
120			X1, X4 or X2, X4

28 PRIMARY: 600 Volts Delta
SECONDARY: 208Y/120 Volts
TAPS: 2, 5% BNFC



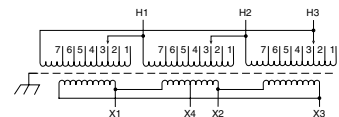
Primary Volts	Connect Primary Lines To	Inter-Connect	Connect Secondary Lines To
600	H1, H2, H3	1	
570	H1, H2, H3	2	
540	H1, H2, H3	3	
Secondary Volts			
208			X1, X2, X3
120 1 phase			X1 to X0 X2 to X0 X3 to X0

23 PRIMARY: 120/208/240/277 Volts
SECONDARY: 120/240 Volts



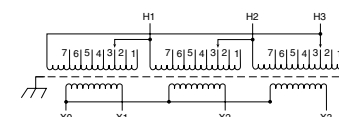
Primary Volts	Connect Primary Lines To	Inter-Connect	Connect Secondary Lines To
277	H1, H5		
240	H1, H4		
208	H1, H3		
120	H1, H2		
Secondary Volts			
120		X1 to X3 X2 to X4	X1-X4
120/240		X2 to X3	X1-X2-X4
240		X2 to X3	X1-X4

26 PRIMARY: 480 Volts Delta
SECONDARY: 240 Volts Delta/120 Volts
TAPS: 2, 2 1/2% ANFC, 4, 2 1/2% BNFC



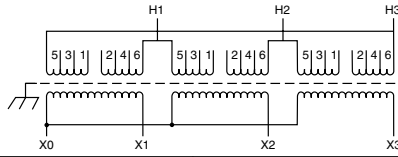
Primary Volts	Connect Primary Lines To	Inter-Connect	Connect Secondary Lines To
504	H1, H2, H3	1	
492	H1, H2, H3	2	
480	H1, H2, H3	3	
468	H1, H2, H3	4	
456	H1, H2, H3	5	
444	H1, H2, H3	6	
432	H1, H2, H3	7	
Secondary Volts			
240			X1, X2, X3
120			X1, X4 or X2, X4

29 PRIMARY: 600 Volts Delta
SECONDARY: 208Y/120 Volts
TAPS: 2, 2 1/2% ANFC, 4, 2 1/2% BNFC



Primary Volts	Connect Primary Lines To	Inter-Connect	Connect Secondary Lines To
630	H1, H2, H3	1	
615	H1, H2, H3	2	
600	H1, H2, H3	3	
585	H1, H2, H3	4	
570	H1, H2, H3	5	
555	H1, H2, H3	6	
540	H1, H2, H3	7	
Secondary Volts			
208			X1, X2, X3
120 1 phase			X1 to X0 X2 to X0 X3 to X0

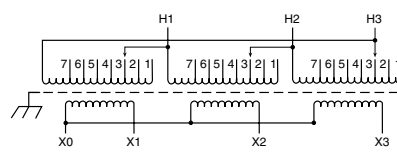
30 PRIMARY: 600 Volts Delta
SECONDARY: 208Y/120 Volts
TAPS: 2, 2 1/2% ANFC, 4, 2 1/2% BNFC



Primary Volts	Connect Primary Lines To	Inter-Connect	Connect Secondary Lines To
630	H1, H2, H3	1 to 2	
615	H1, H2, H3	2 to 3	
600	H1, H2, H3	1 to 4	
585	H1, H2, H3	3 to 4	
570	H1, H2, H3	1 to 6	
555	H1, H2, H3	3 to 6	
540	H1, H2, H3	5 to 6	

Secondary Volts			
208			X1, X2, X3
120			X1 to X0 X2 to X0 X3 to X0
1 phase			

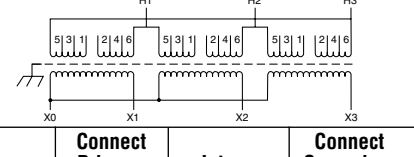
31 PRIMARY: 480 Volts Delta
SECONDARY: 480Y/277 Volts
TAPS: 2, 2 1/2% ANFC, 4, 2 1/2% BNFC



Primary Volts	Connect Primary Lines To	Inter-Connect	Connect Secondary Lines To
504	H1, H2, H3	1	
492	H1, H2, H3	2	
480	H1, H2, H3	3	
468	H1, H2, H3	4	
456	H1, H2, H3	5	
444	H1, H2, H3	6	
432	H1, H2, H3	7	

Secondary Volts			
480			X1, X2, X3
277			X1 to X0 X2 to X0 X3 to X0
1 phase			

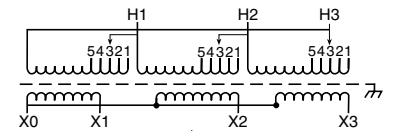
32 PRIMARY: 480 Volts Delta
SECONDARY: 480Y/277 Volts
TAPS: 2, 2 1/2% ANFC, 4, 2 1/2% BNFC



Primary Volts	Connect Primary Lines To	Inter-Connect	Connect Secondary Lines To
504	H1, H2, H3	1 to 2	
492	H1, H2, H3	2 to 3	
480	H1, H2, H3	1 to 4	
468	H1, H2, H3	3 to 4	
456	H1, H2, H3	1 to 6	
444	H1, H2, H3	3 to 6	
432	H1, H2, H3	5 to 6	

Secondary Volts			
480			X1, X2, X3
277			X1 to X0 X2 to X0 X3 to X0
1 phase			

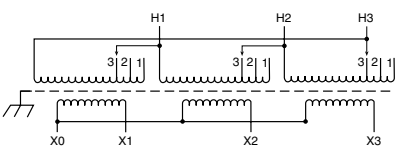
33 PRIMARY: 380 Volts Delta
SECONDARY: 208/120 Volts
TAPS: 2-2 1/2% ANFC and BNFC



Primary Volts	Connect Primary Lines To	Inter-Connect	Connect Secondary Lines To
399	H1, H2, H3	1	
390	H1, H2, H3	2	
380	H1, H2, H3	3	
371	H1, H2, H3	4	
361	H1, H2, H3	5	

Secondary Volts			
208			X1, X2, X3
120			X1 to X0 X2 to X0 X3 to X0
1 phase			

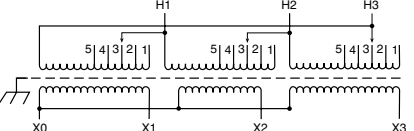
34 PRIMARY: 460 Volts Delta
SECONDARY: 460Y/266 Volts
TAPS: 1-5% ANFC and BNFC



Primary Volts	%	Connect Leads to Tap No.
483	105	1
460	100	2
437	95	3

Secondary Volts			
460			X1, X2, X3
266			X1 & X0 X2 & X0 X3 & X0
1 phase			

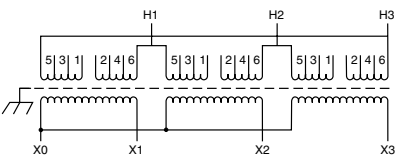
35 PRIMARY: 460 Volts Delta
SECONDARY: 460Y/266 Volts
TAPS: 2-2 1/2% ANFC and BNFC



Primary Volts	%	Connect Leads to Tap No.
483	105	1
472	102.5	2
460	100	3
449	97.5	4
437	95	5

Secondary Volts			
460			X1, X2, X3
266			X1 & X0 X2 & X0 X3 & X0
1 phase			

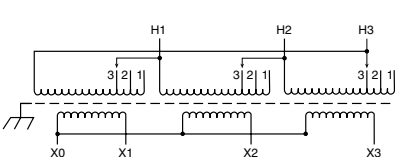
36 PRIMARY: 460 Volts Delta
SECONDARY: 460Y/266 Volts
TAPS: 2-2 1/2% ANFC and BNFC



Primary Volts	%	Connect Leads to Tap No.
483	105	1 to 2
472	102.5	2 to 3
460	100	1 to 4
449	97.5	3 to 4
437	95	4 to 5

Secondary Volts			
460			X1, X2, X3
266			X1 & X0 X2 & X0 X3 & X0
1 phase			

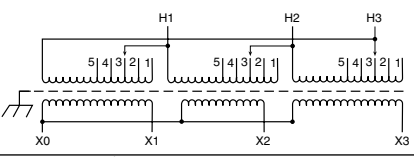
37 PRIMARY: 460 Volts Delta
SECONDARY: 230Y/133 Volts
TAPS: 1-5% ANFC and BNFC



Primary Volts	%	Connect Leads to Tap No.
483	105	1
460	100	2
437	95	3

Secondary Volts			
230			X1, X2, X3
133			X1 & X0 X2 & X0 X3 & X0
1 phase			

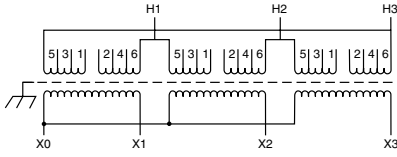
38 PRIMARY: 460 Volts Delta
SECONDARY: 230Y/133 Volts
TAPS: 2-2 1/2% ANFC and BNFC



Primary Volts	%	Connect Leads to Tap No.
483	105	1
472	102.5	2
460	100	3
449	97.5	4
437	95	5

Secondary Volts			
230			X1, X2, X3
133			X1 & X0 X2 & X0 X3 & X0
1 phase			

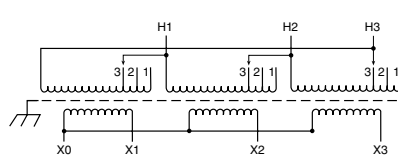
39 PRIMARY: 460 Volts Delta
SECONDARY: 230Y/133 Volts
TAPS: 2-2 1/2% ANFC and BNFC



Primary Volts	%	Connect Leads to Tap No.
483	105	1 to 2
472	102.5	2 to 3
460	100	1 to 4
449	97.5	3 to 4
437	95	4 to 5

Secondary Volts		
230		X1, X2, X3
133 1 phase		X1 & X0 X2 & X0 X3 & X0

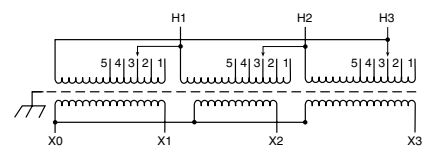
40 PRIMARY: 575 Volts Delta
SECONDARY: 230Y/133 Volts
TAPS: 1-5% ANFC and BNFC



Primary Volts	%	Connect Leads to Tap No.
604	105	1
575	100	2
546	95	3

Secondary Volts		
230		X1, X2, X3
133 1 phase		X1 & X0 X2 & X0 X3 & X0

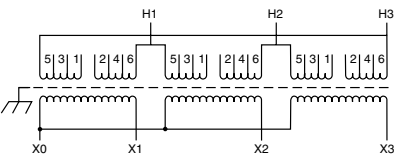
41 PRIMARY: 575 Volts Delta
SECONDARY: 230Y/133 Volts
TAPS: 2-2 1/2% ANFC and BNFC



Primary Volts	%	Connect Leads to Tap No.
604	105	1
589	102.5	2
575	100	3
561	97.5	4
546	95	5

Secondary Volts		
230		X1, X2, X3
133 1 phase		X1 & X0 X2 & X0 X3 & X0

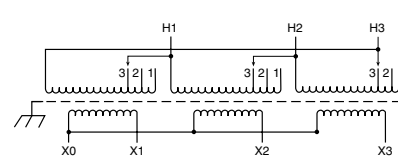
42 PRIMARY: 575 Volts Delta
SECONDARY: 230Y/133 Volts
TAPS: 2-2 1/2% ANFC and BNFC



Primary Volts	%	Connect Leads to Tap No.
604	105	1 to 2
589	102.5	2 to 3
575	100	1 to 4
561	97.5	3 to 4
546	95	4 to 5

Secondary Volts		
230		X1, X2, X3
133 1 phase		X1 & X0 X2 & X0 X3 & X0

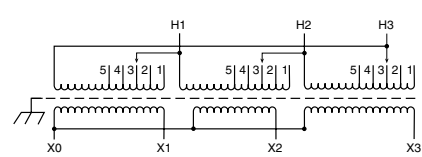
43 PRIMARY: 575 Volts Delta
SECONDARY: 460Y/266 Volts
TAPS: 1-5% ANFC and BNFC



Primary Volts	%	Connect Leads to Tap No.
604	105	1
575	100	2
546	95	3

Secondary Volts		
460		X1, X2, X3
266 1 phase		X1 & X0 X2 & X0 X3 & X0

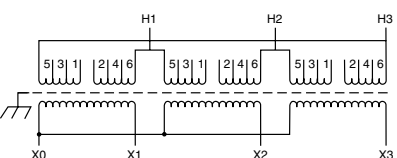
44 PRIMARY: 575 Volts Delta
SECONDARY: 460Y/266 Volts
TAPS: 2-2 1/2% ANFC and BNFC



Primary Volts	%	Connect Leads to Tap No.
604	105	1
589	102.5	2
575	100	3
561	97.5	4
546	95	5

Secondary Volts		
460		X1, X2, X3
266 1 phase		X1 & X0 X2 & X0 X3 & X0

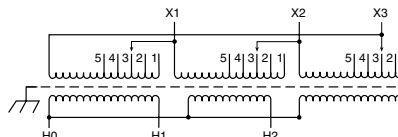
45 PRIMARY: 575 Volts Delta
SECONDARY: 460Y/266 Volts
TAPS: 2-2 1/2% ANFC and BNFC



Primary Volts	%	Connect Leads to Tap No.
604	105	1 to 2
589	102.5	2 to 3
575	100	1 to 4
561	97.5	3 to 4
546	95	4 to 5

Secondary Volts		
460		X1, X2, X3
266 1 phase		X1 & X0 X2 & X0 X3 & X0

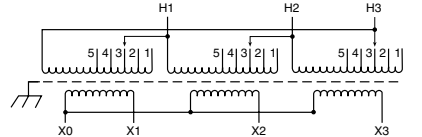
46 PRIMARY: 208 Volts Delta
SECONDARY: 480Y/277 Volts
TAPS: 2, 2 1/2% ANFC, 2, 2 1/2% BNFC



Primary Volts	Connect Primary Lines To	Inter-Connect	Connect Secondary Lines To
218	X1, X2, X3	1	
213	X1, X2, X3	2	
208	X1, X2, X3	3	
203	X1, X2, X3	4	
198	X1, X2, X3	5	

Secondary Volts		
480		H1, H2, H3
277 1 phase		H1 to H0 H2 to H0 H3 to H0

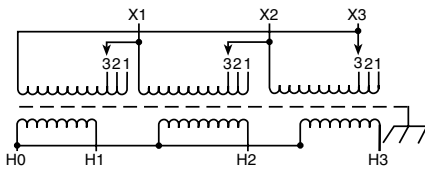
47 PRIMARY: 416 Volts Delta
SECONDARY: 208Y/120 Volts
TAPS: 2, 2 1/2% ANFC, 2, 2 1/2% BNFC



Primary Volts	Connect Primary Lines To	Inter-Connect	Connect Secondary Lines To
437	H1, H2, H3	1	
426	H1, H2, H3	2	
416	H1, H2, H3	3	
406	H1, H2, H3	4	
395	H1, H2, H3	5	

Secondary Volts		
208		X1, X2, X3
120 1 phase		X1 to X0 X2 to X0 X3 to X0

48 PRIMARY: 208 Volts Delta
SECONDARY: 480Y/277 Volts
TAPS: 2, 5% BNFC

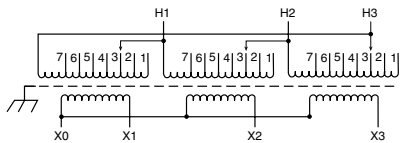


Primary Volts	Connect Primary Lines To	Inter-Connect	Connect Secondary Lines To
208	X1, X2, X3	1	
198	X1, X2, X3	2	
187	X1, X2, X3	3	

Secondary Volts

480			H1, H2, H3
277 1 phase			H1 to H0 H2 to H0 H3 to H0

51 PRIMARY: 600 Volts Delta
SECONDARY: 480Y/277 Volts
TAPS: 2, 2 1/2% ANFC, 4, 2 1/2% BNFC

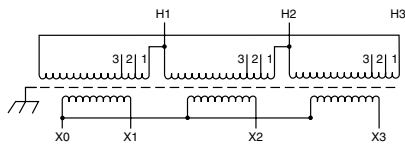


Primary Volts	Connect Primary Lines To	Inter-Connect	Connect Secondary Lines To
630	H1, H2, H3	1	
615	H1, H2, H3	2	
600	H1, H2, H3	3	
585	H1, H2, H3	4	
570	H1, H2, H3	5	
555	H1, H2, H3	6	
540	H1, H2, H3	7	

Secondary Volts

480			X1, X2, X3
277 1 phase			X1 to X0 X2 to X0 X3 to X0

54 PRIMARY: 600 Volts Delta
SECONDARY: 600Y/347 Volts
TAPS: 2, 5% BNFC

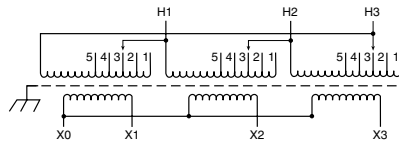


Primary Volts	Connect Primary Lines To	Inter-Connect	Connect Secondary Lines To
600	H1, H2, H3	1	
570	H1, H2, H3	2	
540	H1, H2, H3	3	

Secondary Volts

600			X1, X2, X3
347 1 phase			X1 to X0 X2 to X0 X3 to X0

49 PRIMARY: 600 Volts Delta
SECONDARY: 208Y/120 Volts
TAPS: 2, 2 1/2% ANFC, 2, 2 1/2% BNFC

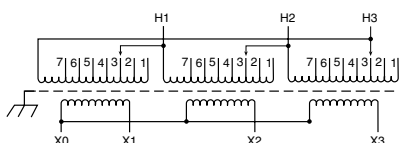


Primary Volts	Connect Primary Lines To	Inter-Connect	Connect Secondary Lines To
630	H1, H2, H3	1	
615	H1, H2, H3	2	
600	H1, H2, H3	3	
585	H1, H2, H3	4	
570	H1, H2, H3	5	

Secondary Volts

208			X1, X2, X3
120 1 phase			X1 to X0 X2 to X0 X3 to X0

52 PRIMARY: 600 Volts Delta
SECONDARY: 600Y/347 Volts
TAPS: 2, 2 1/2% ANFC, 4, 2 1/2% BNFC

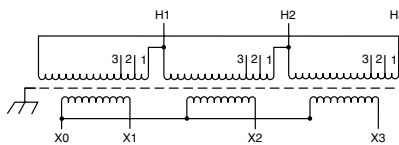


Primary Volts	Connect Primary Lines To	Inter-Connect	Connect Secondary Lines To
630	H1, H2, H3	1	
615	H1, H2, H3	2	
600	H1, H2, H3	3	
585	H1, H2, H3	4	
570	H1, H2, H3	5	
555	H1, H2, H3	6	
540	H1, H2, H3	7	

Secondary Volts

600			X1, X2, X3
347 1 phase			X1 to X0 X2 to X0 X3 to X0

55 PRIMARY: 600 Volts Delta
SECONDARY: 480Y/277 Volts
TAPS: 2, 5% BNFC

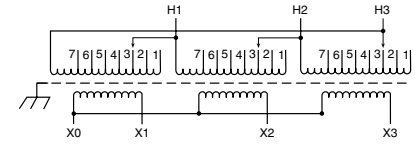


Primary Volts	Connect Primary Lines To	Inter-Connect	Connect Secondary Lines To
600	H1, H2, H3	1	
570	H1, H2, H3	2	
540	H1, H2, H3	3	

Secondary Volts

480			X1, X2, X3
277 1 phase			X1 to X0 X2 to X0 X3 to X0

50 PRIMARY: 600 Volts Delta
SECONDARY: 380Y/220 Volts
TAPS: 2, 2 1/2% ANFC, 4, 2 1/2% BNFC

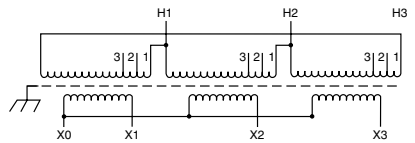


Primary Volts	Connect Primary Lines To	Inter-Connect	Connect Secondary Lines To
630	H1, H2, H3	1	
615	H1, H2, H3	2	
600	H1, H2, H3	3	
585	H1, H2, H3	4	
570	H1, H2, H3	5	
555	H1, H2, H3	6	
540	H1, H2, H3	7	

Secondary Volts

380			X1, X2, X3
220 1 phase			X1 to X0 X2 to X0 X3 to X0

53 PRIMARY: 600 Volts Delta
SECONDARY: 380Y/220 Volts
TAPS: 2, 5% BNFC

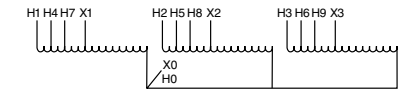


Primary Volts	Connect Primary Lines To	Inter-Connect	Connect Secondary Lines To
600	H1, H2, H3	1	
570	H1, H2, H3	2	
540	H1, H2, H3	3	

Secondary Volts

380			X1, X2, X3
220 1 phase			X1 to X0 X2 to X0 X3 to X0

56 PRIMARY: 600 Volts
SECONDARY: 480 Volts
TAPS: 2, 5% BNFC

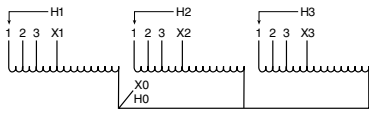


Primary Volts	Alt Rating	Connect Primary Lines To	Inter-Connect	Connect Secondary Lines To
600	480	H1, H2, H3		
570	456	H4, H5, H6		
540	432	H7, H8, H9		

Secondary Volts

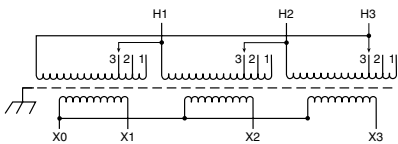
480	380			X1, X2, X3
277 1 phase	220 1 phase			X1 to X0 X2 to X0 X3 to X0

57 PRIMARY: 600 Volts
SECONDARY: 480 Volts
TAPS: 2, 5% BNFC



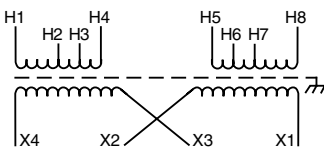
Primary Volts	Alt Rating	Connect Primary Lines To	Inter-Connect	Connect Secondary Lines To
600	480	H1, H2, H3	1	
570	456	H1, H2, H3	2	
540	432	H1, H2, H3	3	
Secondary Volts				
480	380			X1, X2, X3
277 1 phase	220 1 phase			X1 to X0 X2 to X0 X3 to X0

60 PRIMARY: 208 Volts Delta
SECONDARY: 208Y/120 Volts
TAPS: 2-5% BNFC



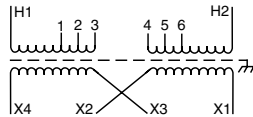
Primary Volts	%	Connect Leads to Tap No.
208	100	1
198	95	2
187	90	3
Secondary Volts		
208		X1, X2, X3
120 1 phase		X1 & X0 X2 & X0 X3 & X0

63 PRIMARY: 120/208/240/277 Volts
SECONDARY: 120/240 Volts



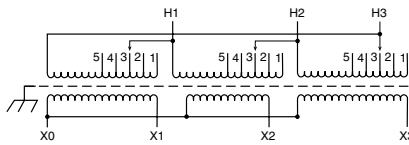
Primary Volts	Connect Primary Lines To	Inter-Connect	Connect Secondary Lines To
120	H1 & H8	H1 to H6 H3 to H8	
208	H1 & H8	H2 to H7	
240	H1 & H8	H3 to H6	
277	H1 & H8	H4 to H5	
Secondary Volts			
240		X2 to X3	X1 & X4
120/240		X2 to X3	X1, X3, X4
120		X1 to X3 X2 to X4	X1 & X4

58 PRIMARY: 208 Volts
SECONDARY: 120/240 Volts
TAPS: 2, 5% BNFC



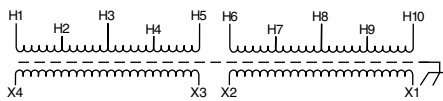
Primary Volts	Connect Primary Lines To	Inter-Connect	Connect Secondary Lines To
208	H1 & H2	3 to 4	
198	H1 & H2	2 to 5	
187	H1 & H2	1 to 6	
Secondary Volts			
240		X2 to X3	X1-X4
120/240		X2 to X3	X1-X2-X4
120		X1 to X3 X2 to X4	X1-X4

61 PRIMARY: 208 Volts Delta
SECONDARY: 208Y/120 Volts
TAPS: 2-2 1/2% ANFC and 2-2 1/2% BNFC



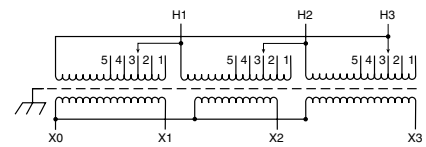
Primary Volts	%	Connect Leads to Tap No.
218	105	1
213	102.5	2
208	100	3
203	97.5	4
198	95	5
Secondary Volts		
208		X1, X2, X3
120 1 phase		X1 & X0 X2 & X0 X3 & X0

64 PRIMARY: 190/208/220/240 x
380/416/440/480 Volts
SECONDARY: 120/240 Volts



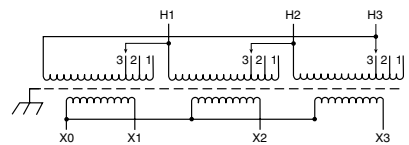
Primary Volts	Connect Primary Lines To	Inter-Connect	Connect Secondary Lines To
190	H1 & H7	H1 to H6 H2 to H7	
208	H1 & H8	H1 to H6 H3 to H8	
220	H1 & H9	H1 to H6 H4 to H9	
240	H1 & H10	H1 to H6 H5 to H10	
380	H1 & H7	H2 to H6	
416	H1 & H8	H3 to H6	
440	H1 & H9	H4 to H6	
480	H1 & H10	H5 to H6	
Secondary Volts			
240		X2 to X3	X1 - X4
120/240		X2 to X3	X1- X2 - X4
120		X1 to X3 X2 to X4	X1 - X4

59 PRIMARY: 230 Volts Delta
SECONDARY: 230Y/133 Volts
TAPS: 2-2 1/2% ANFC and 2-2 1/2% BNFC



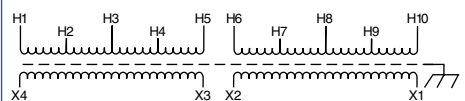
Primary Volts	%	Connect Leads to Tap No.
242	105	1
236	102.5	2
230	100	3
224	97.5	4
219	95	5
Secondary Volts		
230		X1, X2, X3
133 1 phase		X1 & X0 X2 & X0 X3 & X0

62 PRIMARY: 230 Volts Delta
SECONDARY: 230Y/133 Volts
TAPS: 1-5% ANFC and 1-5% BNFC



Primary Volts	%	Connect Leads to Tap No.
241	105	1
230	100	2
218	95	3
Secondary Volts		
230		X1, X2, X3
133 1 phase		X1 & X0 X2 & X0 X3 & X0

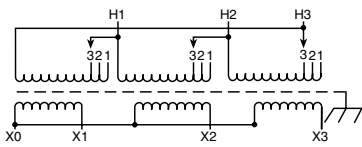
65 PRIMARY: 190/200/208/220 x
380/400/416/440 Volts
SECONDARY: 110/220 Volts



Primary Volts	Connect Primary Lines To	Inter-Connect	Connect Secondary Lines To
190	H1 & H7	H1 to H6 H2 to H7	
200	H1 & H8	H1 to H6 H3 to H8	
208	H1 & H9	H1 to H6 H4 to H9	
220	H1 & H10	H1 to H6 H5 to H10	
380	H1 & H7	H2 to H6	
400	H1 & H8	H3 to H6	
415	H1 & H9	H4 to H6	
440	H1 & H10	H5 to H6	
Secondary Volts			
220		X2 to X3	X1-X4
110/220		X2 to X3	X1-X2-X4
110		X1 to X3 X2 to X4	X1-X4

66

PRIMARY: 416 Volts Delta
SECONDARY: 208Y/120 Volts
TAPS: 2, 5% BNFC



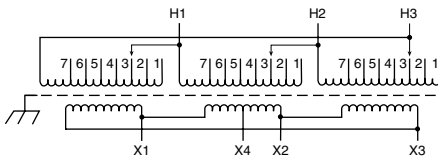
Primary Volts	Connect Primary Lines To	Inter-Connect	Connect Secondary Lines To
437	H1, H2, H3	1	
416	H1, H2, H3	2	
395	H1, H2, H3	3	

Secondary Volts

208			X1, X2, X3
120			X1 to X0 X2 to X0 X3 to X0
1 phase			

69

PRIMARY: 600 Volts Delta
SECONDARY: 240 Delta/120 Volts
TAPS: 2, 2 1/2% ANFC, 4, 2 1/2% BNFC



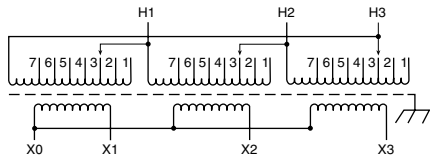
Primary Volts	%	Connect Leads to Tap No.
630	105	1
615	102.5	2
600	100	3
585	97.5	4
570	95	5
555	92.5	6
540	90	7

Secondary Volts

240			X1, X2, X3
120			X1, X4, or X2, X4

72

PRIMARY: 380 Volts Delta
SECONDARY: 208Y/120 Volts
TAPS: 2, 2 1/2% ANFC, 4, 2 1/2% BNFC



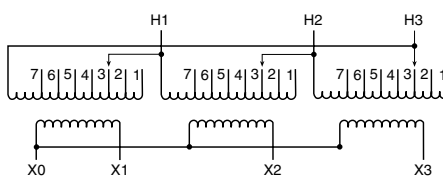
Primary Volts	%	Connect Leads to Tap No.
399	105	1
390	102.5	2
380	100	3
371	97.5	4
361	95	5
352	92.5	6
342	90	7

Secondary Volts

208			X1, X2, X3
120			X1 to X0 X2 to X0 X3 to X0
1 phase			

67

PRIMARY: 480 Volts Delta
SECONDARY: 208Y/120 Volts
TAPS: 2-2 1/2% ANFC, 4, 2 1/2% BNFC



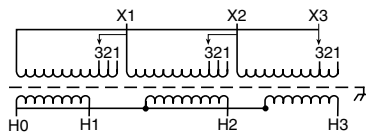
Primary Volts	Connect Primary Lines To	Inter-Connect	Connect Secondary Lines To
504	H1, H2, H3	1	
492	H1, H2, H3	2	
480	H1, H2, H3	3	
468	H1, H2, H3	4	
456	H1, H2, H3	5	
444	H1, H2, H3	6	
432	H1, H2, H3	7	

Secondary Volts

208			X1, X2, X3
120			X1 to X0 X2 to X0 X3 to X0
1 phase			

70

PRIMARY: 240 Volts Delta
SECONDARY: 480Y/277 Volts
TAPS: 2, 5% BNFC



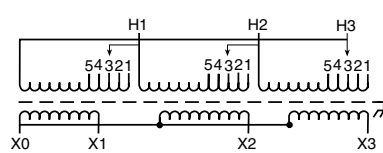
Primary Volts	%	Connect Leads to Tap No.
240	100	1
228	95	2
216	90	3

Secondary Volts

480			H1, H2, H3
277			H1 to H0 H2 to H0 H3 to H0
1 phase			

73

PRIMARY: 440 Volts Delta
SECONDARY: 220Y/127 Volts
TAPS: 2, 5% ANFC & BNFC



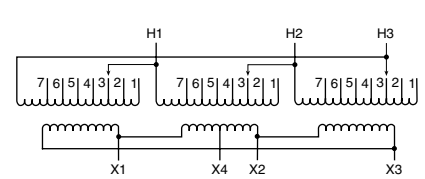
Primary Volts	%	Connect Leads to Tap No.
484	110	1
462	105	2
440	100	3
418	95	4
396	90	5

Secondary Volts

220			X1, X2, X3
127			X1 to X0 X2 to X0 X3 to X0
1 phase			

68

PRIMARY: 480 Volts Delta
SECONDARY: 240 Volts Delta/120 Volts
TAPS: 2, 2 1/2% ANFC, 4, 2 1/2% BNFC



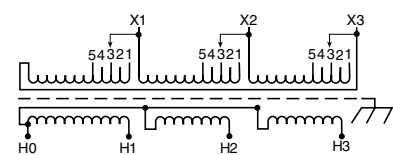
Primary Volts	Connect Primary Lines To	Inter-Connect	Connect Secondary Lines To
504	H1, H2, H3	1	
492	H1, H2, H3	2	
480	H1, H2, H3	3	
468	H1, H2, H3	4	
456	H1, H2, H3	5	
444	H1, H2, H3	6	
432	H1, H2, H3	7	

Secondary Volts

240			X1, X2, X3
120			X1, X4, or X2, X4

71

PRIMARY: 240 Volts Delta
SECONDARY: 480Y/277 Volts
TAPS: 2, 2 1/2% ANFC & BNFC

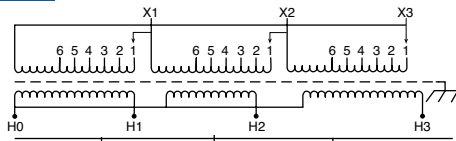


Primary Volts	Connect Primary Lines To	Inter-Connect	Connect Secondary Lines To
252	X1, X2, X3	1	
246	X1, X2, X3	2	
240	X1, X2, X3	3	
234	X1, X2, X3	4	
228	X1, X2, X3	5	

Secondary Volts

480			H1, H2, H3
277			H1 to H0 H2 to H0 H3 to H0
1 phase			

74 PRIMARY: 190/200/210/220/
230/240 Volts Delta
SECONDARY: 400Y/231 Volts

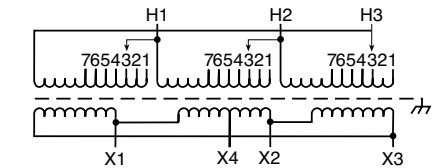


Primary Volts	Connect Primary Lines To	Inter-Connect	Connect Secondary Lines To
240	X1, X2, X3	1	
230	X1, X2, X3	2	
220	X1, X2, X3	3	
210	X1, X2, X3	4	
200	X1, X2, X3	5	
190	X1, X2, X3	6	

Secondary Volts

400			H1, H2, H3
231 1 phase			H1 to H0 H2 to H0 H3 to H0

77 PRIMARY: 400 Volts Delta
SECONDARY: 240 Delta/120 Volts
TAPS: 2, 2 1/2% ANFC, 4, 2 1/2% BNFC

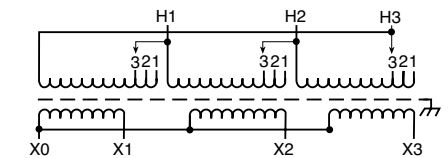


Primary Volts	Connect Primary Lines To	Inter-Connect	Connect Secondary Lines To
420	H1, H2, H3	1	
410	H1, H2, H3	2	
400	H1, H2, H3	3	
390	H1, H2, H3	4	
380	H1, H2, H3	5	
370	H1, H2, H3	6	
360	H1, H2, H3	7	

Secondary Volts

240			X1, X2, X3
120			X1 to X4 or X2 to X4

80 PRIMARY: 480 Volts Delta
SECONDARY: 208Y/120 Volts
TAPS: 1-5% ANFC & 1-5% BNFC

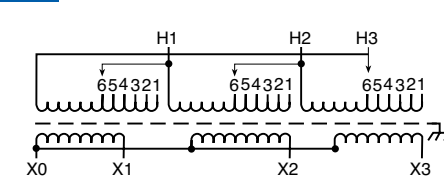


Primary Volts	Connect Primary Lines To	Inter-Connect	Connect Secondary Lines To
504	H1, H2, H3	1	
480	H1, H2, H3	2	
456	H1, H2, H3	3	

Secondary Volts

208			X1, X2, X3
120 1 phase			X1 to X0 X2 to X0 X3 to X0

75 PRIMARY: 190/200/210/220/
230/240 Volts Delta
SECONDARY: 400Y/231 Volts

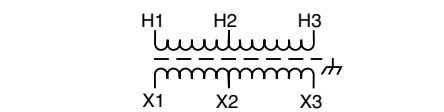


Primary Volts	Connect Primary Lines To	Inter-Connect	Connect Secondary Lines To
240	H1, H2, H3	1	
230	H1, H2, H3	2	
220	H1, H2, H3	3	
210	H1, H2, H3	4	
200	H1, H2, H3	5	
190	H1, H2, H3	6	

Secondary Volts

400			X1, X2, X3
231 1 phase			X1 to X0 X2 to X0 X3 to X0

78 PRIMARY: 277/480 Volts
SECONDARY: 208/277 Volts
TAPS: NONE

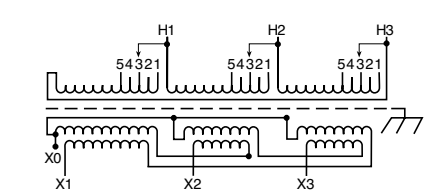


Primary Volts	Connect Primary Lines To	Inter-Connect	Connect Secondary Lines To
277	H1 & H2		
480	H1 & H3		

Secondary Volts

208			X1 to X2
277			X1 to X3

81 PRIMARY: 480 Volts Delta
SECONDARY: 208Y/120 Volts
TAPS: 2, 2 1/2% ANFC, 2, 2 1/2% BNFC

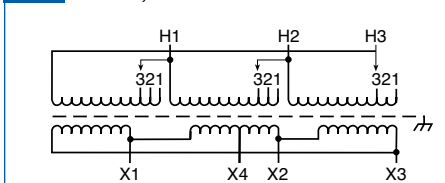


Primary Volts	Connect Primary Lines To	Inter-Connect	Connect Secondary Lines To
504	H1, H2, H3	1	
492	H1, H2, H3	2	
480	H1, H2, H3	3	
468	H1, H2, H3	4	
456	H1, H2, H3	5	

Secondary Volts

208			X1, X2, X3
120 1 phase			X1 to X0 X2 to X0 X3 to X0

76 PRIMARY: 400 Volts Delta
SECONDARY: 240 Volts Delta/120 Volts
TAPS: 2, 5% BNFC

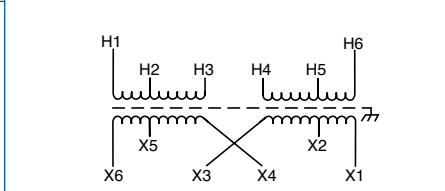


Primary Volts	Connect Primary Lines To	Inter-Connect	Connect Secondary Lines To
400	H1, H2, H3	1	
380	H1, H2, H3	2	
360	H1, H2, H3	3	

Secondary Volts

240			X1, X2, X3
120			X1 to X4 or X2 to X4

79 PRIMARY: 277/480 Volts
SECONDARY: 208/277 Volts
TAPS: NONE

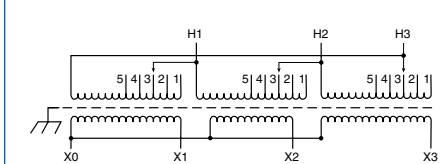


Primary Volts	Connect Primary Lines To	Inter-Connect	Connect Secondary Lines To
277	H1 - H5	H2 to H4	
480	H1 - H6	H3 to H4	

Secondary Volts

208		X2 to X4	X1 - X5
277		X3 to X4	X1 - X6

82 PRIMARY: 380 Volts Delta
SECONDARY: 208Y/120 Volts
TAPS: 2-2 1/2% ANFC and 2-2 1/2% BNFC



Primary Volts	%	Connect Leads to Tap No.
399	105	1
390	102.5	2
380	100	3
371	97.5	4
361	95	5

Secondary Volts

208		X1, X2, X3
120 1 phase		X1 to X0 X2 to X0 X3 to X0