

# PE30000RC Series

## 80 Amp Variable Speed & Two-Speed Control Systems



PE30065RC



PE34065RC

### PE30000RC Series Kits

#### Wireless 5-Circuit Pool/Spa Control System with 80 Amp Breaker Base, Actuator Control & Two Actuators

Some heat pumps can consume between 40 and 60 Amps worth of power; therefore, it may be necessary to have a higher amperage breaker base to accommodate heat pumps. Combine the features of the PE653RC Multi-Wave Control System with the convenience of the PE30000 80 Amp Intermatic Panel and create a powerful PE30065RC wireless control system kit for any pool or spa installation. The PE30000 Series Panel includes an eight position 80 Amp breaker base to accommodate a variety of different equipment loads and two mechanism slots to accommodate the vast array of mechanisms Intermatic has to offer. In addition, there is a low voltage raceway for low voltage control lines (i.e. actuators, sensors, etc...), four décor knockouts for GFCIs and switches, and a convenient side knockout for an outdoor receptacle.

Order a PE34065RC which includes a P4043ME mechanism and two PE24VA actuators and remotely control any pool and spa combination. With this addition, you can now switch both water valves and heater thermostat settings between your pool and spa with a click on your wireless control. These are by far the most affordable and versatile control systems offered today.

#### Included in Kits:

- Multi-Wave Control System (PE653RC)
- Three AA Batteries
- Equipment Labels
- Water Sensor (PA122) with Hose Clamp
- P4043ME Actuator Controller (**PE34065RC only**)
- (2) PE24VA Water Valve Actuators (**PE34065RC only**)
- Owner's Manual
- Small Flat Head Screwdriver
- Hand Held (PE953) Transmitter
- PE30000 Enclosure w/80 Amp Base

#### Specifications:

**Enclosure & Control:** NEMA 3R rated for Indoor/Outdoor installations  
0.048 in. steel with light beige finish

22 in. (55.9 cm) H x 14<sup>3</sup>/<sub>4</sub> in. (37.5 cm) W x 4<sup>1</sup>/<sub>4</sub> in. (10.8 cm) D

**Enclosure Knockouts:** Two 1.09 in. diameter through holes, six combination 1/2 – 3/4 in. knockouts, 2 combination 3/4, 1, 1 1/4 in. knockouts, four 1/2 in. knockouts on the bottom. Two combination 1/2 – 3/4 in. knockouts on the left side and four combination 1/2 – 3/4 in. knockouts, two combination 3/4 – 1 in. on the back. One knockout 1 3/4 x 2 3/4 in. on the right side for mounting switches or GFCI.

**Panel Rating:** 80 Amp 120, 240 VAC or 120, 208 VAC single phase

**Shipping Weight:** 5.4 lbs (2.3 kg)

**Agency Approval:** CSA/C-US

#### Ratings:

**Control Supply:** 120, 240 VAC, 50/60 Hz, 5-Watts Maximum

**Circuit #1:** 20 Amp Resistive (17 FLA, 80 LRA) 120, 240 VAC 50/60 Hz

**Circuits #2 thru #5:** 15 Amp Resistive (10 FLA, 60 LRA) 120, 240 VAC 50/60 Hz

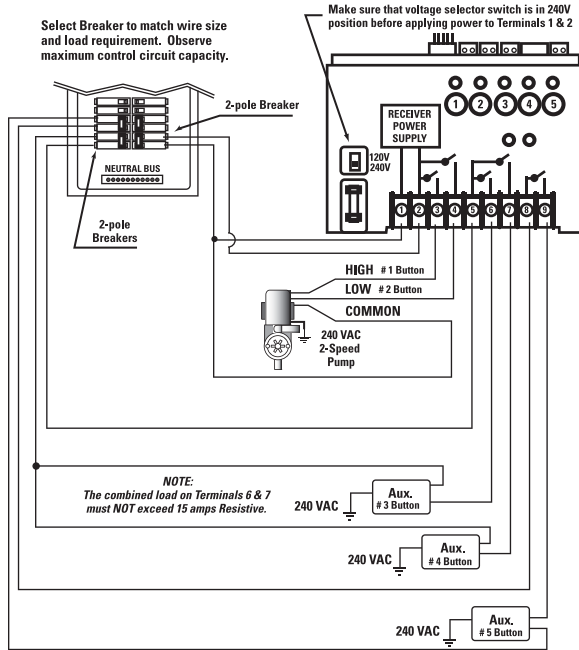
*Note: The following page refers to only a fraction of the most common applications of the Multi-Wave Control System. Contact your Intermatic sales representative or visit [www.intermatic.com](http://www.intermatic.com) and visit the Pool & Spa section of our website for more application ideas and details.*



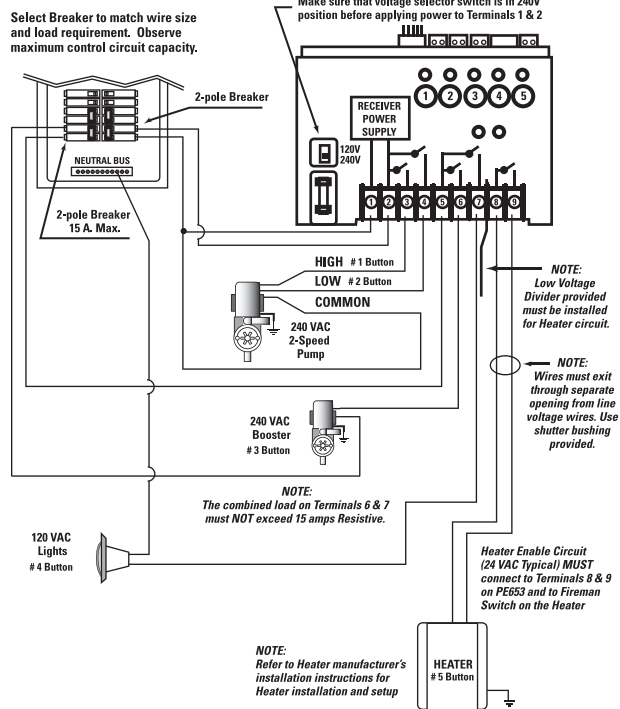
# Common PE30000RC Applications

## PE30065RC Applications

### 240 V 2-Speed Pump + any three 240 VAC Auxiliary Equipment

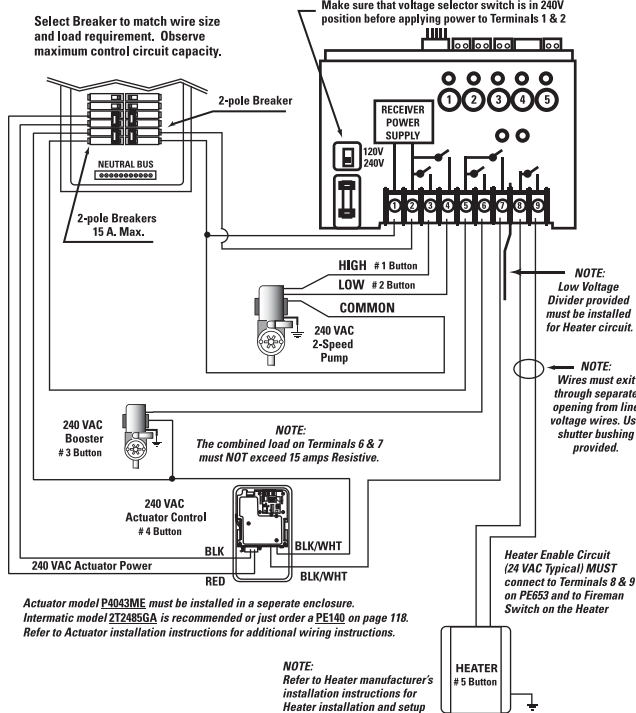


### 240 V 2-Speed Pump + Booster Pump + 120 V Light + Heater



## PE34065RC Applications

### 240 V 2-Speed Pump + 240 V Booster Pump + 240 V Actuator + Heater



### 240 V 2-Speed Pump + 240 V Blower + 240 V Actuator + Heater

