

# Homeowner – Instructions for use

## MP Time Controls

**Manual Switches**  
Separate manually operated switches are provided for both the heating and DHW services. A third switch provides a selection between "constant" and "timed" for both services. The following programmes can be selected:

Programme Required.	Htg switch	DHW switch	constant switch position	timed/constant switch position
Heating & hot water timed	on	on	on	on
Heating & hot water constant	on	on	off	on
Hot water timed	off	on	on	on
Hot water constant	off	on	off	on
Heating timed	on	off	on	on
Heating constant	on	off	off	on
Both services off	off	off	off	off

**Programme Advance**  
Time clock may be advanced to next switching position by rotating programme advance anticlockwise. Red/blue indicator shows **Red** if time switch is **ON**, **blue** if time switch is **off**.  
i.e. If time control is **OFF** (blue indicator shows) rotate knob anticlockwise to **ON** (red indicator shows).

**Tower Flue Components Limited**  
Vale Rise, Tonbridge, TN9 1 TB Kent

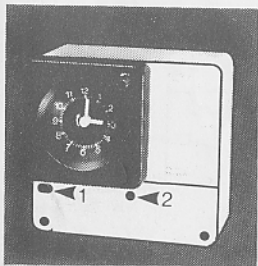


Fig 1

Fixing holes 1 & 2 for surface mounting

## Setting Correct Time and required On-Off periods — refer fig 2.

Remove black clock cover by gently pulling outwards. Using centre clock adjuster, turn clock fingers **clockwise** to correct time of day. The Towerchron clock is mechanically linked to a 24 hour outer dial which must also read the correct time of day. Check that  $\Delta$  pointer is opposite the correct hour of day on the 24 hour dial. (In case of difficulty a "time of day"/24 hour time chart is shown below.)

If not continue rotating centre clock adjuster **clockwise** until correct time of day is reached again. Clock is now set. See example below:

Example - time of day 4 p.m.



WRONG



CORRECT

Programme Advance Knob

### Time of Day/24 hour clock — conversion chart

Time of Day	12	1	2	3	4	5	6	7	8	9	10	11	12	1	2	3	4	5	6	7	8	9	10	11	12
	Midnight	1	2	3	4	5	6	7	8	9	10	11	Noon	1	2	3	4	5	6	7	8	9	10	11	Mid Night

White  $\Delta$  should point to  $\blacktriangle$

## Setting On-Off periods —

- Decide on the time of 'On' periods required.
- Position tappets in outer dial as shown. **Red** tappets switch **On**, **blue** tappets switch **Off**. For example, if you want to switch on between 7 and 10 am and then between 4pm (16.00 on 24 hour dial) and 11pm (23 on dial), tappets are positioned as shown in fig 2.
- In the event of power cuts etc, remember to reset the clock by turning clock fingers **clockwise** only using clock adjuster knob.
- Fig 3. illustrates tappets being inserted into outer dial — short leg of tappett faces middle of clock.

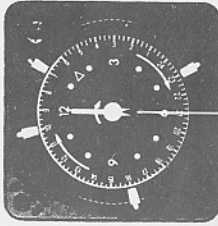


Fig 2

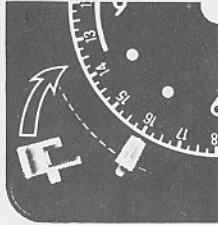
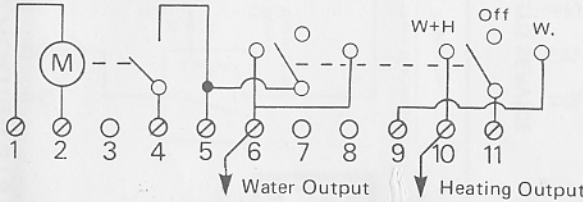


Fig 3

## Installation

- Loosen fixing screw at bottom of unit and remove terminal cover.
- For surface fixing screw unit to wall with countersunk No. 8 woodscrews using fixing holes 1 & 2 (see fig 1).
- When surface mounted, a cable knockout is provided on the bottom edge of the terminal cover.
- Carry out wiring installation using appropriate diagram as shown. For wiring systems not covered by this sheet refer to Tower Flue Components Ltd.
- Replace terminal cover and secure cover fixing screw.

## Internal Wiring Diagram



## Towerchron Model MP Programmer Installation Sheet

The Towerchron MP is suitable for full control of central heating producing heating and hot water services from the same boiler. Up to 4 On positions per day can be selected. The user can choose the following functions.

Timed 'Water only' — Summer use 'Off' — Both services off.

Timed 'Heating and Water' — Winter use.

## Specification

Rating: 250v AC 6 amps resistive load.  
Fitting: Surface mounted

Dimensions: Approximately 4.2" (106mm) high x 4.4" (113mm) wide x 2.6" (65mm) deep.  
Max. ambient temp. 50°C.

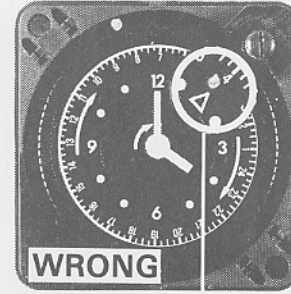
## Setting Correct Time and required On-Off periods — refer fig 2.

Remove black clock cover by gently pulling outwards. Using centre clock adjuster, turn clock fingers **clockwise** to correct time of day.

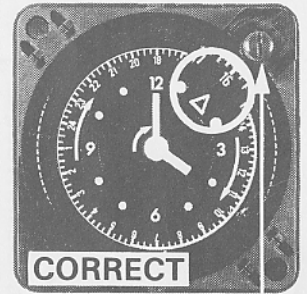
The Towerchron clock is mechanically linked to a 24 hour outer dial which must also read the correct time of day. Check that  $\Delta$  pointer is opposite the correct hour of day on the 24 hour dial.

If not continue rotating centre clock adjuster **clockwise** until correct time of day is reached again. Clock is now set. See example below:

Example - time of day 4 p.m.



WRONG



CORRECT

## Setting On-Off periods —

- Decide on the time of 'On' periods required.
- Position tappets in outer dial as shown. **Red** tappets switch **On**, **blue** tappets switch **Off**. For example, if you want to switch on between 7 and 10 am and then between 4pm (16.00 on 24 hour dial) and 11pm (23 on dial), tappets are positioned as shown in fig 2. In the event of power cuts etc, remember to reset the clock by turning clock fingers **clockwise** only using clock adjuster knob.
- Fig 3. illustrates tappets being inserted into outer dial — short leg of tappett faces middle of clock.

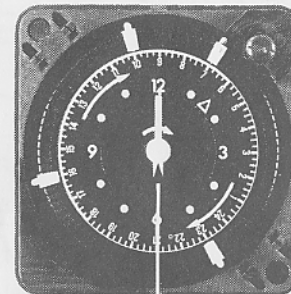


Fig 2

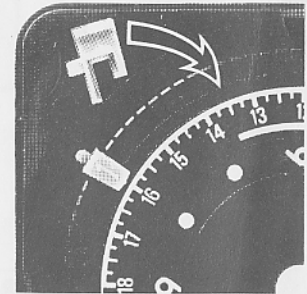


Fig 3